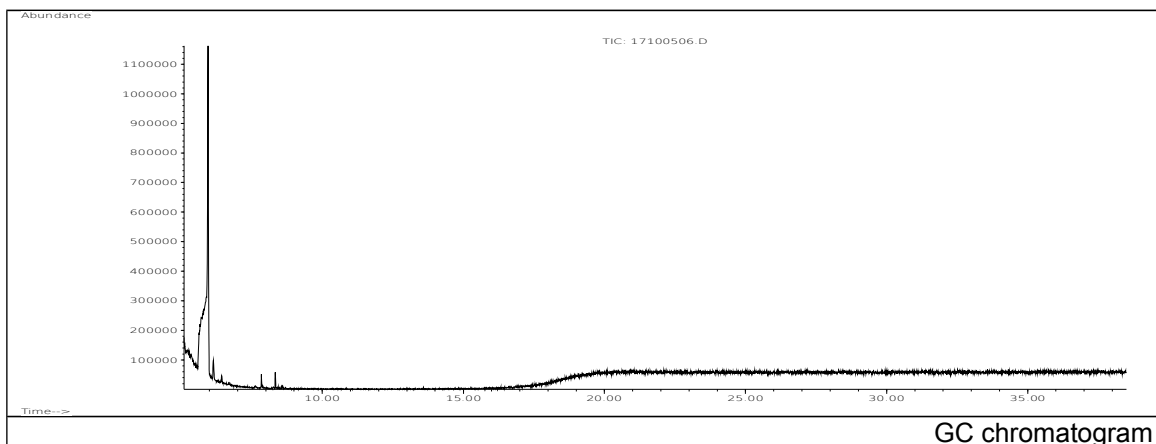


JRC CRL - FCM Database / GC-MS

Sample Name: beta-Pinene
Solvent: Ethanol
Concentration: 100 µg/mL

Date: 17/01/2005
CAS: 000127-91-3
PM ref: 23500 [U.R.N. M079]



m/z	Abundance	Ion Intensity %	m/z	Abundance	Ion Intensity %
39.10	77480,0	39,22	79.10	71032,0	35,95
40.00	55872,0	28,28	80.10	26560,0	13,44
41.10	124592,0	63,06	91.10	78072,0	39,52
53.10	34560,0	17,49	92.10	26936,0	13,63
65.10	24696,0	12,50	93.10	197568,0	100,00
67.10	31800,0	16,10	94.10	26816,0	13,57
69.10	63856,0	32,32	121.10	27248,0	13,79
77.10	66216,0	33,52			

Spectrometer: HEWLETT PACKARD GC/MS 6890/5973
Inlet system: capillary GC/MS
Scan Range: 40-700 amu
Source temperature: 230 °C

Flow: 1.2 mL/min
Column: DB 17-HT (30 m x 0.25 mm x 0.15 µm)
Programme temperature: 40 °C (3 min); 20 °C/min
(350 °C); 350 °C (20 min)