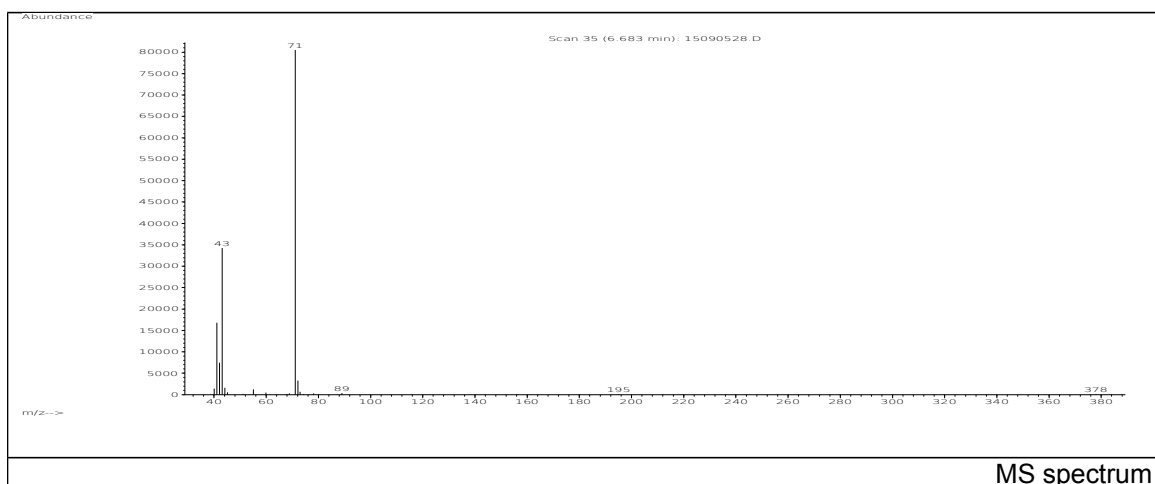
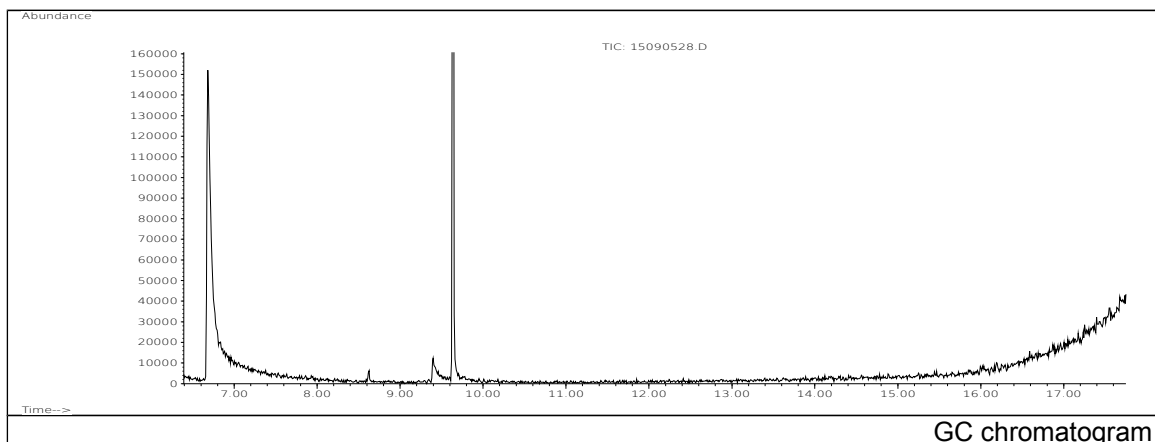


JRC CRL - FCM Database / GC-MS

Sample Name: Butyric anhydride
Solvent: Diethyl Ether
Concentration: 100 µg/mL

Date: 15/09/2005
CAS: 000106-31-0
PM ref: 14170 [U.R.N. M068]



| m/z | Abundance | Ion Intensity % | m/z | Abundance | Ion Intensity % |
|-------|-----------|-----------------|-------|-----------|-----------------|
| 40.10 | 1327,0 | 2,14 | 69.10 | 320,0 | 0,52 |
| 41.10 | 11638,0 | 18,74 | 71.10 | 62096,0 | 100,00 |
| 42.10 | 6484,0 | 10,44 | 72.10 | 2990,0 | 4,82 |
| 43.10 | 25208,0 | 40,60 | 73.10 | 409,0 | 0,66 |
| 44.10 | 1214,0 | 1,96 | 74.00 | 308,0 | 0,50 |
| 45.10 | 601,0 | 0,97 | 78.00 | 236,0 | 0,38 |
| 55.10 | 734,0 | 1,18 | 89.20 | 328,0 | 0,53 |
| 60.10 | 408,0 | 0,66 | | | |

Spectrometer: HEWLETT PACKARD GC/MS 6890/5973
Inlet system: capillary GC/MS
Scan Range: 40-700 amu
Source temperature: 230 °C

Flow: 1.2 mL/min
Column: DB 17-HT (30 m x 0.25 mm x 0.15 µm)
Programme temperature: 40 °C (3 min); 20 °C/min
(350 °C); 350 °C (20 min)