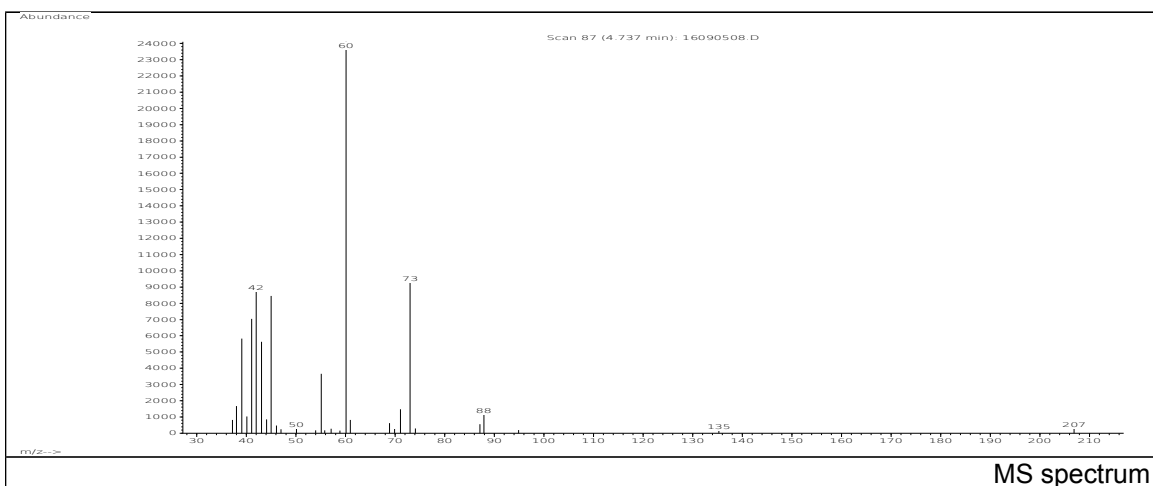
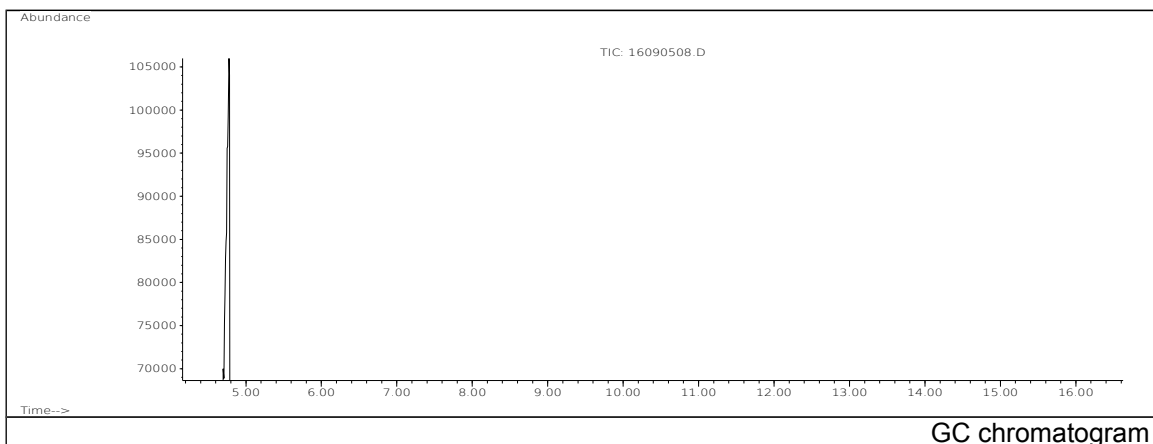


JRC CRL - FCM Database / GC-MS

Sample Name: Butyric acid
Solvent: Ethanol
Concentration: 100 µg/mL

Date: 16/09/2005
CAS: 000107-92-6
PM ref: 14140 [U.R.N. M067]



m/z	Abundance	Ion Intensity %	m/z	Abundance	Ion Intensity %
37.20	813,0	3,37	45.00	8459,0	35,11
38.00	1680,0	6,97	55.10	3666,0	15,21
39.10	5831,0	24,20	60.10	24096,0	100,00
40.10	1028,0	4,27	61.00	817,0	3,39
41.10	7041,0	29,22	71.10	1474,0	6,12
42.00	8723,0	36,20	73.00	9273,0	38,48
43.10	5625,0	23,34	87.90	1150,0	4,77
44.10	854,0	3,54			

Spectrometer: HEWLETT PACKARD GC/MS 6890/5973
Inlet system: capillary GC/MS
Scan Range: 40-700 amu
Source temperature: 230 °C

Flow: 1.2 mL/min
Column: DB 17-HT (30 m x 0.25 mm x 0.15 µm)
Programme temperature: 40 °C (3 min); 20 °C/min
(350 °C); 350 °C (20 min)