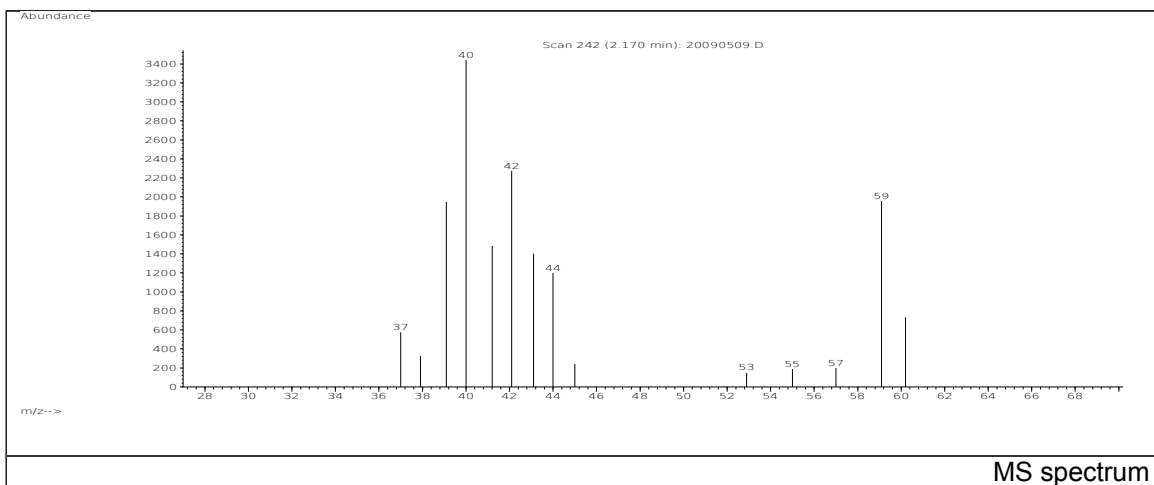


JRC CRL - FCM Database / GC-MS

Sample Name: 1-Propanol
Solvent: -
Concentration: -

Date: 20/09/2005
CAS: 000071-23-8
PM ref: 23800 [U.R.N. A057]



| m/z | Abundance | Ion Intensity % | m/z | Abundance | Ion Intensity % |
|-------|-----------|-----------------|-------|-----------|-----------------|
| 37.10 | 717,0 | 16,49 | 45.00 | 916,0 | 21,07 |
| 38.00 | 656,0 | 15,09 | 55.00 | 205,0 | 4,71 |
| 39.10 | 2612,0 | 60,07 | 57.20 | 300,0 | 6,90 |
| 40.00 | 4348,0 | 100,00 | 59.10 | 3026,0 | 69,60 |
| 41.10 | 2483,0 | 57,11 | 60.00 | 2179,0 | 50,11 |
| 42.10 | 4127,0 | 94,92 | 61.00 | 166,0 | 3,82 |
| 43.10 | 1443,0 | 33,19 | 76.80 | 178,0 | 4,09 |
| 44.10 | 1522,0 | 35,00 | | | |

Spectrometer: HEWLETT PACKARD GC/MS 6890/5973
Inlet system: capillary GC/MS
Scan Range: 40-700 amu
Source temperature: 230 °C

Flow: 1.2 mL/min
Column: DB 17-HT (30 m x 0.25 mm x 0.15 µm)
Programme temperature: 40 °C (3 min); 20 °C/min
(350 °C); 350 °C (20 min)