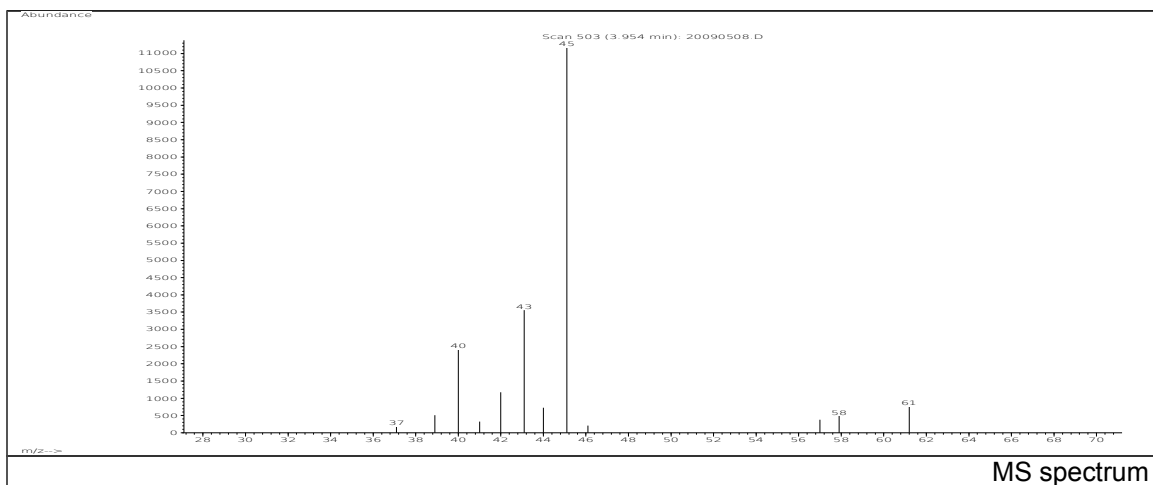


JRC CRL - FCM Database / GC-MS

Sample Name: 1,2-Propanediol
Solvent: -
Concentration: -

Date: 20/09/2005
CAS: 000057-55-6
PM ref: 23740 [U.R.N. A056]



m/z	Abundance	Ion Intensity %	m/z	Abundance	Ion Intensity %
38.10	334,0	2,33	46.10	442,0	3,09
39.00	975,0	6,81	55.10	152,0	1,06
40.00	3350,0	23,40	57.00	382,0	2,67
41.10	470,0	3,28	58.00	275,0	1,92
42.10	1330,0	9,29	60.90	740,0	5,17
43.10	3982,0	27,81	75.10	187,0	1,31
44.10	1271,0	8,88	46.10	442,0	3,09
45.10	14318,0	100,00			

Spectrometer: HEWLETT PACKARD GC/MS 6890/5973
Inlet system: capillary GC/MS
Scan Range: 40-700 amu
Source temperature: 230 °C

Flow: 1.2 mL/min
Column: DB 17-HT (30 m x 0.25 mm x 0.15 µm)
Programme temperature: 40 °C (3 min); 20 °C/min
(350 °C); 350 °C (20 min)