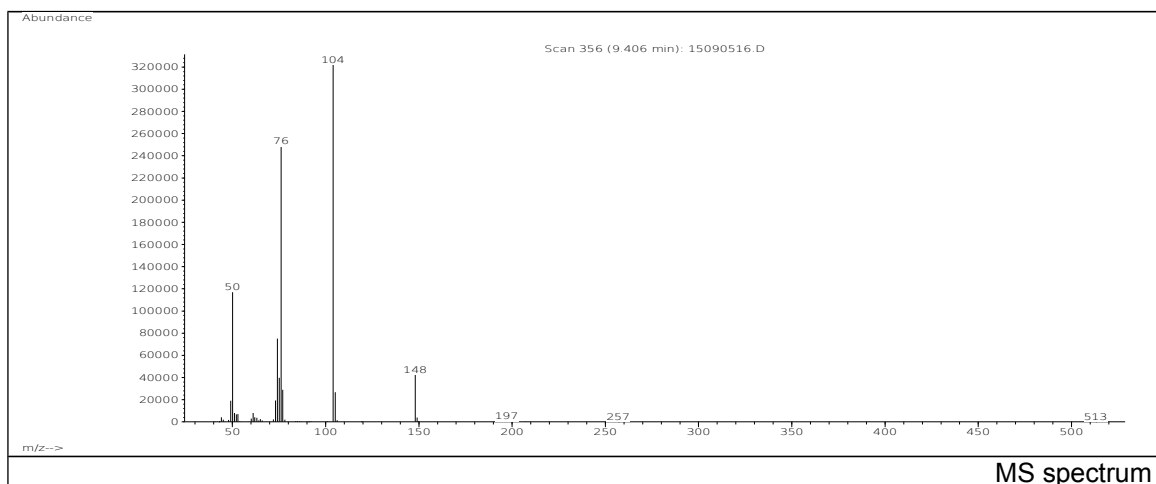
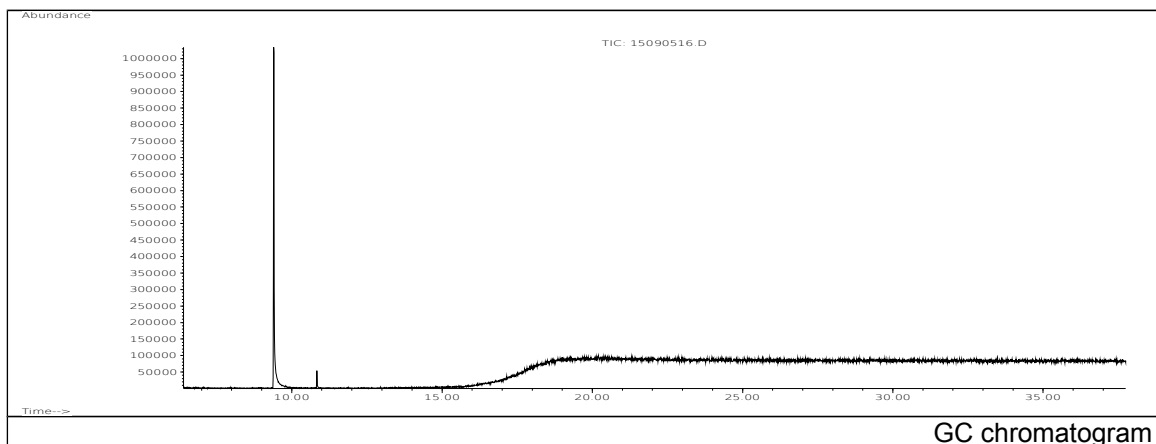


JRC CRL - FCM Database / GC-MS

Sample Name: Phthalic anhydride
Solvent: Ethanol
Concentration: 100 µg/mL

Date: 15/09/2005
CAS: 000085-44-9
PM ref: 23380 [U.R.N. M054]



m/z	Abundance	Ion Intensity %	m/z	Abundance	Ion Intensity %
44.10	4260,0	1,29	74.10	75104,0	22,66
49.10	18952,0	5,72	75.10	39696,0	11,98
50.10	117064,0	35,32	76.10	248192,0	74,88
51.10	7987,0	2,41	77.00	29024,0	8,76
52.10	6728,0	2,03	104.00	331456,0	100,00
53.00	6979,0	2,11	105.10	26792,0	8,08
61.10	7932,0	2,39	148.00	42416,0	12,80
73.10	19312,0	5,83			

Spectrometer: HEWLETT PACKARD GC/MS 6890/5973
Inlet system: capillary GC/MS
Scan Range: 40-700 amu
Source temperature: 230 °C

Flow: 1.2 mL/min
Column: DB 17-HT (30 m x 0.25 mm x 0.15 µm)
Programme temperature: 40 °C (3 min); 20 °C/min
(350 °C); 350 °C (20 min)