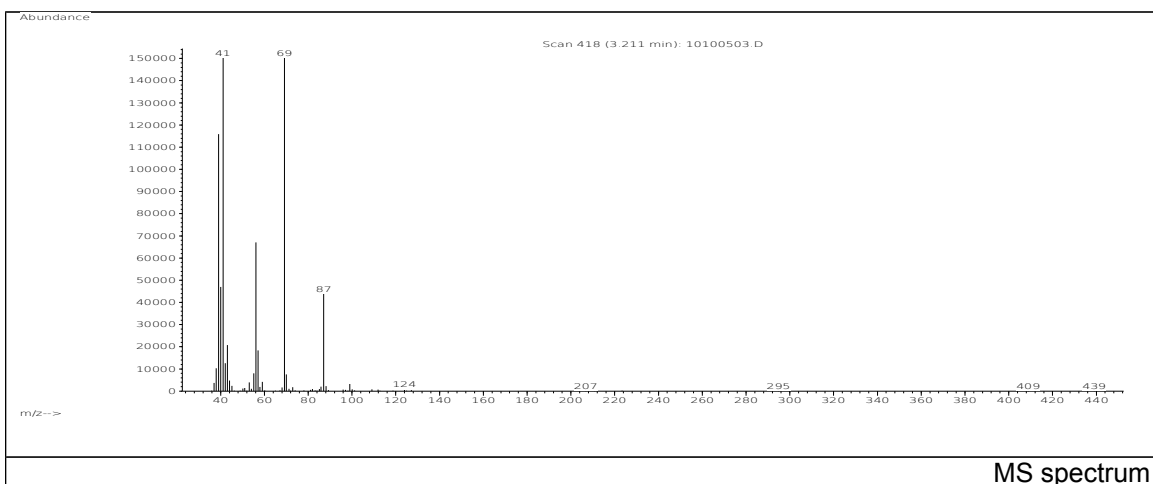
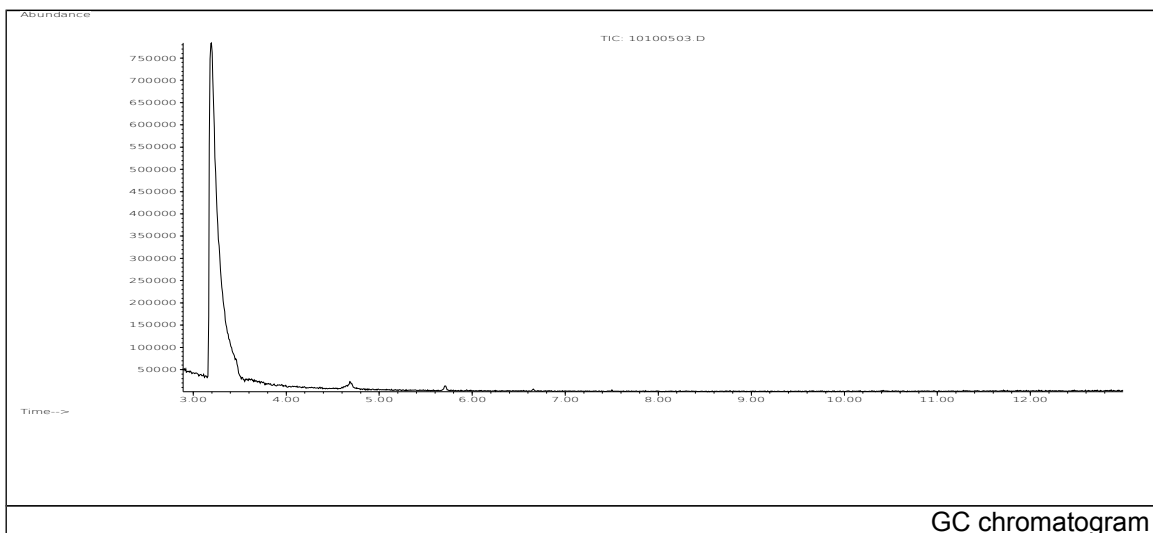


JRC CRL - FCM Database / GC-MS

Sample Name: Methacrylic acid, isobutyl ester
Solvent: Ethanol
Concentration: 100 µg/mL

Date: 10/10/2005
CAS: 000097-86-9
PM ref: 21010 [U.R.N. A049]



m/z	Abundance	Ion Intensity %	m/z	Abundance	Ion Intensity %
38.00	10332,0	6,69	55.10	7974,0	5,16
39.10	115912,0	75,03	56.10	67040,0	43,39
40.10	47024,0	30,44	57.10	18392,0	11,90
41.10	154496,0	100,00	59.10	4160,0	2,69
42.10	12615,0	8,17	69.10	151296,0	97,93
43.10	20744,0	13,43	70.00	7569,0	4,90
44.00	4778,0	3,09	87.10	43824,0	28,37
53.10	3889,0	2,52			

Spectrometer: HEWLETT PACKARD GC/MS 6890/5973
Inlet system: capillary GC/MS
Scan Range: 40-700 amu
Source temperature: 230 °C

Flow: 1.2 mL/min
Column: DB 17-HT (30 m x 0.25 mm x 0.15 µm)
Programme temperature: 40 °C (3 min); 20 °C/min
(350 °C); 350 °C (20 min)