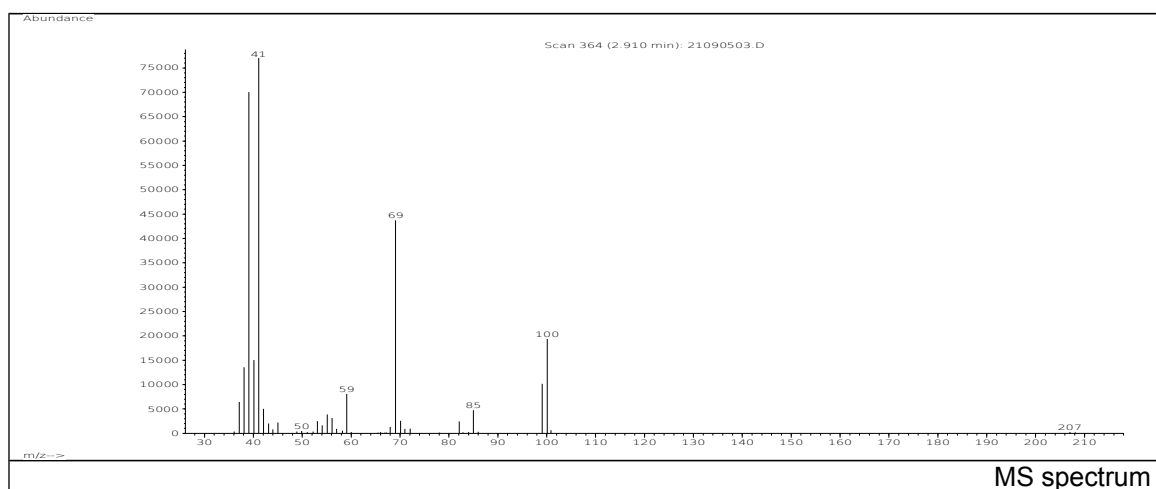
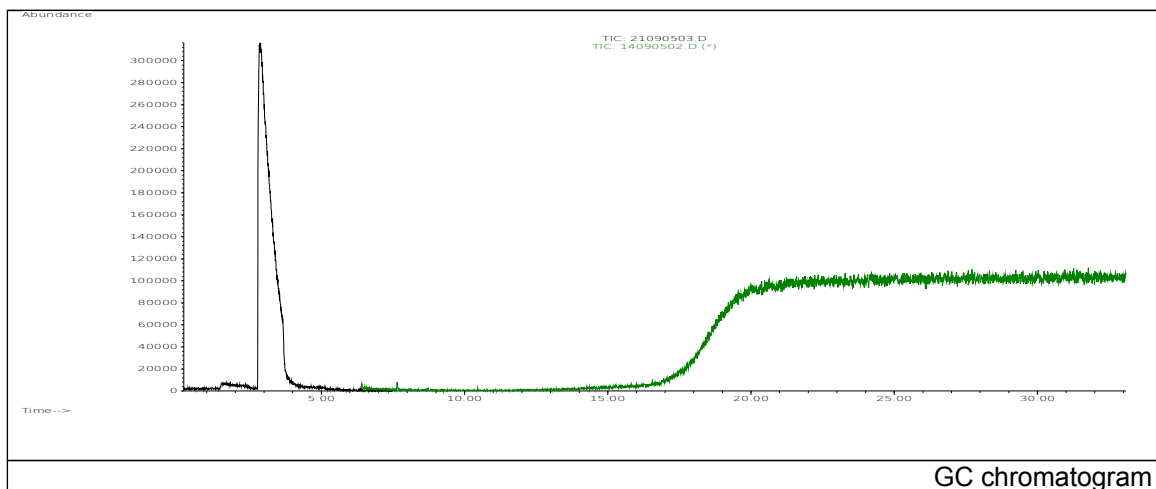


JRC CRL - FCM Database / GC-MS

Sample Name: Methacrylic acid, methyl ester
Solvent: Ethanol
Concentration: 100 µg/mL

Date: 21/09/2005
CAS: 000080-62-6
PM ref: 21130 [U.R.N. M034]



m/z	Abundance	Ion Intensity %	m/z	Abundance	Ion Intensity %
37.10	6195,0	7,81	56.10	3798,0	4,79
38.10	12626,0	15,92	59.00	7254,0	9,15
39.10	74104,0	93,43	69.10	49472,0	62,38
40.10	13969,0	17,61	82.00	3036,0	3,83
41.10	79312,0	100,00	85.00	5103,0	6,43
42.10	4716,0	5,95	99.10	9893,0	12,47
53.00	3096,0	3,90	100.10	19888,0	25,08
55.10	4748,0	5,99			

Spectrometer: HEWLETT PACKARD GC/MS 6890/5973
Inlet system: capillary GC/MS
Scan Range: 40-700 amu
Source temperature: 230 °C

Flow: 1.2 mL/min
Column: DB 17-HT (30 m x 0.25 mm x 0.15 µm)
Programme temperature: 40 °C (3 min); 20 °C/min
(350 °C); 350 °C (20 min)