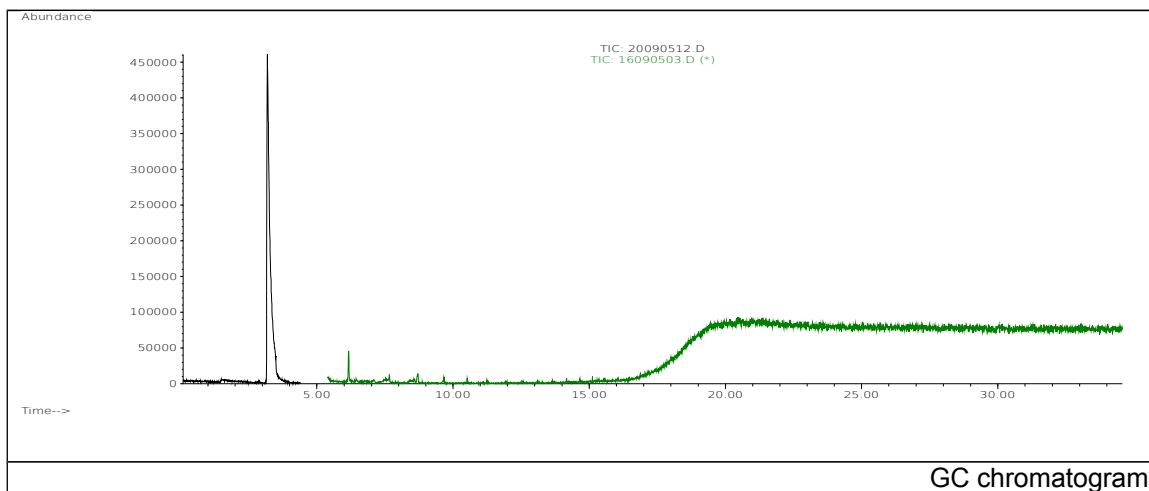


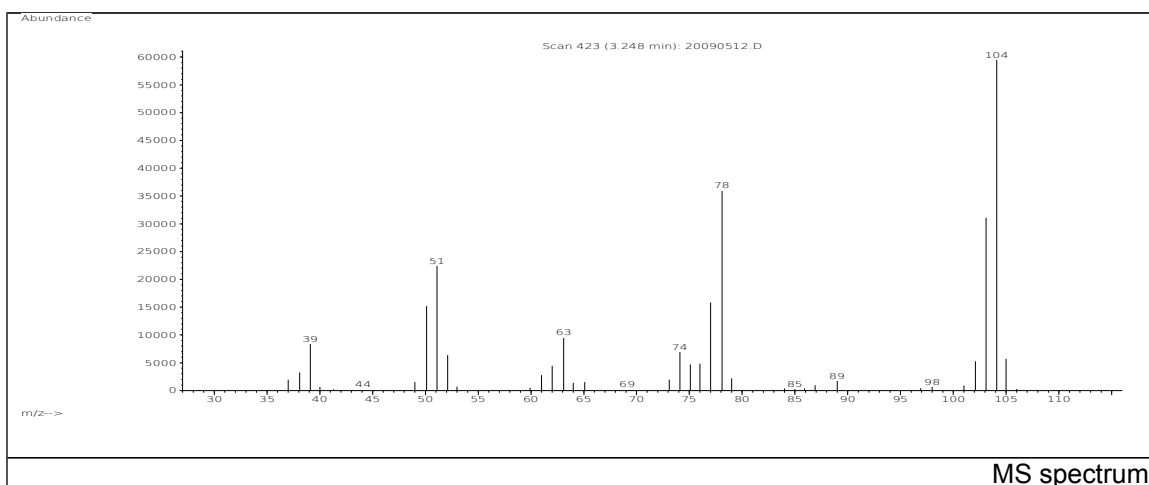
# JRC CRL - FCM Database / GC-MS

Sample Name: Styrene  
Solvent: Ethanol  
Concentration: 100 µg/mL

Date: 20/09/2005  
CAS: 000100-42-5  
PM ref: 24610 [U.R.N. M033]



GC chromatogram



MS spectrum

m/z	Abundance	Ion Intensity %	m/z	Abundance	Ion Intensity %
38.10	6469,0	6,49	76.10	6968,0	6,99
39.10	13684,0	13,73	77.10	26048,0	26,14
50.10	22280,0	22,36	78.10	56320,0	56,52
51.10	35776,0	35,90	102.10	7845,0	7,87
52.10	9762,0	9,80	103.00	46856,0	47,02
63.10	13252,0	13,30	104.10	99648,0	100,00
74.00	10776,0	10,81	105.10	9080,0	9,11
75.00	7590,0	7,62			

Spectrometer: HEWLETT PACKARD GC/MS 6890/5973  
Inlet system: capillary GC/MS  
Scan Range: 40-700 amu  
Source temperature: 230 °C

Flow: 1.2 mL/min  
Column: DB 17-HT (30 m x 0.25 mm x 0.15 µm)  
Programme temperature: 40 °C (3 min); 20 °C/min  
(350 °C); 350 °C (20 min)