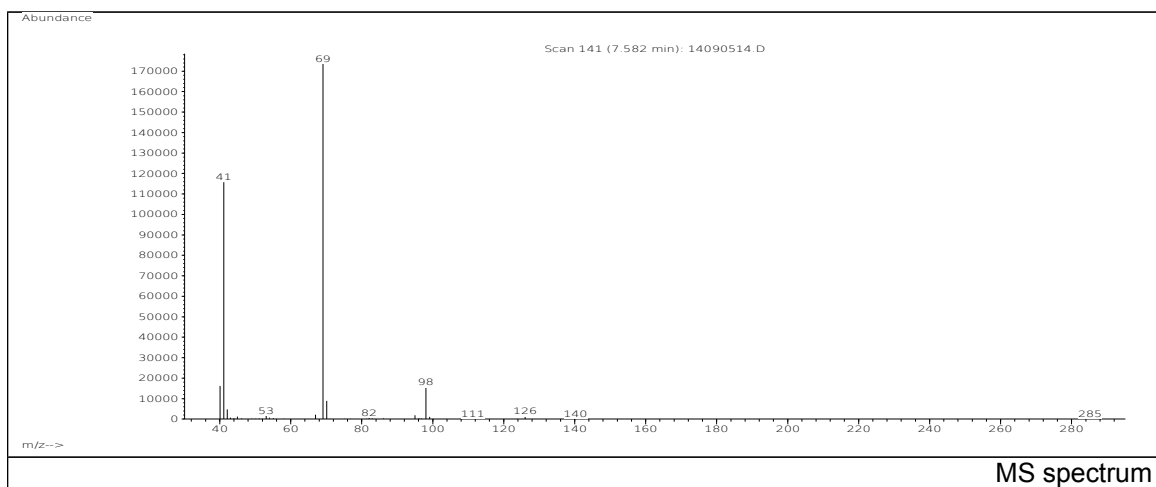
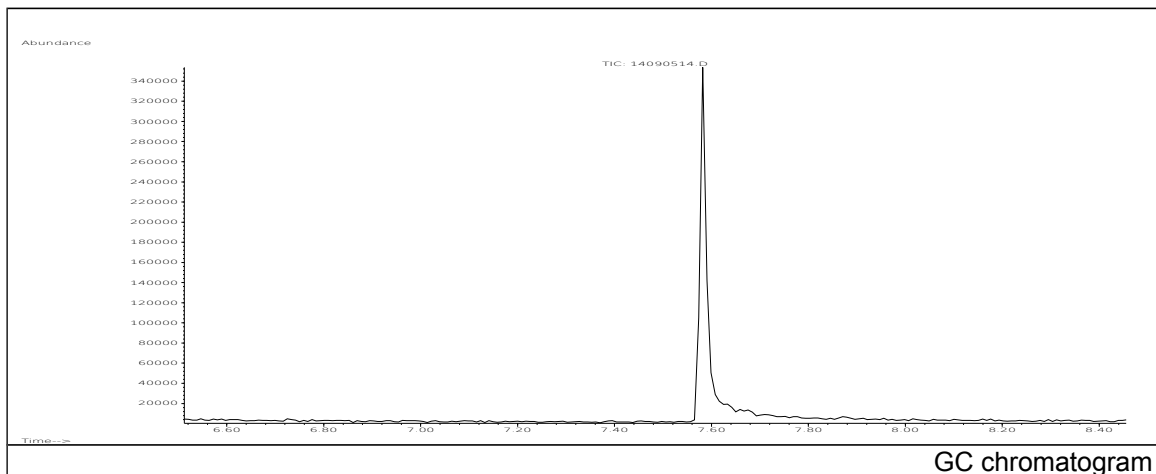


JRC CRL - FCM Database / GC-MS

Sample Name: Methacrylic anhydride
Solvent: Ethanol
Concentration: 100 µg/mL

Date: 14/09/2005
CAS: 000760-93-0
PM ref: 21460 [U.R.N. M030]



m/z	Abundance	Ion Intensity %	m/z	Abundance	Ion Intensity %
40.10	16272,0	9,11	69.10	178560,0	100,00
41.10	115792,0	64,85	70.10	8923,0	5,00
42.10	4712,0	2,64	82.10	686,0	0,38
43.00	763,0	0,43	95.00	1846,0	1,03
45.00	1224,0	0,69	98.10	15468,0	8,66
53.10	1630,0	0,91	99.10	1129,0	0,63
54.00	724,0	0,41	126.00	1230,0	0,69
67.00	2139,0	1,20			

Spectrometer: HEWLETT PACKARD GC/MS 6890/5973
Inlet system: capillary GC/MS
Scan Range: 40-700 amu
Source temperature: 230 °C

Flow: 1.2 mL/min
Column: DB 17-HT (30 m x 0.25 mm x 0.15 µm)
Programme temperature: 40 °C (3 min); 20 °C/min
(350 °C); 350 °C (20 min)