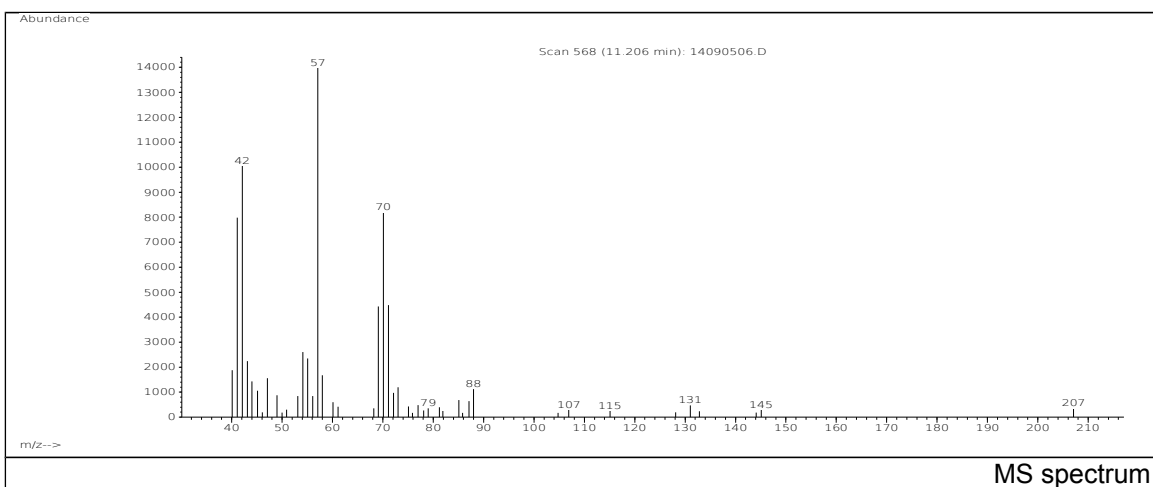
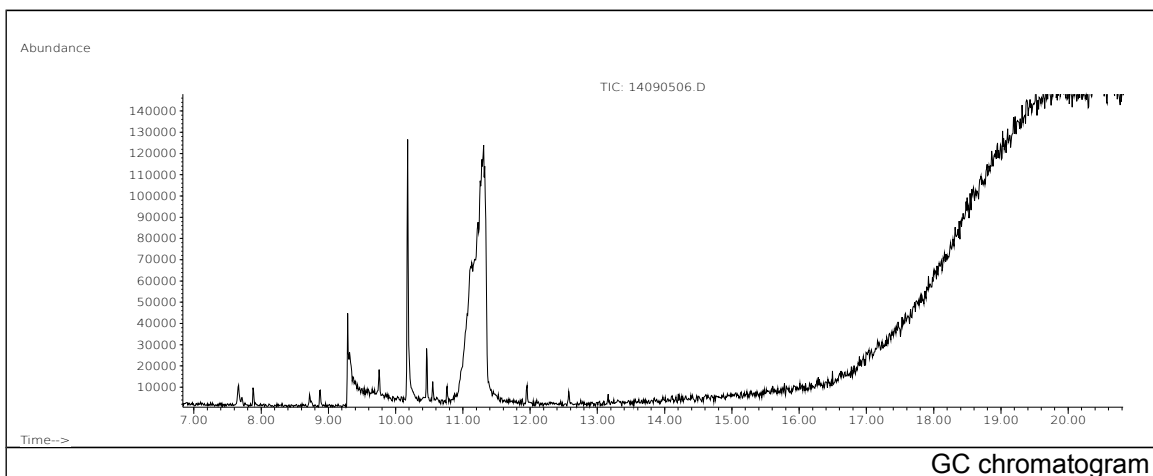


JRC CRL - FCM Database / GC-MS

Sample Name: Pentaerythritol
Solvent: Ethanol
Concentration: 100 µg/mL

Date: 14/09/2005
CAS: 000115-77-5
PM ref: 22840 [U.R.N. M019]



m/z	Abundance	Ion Intensity %	m/z	Abundance	Ion Intensity %
40.10	2278,0	11,22	57.10	20304,0	100,00
41.10	9171,0	45,17	58.10	2368,0	11,66
42.10	12652,0	62,31	60.10	1576,0	7,76
43.10	2439,0	12,01	69.10	5168,0	25,45
45.10	1407,0	6,93	70.10	10876,0	53,57
47.10	2197,0	10,82	71.10	4906,0	24,16
54.10	4005,0	19,73	88.10	1425,0	7,02
55.10	2907,0	14,32			

Spectrometer: HEWLETT PACKARD GC/MS 6890/5973
Inlet system: capillary GC/MS
Scan Range: 40-700 amu
Source temperature: 230 °C

Flow: 1.2 mL/min
Column: DB 17-HT (30 m x 0.25 mm x 0.15 µm)
Programme temperature: 40 °C (3 min); 20 °C/min
(350 °C); 350 °C (20 min)