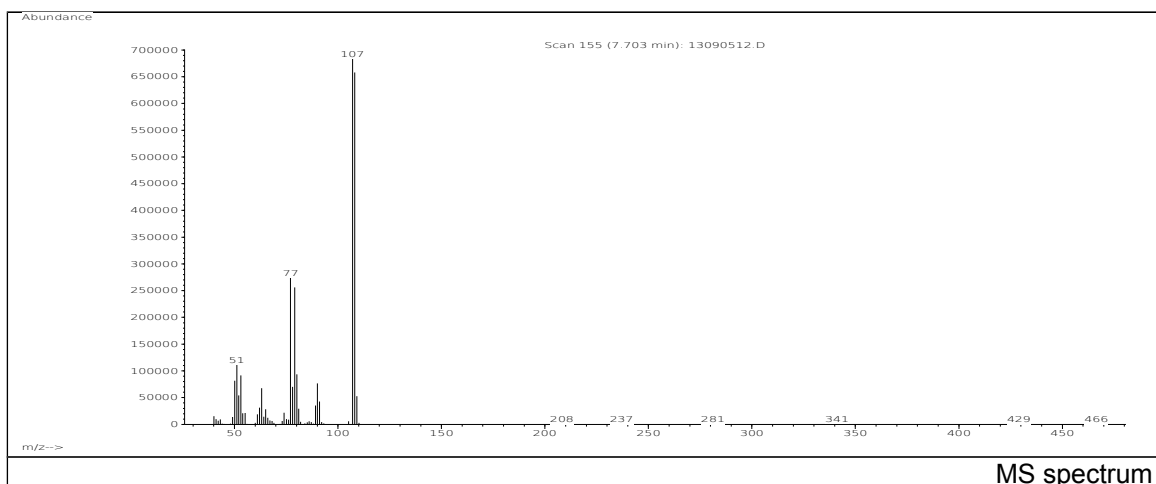
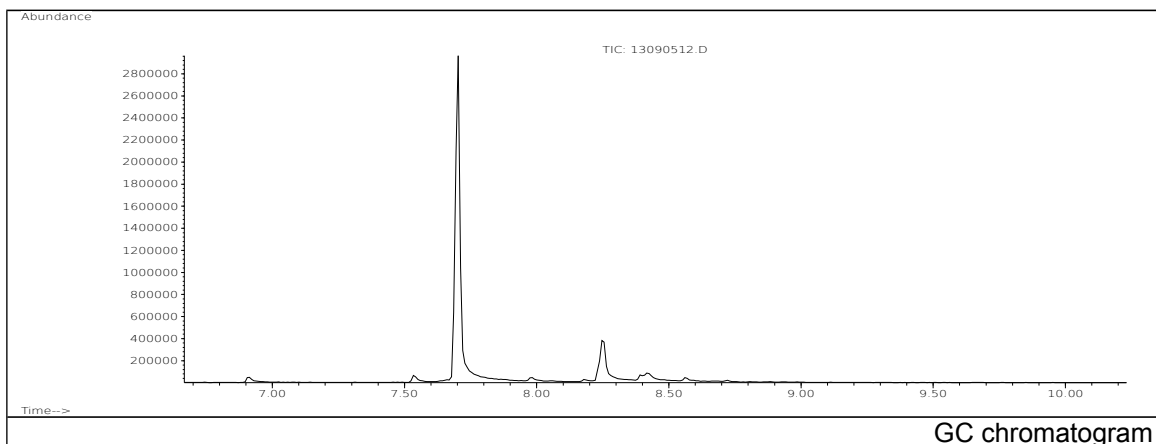


JRC CRL - FCM Database / GC-MS

Sample Name: m-Cresol
Solvent: Ethanol
Concentration: 100 µg/mL

Date: 13/09/2005
CAS: 000108-39-4
PM ref: 14710 [U.R.N. M013]



| m/z | Abundance | Ion Intensity % | m/z | Abundance | Ion Intensity % |
|-------|-----------|-----------------|--------|-----------|-----------------|
| 50.10 | 56528,0 | 11,88 | 80.10 | 62248,0 | 13,08 |
| 51.10 | 82040,0 | 17,24 | 89.10 | 27424,0 | 5,76 |
| 52.10 | 38176,0 | 8,02 | 90.10 | 53560,0 | 11,25 |
| 53.10 | 61928,0 | 13,01 | 91.10 | 31552,0 | 6,63 |
| 63.10 | 49248,0 | 10,35 | 107.10 | 475968,0 | 100,00 |
| 77.10 | 189120,0 | 39,73 | 108.10 | 457408,0 | 96,10 |
| 78.10 | 50360,0 | 10,58 | 109.10 | 34256,0 | 7,20 |
| 79.10 | 184960,0 | 38,86 | | | |

Spectrometer: HEWLETT PACKARD GC/MS 6890/5973
Inlet system: capillary GC/MS
Scan Range: 40-700 amu
Source temperature: 230 °C

Flow: 1.2 mL/min
Column: DB 17-HT (30 m x 0.25 mm x 0.15 µm)
Programme temperature: 40 °C (3 min); 20 °C/min
(350 °C); 350 °C (20 min)