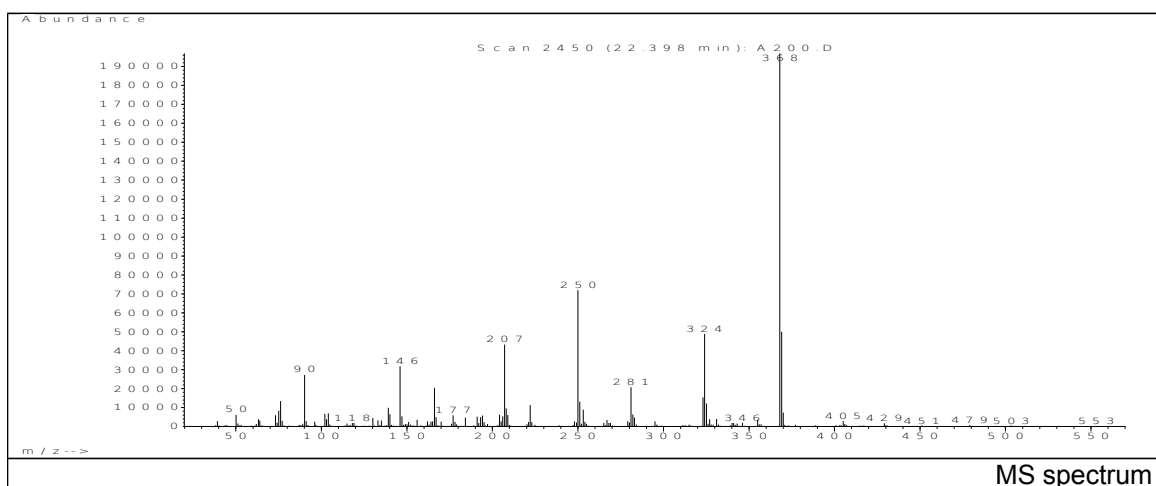
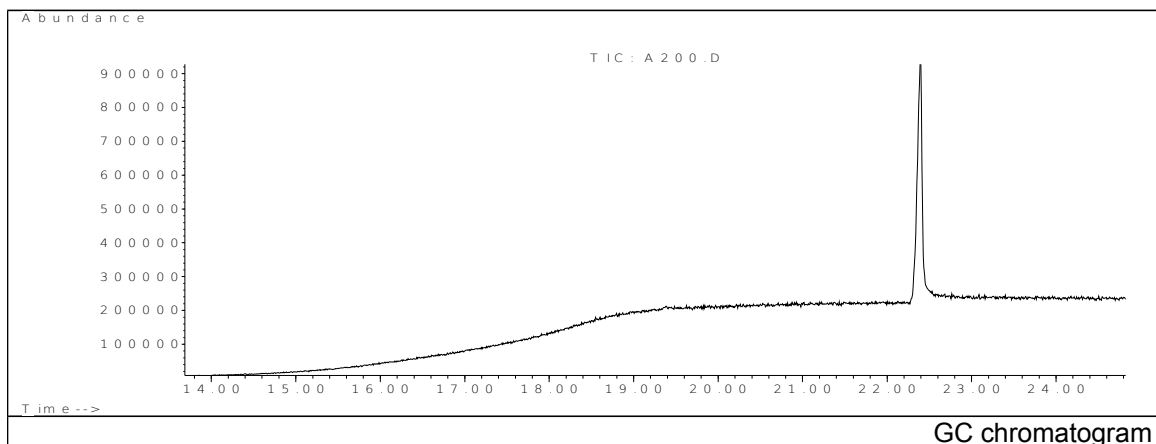


JRC CRL - FCM Database / GC-MS

Sample Name: 2,2'-(1,4-phenylene)bis[4H-3,1-benzoxazin-4-one]
Solvent: dichloromethane
Concentration: 100 µg/mL

Date: 31/01/2007
CAS: 018600-59-4
PM ref: - [U.R.N. A200]



m/z	Abundance	Ion Intensity %	m/z	Abundance	Ion Intensity %
76.15	13463.0	6.83	250.05	71888.0	36.49
90.15	27528.0	13.97	251.05	13106.0	6.65
139.05	9914.0	5.03	281.05	20776.0	10.55
146.05	31856.0	16.17	323.15	15366.0	7.80
166.05	20400.0	10.36	324.05	48832.0	24.79
207.05	43272.0	21.97	325.05	12103.0	6.14
208.05	9544.0	4.84	368.05	196992.0	100.00
222.05	11295.0	5.73	369.05	49968.0	25.37

Spectrometer: HEWLETT PACKARD GC/MS 6890/5973
Inlet system: capillary GC/MS
Scan Range: 40-700 amu
Source temperature: 230°C

Flow: 1.2 mL/min
Column: HP-5MS (30 m x 0.25 mm x 0.25 µm)
Programme temperature: 60°C; 15°C/min (300°C)
10°C/min (325°C); 6.5 min