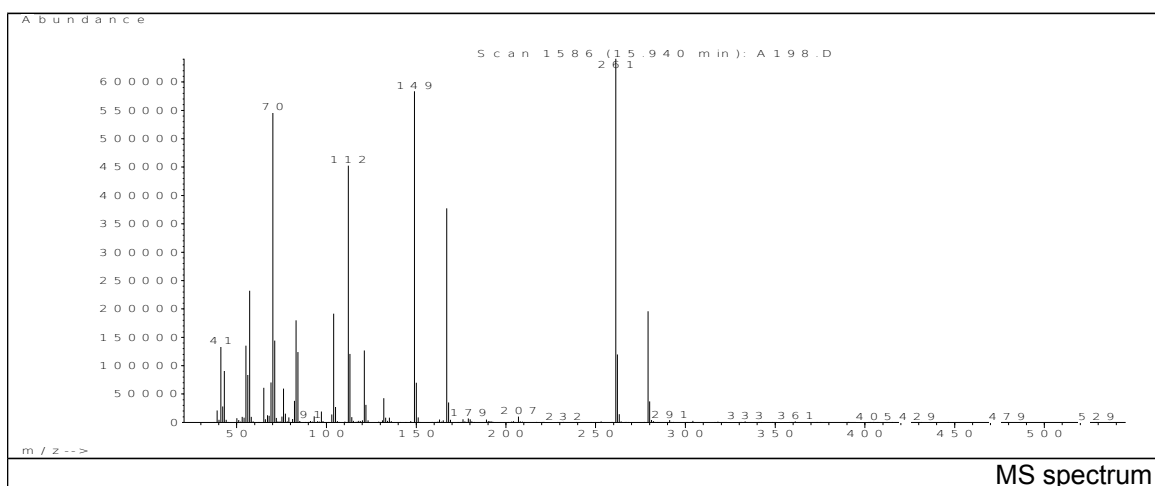
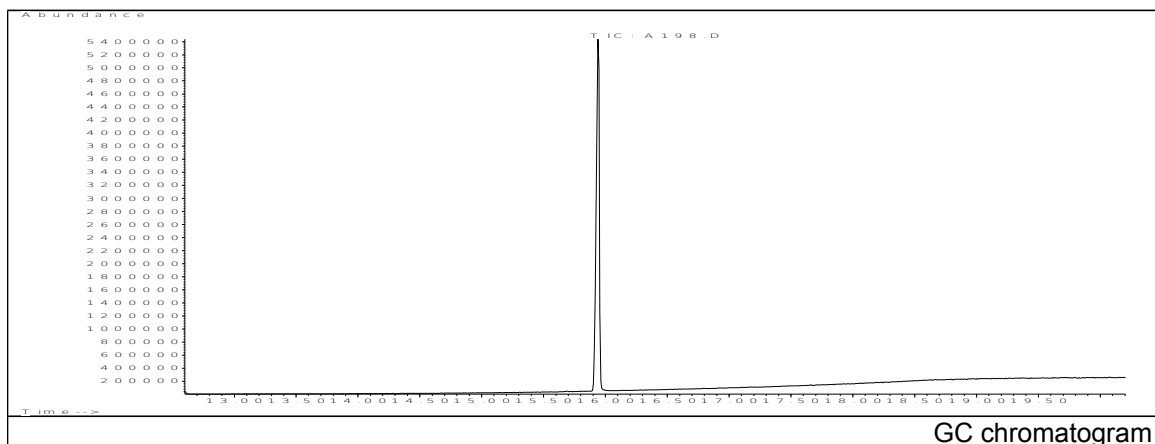


# JRC CRL - FCM Database / GC-MS

Sample Name: bis(2-ethylhexyl)-1,4-benzenedicarboxylate  
Solvent: hexane  
Concentration: 100 µg/mL

Date: 31/01/2007  
CAS: 006422-86-2 + 0063468-13-3  
PM ref: - [U.R.N. A198]



m/z	Abundance	Ion Intensity %	m/z	Abundance	Ion Intensity %
41.15	133568.0	20.84	112.15	452480.0	70.60
55.15	135424.0	21.13	113.15	120952.0	18.87
57.15	232256.0	36.24	121.05	126920.0	19.80
70.15	546304.0	85.24	149.05	583424.0	91.03
71.15	144384.0	22.53	167.05	377408.0	58.89
83.15	180096.0	28.10	261.15	640896.0	100.00
84.15	124088.0	19.36	262.15	119768.0	18.69
104.05	191616.0	29.90	279.15	195776.0	30.55

Spectrometer: HEWLETT PACKARD GC/MS 6890/5973  
Inlet system: capillary GC/MS  
Scan Range: 40-700 amu  
Source temperature: 230°C

Flow: 1.2 mL/min  
Column: HP-5MS (30 m x 0.25 mm x 0.25 µm)  
Programme temperature: 60°C; 15°C/min (300°C)  
10°C/min (325°C); 6.5 min