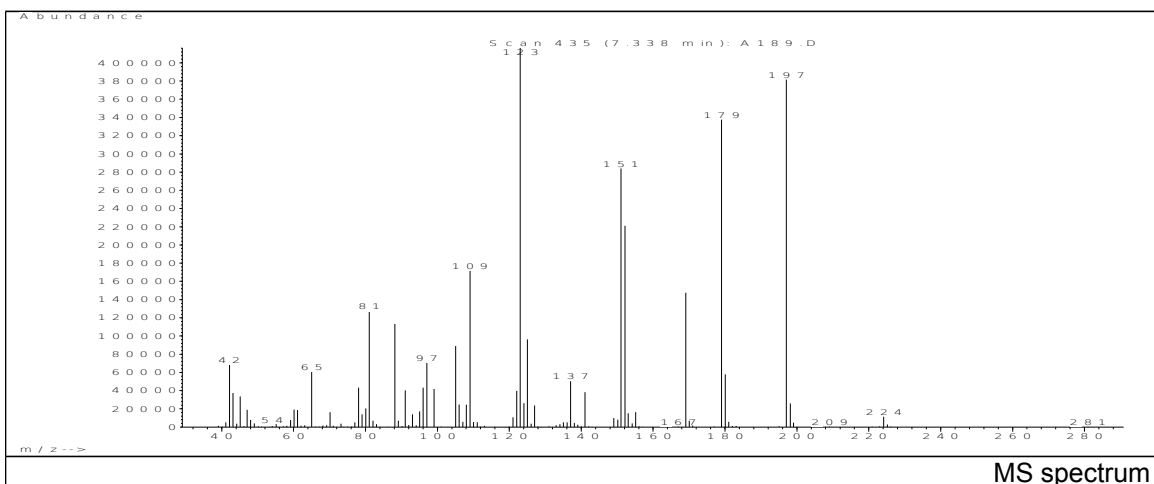
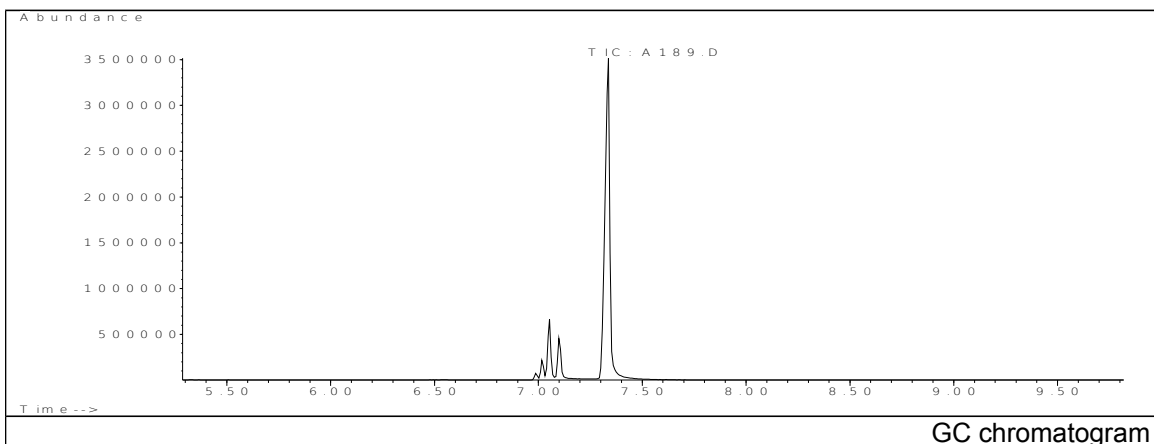


JRC CRL - FCM Database / GC-MS

Sample Name: Triethyl phosphonoacetate
Solvent: Acetonitrile
Concentration: 100 µg/mL

Date: 31/01/2007
CAS: 000867-13-0
PM ref: - [U.R.N. A189]



m/z	Abundance	Ion Intensity %	m/z	Abundance	Ion Intensity %
42.15	68344.0	16.41	125.05	96168.0	23.09
65.05	60424.0	14.51	137.05	50240.0	12.06
81.05	127472.0	30.61	151.05	284096.0	68.22
88.15	113136.0	27.17	152.15	220992.0	53.07
97.05	70416.0	16.91	169.05	147712.0	35.47
105.05	88864.0	21.34	179.05	337664.0	81.08
109.05	171520.0	41.19	180.05	57840.0	13.89
123.05	416448.0	100.00	197.05	381504.0	91.61

Spectrometer: HEWLETT PACKARD GC/MS 6890/5973
Inlet system: capillary GC/MS
Scan Range: 40-700 amu
Source temperature: 230°C

Flow: 1.2 mL/min
Column: HP-5MS (30 m x 0.25 mm x 0.25 µm)
Programme temperature: 60°C; 15°C/min (300°C)
10°C/min (325°C); 6.5 min