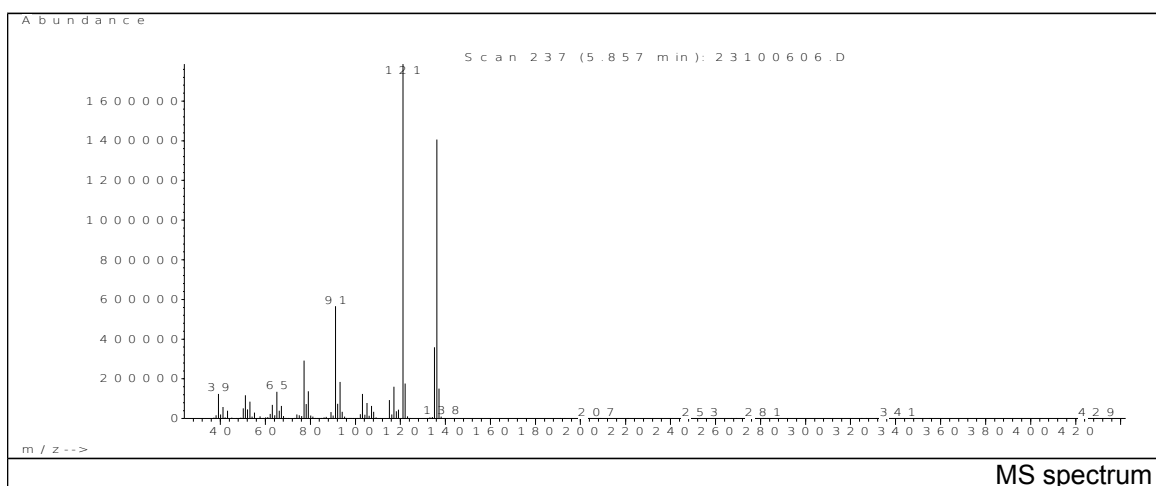
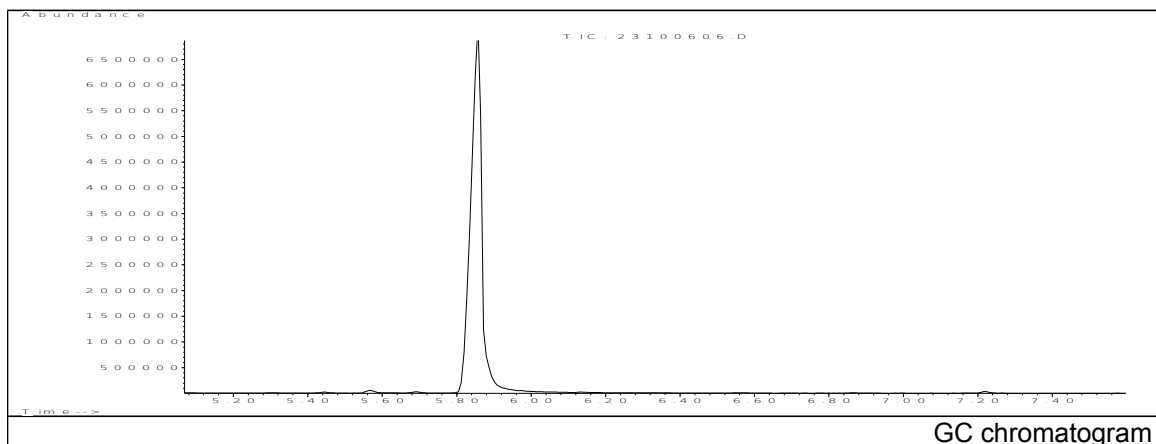


# JRC CRL - FCM Database / GC-MS

Sample Name: 2,3,6-trimethylphenol  
Solvent: Methanol  
Concentration: 100 µg/mL

Date: 25/10/2006  
CAS: 002416-94-6  
PM ref: --- [U.R.N. A186]



m/z	Abundance	Ion Intensity %	m/z	Abundance	Ion Intensity %
39.15	124192.0	6.95	103.15	124400.0	6.96
51.15	116928.0	6.54	115.15	93656.0	5.24
53.15	85056.0	4.76	117.15	160320.0	8.97
65.15	134528.0	7.53	121.15	1786880.0	100.00
77.15	292032.0	16.34	122.15	176832.0	9.90
79.15	137472.0	7.69	135.15	359808.0	20.14
91.15	566080.0	31.68	136.15	1405440.0	78.65
93.15	184384.0	10.32	137.15	150528.0	8.42

Spectrometer: HEWLETT PACKARD GC/MS 6890/5973  
Inlet system: capillary GC/MS  
Scan Range: 40-700 amu  
Source temperature: 230°C

Flow: 1.2 mL/min  
Column: HP-5MS (30 m x 0.25 mm x 0.25 µm)  
Programme temperature: 60°C; 15°C/min (250°C)  
10°C/min (325°C); 10 min