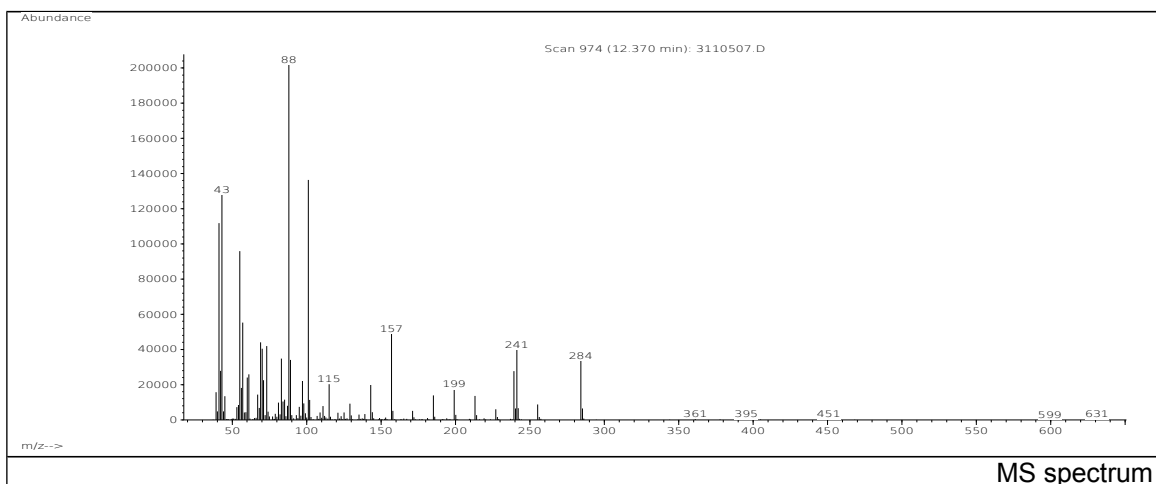
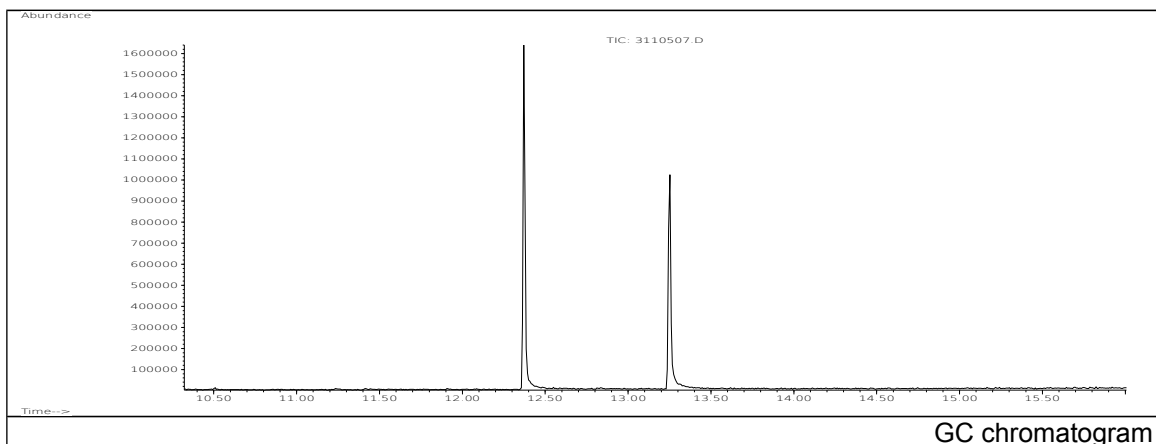


JRC CRL - FCM Database / GC-MS

Sample Name: Pentaerythritol Distearate (Di-ester)
Solvent: Ethanol
Concentration: 100 µg/mL

Date: 17/01/2005
CAS: 085116-93-4
PM ref: 31352 [U.R.N. A173]

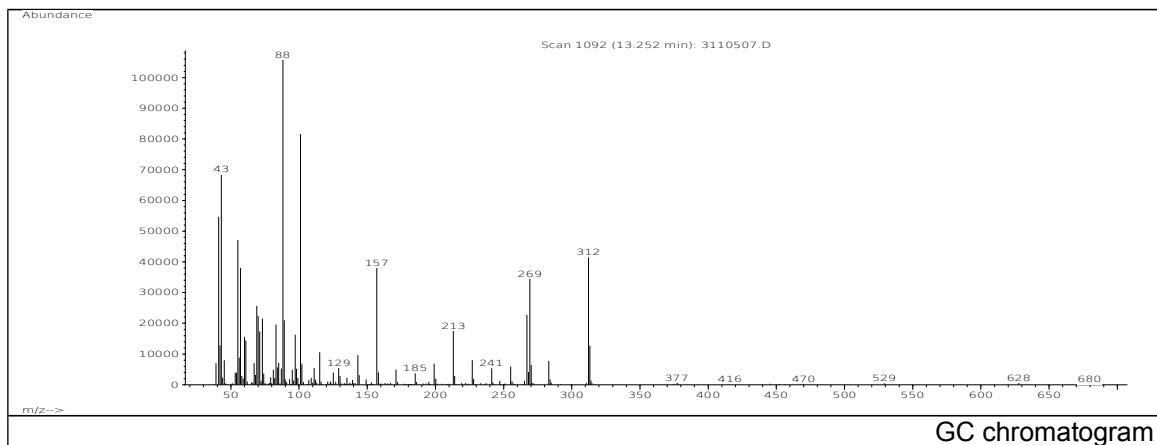


m/z	Abundance	Ion Intensity %	m/z	Abundance	Ion Intensity %
41.10	111784,0	53,79	83.10	34744,0	16,72
42.10	27888,0	13,42	88.10	207808,0	100,00
43.10	127912,0	61,55	89.10	34112,0	16,42
55.10	95912,0	46,15	101.10	136320,0	65,60
57.10	55328,0	26,62	157.10	48840,0	23,50
69.10	43992,0	21,17	241.20	39752,0	19,13
70.10	40360,0	19,42	284.30	33416,0	16,08
73.10	41984,0	20,20			

Spectrometer: HEWLETT PACKARD GC/MS 6890/5973
Inlet system: capillary GC/MS
Scan Range: 40-700 amu
Source temperature: 230 °C

Flow: 1.2 mL/min
Column: DB 17-HT (30 m x 0.25 mm x 0.15 µm)
Programme temperature: 40 °C (3 min); 20 °C/min
(350 °C); 350 °C (20 min)

JRC CRL - FCM Database / GC-MS



m/z	Abundance	Ion Intensity %	m/z	Abundance	Ion Intensity %
41.10	54688,0	26,32	88.10	108856,0	52,38
43.10	68480,0	32,95	89.10	21024,0	10,12
55.10	47128,0	22,68	101.10	81536,0	39,24
57.10	38032,0	18,30	157.10	38064,0	18,32
69.10	25648,0	12,34	267.20	22696,0	10,92
70.00	22360,0	10,76	269.20	34448,0	16,58
73.10	21544,0	10,37	312.30	41448,0	19,95
83.10	19584,0	9,42			

Spectrometer: HEWLETT PACKARD GC/MS 6890/5973
 Inlet system: capillary GC/MS
 Scan Range: 40-700 amu
 Source temperature: 230 °C

Flow: 1.2 mL/min
 Column: DB 17-HT (30 m x 0.25 mm x 0.15 µm)
 Programme temperature: 40 °C (3 min); 20 °C/min
 (350 °C); 350 °C (20 min)