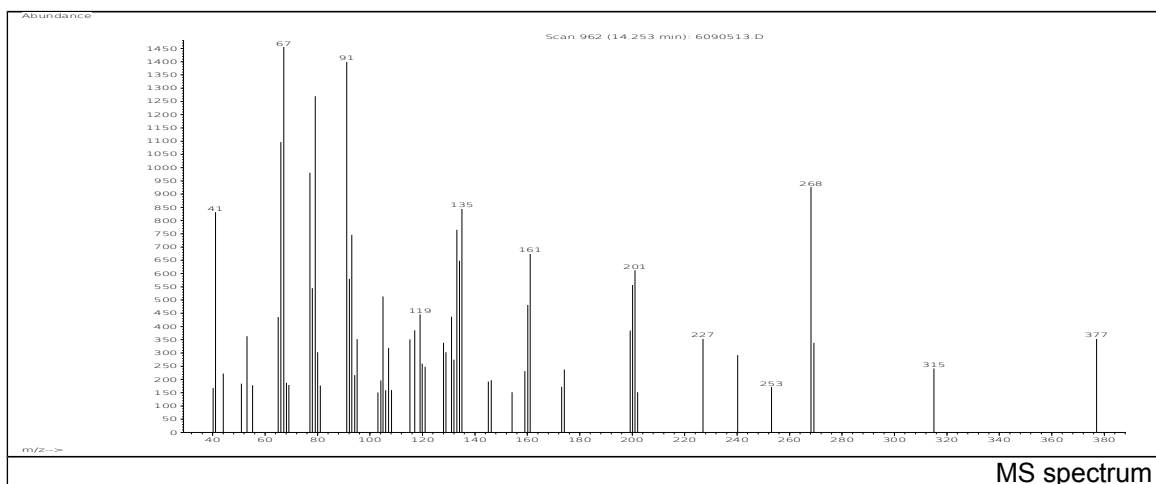
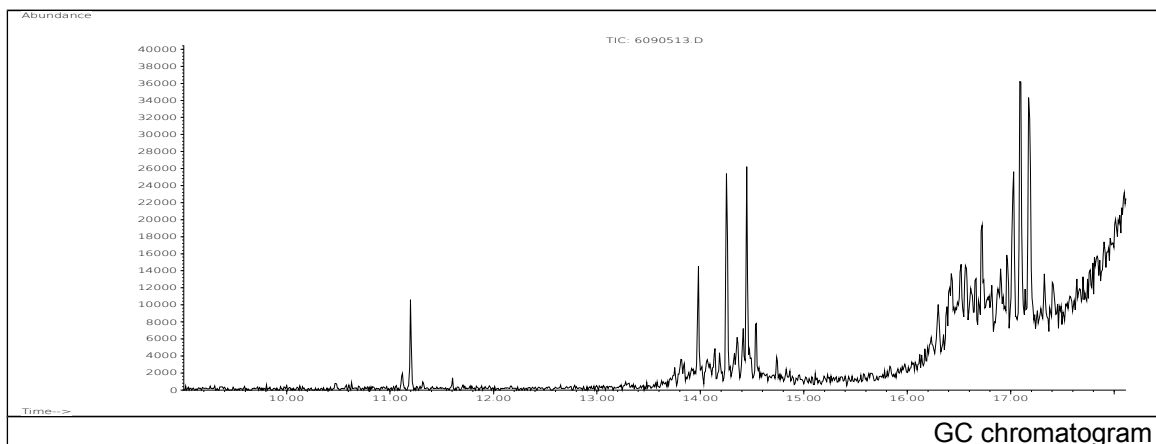


JRC CRL - FCM Database / GC-MS

Sample Name: Petroleum Hydrocarbon Resins (hydrogenated) Date: 30/08/2005
 Solvent: Hexane CAS: 068132-00-3; 068441-37-2; 068441-38-3; 088526-47-0; 068132-00-3
 Concentration: 100 µg/mL PM ref: 47520; 66950; 66960; 72081/10; 76680 [U.R.N. 132]

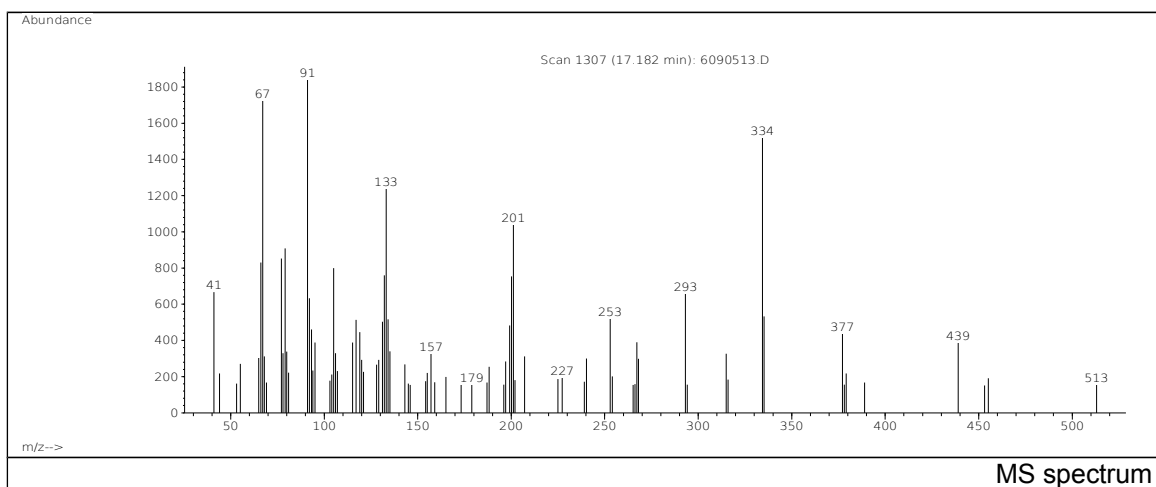


m/z	Abundance	Ion Intensity %	m/z	Abundance	Ion Intensity %
41.10	832,0	56,18	133.10	765,0	51,65
66.00	1096,0	74,00	134.10	648,0	43,75
67.10	1481,0	100,00	135.10	845,0	57,06
77.10	981,0	66,24	161.10	675,0	45,58
79.10	1270,0	85,75	200.10	557,0	37,61
91.10	1400,0	94,53	201.10	612,0	41,32
92.10	580,0	39,16	268.20	926,0	62,53
93.10	746,0	50,37			

Spectrometer: HEWLETT PACKARD GC/MS 6890/5973
 Inlet system: capillary GC/MS
 Scan Range: 40-700 amu
 Source temperature: 230 °C

Flow: 1.2 mL/min
 Column: DB 17-HT (30 m x 0.25 mm x 0.15 µm)
 Programme temperature: 40 °C (3 min); 20 °C/min
 (350 °C); 350 °C (20 min)

JRC CRL - FCM Database / GC-MS



m/z	Abundance	Ion Intensity %	m/z	Abundance	Ion Intensity %
41.10	667,0	34,88	132.20	759,0	39,70
66.10	830,0	43,41	133.10	1238,0	64,75
67.10	1725,0	90,22	200.20	753,0	39,38
77.10	853,0	44,61	201.20	1039,0	54,34
79.10	908,0	47,49	293.20	659,0	34,47
91.10	1912,0	100,00	334.30	1520,0	79,50
92.10	633,0	33,11	335.20	532,0	27,82
105.10	799,0	41,79			

Spectrometer: HEWLETT PACKARD GC/MS 6890/5973
 Inlet system: capillary GC/MS
 Scan Range: 40-700 amu
 Source temperature: 230 °C

Flow: 1.2 mL/min
 Column: DB 17-HT (30 m x 0.25 mm x 0.15 µm)
 Programme temperature: 40 °C (3 min); 20 °C/min
 (350 °C); 350 °C (20 min)