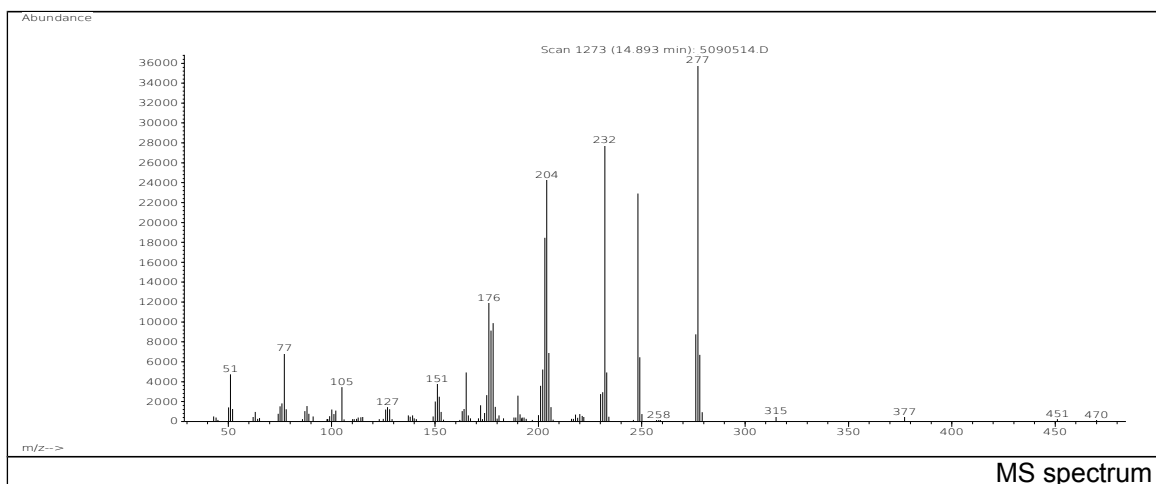
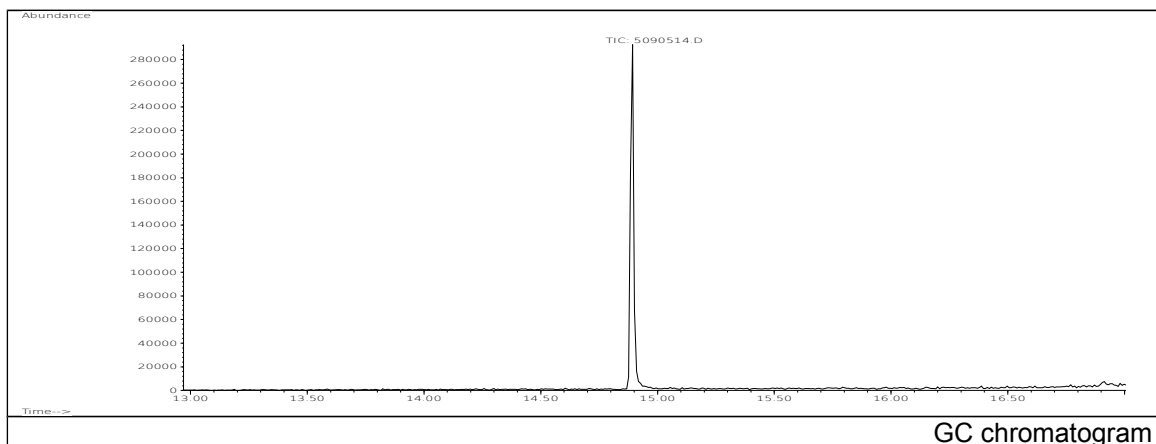


# JRC CRL - FCM Database / GC-MS

Sample Name: 2-Cyano-3,3-diphenylacrylic acid, ethyl ester  
Solvent: Hexane  
Concentration: 100 µg/mL

Date: 30/08/2005  
CAS: 005232-99-5  
PM ref: 45640 [U.R.N. A120]



m/z	Abundance	Ion Intensity %	m/z	Abundance	Ion Intensity %
77.10	6839,0	18,56	205.10	6887,0	18,69
165.10	4920,0	13,36	232.10	27736,0	75,29
176.10	11918,0	32,35	248.10	22912,0	62,19
177.10	9144,0	24,82	249.10	6465,0	17,55
178.10	9895,0	26,86	276.10	8764,0	23,79
202.10	5219,0	14,17	277.20	36840,0	100,00
203.10	18456,0	50,10	278.10	6684,0	18,14
204.10	24272,0	65,88			

Spectrometer: HEWLETT PACKARD GC/MS 6890/5973  
Inlet system: capillary GC/MS  
Scan Range: 40-700 amu  
Source temperature: 230 °C

Flow: 1.2 mL/min  
Column: DB 17-HT (30 m x 0.25 mm x 0.15 µm)  
Programme temperature: 40 °C (3 min); 20 °C/min  
(350 °C); 350 °C (20 min)