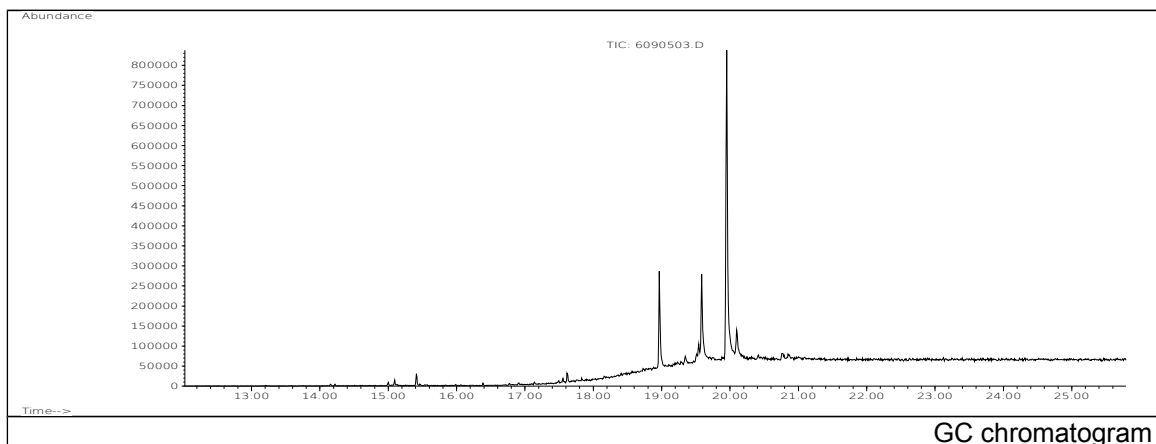
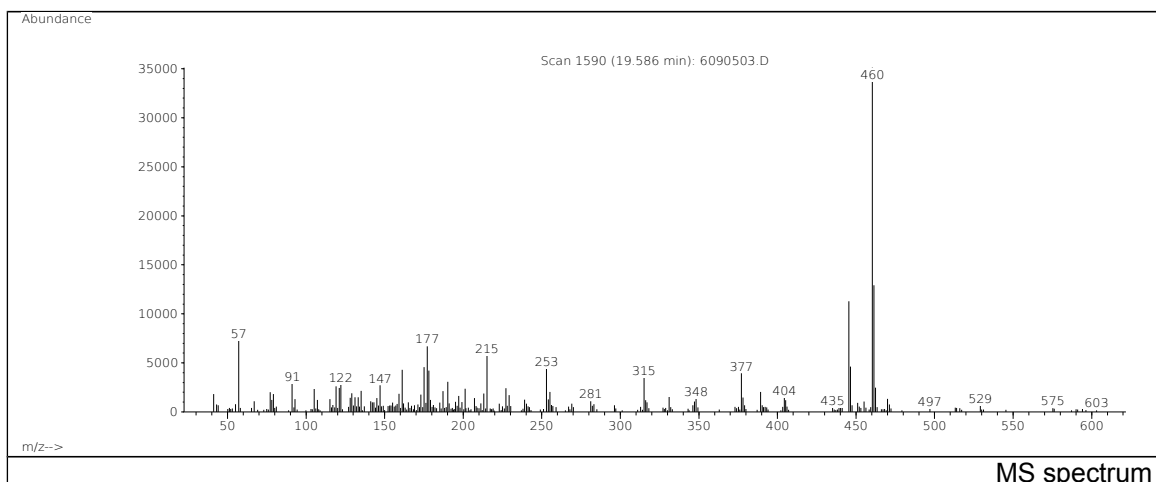


JRC CRL - FCM Database / GC-MS

Sample Name: p-Cresol-dicyclopentadiene-isobutylene, copolymer Date: 30/08/2005
 Solvent: Toluene CAS: 068610-51-5
 Concentration: 100 µg/mL PM ref: 45450 [U.R.N. A117]



GC chromatogram



MS spectrum

m/z	Abundance	Ion Intensity %	m/z	Abundance	Ion Intensity %
57.10	13123,0	12,09	215.20	12292,0	11,33
121.10	6193,0	5,71	255.20	5230,0	4,82
122.10	6775,0	6,24	445.40	37392,0	34,46
161.10	9182,0	8,46	446.40	13514,0	12,45
175.20	10145,0	9,35	460.40	108504,0	100,00
177.20	12579,0	11,59	461.40	37368,0	34,44
190.10	6396,0	5,89	462.40	6943,0	6,40
201.10	5161,0	4,76			

Spectrometer: HEWLETT PACKARD GC/MS 6890/5973
 Inlet system: capillary GC/MS
 Scan Range: 40-700 amu
 Source temperature: 230 °C

Flow: 1.2 mL/min
 Column: DB 17-HT (30 m x 0.25 mm x 0.15 µm)
 Programme temperature: 40 °C (3 min); 20 °C/min
 (350 °C); 350 °C (20 min)