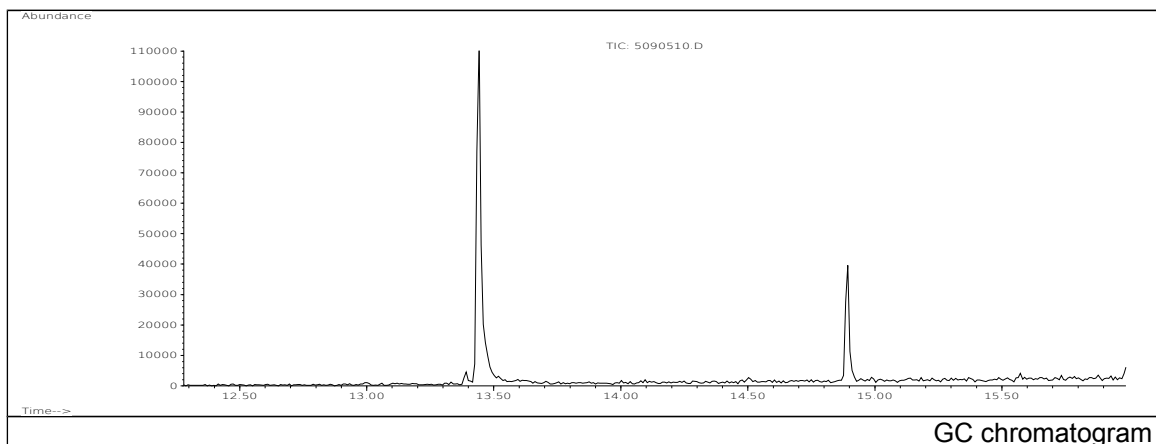


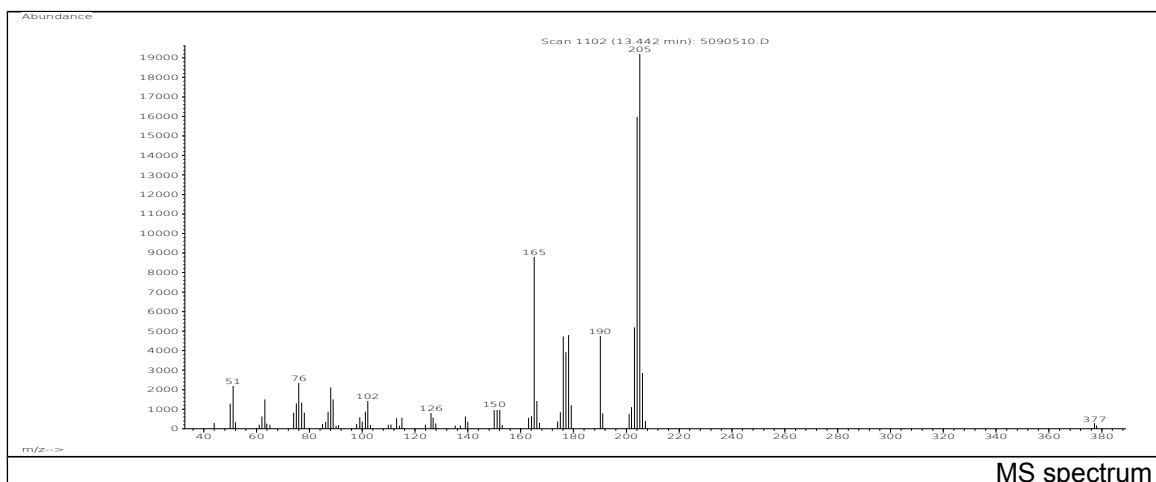
# JRC CRL - FCM Database / GC-MS

Sample Name: Syrups, hydrolysed starch, hydrogenated  
Solvent: Ethanol  
Concentration: 100 µg/mL

Date: 30/08/2005  
CAS: 068425-17-2  
PM ref: 24903 [U.R.N. A114]



GC chromatogram



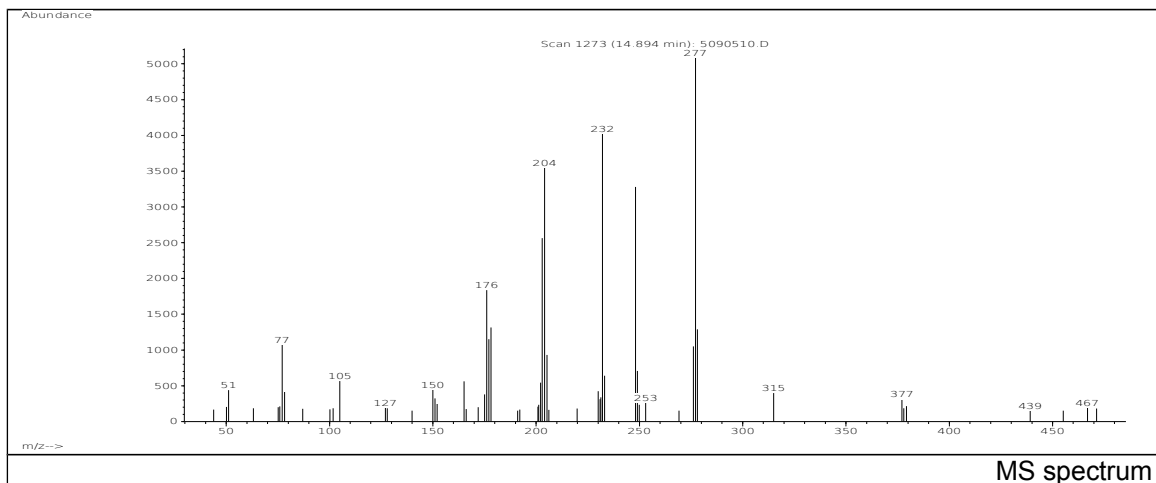
MS spectrum

m/z	Abundance	Ion Intensity %	m/z	Abundance	Ion Intensity %
51.10	2211,0	11,25	177.10	3919,0	19,95
63.10	1507,0	7,67	178.10	4796,0	24,41
76.00	2357,0	12,00	190.10	4752,0	24,19
88.10	2116,0	10,77	203.10	5189,0	26,41
89.00	1498,0	7,62	204.10	15976,0	81,31
102.10	1452,0	7,39	205.10	19648,0	100,00
165.10	8841,0	45,00	206.10	2854,0	14,53
176.10	4731,0	24,08			

Spectrometer: HEWLETT PACKARD GC/MS 6890/5973  
Inlet system: capillary GC/MS  
Scan Range: 40-700 amu  
Source temperature: 230 °C

Flow: 1.2 mL/min  
Column: DB 17-HT (30 m x 0.25 mm x 0.15 µm)  
Programme temperature: 40 °C (3 min); 20 °C/min  
(350 °C); 350 °C (20 min)

# JRC CRL - FCM Database / GC-MS



m/z	Abundance	Ion Intensity %	m/z	Abundance	Ion Intensity %
77.10	1073,0	5,46	232.10	4026,0	20,49
105.00	567,0	2,89	233.20	640,0	3,26
176.10	1838,0	9,35	248.10	3279,0	16,69
177.10	1150,0	5,85	249.00	708,0	3,60
178.10	1316,0	6,70	276.10	1052,0	5,35
203.00	2564,0	13,05	277.10	5214,0	26,54
204.10	3549,0	18,06	278.10	1291,0	6,57
205.20	931,0	4,74			

Spectrometer: HEWLETT PACKARD GC/MS 6890/5973  
 Inlet system: capillary GC/MS  
 Scan Range: 40-700 amu  
 Source temperature: 230 °C

Flow: 1.2 mL/min  
 Column: DB 17-HT (30 m x 0.25 mm x 0.15 µm)  
 Programme temperature: 40 °C (3 min); 20 °C/min  
 (350 °C); 350 °C (20 min)