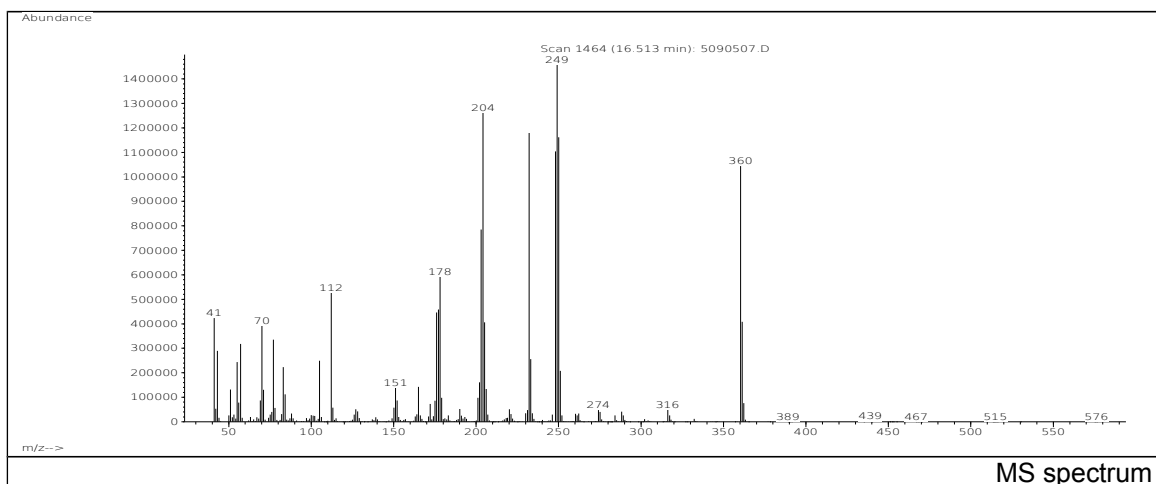
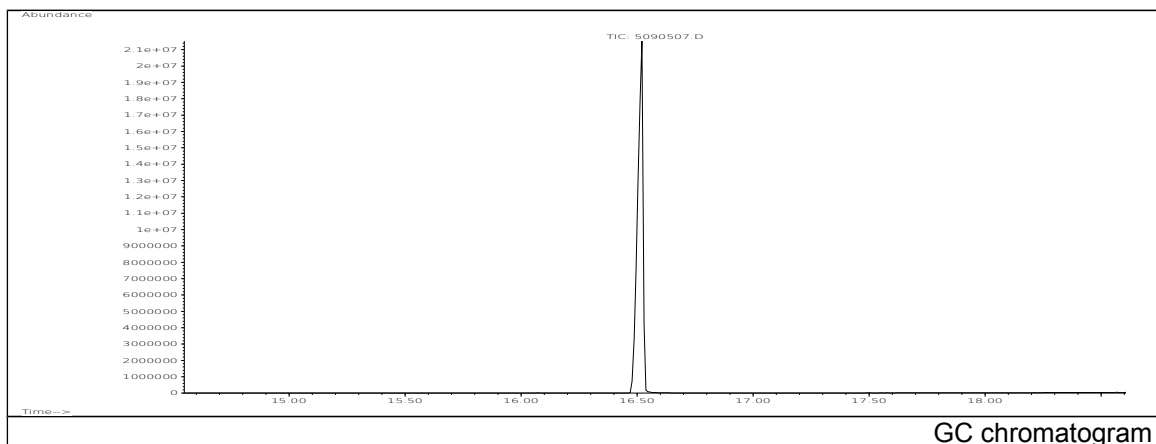


JRC CRL - FCM Database / GC-MS

Sample Name: 2-Cyano-3,3-diphenylacrylic acid, 2-ethylhexyl ester
Solvent: Hexane
Concentration: 100 µg/mL

Date: 30/08/2005
CAS: 006197-30-4
PM ref: 45650 [U.R.N. A112]



m/z	Abundance	Ion Intensity %	m/z	Abundance	Ion Intensity %
41.10	423680,0	28,25	205.10	405760,0	27,06
70.10	392192,0	26,15	232.10	1179648,0	78,66
112.20	525376,0	35,03	248.10	1103872,0	73,61
176.10	445952,0	29,74	249.10	1499648,0	100,00
177.10	458752,0	30,59	250.10	1162240,0	77,50
178.10	590976,0	39,41	360.30	1044544,0	69,65
203.10	785152,0	52,36	361.30	408448,0	27,24
204.10	1261056,0	84,09			

Spectrometer: HEWLETT PACKARD GC/MS 6890/5973
Inlet system: capillary GC/MS
Scan Range: 40-700 amu
Source temperature: 230 °C

Flow: 1.2 mL/min
Column: DB 17-HT (30 m x 0.25 mm x 0.15 µm)
Programme temperature: 40 °C (3 min); 20 °C/min
(350 °C); 350 °C (20 min)