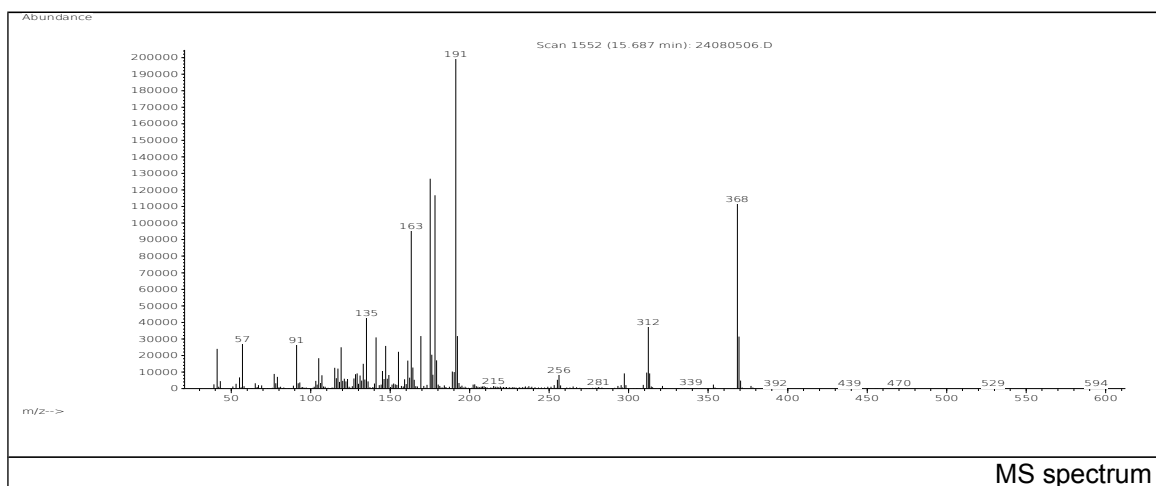
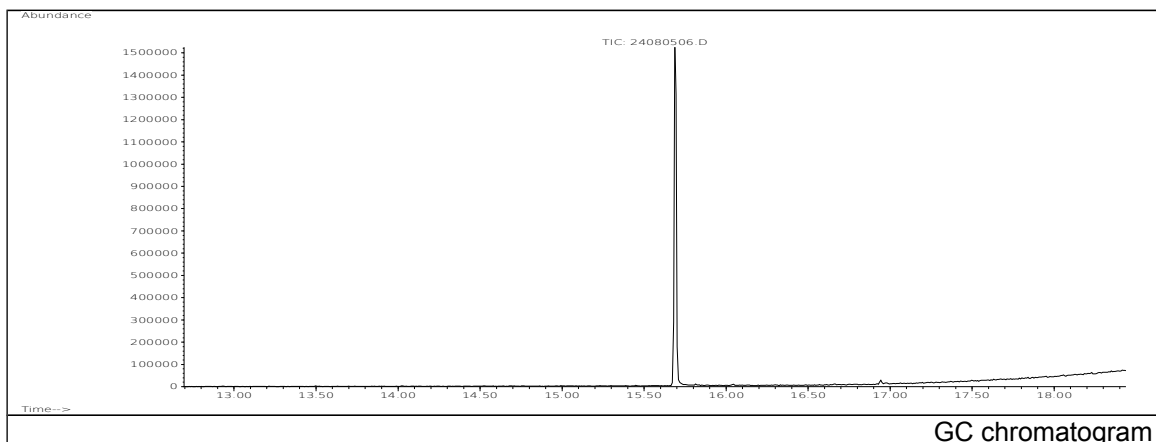


JRC CRL - FCM Database / GC-MS

Sample Name: 2,2'-Methylene bis(4-ethyl-6-tert-butylphenol)
Solvent: Methanol
Concentration: 100 µg/mL

Date: 24/08/2005
CAS: 000088-24-4
PM ref: 66400 [U.R.N. A068]



m/z	Abundance	Ion Intensity %	m/z	Abundance	Ion Intensity %
57.10	27144,0	13,26	175.20	126856,0	61,98
91.10	26504,0	12,95	178.20	116824,0	57,08
119.10	25000,0	12,21	191.20	204672,0	100,00
135.10	42784,0	20,90	192.20	31728,0	15,50
141.10	31000,0	15,15	312.30	37344,0	18,25
147.10	25816,0	12,61	368.30	111608,0	54,53
163.20	95408,0	46,62	369.30	31376,0	15,33
169.20	31704,0	15,49			

Spectrometer: HEWLETT PACKARD GC/MS 6890/5973
Inlet system: capillary GC/MS
Scan Range: 40-700 amu
Source temperature: 230 °C

Flow: 1.2 mL/min
Column: DB 17-HT (30 m x 0.25 mm x 0.15 µm)
Programme temperature: 40 °C (3 min); 20 °C/min
(350 °C); 350 °C (20 min)