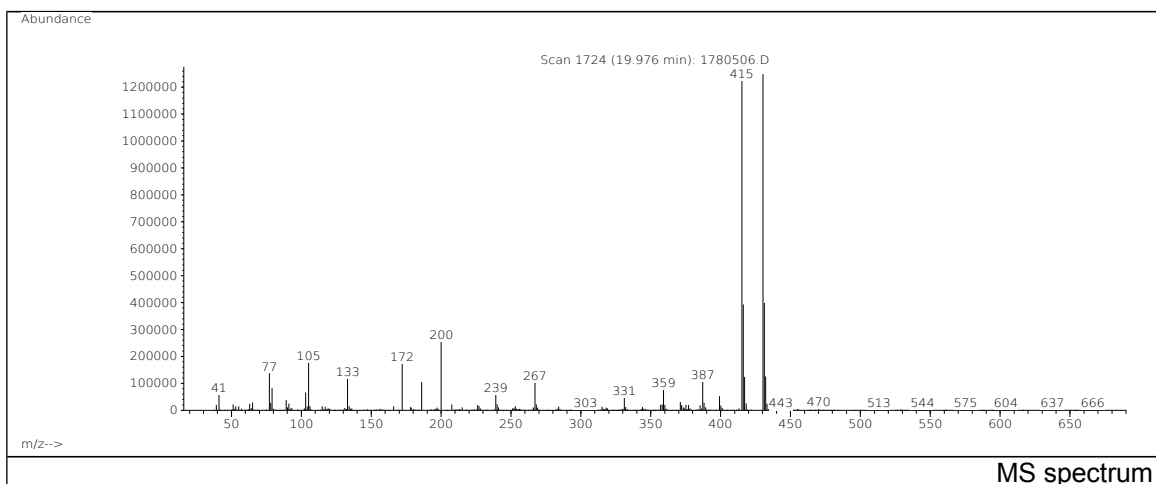
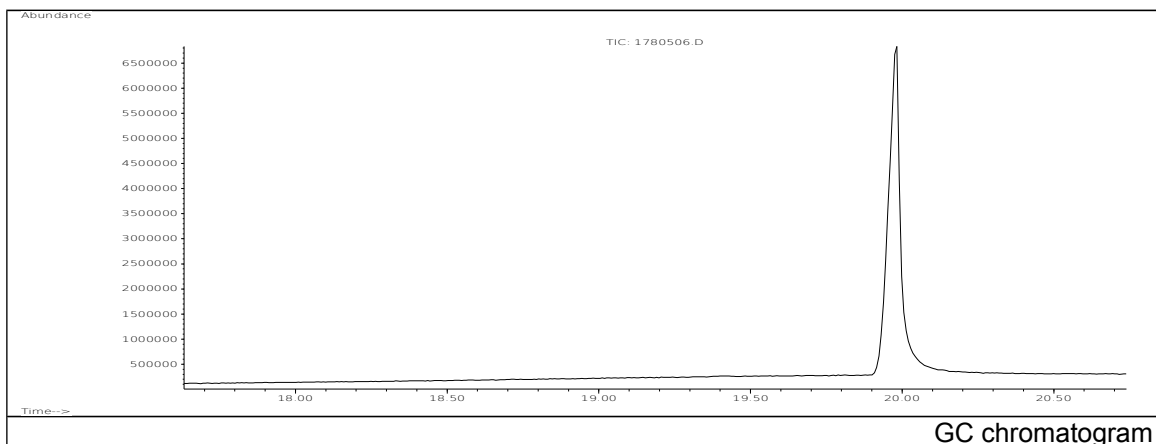


JRC CRL - FCM Database / GC-MS

Sample Name: 2,5-Bis(5-tert-butyl-2-benzoxazolyl) thiophene
Solvent: Toluene
Concentration: 100 µg/mL

Date: 08/08/2005
CAS: 007128-64-5
PM ref: 38560 [U.R.N. A061]



m/z	Abundance	Ion Intensity %	m/z	Abundance	Ion Intensity %
77.10	137408,0	10,78	387.20	105296,0	8,26
79.10	82736,0	6,49	415.20	1274880,0	100,00
105.10	176576,0	13,85	416.20	393472,0	30,86
133.10	117752,0	9,24	417.20	123632,0	9,70
172.10	173312,0	13,59	430.30	1248256,0	97,91
186.10	104576,0	8,20	431.30	398912,0	31,29
200.10	253440,0	19,88	432.20	126096,0	9,89
267.10	103360,0	8,11			

Spectrometer: HEWLETT PACKARD GC/MS 6890/5973
Inlet system: capillary GC/MS
Scan Range: 40 - 700 amu
Source temperature: 230 °C

Flow: 1.2 mL/min
Column: DB 17-HT (30 m x 0.25 mm x 0.15 µm)
Programme temperature: 70 °C; 20 °C/min (250 °C);
10 °C/min (350 °C); 350 °C (20 min)