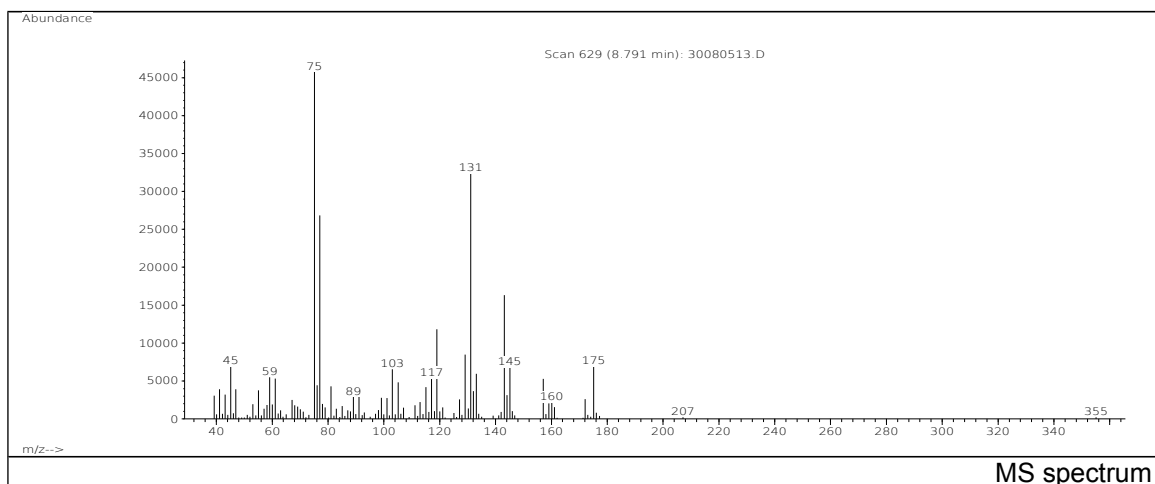
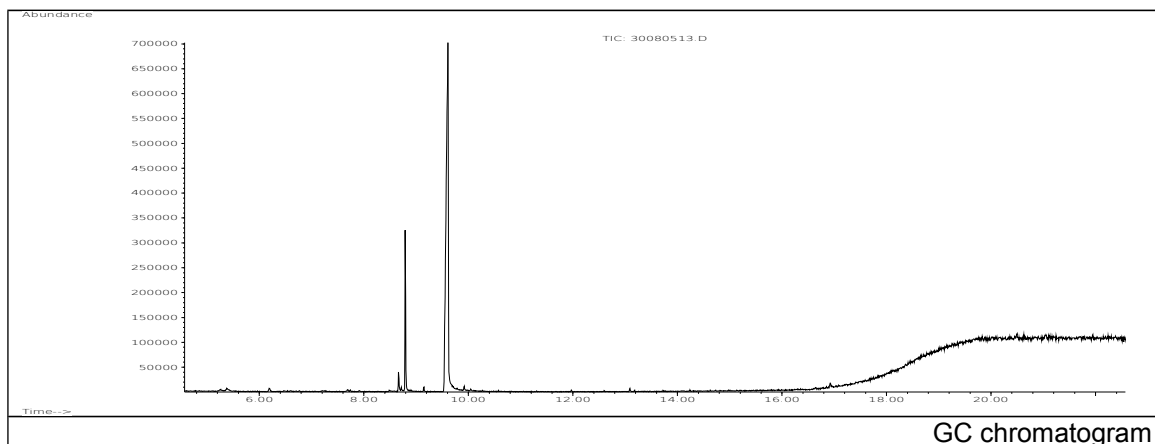


JRC CRL - FCM Database / GC-MS

Sample Name: 1,1,1-Trimethylolpropane
Solvent: Ethanol
Concentration: 100 µg/mL

Date: 30/08/2005
CAS: 000077-99-6
PM ref: 94960 [U.R.N. A060]

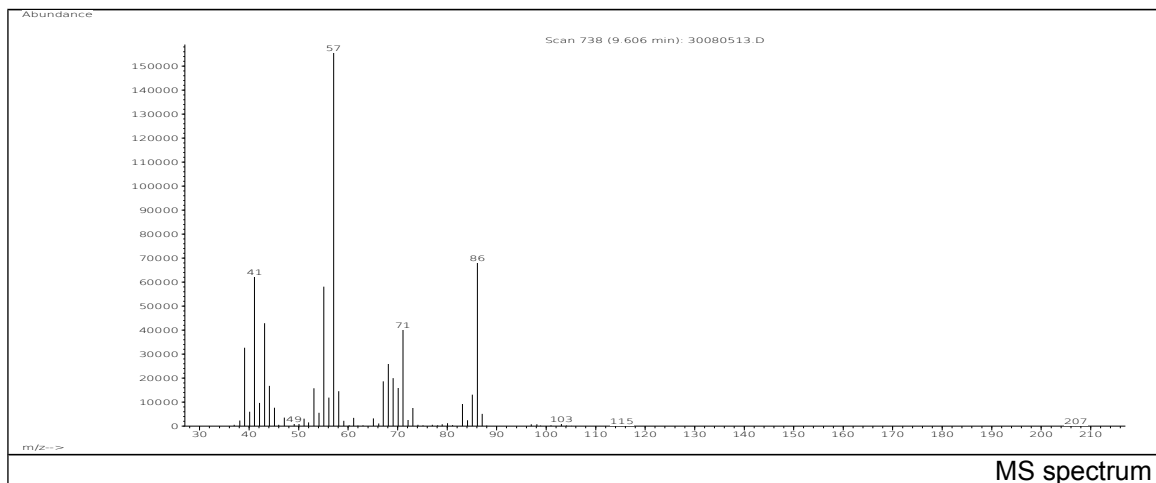


m/z	Abundance	Ion Intensity %	m/z	Abundance	Ion Intensity %
45.00	3900,0	14,85	129.00	5445,0	20,73
59.10	3514,0	13,38	131.10	19408,0	73,90
75.10	26264,0	100,00	133.10	3738,0	14,23
77.10	14629,0	55,70	143.10	10841,0	41,28
81.10	3023,0	11,51	145.10	4639,0	17,66
103.10	3632,0	13,83	157.10	3607,0	13,73
117.10	3241,0	12,34	175.10	4303,0	16,38
119.00	6961,0	26,50			

Spectrometer: HEWLETT PACKARD GC/MS 6890/5973
Inlet system: capillary GC/MS
Scan Range: 40-700 amu
Source temperature: 230 °C

Flow: 1.2 mL/min
Column: DB 17-HT (30 m x 0.25 mm x 0.15 µm)
Programme temperature: 40 °C (3 min); 20 °C/min
(350 °C); 350 °C (20 min)

JRC CRL - FCM Database / GC-MS



m/z	Abundance	Ion Intensity %	m/z	Abundance	Ion Intensity %
39.10	22920,0	19,90	58.10	11175,0	9,70
41.10	43608,0	37,85	67.10	12357,0	10,73
43.10	31576,0	27,41	68.10	18056,0	15,67
44.10	12421,0	10,78	69.10	13716,0	11,91
53.10	11032,0	9,58	70.10	11364,0	9,86
55.10	42088,0	36,53	71.10	27032,0	23,47
56.10	8609,0	7,47	86.10	49184,0	42,69
57.10	115200,0	100,00			

Spectrometer: HEWLETT PACKARD GC/MS 6890/5973
 Inlet system: capillary GC/MS
 Scan Range: 40-700 amu
 Source temperature: 230 °C

Flow: 1.2 mL/min
 Column: DB 17-HT (30 m x 0.25 mm x 0.15 µm)
 Programme temperature: 40 °C (3 min); 20 °C/min
 (350 °C); 350 °C (20 min)