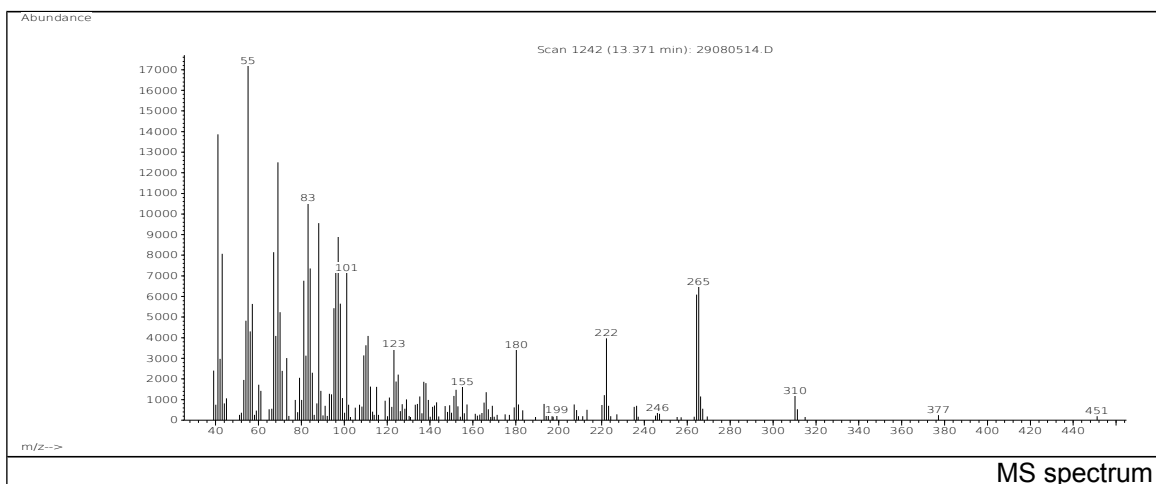
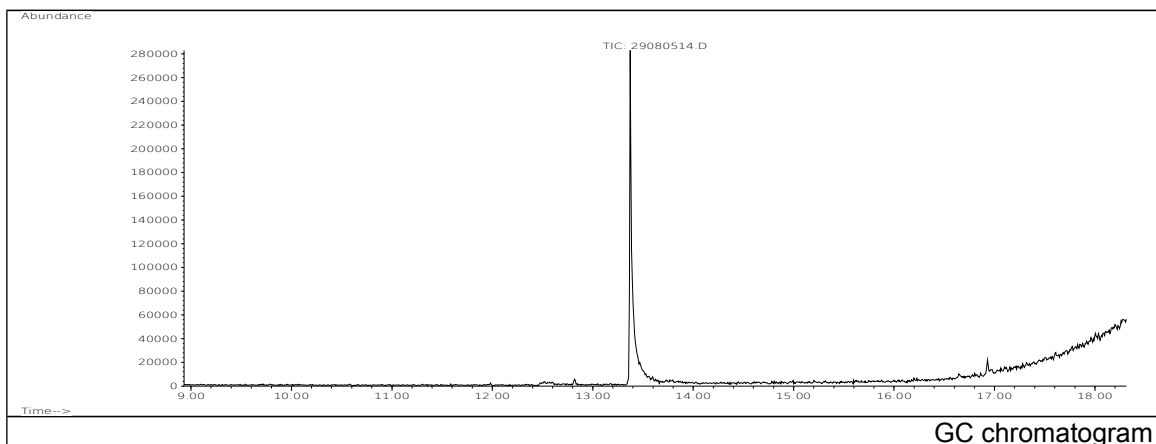


JRC CRL - FCM Database / GC-MS

Sample Name: Sorbitan monooleate
Solvent: Ethanol
Concentration: 100 µg/mL

Date: 29/08/2005
CAS: 001338-43-8
PM ref: 87680 [U.R.N. A048]



m/z	Abundance	Ion Intensity %	m/z	Abundance	Ion Intensity %
41.10	8779,0	72,76	84.10	5514,0	45,70
43.10	6097,0	50,53	88.10	7281,0	60,35
55.10	12065,0	100,00	96.10	5020,0	41,61
67.10	5327,0	44,15	97.10	6071,0	50,32
69.10	8604,0	71,31	101.10	5093,0	42,21
70.10	4339,0	35,96	264.30	5961,0	49,41
81.10	4869,0	40,36	265.30	6122,0	50,74
83.10	6409,0	53,12			

Spectrometer: HEWLETT PACKARD GC/MS 6890/5973
Inlet system: capillary GC/MS
Scan Range: 40-700 amu
Source temperature: 230 °C

Flow: 1.2 mL/min
Column: DB 17-HT (30 m x 0.25 mm x 0.15 µm)
Programme temperature: 40 °C (3 min); 20 °C/min
(350 °C); 350 °C (20 min)