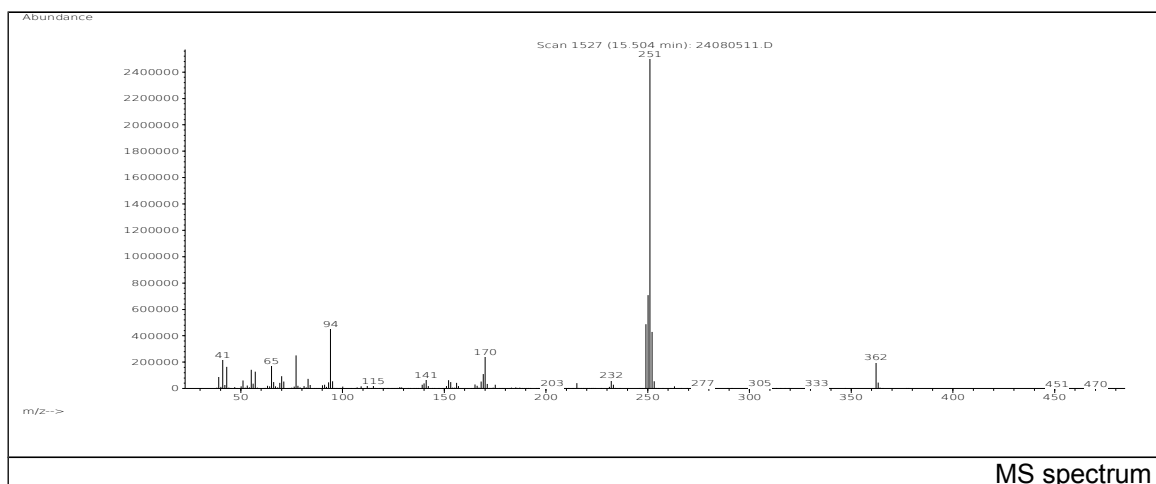
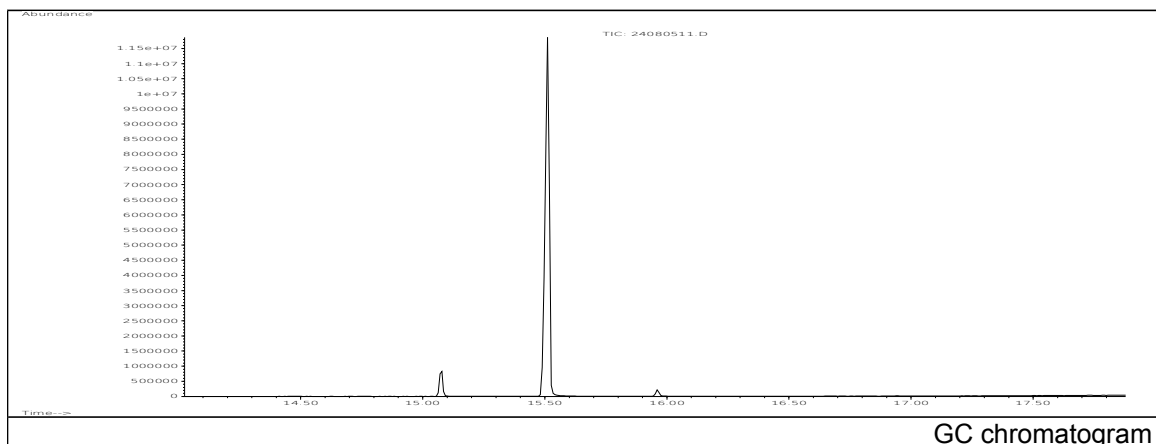


JRC CRL - FCM Database / GC-MS

Sample Name: Phosphoric acid, diphenyl 2-ethylhexyl ester
Solvent: Ethanol
Concentration: 100 µg/mL

Date: 24/08/2005
CAS: 001241-94-7
PM ref: 72800 [U.R.N. A022]



m/z	Abundance	Ion Intensity %	m/z	Abundance	Ion Intensity %
41.10	218624,0	8,51	169.10	110520,0	4,30
43.10	164096,0	6,38	170.10	238208,0	9,27
55.10	141824,0	5,52	249.10	486976,0	18,95
57.10	128672,0	5,01	250.10	707392,0	27,52
65.10	174400,0	6,79	251.10	2570240,0	100,00
70.10	92576,0	3,60	252.10	428352,0	16,67
77.10	250752,0	9,76	362.20	200064,0	7,78
94.10	450624,0	17,53			

Spectrometer: HEWLETT PACKARD GC/MS 6890/5973
Inlet system: capillary GC/MS
Scan Range: 40-700 amu
Source temperature: 230 °C

Flow: 1.2 mL/min
Column: DB 17-HT (30 m x 0.25 mm x 0.15 µm)
Programme temperature: 40 °C (3 min); 20 °C/min
(350 °C); 350 °C (20 min)