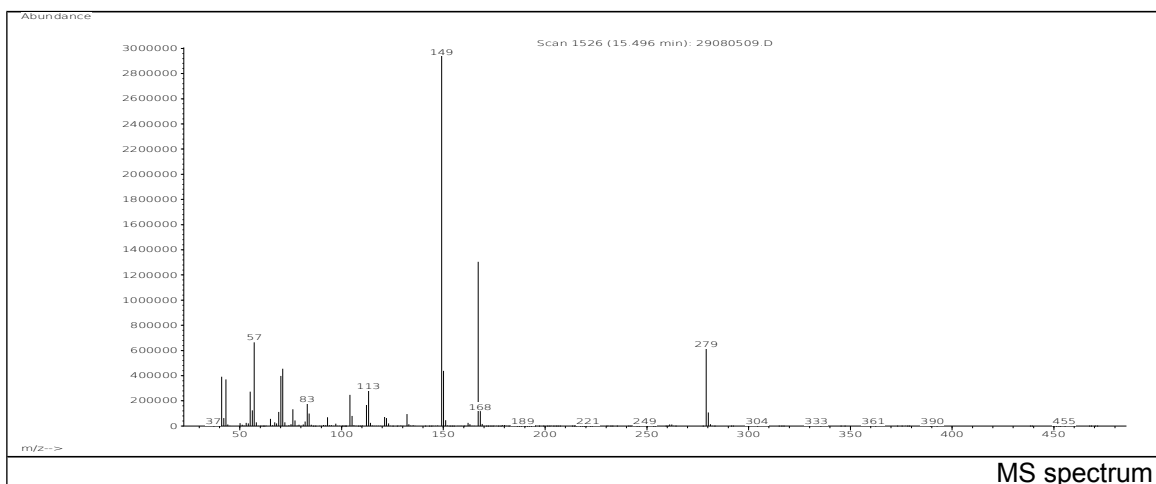
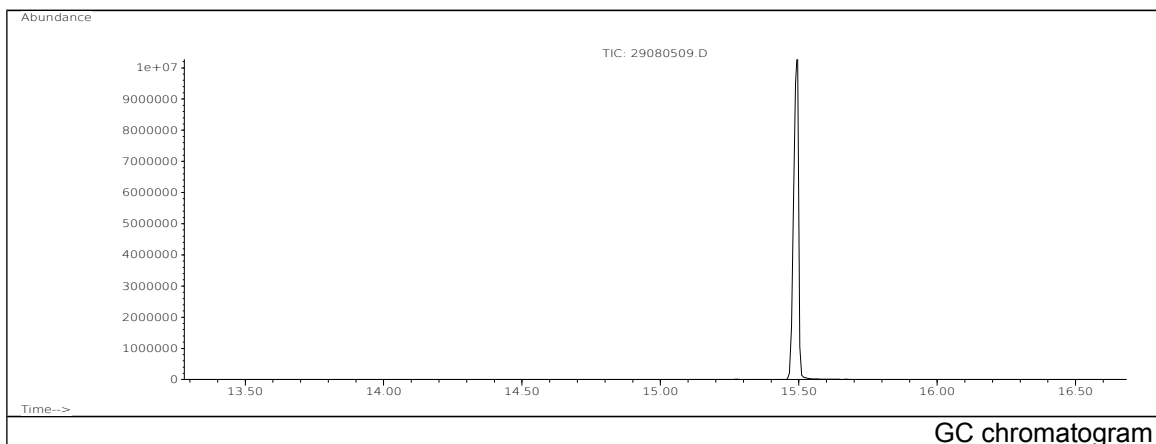


JRC CRL - FCM Database / GC-MS

Sample Name: Phthalic acid, bis(2-ethylhexyl)ester
Solvent: Hexane
Concentration: 100 µg/mL

Date: 29/08/2005
CAS: 000117-81-7
PM ref: 74640 [U.R.N. A020]



m/z	Abundance	Ion Intensity %	m/z	Abundance	Ion Intensity %
41.10	377216,0	14,17	104.10	220544,0	8,28
43.10	364416,0	13,69	112.20	139200,0	5,23
55.10	266624,0	10,01	113.20	242368,0	9,10
57.10	636288,0	23,90	149.10	2662400,0	100,00
70.10	368768,0	13,85	150.10	369600,0	13,88
71.10	420672,0	15,80	167.10	1045760,0	39,28
76.10	126024,0	4,73	279.20	448704,0	16,85
83.10	160192,0	6,02			

Spectrometer: HEWLETT PACKARD GC/MS 6890/5973
Inlet system: capillary GC/MS
Scan Range: 40-700 amu
Source temperature: 230 °C

Flow: 1.2 mL/min
Column: DB 17-HT (30 m x 0.25 mm x 0.15 µm)
Programme temperature: 40 °C (3 min); 20 °C/min
(350 °C); 350 °C (20 min)