



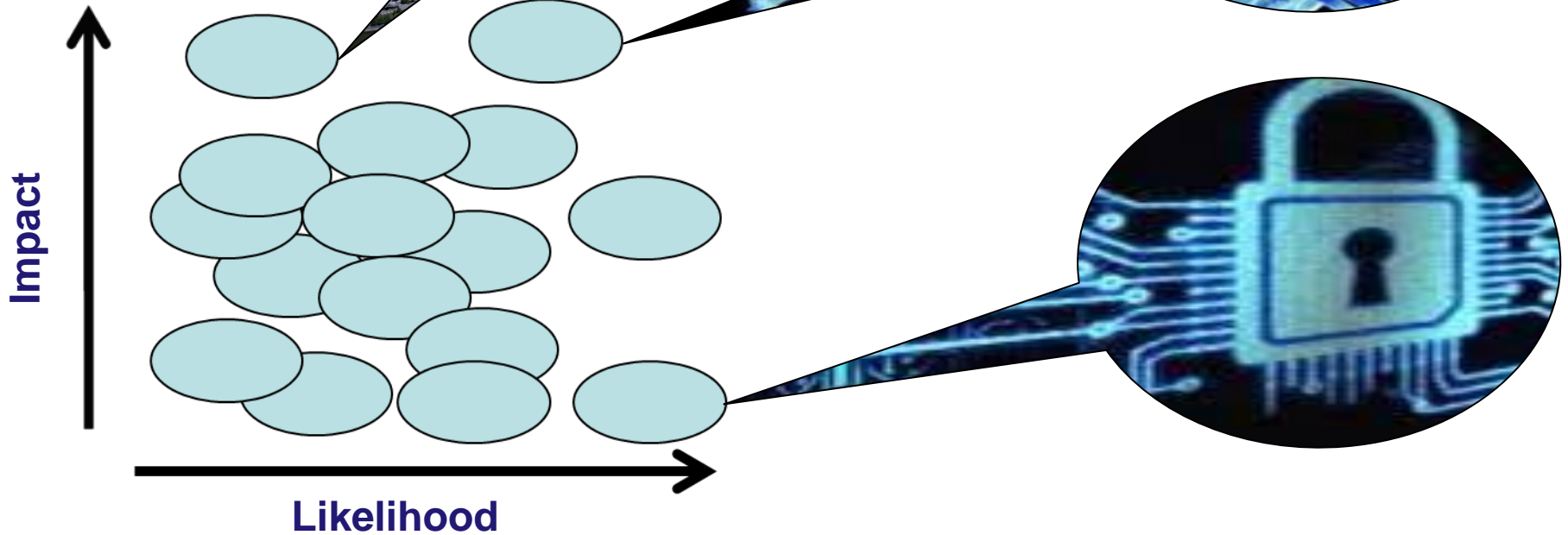
Government
Office for Science

Dr Claire Craig
Director, UK Government Office for Science



What risks do you face?

National risk assessment





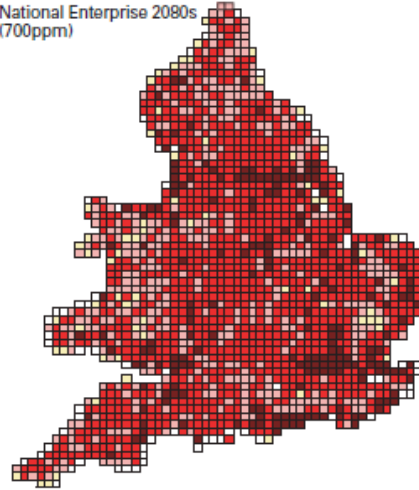
How might risk evolve over time?

Flood risk 2080s

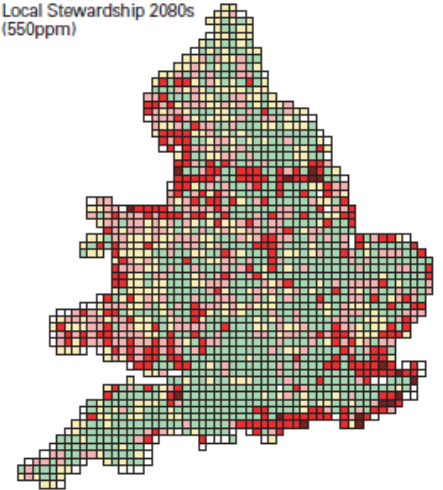


Taihu basin, China

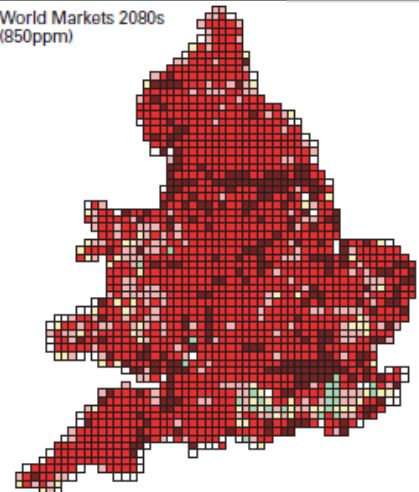
National Enterprise 2080s
(700ppm)



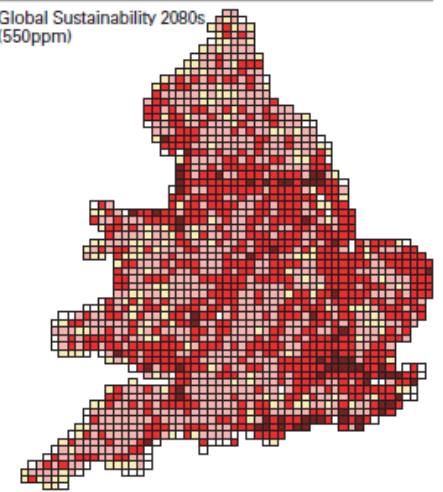
Local Stewardship 2080s
(550ppm)



World Markets 2080s
(850ppm)



Global Sustainability 2080s
(550ppm)





Government
Office for Science

Should you plan for the event or common consequences?



Shelter

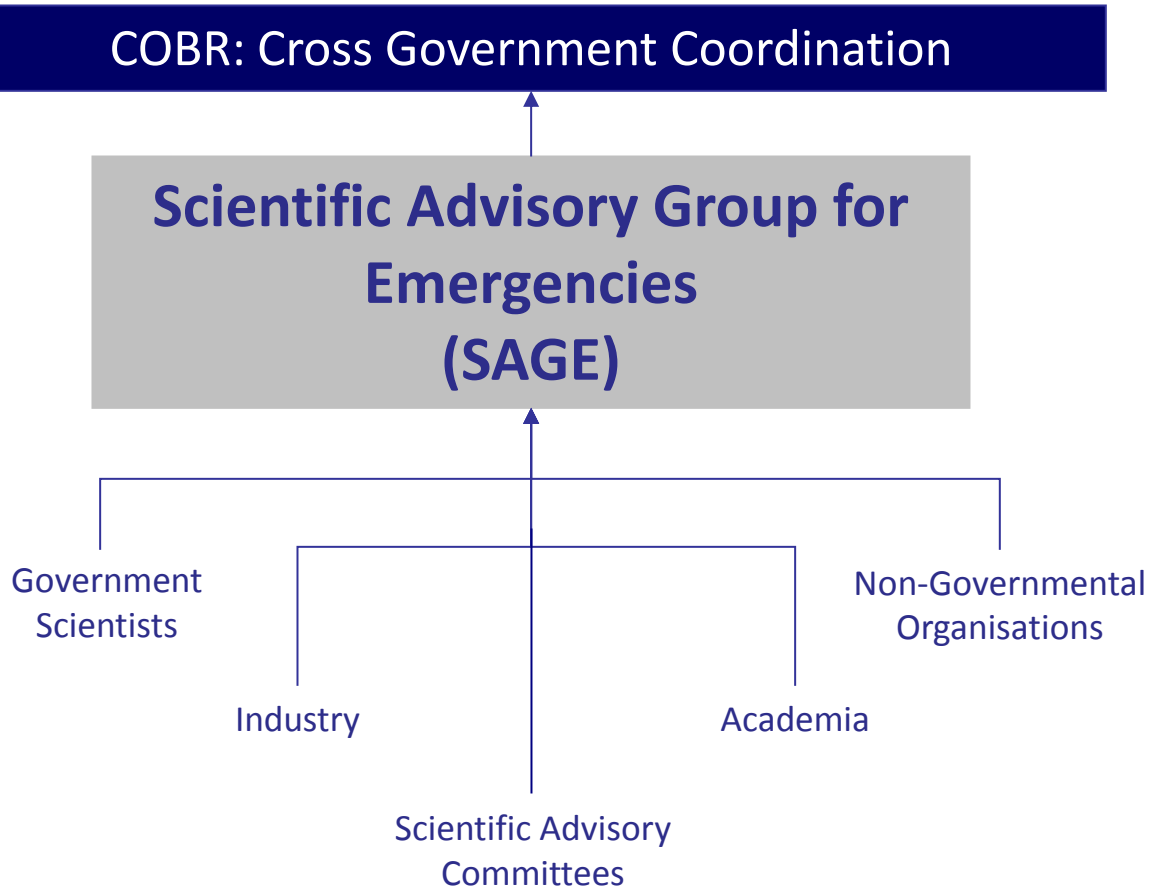
Clean up



**Disruption to
travel**



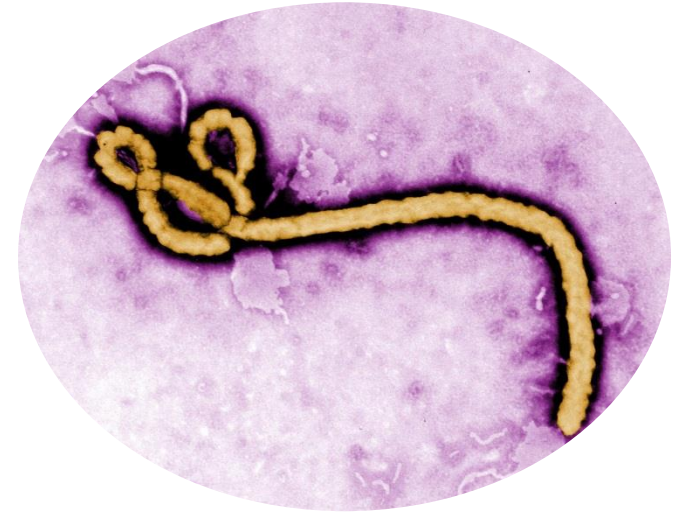
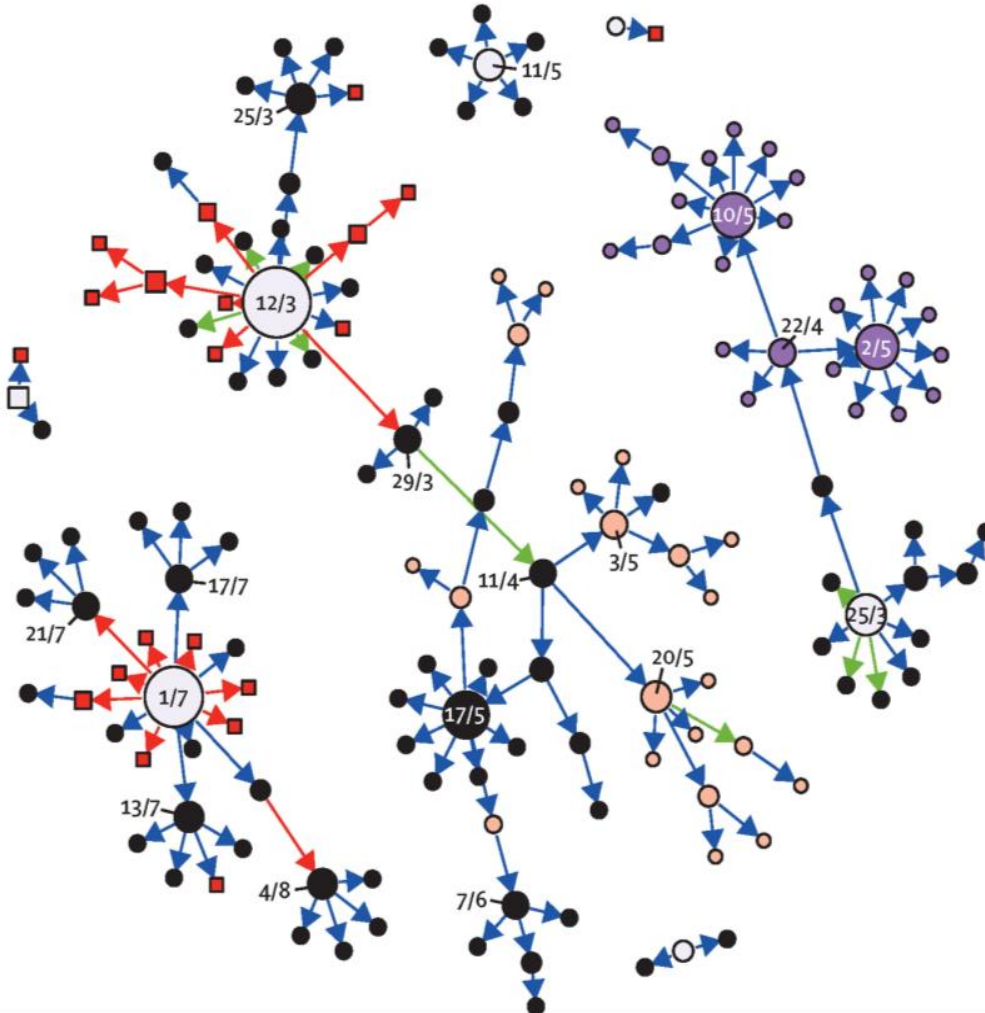
How do you get the best advice when responding to an event?



- 2009: Pandemic Flu
- 2010: Volcanic Ash
- 2011: Fukushima
- 2012: London Olympics
- 2013: UK Flooding
- 2014: Ebola Outbreak
- 2015: Nepal Earthquake



What are some of the challenges?



Ebola virus

Ebola transmission pathway



Government
Office for Science

How do we better link global and local knowledge?



Observations



Global modelling



Source: Esoko

Local knowledge



Government
Office for Science

@uksciencechief

www.gov.uk/go-science

Every effort has been made to trace copyright holders and to obtain their permission for the use of copyright material. We apologise for any errors or omissions in the included attributions and would be grateful if notified of any corrections that should be incorporated in future versions of this slide set. We can be contacted through enquiries@bis.gsi.gov.uk.