

ELISE state of play

European

Location

Interoperability

Solutions for

E-Government

ISA² Coordination Group

13th October 2017

Brussels

Tallinn Digital Summit: creating a EU digital continent by 2025

Ministers from 32 countries of EU and EFTA have unanimously signed on the 6 October 2017 the Tallinn declaration confirming the commitment to the vision laid out in the EU eGovernment Action Plan 2016-2020 and in the European Interoperability Framework (EIF).

In the **next 5 years** (2018-2022) steps will be taken towards the **declared principles** in EU Public Administrations:

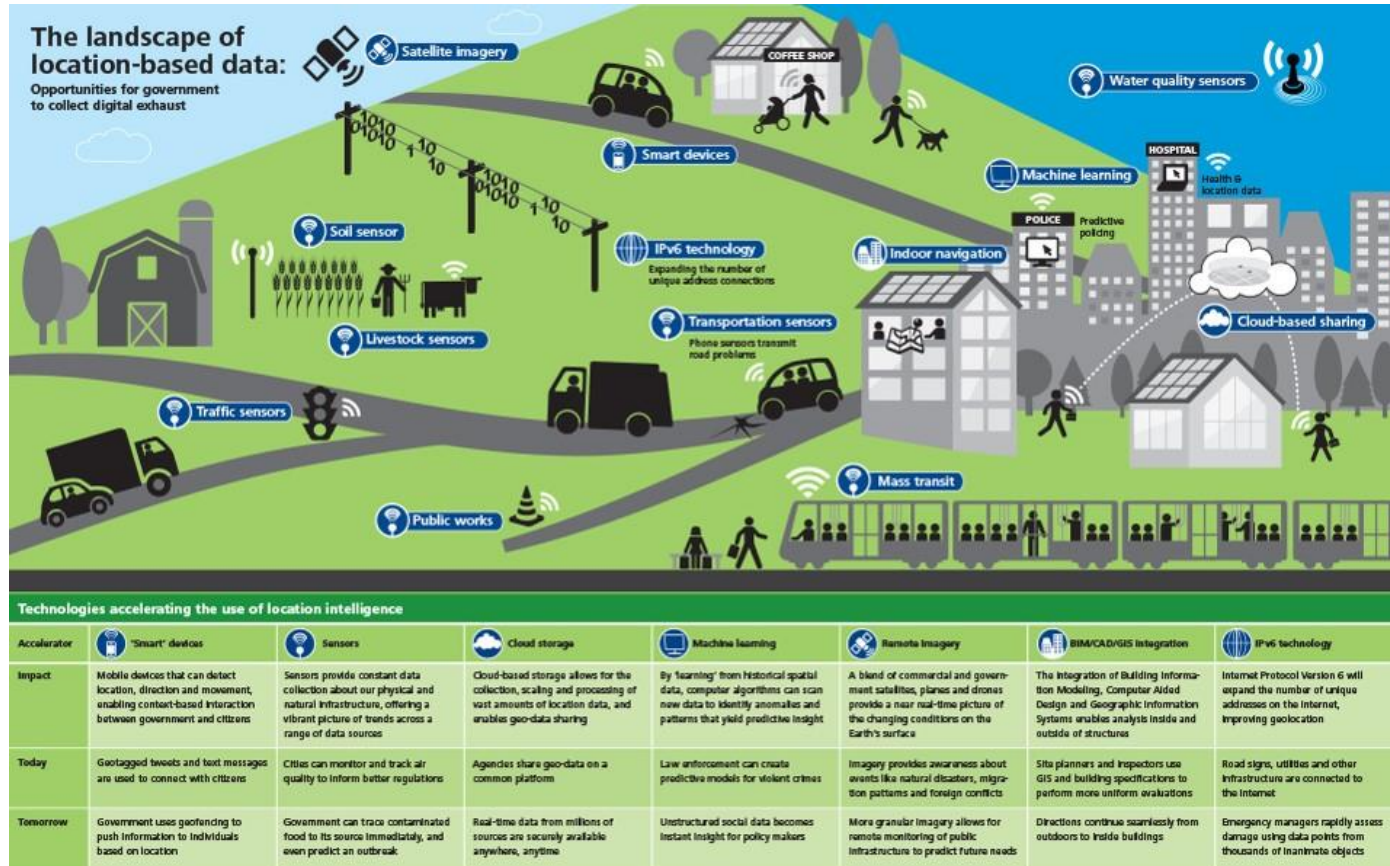
- “**digital-by-default**”
- “**inclusiveness and accessibility**”
- “**once only**”
- “**trustworthiness and security**”
- “**openness and transparency**”
- “**interoperability by default**”





European Commission

Geospatial technologies fuel the Digital Economy

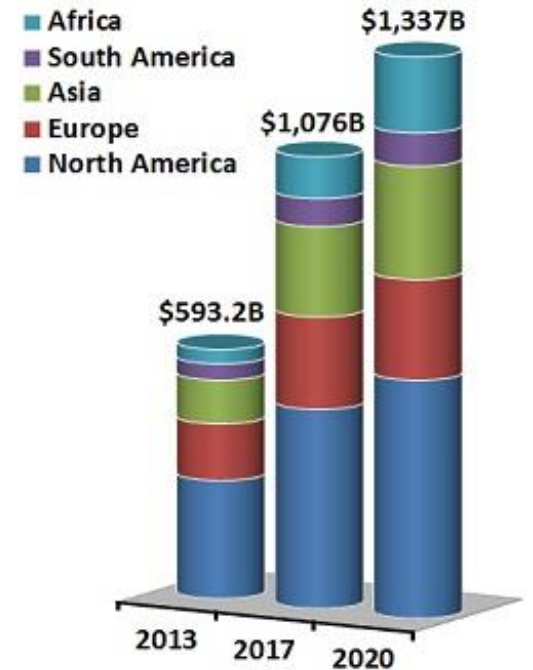


Graphic: Deloitte University Press | DUPress.com

<http://government-2020.dupress.com/driver/geospatial-technology//>

Geospatial technologies fuel the Digital Economy

- In **2020**, the **location-based service** market will be a **US\$1.3 trillion** industry⁽¹⁾
- In **2020**, use of **geo-location data**, including GPS, will generate **US\$500 billion** in consumer value⁽²⁾
- Geographer **jobs will grow** by 35% per annum, while those of cartographers and photogrammetrists will grow by 22% **between 2010 and 2020**⁽³⁾



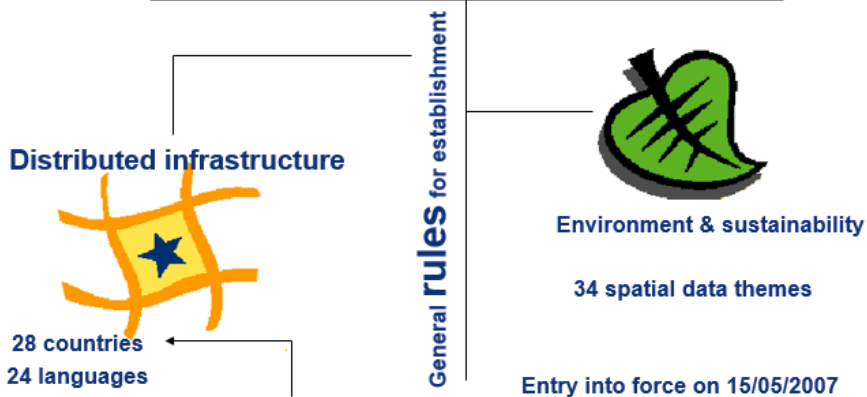
**Location-based services
market forecast – 2013-2020**

1. "Location Based Services – Market and Technology Outlook – 2013-2020," Market Info Group LLC, <http://www.marketinfogroup.com/location-based-services-market-technology/>
2. "Implications of the ICT Skills Gap for the Mobile Industry," MacLeod Consulting, <http://www.gsma.com/events/wp-content/uploads/2013/08/ICT-Skills-Gap-Research.pdf>
3. "\$3.7 Billion Reasons Why GIS Technology is The Future," American Sentinel University, <http://www.americansentinel.edu/about-american-sentinel-university/newsroom/3-7-billion-reasons-why-gis-technology-is-the-future>
- 4

INSPIRE, Europe's "lingua franca" for anything geospatial

Directive 2007/2/EC of the European Parliament and of the Council of 14 March 2007 establishing an Infrastructure for Spatial Information in the European Community (INSPIRE)

Institutional framework	Technical standards
Fundamental data sets	Data Services



Set of European legal acts and their coordinated implementation

Directive 2013/37/EU of 26 June 2013 amending Directive 2003/98/EC on the **re-use of Public Sector Information (PSI)**
Directive 2003/98/EC

Communication from the Commission to the European Parliament, the Council, the European Economic and Social Committee, and the Committee of the Regions: **A Digital Agenda for Europe** - COM(2010) 245 final/2

Digital Single Market

Communication from the Commission to the European Parliament, the Council, the European Economic and Social Committee, and the Committee of the Regions: **EU eGovernment Action Plan 2016-2020** COM(2016) 179 final

The New **European Interoperability Framework** COM(2017) 134

EU implementation of the

G8 Open DataCharter

EU Open Data Strategy

Tallinn Declaration on **eGovernment**

ELISE: ongoing and future activities

Barriers and opportunities of location information

Re3gistry

INSPIRE in Practice

Role of location data in digital platforms
 Geodata and Statistics
 Support to Multimodal Travel Information Services

Assessing barriers and enablers to interoperability

Feasibility studies
 Assessment studies

Studies

Implementing and enabling interoperability

Recommendations
 Tools and Guidance
 Common services

Frameworks and Solutions

Spatial Data on the Web
 EU Gazetteer study
 Location Interoperability guidance and blueprint
 Solution patterns inventory

Digital Transformation of government

INSPIRE Test framework



ELISE Network of national experts
 Location interoperability Observatory
 Location-related ICT assessments of new policy
 Stakeholder engagement

Landscape Analysis
 Capacity Building
 Stakeholder Support

Helping implement interoperability

Pilot projects
 Partnerships and Collaborations

Showing the benefits of interoperability

Energy Efficiency of Buildings
 ITS Road Transport Data exchange

Awareness raising publications / events

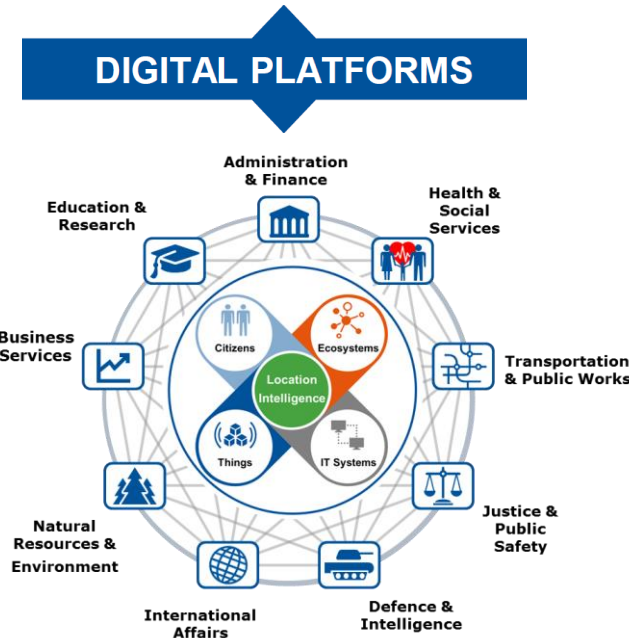
Training

ELISE is active in supporting several EU policy initiatives

- **European Interoperability Framework – Implementation Strategy (Interoperability Action Plan) SWD (2017) 112 final**
 - **Action 4:** *Expand and maintain the NIF Observatory to monitor implementation of the EIF and compliance of national interoperability strategies/frameworks with the EIF. Also, monitor and assess interoperability action plan's implementation.*
 - **Action 6:** *Clarify and propose ways to formalise public administrations' organisational relationships as part of the establishment of European public services. Identify and develop common process models to describe business processes. Identify best practices.*
 - **Action 17:** *Further support the implementation and enhancement of the INSPIRE Directive through the use of geospatial data in digital public services.*
 - **Action 19:** *Develop a method to assess the possible ICT impact of legislation at EU or, if possible, national levels; identify legislation that hampers interoperability (including legal screening); perform digital checks on proposed or existing policies and legislation; support actions facilitating the preparation and coherence of legislation.*
- The **review of PSI Directive (2013/37/EU)** - spring 2018
- **INSPIRE Directive (2007/2/EC)** implementation (deadlines:11/17, 02/18, 10/20, 12/21)
- **EU eGovernment action plan 2016-2020 COM(2016) 179 final**
 - **Action 19:** *Accelerate the deployment and take-up of the INSPIRE Directive data infrastructure*

ELISE and the Digital Economy

- The **Digital Single Market** aims at creating **economic growth** and ensuring Europe remains competitive on a global level in the **digital and data economy**
- The evolution of **Digital Platforms** (public and private) is expected to greatly impact data and knowledge intensive markets (financial services, governments, transportation, etc.)
- **Location-enabled services** as well **location data** play an essential in almost all of these **Digital Platforms** and the importance of **location intelligence** is increasing thanks to the more than **30 billion** location aware **devices** that will be connected to the "**Internet of Things**" by 2020
- Europe should **understand how** location-enabled digital **platforms** might **impact** the European **digital and data economy** in large-scale public and private sector and across **different industries**, i.e. Automotive, Maritime, Aviation, Rail, Space, Environment etc.



Study approach

European data-driven Economy

This study should be seen in the context of the creation of a **European data-driven economy**, which is essential to ensuring a functional **digital single market**.

Commission Communication

Building on this, the European Commission adopted a Communication on **"Building a European Data Economy"**, in January 2017, aimed at ensuring improved data flows across borders and sectors.

Relevance to the geospatial domain

The Commission Communication outlines emerging **issues relevant to the geospatial domain** such as the **availability, access and interoperability** of data sets, which are necessary for the development of geospatial data-based services and products useful to actors involved in the "geospatial value chain".

Analyse

Five different case studies exhibiting the use of geospatial data for creation of products and services

Assess

The value created from the use of geospatial data and identify existing barriers to its wider reuse as well as the associated opportunities

Propose

Policy recommendations to help eliminate existing barriers to the use of geospatial data and to realise the identified opportunities



Five Case Studies

1. PDOK (NL)
2. The Foodie Project (DE, CZ, PL, LV, ES)
3. Smart Open Data Portugal Spain Pilot (ES, PT)
4. Innovate UK (UK)
5. Danish Basic Data programme (DK)



Stakeholder Interviews

- ✓ Interviews were held with identified stakeholders within each case study.
- ✓ Stakeholders included: public administrations, national agencies, research bodies, private companies (including SMEs).



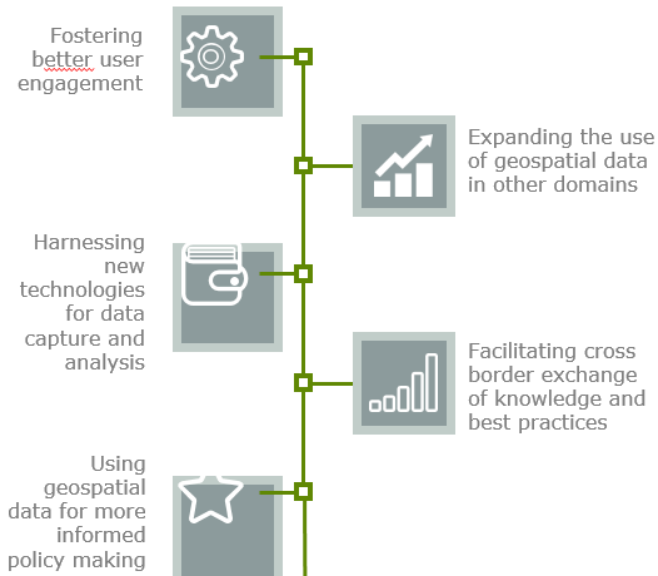
Data Analysis

- ✓ Collected data was complemented by desk research;
- ✓ The data analysis was done along the main research questions of the study.

Value Created
Identified barriers
Future Opportunities

Preliminary findings

Future Opportunities



Value Created



Identified barriers



ELISE: Ongoing and future activities

Barriers and opportunities of location information

Re3gistry

INSPIRE in Practice

Role of location data in digital platforms
Geodata and Statistics
Support to Multimodal Travel Information Services

Assessing barriers and enablers to interoperability

Feasibility studies
Assessment studies

Studies

Implementing and enabling interoperability

Recommendations
Tools and Guidance
Common services

Frameworks and Solutions

Spatial Data on the Web
EU Gazetteer study
Location Interoperability guidance and blueprint
Solution patterns inventory

Digital Transformation of government

INSPIRE Test framework

GEOSPATIAL INTEROPERABILITY

Geo Knowledge Base Service

Applications

ELISE Network of national experts
Location interoperability Observatory
Location-related ICT assessments of new policy

Landscape Analysis

Geo Knowledge Base Service

Pilot projects

Energy Efficiency of Buildings

Pilots in Transport, Energy and Marine domains

Stakeholder Support

Partnership and Collaborations

Cloud-based data exchange

Stakeholder engagement

Helping implement interoperability

Showing the benefits of interoperability

Awareness raising publications / events

Training

Pilots for Business opportunities Transportation Pilot

Commercial map providers like **HERE** and **TomTom** need **road network data** that are

- consistent
- accurate
- up-to-date

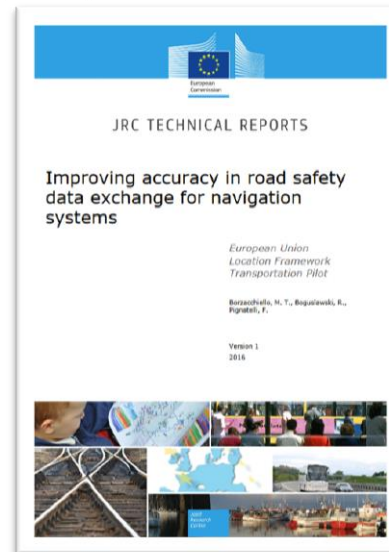
In the **Transportation Pilot**, **INSPIRE** standards are used to get **geospatial data from public administrations**

Significant **reduced error rates in maps of from 25% to 7%**, and Road Authorities (SE, NO) upgraded **from quarterly to daily updates** to map providers

Commercial map providers able to move **from disparate national processes to more standardised processes** in EU countries

Pilot now being **rolled out across Europe** under CEF – Transport (**14 countries**)

Next step to open solutions to **ALL industry players**



Up-to-date flow of road safety data between National Road Authorities and private map providers

<http://publications.jrc.ec.europa.eu/repository/handle/JRC104569>

Published in December 2016



<https://www.youtube.com/watch?v=jnny5ATwTYE>

<https://joinup.ec.europa.eu/page/eulf-transportation-pilot>



European Commission

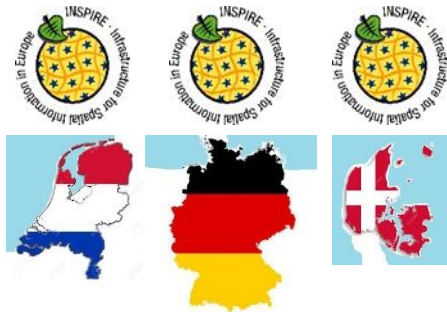
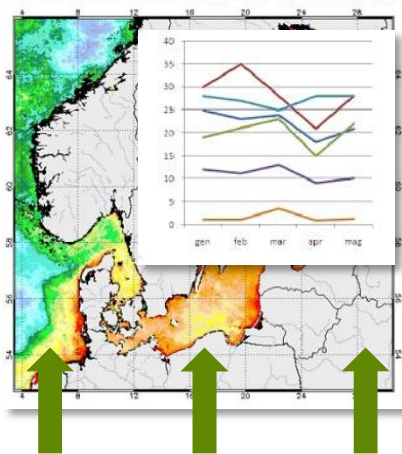
Pilots for Better Regulation

Marine Pilot

Monitoring marine environment is needed for **multiple EU & international laws**

Data can be re-used easier in cross-border applications if:

- harmonised
- up to date
- exposed via services

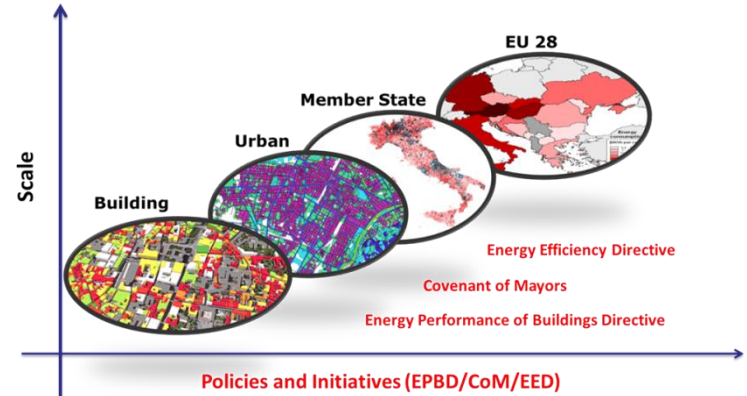


The **Marine Pilot** implements INSPIRE standards to support **marine data re-use**

<https://www.youtube.com/watch?v=ROJqljr8aDU&feature=youtu.be>

https://joinup.ec.europa.eu/community/eulf/og_page/eulf-marine-pilot

Energy Pilot



Energy efficiency policy landscape includes **several Directives requiring data with different scales and accuracy**

Location data can help **scale-up methodologies** from building to local to regional to national level

INSPIRE can **facilitate** the collection, harmonization, elaboration, access to and sharing of reliable data

https://joinup.ec.europa.eu/community/eulf/og_page/eulf-energy-pilot

Focus on Buildings (EPBD)

According to studies conducted by BPIE (Buildings Performance Institute Europe):

- Buildings are responsible for the 40% of final energy consumption
- Over 75% of building stock is older than 25 years
- Averaged final energy consumption data: 185 kWh/m² for residential buildings and 280 kWh/m² for non-residential buildings
- Deep renovation of buildings could cut 36% of their energy consumption by 2030

Pilot will be tested by means of Use Cases with various actors: public authorities at regional and local level, businesses working in the energy sector, citizens

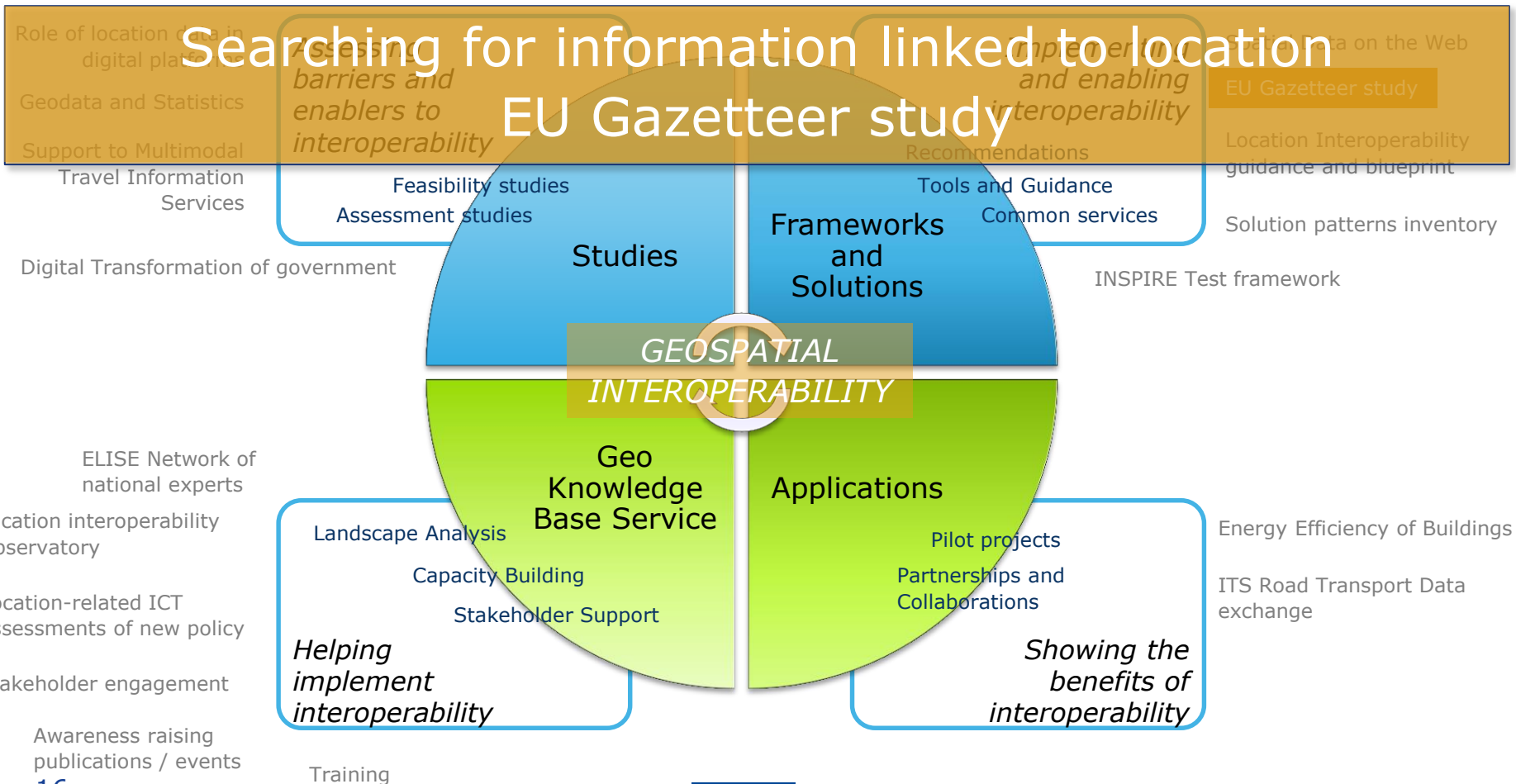


ELISE: ongoing and future activities

Barriers and opportunities of location information

Re3gistry

INSPIRE in Practice



What is a gazetteer?

- A **place names dictionary**
- **Unambiguously** defines a geographic location
- Typical gazetteer service functions and data:

Locate

Disambiguate

Geocode

Reverse Geocode

Lookup

Link



Rationale for an EU-Gazetteer

- Increasing number of neighbouring and pan-European data initiatives:
 - Provide growing data resources, often under open licences
 - **Need an integrated EU-gazetteer** to support their processes
 - Often elect to develop their own custom gazetteer...
- There is not yet a gazetteer for the whole of Europe that is:

European Data portal

INSPIRE

Copernicus

DRDSI

Interreg

Official

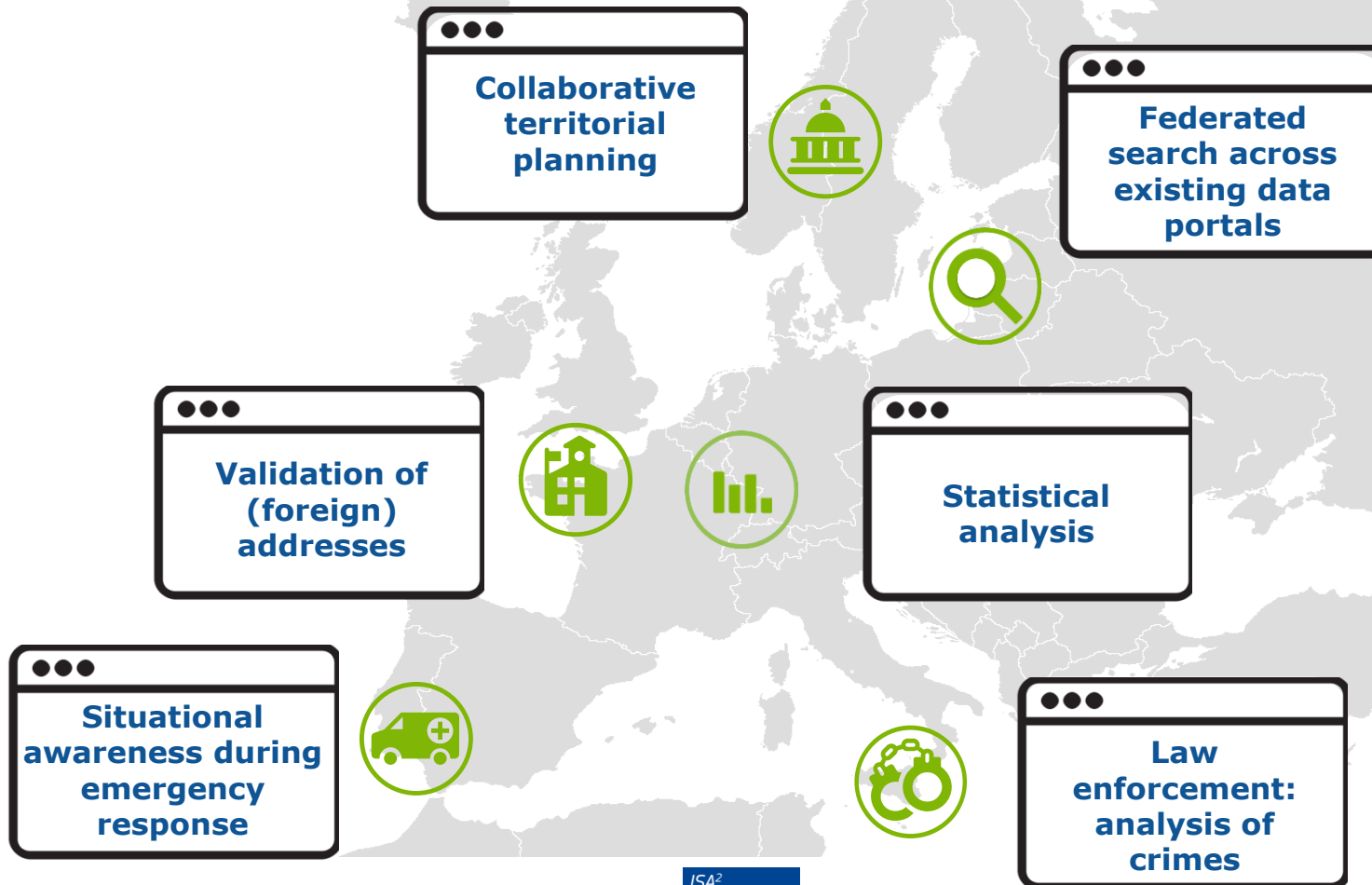
Open

Free



Would it not be better to create a common EU-Gazetteer?

Potential cross-border applications for an EU Gazetteer



The ELISE EU gazetteer project proposition*:

A pilot service potentially including geonames, admin units and addresses



Maximise the use of **authoritative GN and AU** data



Fill gaps with **best available non-authoritative data**



Attribution of data sources
(authoritative vs. non-authoritative)



Service available through an **API** to enable reuse



Open licence, free at point of use for all MS



Involvement of **multiple Member States**



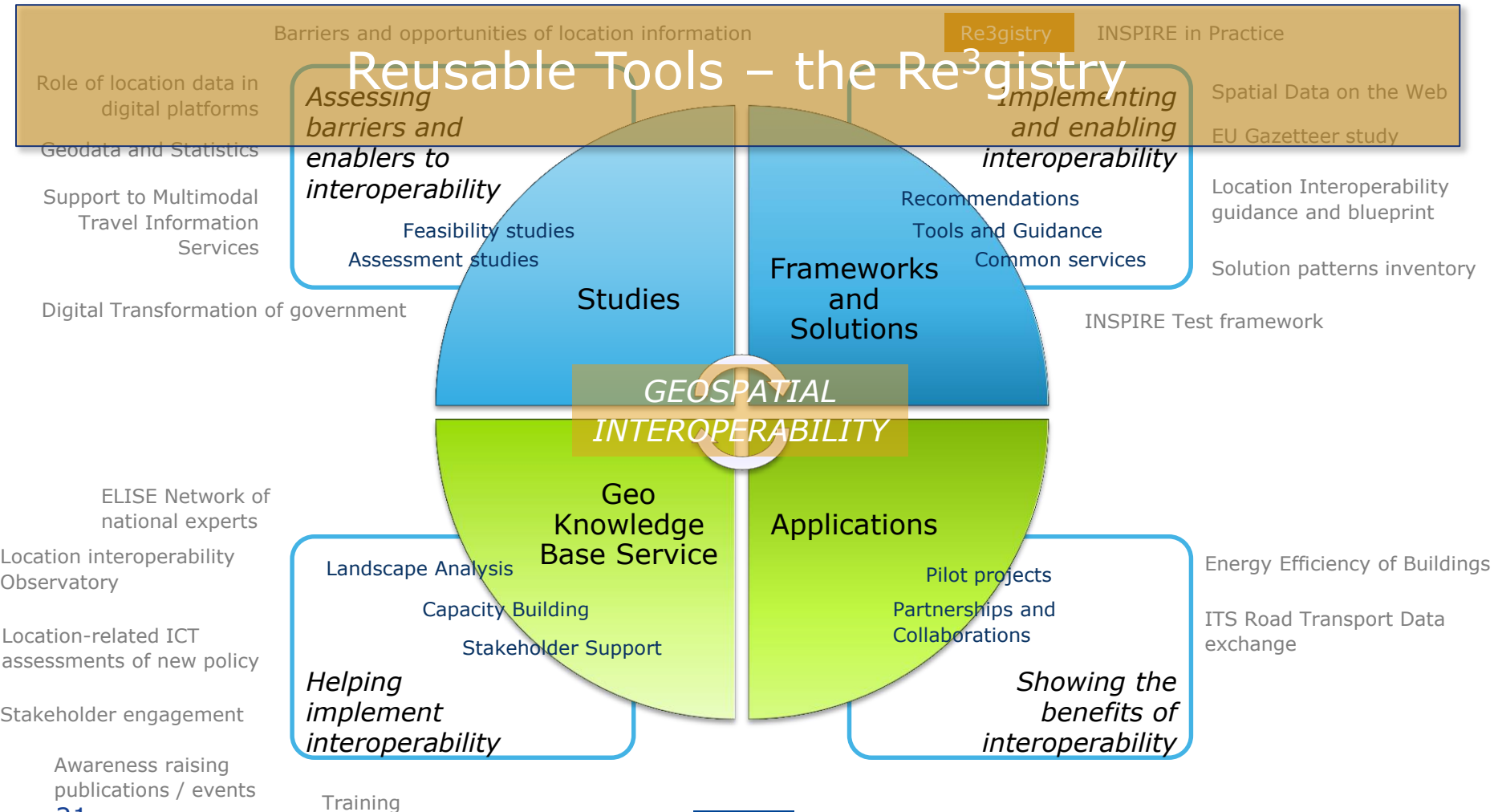
Supporting **priority applications**



Use **ISA²** to develop and evaluate a service that can be made operational, possibly using **CEF**

ELISE: ongoing and future activities

Reusable Tools – the Re³gistry



A reusable tool for sharing reference data to support semantic interoperability

Re³gistry

Reusable software powering:

- [The official pan-European **INSPIRE** Registry](#)
- [Slovakian registry](#)
- [Austrian \(CCCA\) registry](#)
- [FYROM registry](#)
- Italian (AgID) registry
- French registry
- Finnish registry

...including beyond **INSPIRE**:

- [GeoSmartCity registry](#)
- [SEMIC Core Vocabularies registry](#)
- [SEMIC EU Budget Vocabulary](#)
- [ELISE Energy Pilot registry](#)



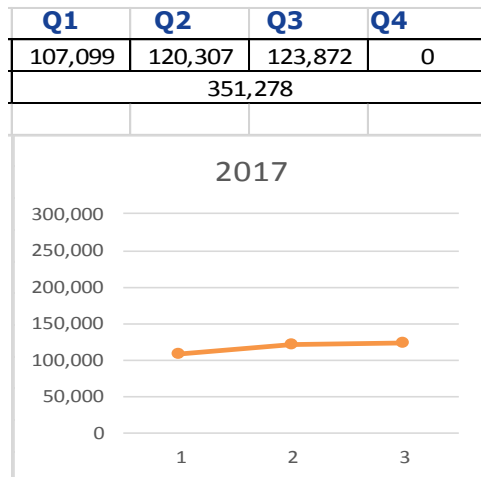
The screenshot shows the INSPIRE Registry website interface. At the top, there is a navigation bar with the European Commission logo and the text 'INSPIRE Registry'. Below this, there is a search bar and a list of registers. The main content area displays the details for the 'INSPIRE registry', including its ID, label, content summary, and registry manager. The content summary states: 'The INSPIRE infrastructure involves a number of items, which require clear descriptions and the possibility to be referenced through unique identifiers. Examples for such items include INSPIRE themes, code lists, application schemas or discovery services. Registers provide a means to assign identifiers to items and their labels, definitions and descriptions (in different languages). The INSPIRE registry provides a central access point to a number of centrally managed INSPIRE registers. The content of these registers are based on the INSPIRE Directive, Implementing Rules and Technical Guidelines.' Below the content summary, there are icons for various data formats: XML, XML (ISO 19135), RDF/XML, JSON, Atom, and CSV. At the bottom, there is a table of registers with a filter and label column.

Filter	Label
	INSPIRE application schema register
	INSPIRE code list register
	INSPIRE enumeration register
	INSPIRE feature concept dictionary
	INSPIRE glossary
	INSPIRE layer register
	INSPIRE media-types register
	INSPIRE metadata code list register
	INSPIRE reference document register
	INSPIRE theme register

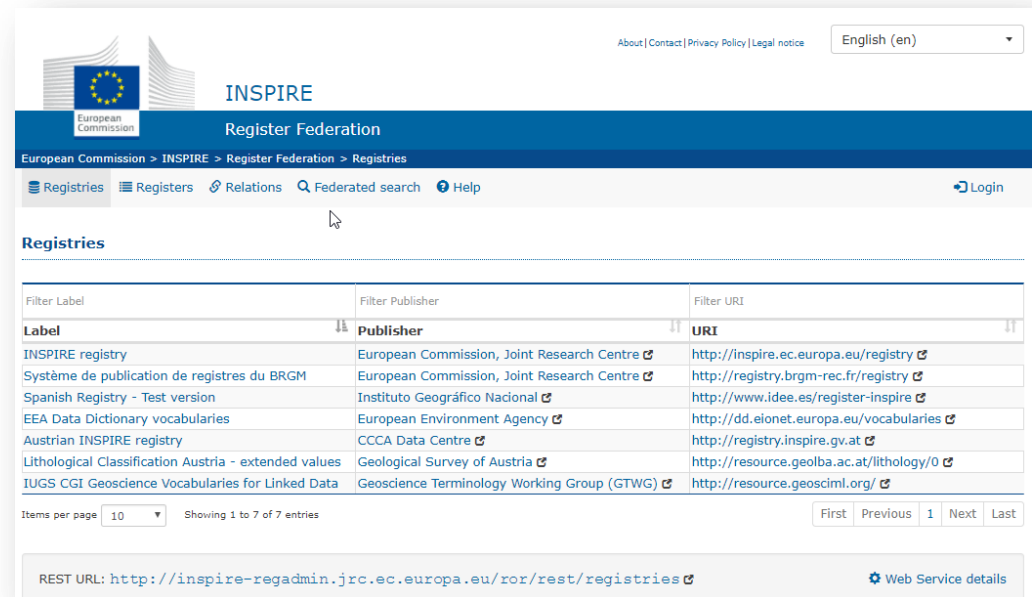
Re³gistry

2017 highlights

Increased usage of the service



Full testing of the *Registry of Registries*



INSPIRE Register Federation

European Commission > INSPIRE > Register Federation > Registries

Registries | Registers | Relations | Federated search | Help | Login

Filter Label	Filter Publisher	Filter URI
Label	Publisher	URI
INSPIRE registry	European Commission, Joint Research Centre	http://inspire.ec.europa.eu/registry
Système de publication de registres du BRGM	European Commission, Joint Research Centre	http://registry.brgm-rec.fr/registry
Spanish Registry - Test version	Instituto Geográfico Nacional	http://www.idee.es/register-inspire
EEA Data Dictionary vocabularies	European Environment Agency	http://dd.elonet.europa.eu/vocabularies
Austrian INSPIRE registry	CCCA Data Centre	http://registry.inspire.gv.at
Lithological Classification Austria - extended values	Geological Survey of Austria	http://resource.geolba.ac.at/lithology/0
IUGS CGI Geoscience Vocabularies for Linked Data	Geoscience Terminology Working Group (GTWG)	http://resource.geosciml.org/

Items per page: 10 | Showing 1 to 7 of 7 entries | First | Previous | 1 | Next | Last

REST URL: <http://inspire-regadmin.jrc.ec.europa.eu/ror/rest/registries> | Web Service details

Published technical guidance



“Technical Guidelines & Best Practices for INSPIRE registers and registries”

ELISE: ongoing and future activities

Barriers and opportunities of location information

Re3gistry

INSPIRE in Practice

Role of location data in digital platforms
 Geodata and Statistics
 Support to Multimodal Travel Information Services
 Digital Transformation of government

Assessing barriers and enablers to interoperability

Feasibility studies
 Assessment studies

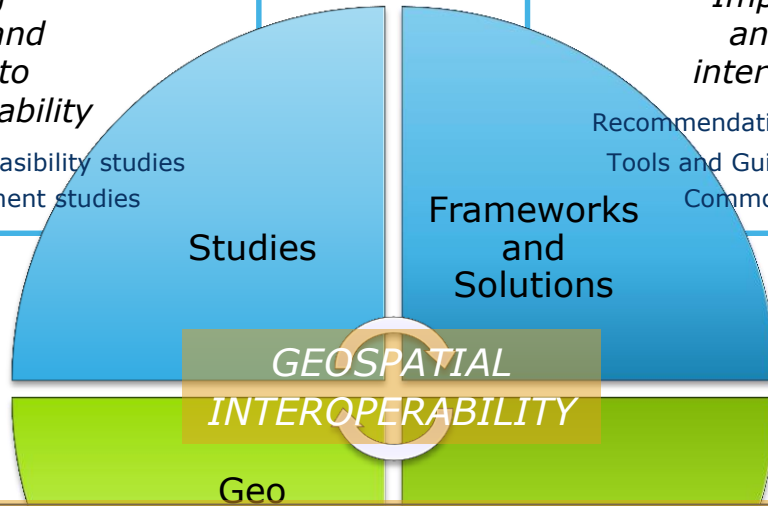
Studies

Implementing and enabling interoperability

Recommendations
 Tools and Guidance
 Common services

Frameworks and Solutions

Spatial Data on the Web
 EU Gazetteer study
 Location Interoperability guidance and blueprint
 Solution patterns inventory
 INSPIRE Test framework



Geo Knowledge Base Service and Stakeholder engagement

Helping implement interoperability

Landscape Analysis
 Geo Services
 Capacity Building
 Stakeholder Support

Showing the benefits of interoperability

Pilot projects
 Partnerships and Collaborations

Energy Efficiency of Buildings
 ITS Road Transport Data exchange

- ELISE Network of national experts
- Location interoperability Observatory
- Location-related ICT assessments of new policy
- Stakeholder engagement
- Awareness raising publications / events

Training

Geo Spatial Knowledge Base Service (KBS)

Support policy makers, application developers, business and citizens apply INSPIRE in other domains/initiatives beyond environment

Support DIGIT in their assessment of ICT implications of EU legislation where location information and associated processes are relevant

Share evidence, best practices and benchmark developments across Europe by operating an observatory, complementing NIFO, supported by a network of experts

Enable the EC and Member States to build capacity by transferring knowledge targeting public, administration, business and citizens

Expanding communication and engagement activities for awareness-raising and the uptake of results

ELISE links with other ISA² Actions



**National Interoperability
Framework Observatory
(NIFO)**

Location interoperability
observatory development in
coordination with NIFO



Core Location
Vocabulary –
GeoDCat - AP

ISA² Communications

Communication and
stakeholder
engagement support



SDI representation
according to EIRA –
Solution patterns



**ICT Implications of
EU Regulations**

Coordination with DIGIT to
include location information
and services



Reused in all the
ELISE survey

joinup

ELISE solutions and
community on joinup

ELISE



Stakeholders



Events organisation and participation



1° ISA² Geospatial Solutions WG
April 2017

Geosmartcity final conference, January 2017

FOSS4G Conference, July 2017

Webinars on Blueprint, EU Gazetteer, RDF
and INSPIRE validator



Sharing and Reuse Conference, March 2017



INSPIRE Conference, September 2017

New directions in Digital Government using INSPIRE ELISE Workshop, 4/9/2017



Transition from e-Government to **Digital Government** to be clarified

Raise awareness in Public Administrations about **benefits of innovating** external interactions and internal processes

Mind-set change needed in Public Administration to publish data considering **users' needs**

Artificial intelligence, machine created data validation and digitalisation of services key technology trends

Vital to build on SDIs to make **spatial data available** to a wider audience (e.g. crawlable on the web)

Private sector role as an intermediary to provide added value services on top of public data and stimulate competition

New ELISE visual identity - @EULocation



Home Notifications Messages Search Twitter Tweet

ELISE
Enabling digital government through geospatial & location intelligence

Tweets 245 Following 271 Followers 309 Likes 25 Lists 1 Moments 0 Edit profile

ELISE
@EULocation
European Location Interoperability Solutions for e-Government (ELISE). Initiative supported by @EU_ISA2 #ELISE #ELISE_ISA2

Tweets Tweets & replies Media

You Retweeted
DigitalSingleMarket @DSMeu · Sep 24
App #developers, geeks & #opendata enthusiasts wanted: join #EUdatathon2017 & drive social #innovation through data bit.ly/2yu4w0f

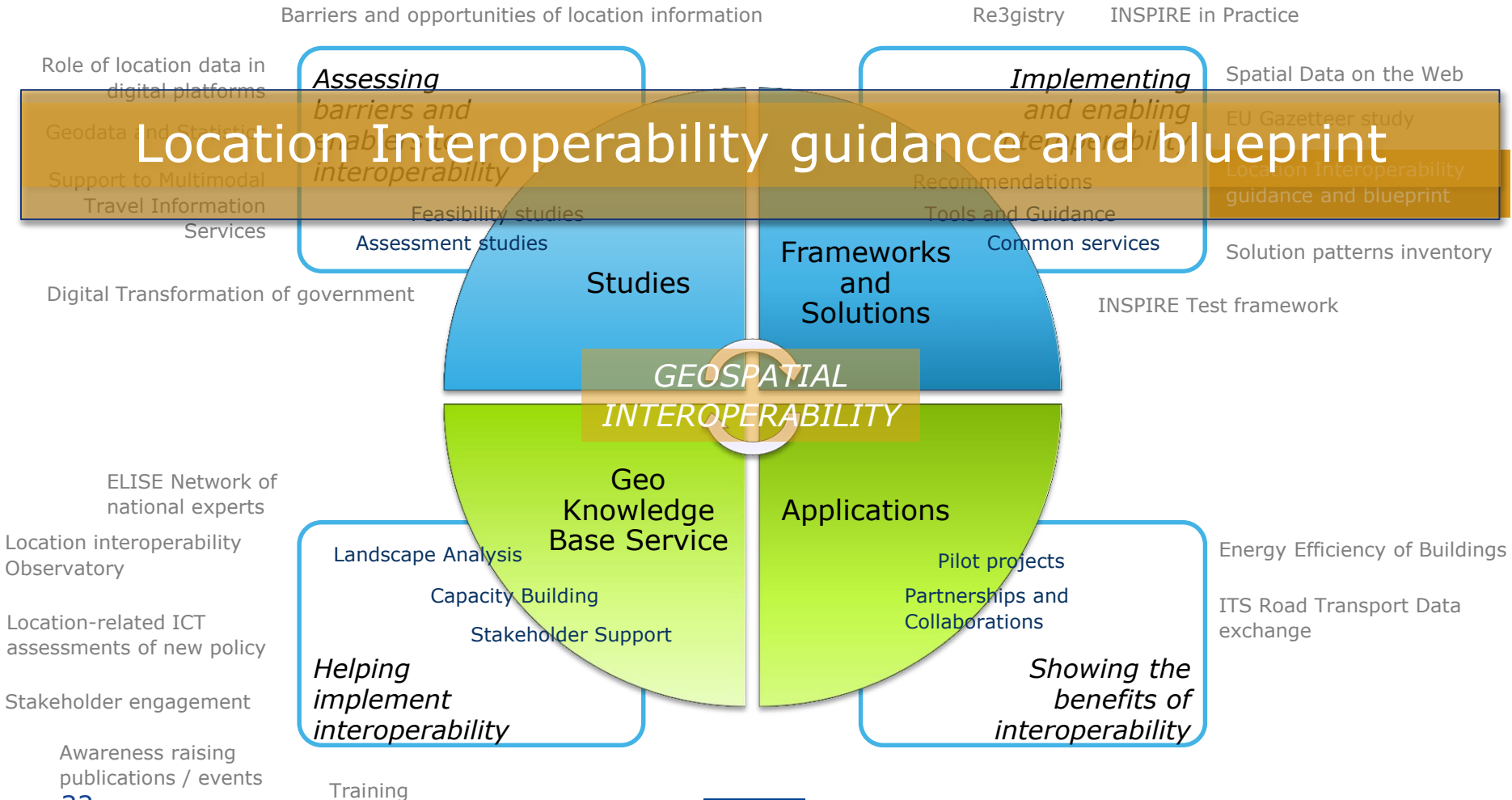
Your Tweet activity
Your Tweets earned 3,335 impressions over the last 28 days
[View your top Tweets](#)

<https://joinup.ec.europa.eu/community/elise/description>
https://ec.europa.eu/isa2/actions/elise_en

Collaboration opportunities for Member States

- Involvement in **shaping and steering** the **ELISE activities through the Working Group**
- Provide **advice and expertise** for **studies and guidelines**
- Contribute **to the location interoperability observatory** as **MS expert**
- **Testing** and development of **geospatial interoperability tools** and solutions
- **Reuse of solutions** (e.g. Re³gistry, application pilot solutions) **and best practices** (e.g. Blueprint and detailed guidance) + contributions to improve the knowledge base
- **Cooperation in pilot applications** in the field of energy, transport and common services (Gazetteer)
- Possibility for pan-European and international projects/initiatives to **participate in pilot applications** as partners or observers


ELISE: ongoing and future activities







The Blueprint is comprehensive and actionable







18 recommendations to reach the EULF vision


Recommendation 1:
Connect location information

	Why: Core location information ...
	How: ICT strategies ...
	Challenges: Lack of understanding by policy makers...
	Best Practices: #1: A generic GIS ...

Find detailed guidance for on ...in **Guidelines** for ...

Annexes

 Best Practices	 Role-based methodologies
 Further reading	 Document background

The role-based methodologies indicate the relevant recommendations that should be considered when undertaking the typical tasks for each of these roles.

Policymaker	Preparation	Adoption	Implementation	Application		
INSPIRE Data Publisher	Plan for INSPIRE	Identify spatial data sets	Create and maintain reusable spatial data sets	Provide discovery, view and trans-formation services	Monitor and report on INSPIRE	Support use of spatial datasets
ICT Manager and Developer	Plan	Design	Develop and test	Release, operate and maintain	Review and improve	
Data Manager	Data policy and governance	Data specification and modelling	Data acquisition and quality	Data documentation, organisation and control	Data access, sharing and dissemination	Data ware-housing and analytics Data archiving
Digital Public Service Owner, Manager and Implementer	Plan	Design	Develop and test	Introduce and operate	Review and improve	
Private Sector Product and Service Developer/Entrepreneur	Insight and definition	Prototyping and development	Testing and evaluation	Marketing and sales	Deployment	Maintenance and support



European Commission

The online

version: https://joinup.ec.europa.eu/community/eulf/og_page/eulf-blueprint

Contact | Search | Glossary | Help | Analytics Disclaimer | English (en)

European Commission **joinup** Login or Sign up Search

Share and reuse Interoperability solutions for public administrations, businesses and citizens

European Commission > ISA² > Joinup > Share and Collaborate > Eulf > EULF Blueprint

Home Find solutions Share and Collaborate Keep up-to-date People

Find communities My Communities Recommended Editor's Choice

3.22/5 | 9 votes

European Union Location Framework

Join this community

Overview EULF Transportation pilot EULF Marine pilot EULF Energy pilot **EULF Blueprint** Members list Related Forums Communicati... About

EULF Blueprint
Submitted by [Valaver Clementine](#) on June 30, 2017

The European Union Location Framework Blueprint is a guidance framework for 'location-enabling' digital government. The framework is divided into five focus areas, where a 'current state' assessment and 'future state' vision are outlined, and practical recommendations, 'how to' checklists, and best practice references are provided. To use the guidance, either scan the focus areas that interest you or follow the paths created for specific roles and activities. Please let us know if you have any additional best practices to share or suggestions for improvements to the guidance.

Access the Blueprint by focus area

- [Policy and strategy alignment](#)
- [Digital government integration](#)
- [Standardisation and reuse](#)

Choose your role to access the Blueprint

- [Policy Maker](#)
- [Public Service Owner, Manager and Implementer](#)
- [ICT Manager and Developer](#)
- [Data Manager](#)
- [INSPIRE Data Publisher](#)
- [Private Sector Product and Service Entrepreneur / Developer](#)

Add... Actions

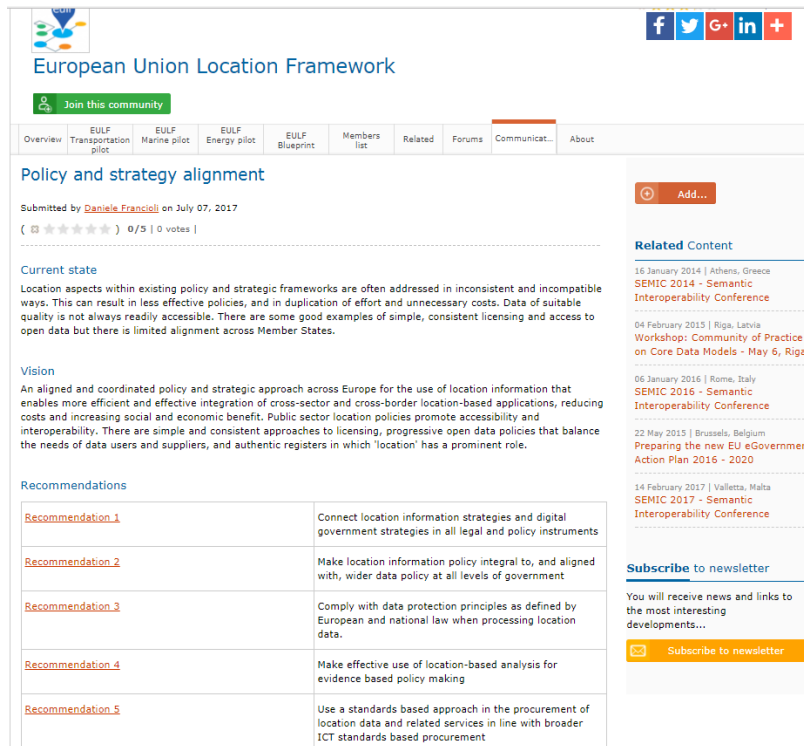
Subscribe to newsletter

You will receive news and links to the most interesting developments...

Subscribe to newsletter



Access along focus areas



European Union Location Framework

Join this community

Overview | EULF Transportation pilot | EULF Marine pilot | EULF Energy pilot | EULF Blueprint | Members list | Related | Forums | Communicati... | About

Policy and strategy alignment

Submitted by [Daniele Francioli](#) on July 07, 2017
(0/5 | 0 votes |)

Current state

Location aspects within existing policy and strategic frameworks are often addressed in inconsistent and incompatible ways. This can result in less effective policies, and in duplication of effort and unnecessary costs. Data of suitable quality is not always readily accessible. There are some good examples of simple, consistent licensing and access to open data but there is limited alignment across Member States.

Vision

An aligned and coordinated policy and strategic approach across Europe for the use of location information that enables more efficient and effective integration of cross-sector and cross-border location-based applications, reducing costs and increasing social and economic benefit. Public sector location policies promote accessibility and interoperability. There are simple and consistent approaches to licensing, progressive open data policies that balance the needs of data users and suppliers, and authentic registers in which 'location' has a prominent role.

Recommendations

Recommendation 1	Connect location information strategies and digital government strategies in all legal and policy instruments
Recommendation 2	Make location information policy integral to, and aligned with, wider data policy at all levels of government
Recommendation 3	Comply with data protection principles as defined by European and national law when processing location data.
Recommendation 4	Make effective use of location-based analysis for evidence based policy making
Recommendation 5	Use a standards based approach in the procurement of location data and related services in line with broader ICT standards based procurement

Related Content

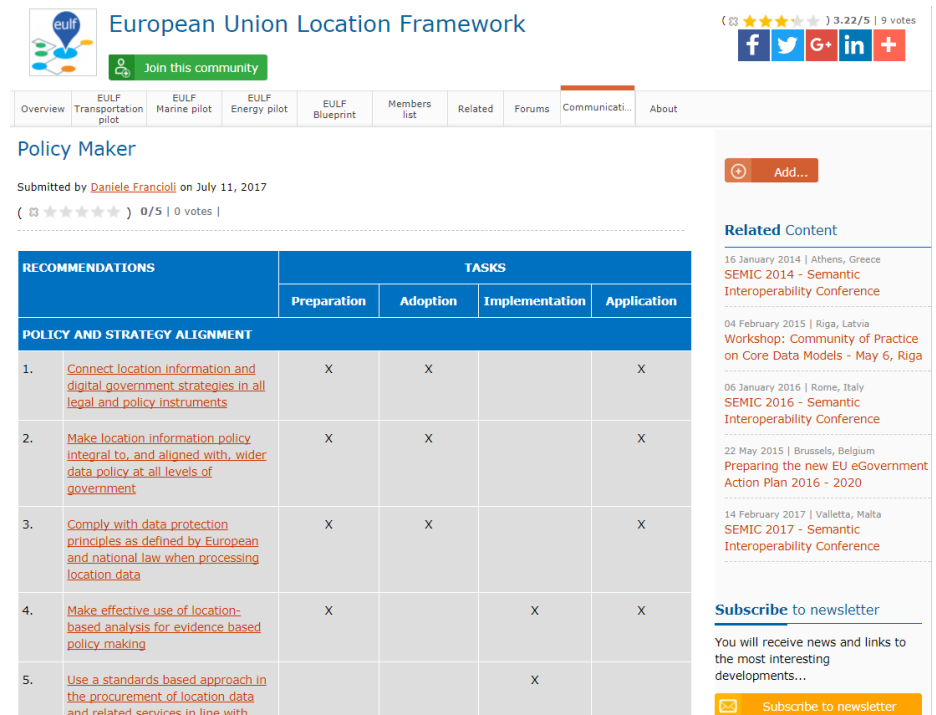
- 16 January 2014 | Athens, Greece
SEMIC 2014 - Semantic Interoperability Conference
- 04 February 2015 | Riga, Latvia
Workshop: Community of Practice on Core Data Models - May 6, Riga
- 06 January 2016 | Rome, Italy
SEMIC 2016 - Semantic Interoperability Conference
- 22 May 2015 | Brussels, Belgium
Preparing the new EU eGovernment Action Plan 2016 - 2020
- 14 February 2017 | Valletta, Malta
SEMIC 2017 - Semantic Interoperability Conference

Subscribe to newsletter

You will receive news and links to the most interesting developments...

[Subscribe to newsletter](#)

Access through your role



European Union Location Framework

Join this community

Overview | EULF Transportation pilot | EULF Marine pilot | EULF Energy pilot | EULF Blueprint | Members list | Related | Forums | Communicati... | About

Policy Maker

Submitted by [Daniele Francioli](#) on July 11, 2017
(0/5 | 0 votes |)

Related Content

- 16 January 2014 | Athens, Greece
SEMIC 2014 - Semantic Interoperability Conference
- 04 February 2015 | Riga, Latvia
Workshop: Community of Practice on Core Data Models - May 6, Riga
- 06 January 2016 | Rome, Italy
SEMIC 2016 - Semantic Interoperability Conference
- 22 May 2015 | Brussels, Belgium
Preparing the new EU eGovernment Action Plan 2016 - 2020
- 14 February 2017 | Valletta, Malta
SEMIC 2017 - Semantic Interoperability Conference

Subscribe to newsletter

You will receive news and links to the most interesting developments...

[Subscribe to newsletter](#)

RECOMMENDATIONS	TASKS			
	Preparation	Adoption	Implementation	Application
POLICY AND STRATEGY ALIGNMENT				
1.	Connect location information and digital government strategies in all legal and policy instruments	X	X	X
2.	Make location information policy integral to, and aligned with, wider data policy at all levels of government	X	X	X
3.	Comply with data protection principles as defined by European and national law when processing location data	X	X	X
4.	Make effective use of location-based analysis for evidence based policy making	X	X	X
5.	Use a standards based approach in the procurement of location data and related services in line with		X	

ELISE: ongoing and future activities

Role of location data in Digital Platforms

Barriers and opportunities of location information

Re3gistry

INSPIRE in Practice

Role of location data in digital platforms

Geodata and Statistics

Support to Multimodal Travel Information Services

Digital Transformation of government

ELISE Network of national experts

Location interoperability Observatory

Location-related ICT assessments of new policy

Stakeholder engagement

Awareness raising publications / events

37

Assessing barriers and enablers to interoperability

Feasibility studies
Assessment studies

Studies

Implementing and enabling interoperability

Recommendations
Tools and Guidance
Common services

Frameworks and Solutions

INSPIRE Test framework

Spatial Data on the Web
EU Gazetteer study

Location Interoperability guidance and blueprint

Solution patterns inventory

GEOSPATIAL
INTEROPERABILITY

Geo Knowledge Base Service

Landscape Analysis

Capacity Building

Stakeholder Support

Helping implement interoperability

Training

Applications

Pilot projects

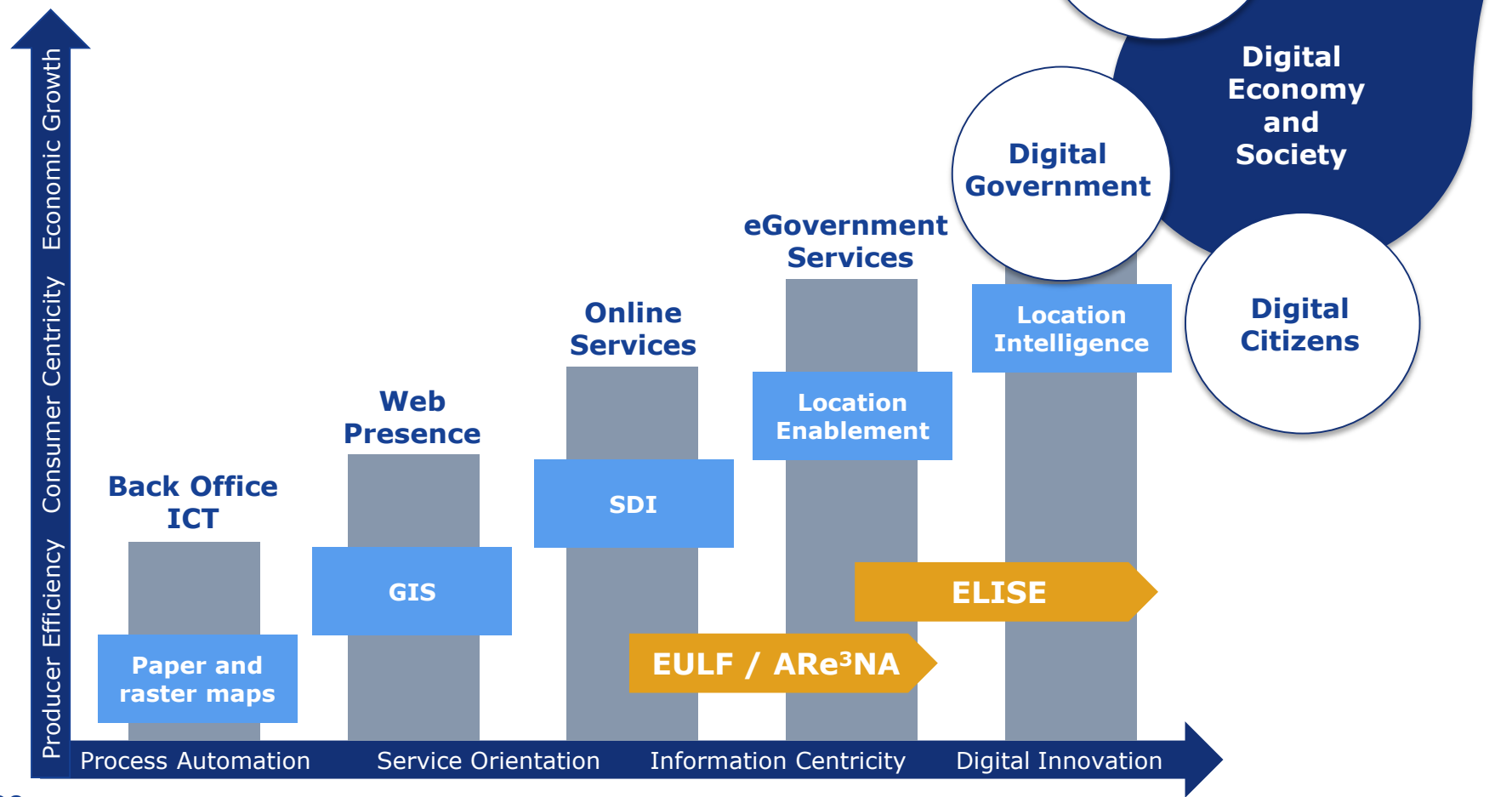
Partnerships and Collaborations

Showing the benefits of interoperability

Energy Efficiency of Buildings

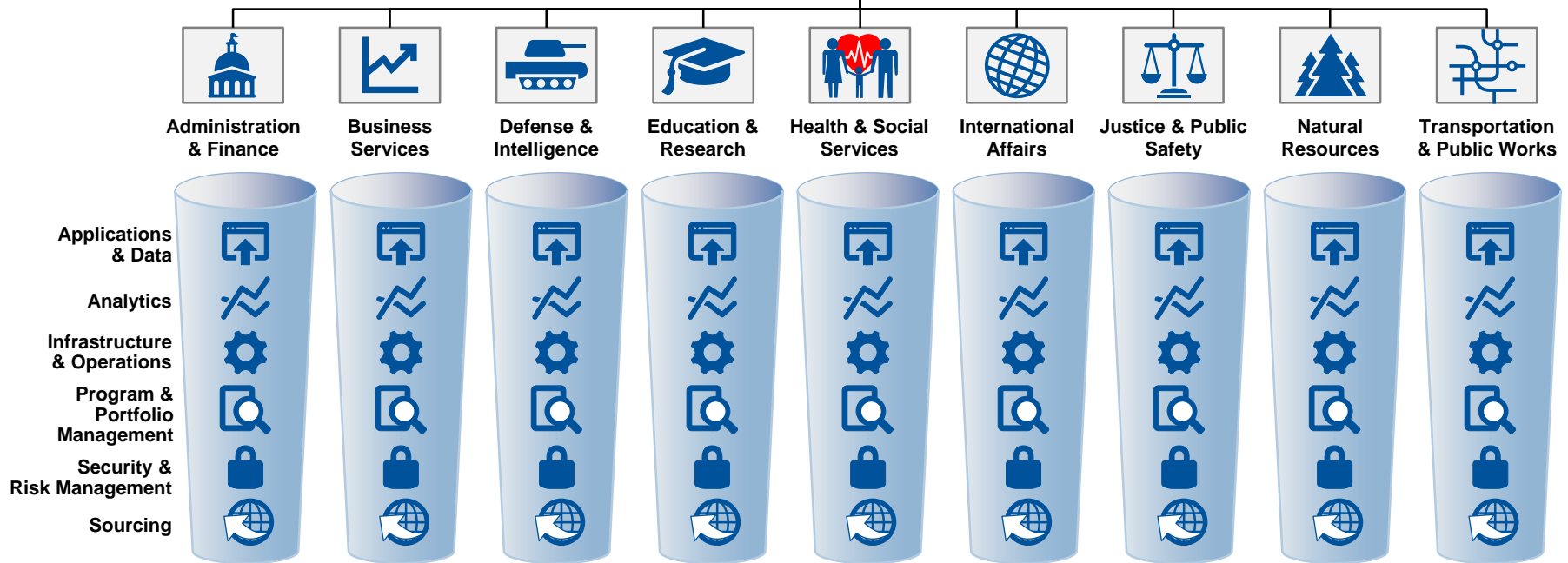
ITS Road Transport Data exchange

ELISE: Location Data underpins transformation towards Digital Government



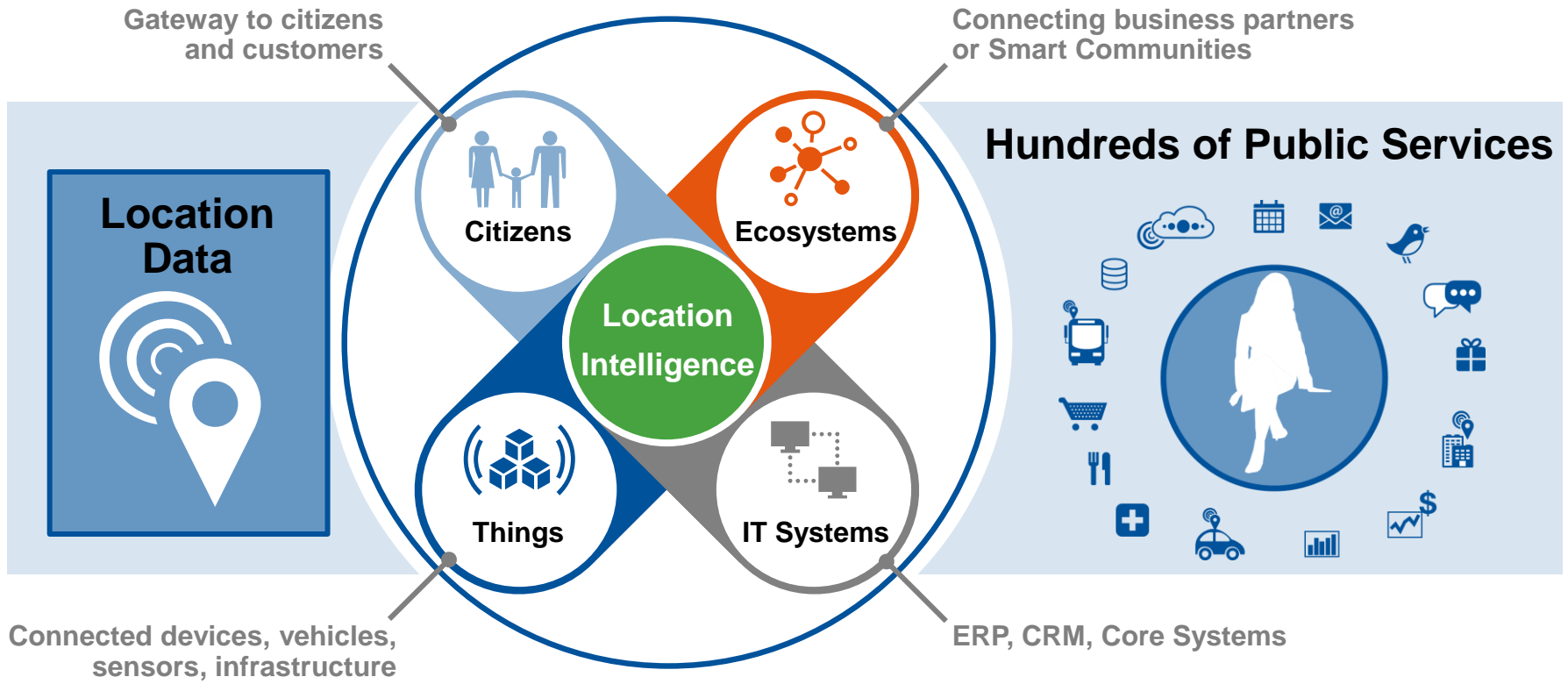
Digital Government is Confused With E-Government

E-government reinforces and perpetuates an obsolete business architecture



Digital government takes advantage of digital data to optimize, transform and create government services

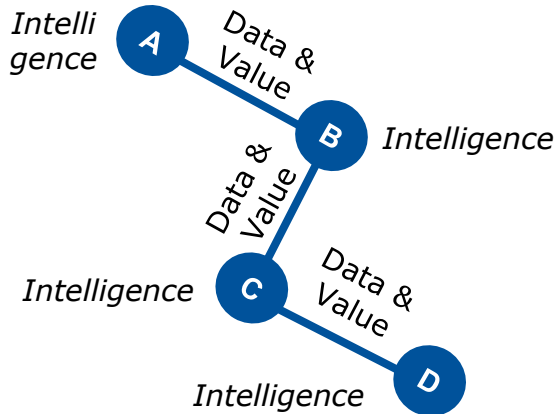
At the core of the transformation towards Digital Government is the Digital Platform ... delivering cross-sector and cross-border Operational Efficiencies and a unified Citizen Experience



Digital Platforms will transform the traditional linear business models to become multidimensional and multidirectional, scale exponentially and support hundreds of public services

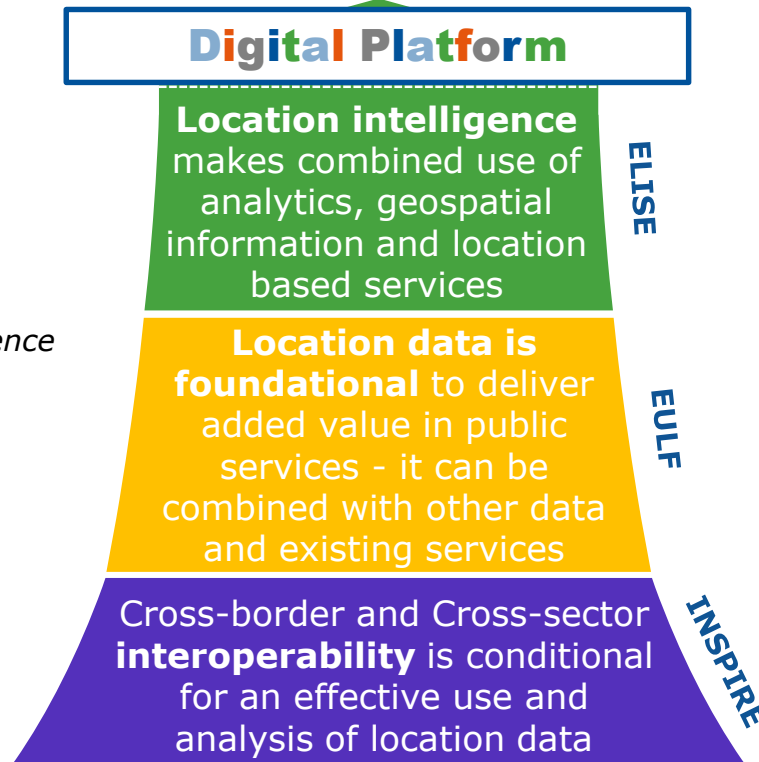
A value chain approach

is
one-dimensional
and
one-directional



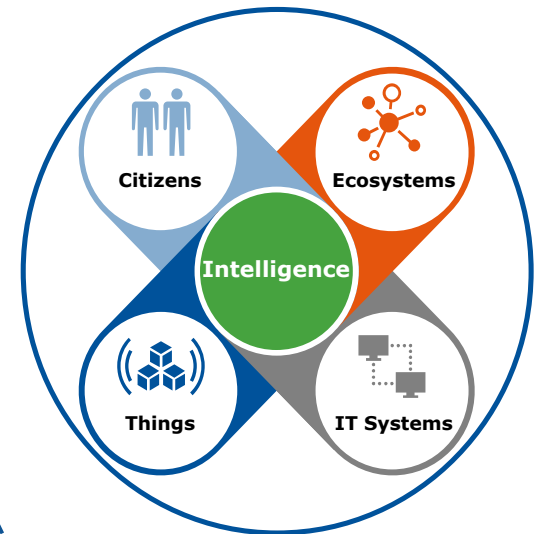
**Linear
impact of
eGovernment**

Hundreds of Public Services



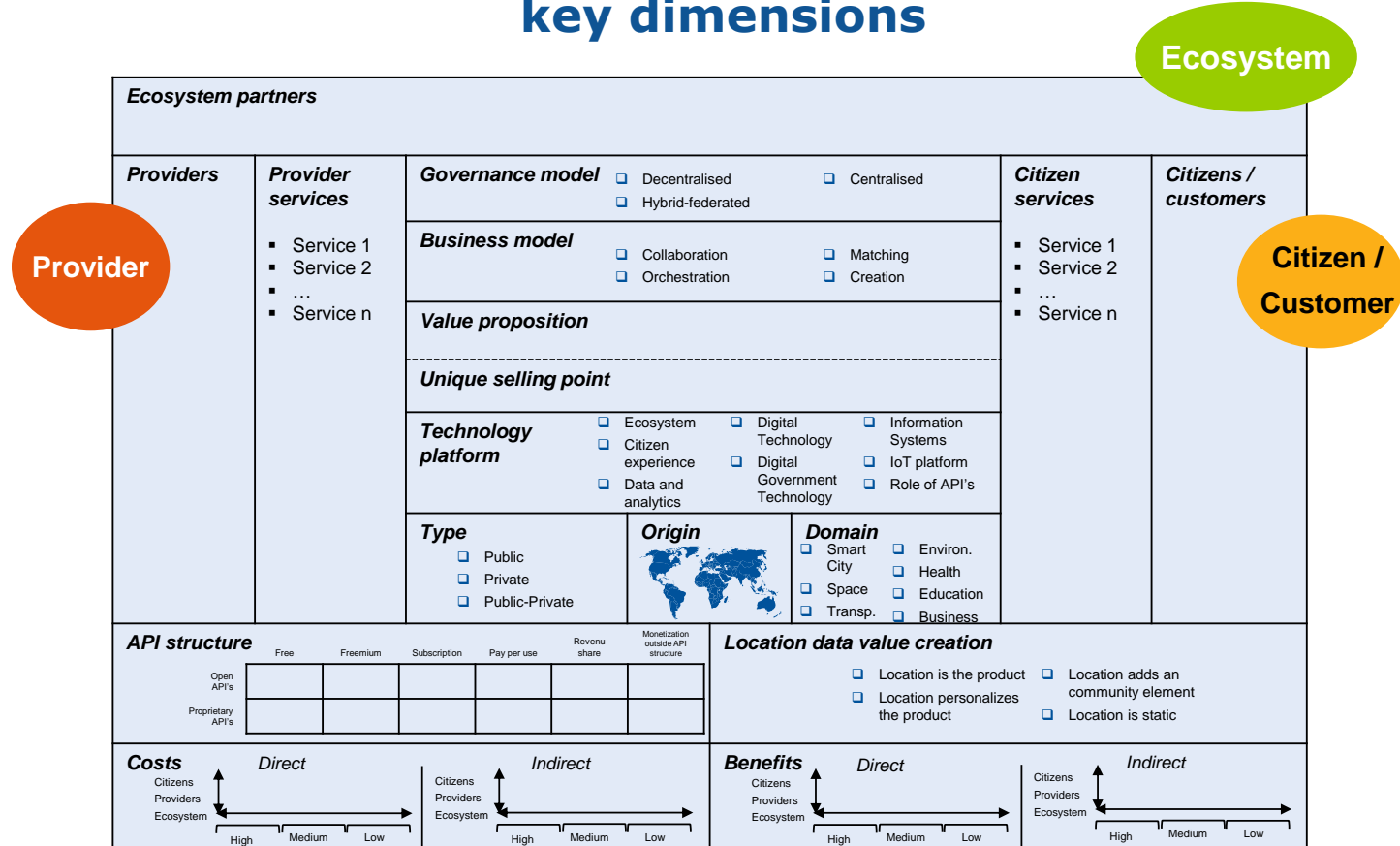
A digital platform approach

is
multidimensional
and
multidirectional



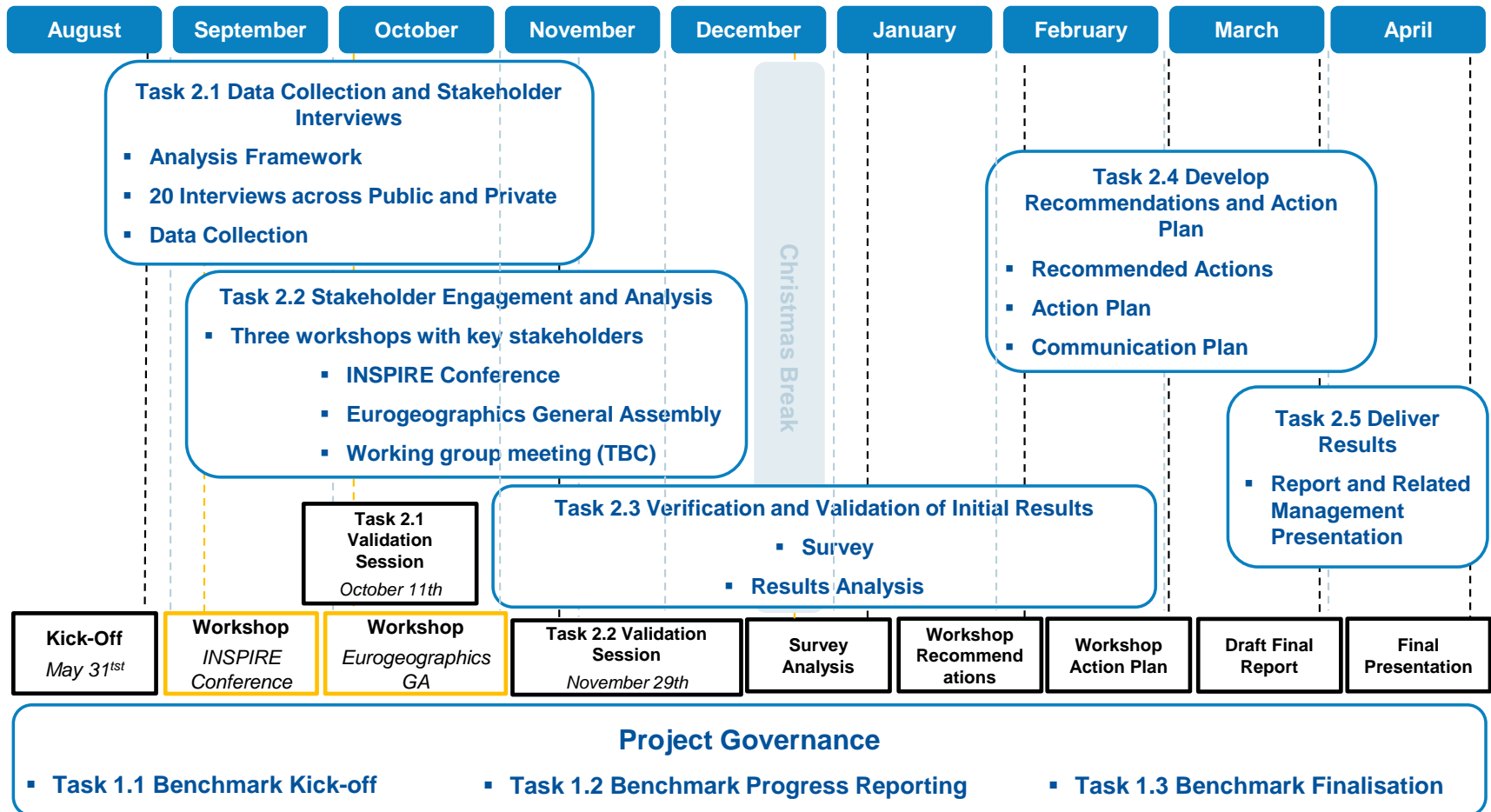
**Exponential
impact of
Digital
Government**

Introducing and developing the Digital Platform Canvas – a reusable framework to describe Digital Platforms along all its key dimensions



You are welcome to contribute as stakeholder!

Public results from the study can be expected in May 2018



Want to know more?

ELISE

**European Location
Interoperability Solutions
for e-Government**

Get started: [ELISE Action page](#)

Join and collaborate: [ELISE Community](#)

Stay tuned:  [@EULocation](#)



<http://inspire.ec.europa.eu/>



The ELISE action is undertaken with the support of [ISA²](#).

ISA² is a EUR 131 million programme of the European Commission which develops digital solutions that enable interoperable cross-border and cross-sector public services for the benefit of public administrations, businesses and citizens across the EU.

ISA² supports a large range of [actions](#) and [solutions](#). The ISA² solutions can be used free of charge and are open source when related to IT.

[ISA²](#) - IT solutions for less bureaucracy You click, we link. Follow us on [twitter](#).