



Francesco Pignatelli  
EC/JRC



Stephen T'Siobbel  
TomTom



# Facilitate the up-to-date flow of road safety data between public authorities and private map providers

## ISA<sup>2</sup> MID-TERM CONFERENCE

Linking public administrations, businesses and citizens

Follow discussions online

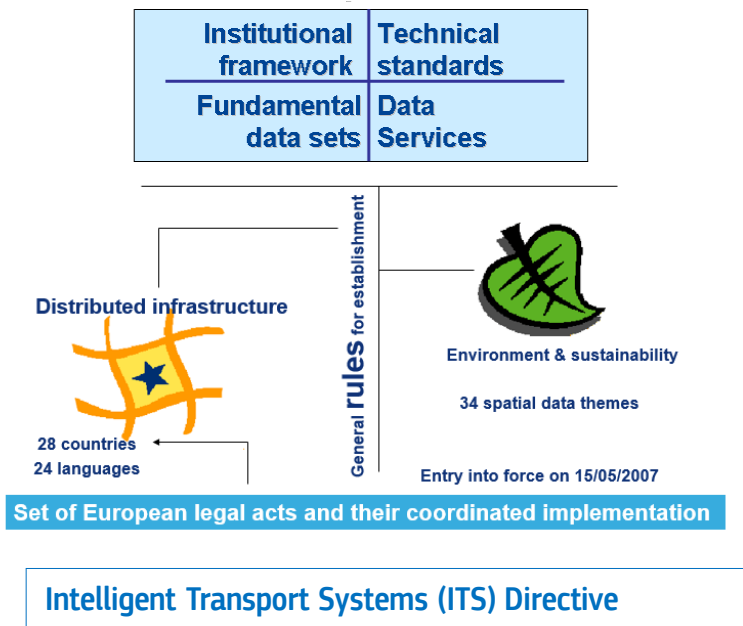
 @EU\_isa2

 ISA<sup>2</sup> Programme

**#ISA2CONF18**

## INSPIRE, Europe's "lingua franca" for anything geospatial

*Directive 2007/2/EC of the European Parliament and of the Council of 14 March 2007 establishing an Infrastructure for Spatial Information in the European Community (INSPIRE)*



*Directive 2013/37/EU of 26 June 2013 amending Directive 2003/98/EC on the re-use of Public Sector Information (PSI) Directive 2003/98/EC*

*Communication from the Commission to the European Parliament, the Council, the European Economic and Social Committee, and the Committee of the Regions: A Digital Agenda for Europe - COM(2010) 245 final/2*

Digital Single Market strategy

*Communication from the Commission to the European Parliament, the Council, the European Economic and Social Committee, and the Committee of the Regions: The EU eGovernment Action Plan 2016 -2020 COM(2016) 179 final*

*The New European Interoperability Framework COM(2017) 134*

*EU implementation of the G8 Open Data Charter*  
*EU Open Data Strategy*

*Tallinn Declaration on eGovernment*



## Geospatial data beyond INSPIRE: ELISE



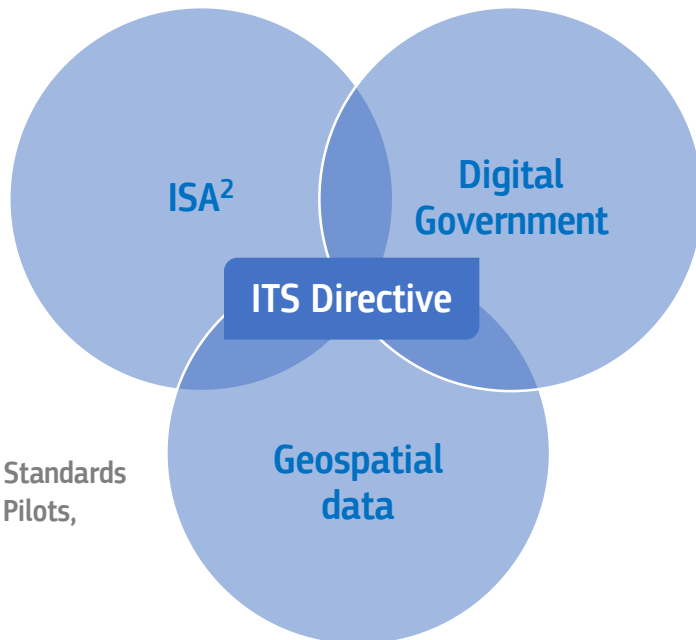
Interoperability  
Solutions for European Public  
Administrations, Businesses and Citizens



Studies  
Frameworks and Standards  
Applications and Pilots,  
Services

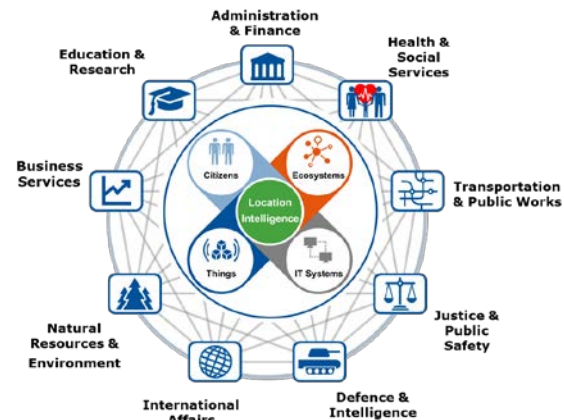
European  
Location  
Interoperability  
Solutions for  
E-Government

### Location Interoperability for Digital Government



Digital Single Market  
e-Government Action Plan  
Tallinn Declaration  
Digital Europe Programme

Technology-enabled Innovation and Growth





# Road Data Exchange

Between Road Authorities and Private map providers

Stephen T'Siobbel

Sr. Partner Development Manager

**ELISE Action facilitates and foster the exchange of static road attributes (i.e. speed limits) between EU public road authorities and private map makers for car navigation (i.e. TomTom).**

In the **Transportation Pilot**, INSPIRE standards are used to get geospatial data from public administrations to private companies (G2B)

Commercial map providers like HERE and TomTom need road network data that are: **consistent, accurate, and up-to-date**

Significant reduced error rates in maps of from 25% to 7%, and Road Authorities (SE, NO) upgraded from quarterly to daily updates to map providers

Map providers were able to move from disparate national processes to more standardised processes in EU countries

Pilot now being rolled out across Europe under CEF – Transport (14 countries)

Next step is to open solutions to **ALL** industry players

*Up-to-date flow of road safety data between National Road Authorities and private map providers*



<https://www.youtube.com/watch?v=jnnySATwTYE>



# Road Data Exchange

Between Road Authorities and Private map providers

**Stephen T'Siobbel**  
Sr. Partner Development Manager



## **Our mission**

We are on a mission to create the most innovative technologies to help shape tomorrow's mobility.

## Four focused business units

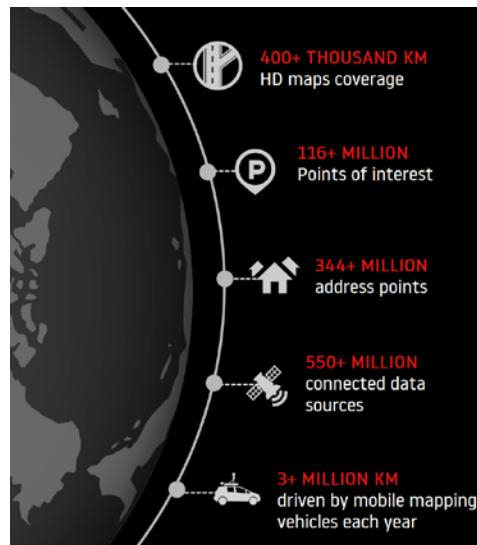


Powered by  
**3 core technologies**

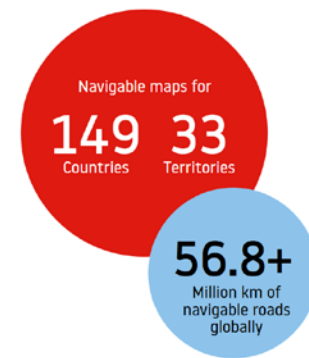
**01**  
Maps

**02**  
Navigation

**03**  
Services



## Map facts



**INTELLIGENT MAP MAKING**

Combining professional map making  
methods with community input

**Professional Map Making**

Mobile  
Mapping



Field  
Survey



Authoritative  
Sources



**Community Map Making**

Probe  
Data



Active Community  
Input & Social  
Media



Sensor  
Data





## CHALLENGE

Sourcing of reliable changes of road data  
in Europe in a harmonized way



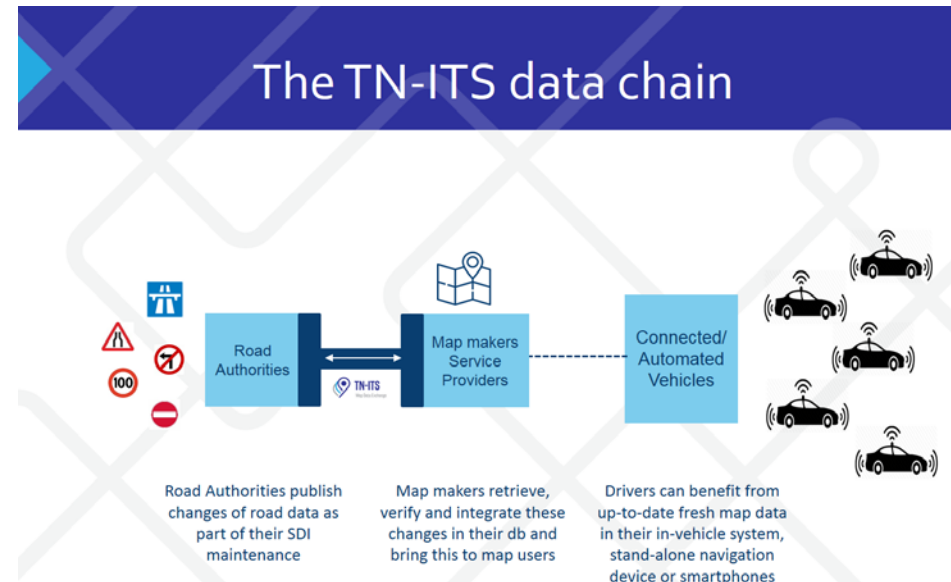
### SOLUTION

Specify & set-up a data exchange platform between road authorities and Map Providers

Have pilot implementations of such data exchange infrastructure

Deploy such infrastructure in Europe

Extend feature/attribute set



### APPROACH

Unite stakeholders, build consensus, make specifications and develop prototype(s)

Assess cross border aspects, explore service for different road classes (TEN-T to rural roads), evaluate location referencing methods, etc.

Start with Champions (Norway, Sweden, Finland), adoption in rest of Europe

Support use cases in areas of Autonomous Driving, MultiModal transport/Logistics



Transportation Pilot





## Want to know more?

### ELISE – the European Location Interoperability Solutions for E-government

Get started: [ELISE Action page](#)

Join and collaborate: [ELISE Community](#)

Stay tuned: [@EULocation](#)



The ELISE action is undertaken with the support of [ISA<sup>2</sup>](#).



<http://inspire.ec.europa.eu/>

[info@tn-its.eu](mailto:info@tn-its.eu)  
[www.tn-its.eu](http://www.tn-its.eu)

