



Single Market Scoreboard

2019 Edition

Performance per Member State

Sweden

Transposition of law

Transposition deficit: 0.1% (*last report: 0.3%*) – New decrease in addition to the huge decrease by 1.1 percentage points of December 2017. Sweden is now the Member State with the lowest transposition deficit, and equalled its best score of November 2012. In addition, Sweden's deficit stands at only 4% for the 23 directives with a transposition date within 6 months before the cut-off date for calculation (1.6.2018 – 30.11.2018). This shows that this Member State monitors the timely transposition of Single Market-related directives very well and with a short delay (see below).

EU average = 0.7%; Proposed target (in Single Market Act) = 0.5%

Overdue directives: 1 (*last report: 3*) and **none** more than 2 years overdue.

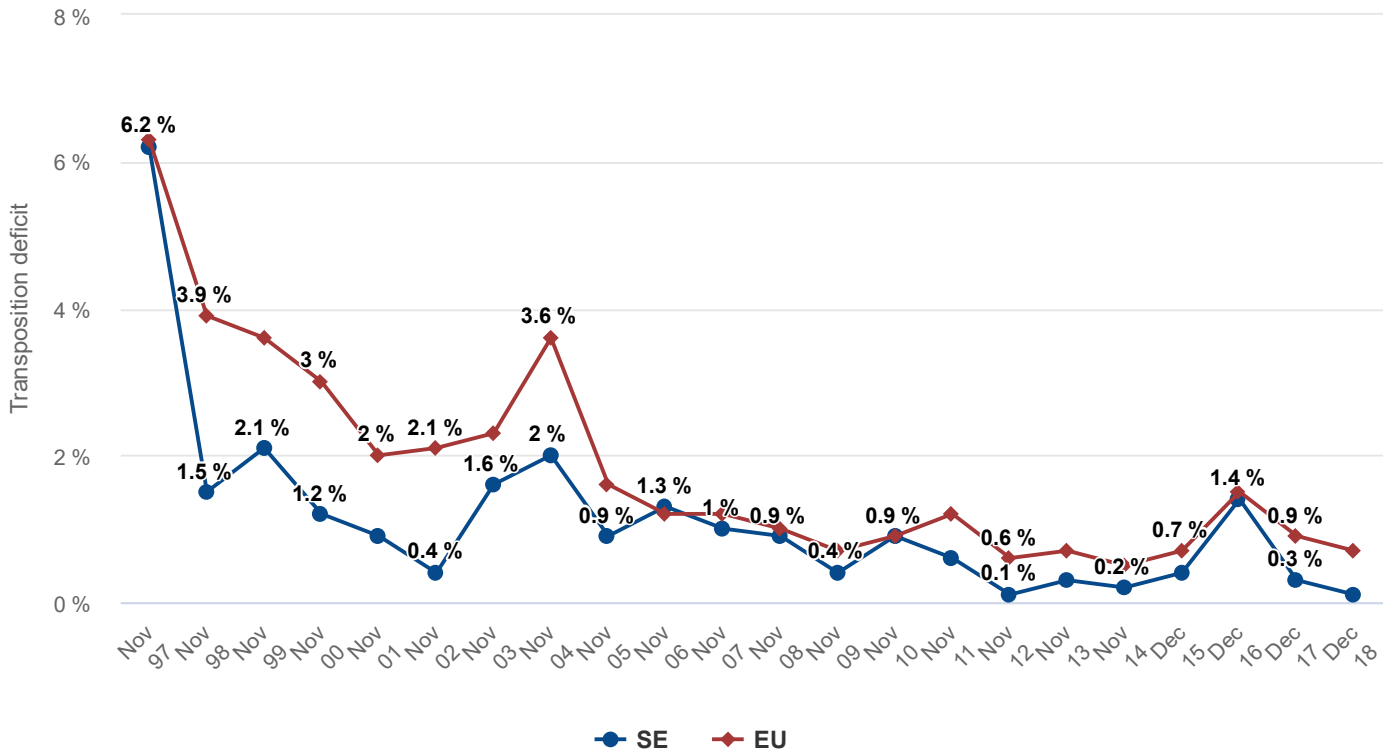
Average delay: 2.9 months (*last report: 3 months*) – With only 1 outstanding directive that has been due for less than 3 months, Sweden is the Member State with the 2nd shortest delay in transposing directives.

EU average = 8.4 months

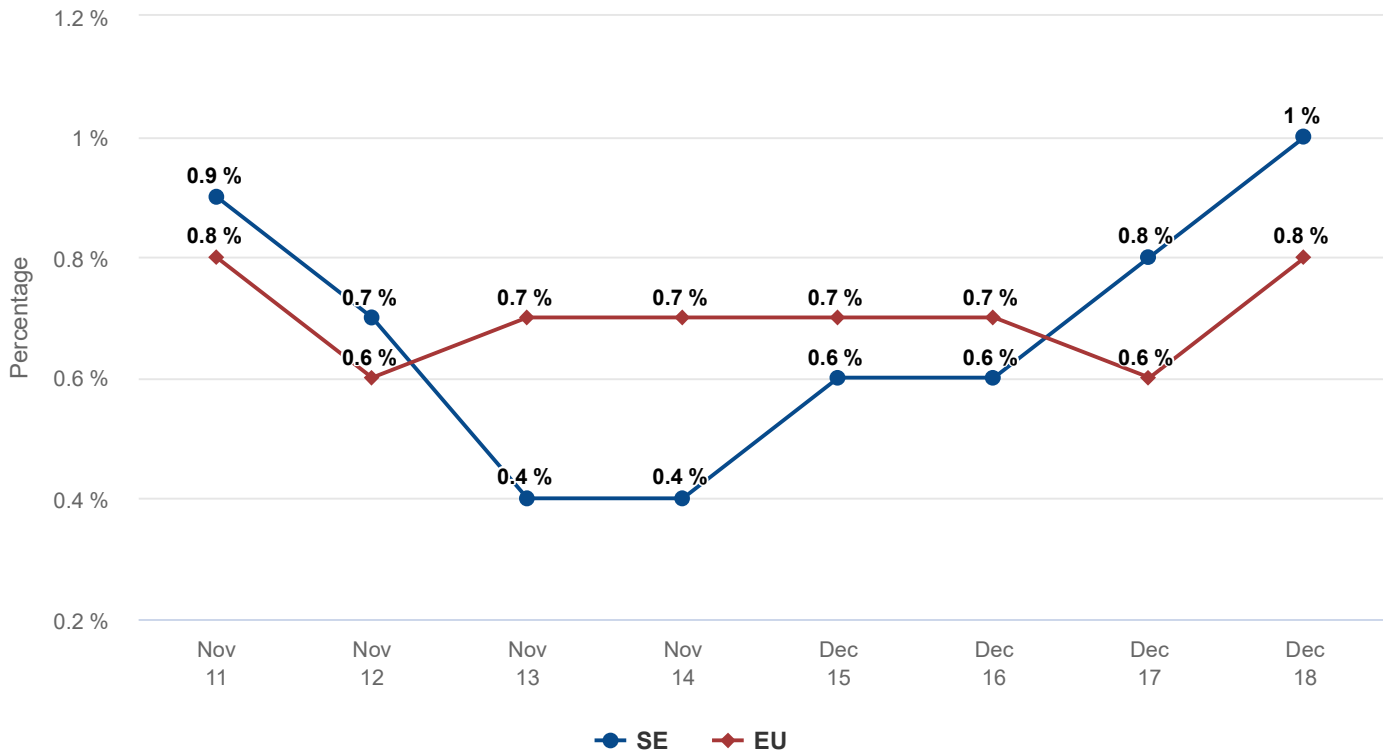
Conformity deficit: 1.0% (*last report: 0.8%*) – New increase by 0.2 percentage point. With 10 directives presumably incorrectly transposed, Sweden is above the EU average and in a group of 8 Member States whose deficit is more than twice the target proposed in the Single Market Act.

EU average = 0.8%; Proposed target (in Single Market Act) = 0.5%

Evolution of transposition deficit – Sweden



Evolution of conformity deficit – Sweden



Infringements

Pending cases: 21 (3 new cases and 7 cases closed, including 3 on services; last report: 25 pending cases) – Marked decrease by 4 cases and now back under the EU average. Sweden is in a group of 10 Member States that decreased their number of Single Market-related cases.

EU average = 25 cases

Problematic sectors: environment (6), of which water protection & management (3); transport (5 cases), of which air transport (4) = 52% of all pending cases.

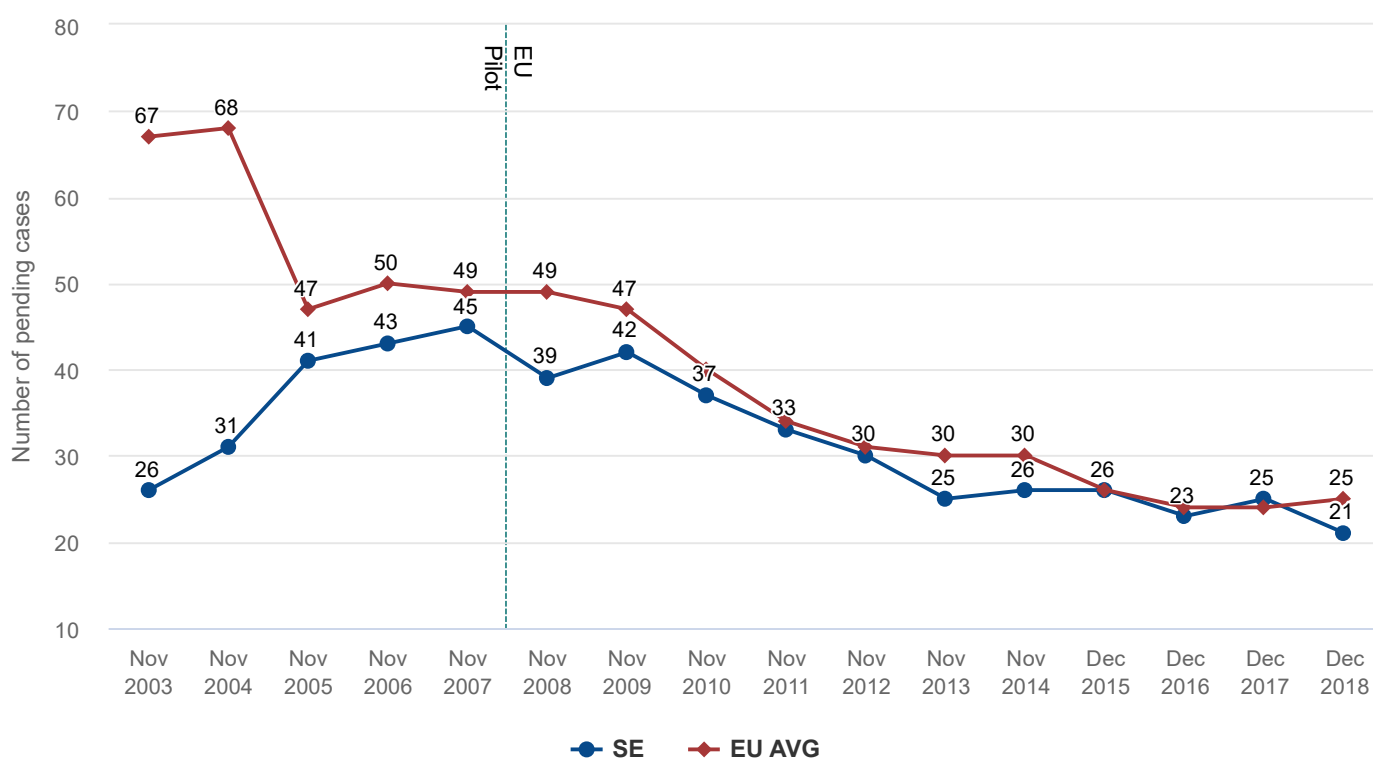
Average case duration: 49.2 months for the 18 cases not yet sent to the Court (*last report: 52.3 months*) – Decrease by 3.1 months, making Sweden the Member State with the 3rd highest case duration, up from 4th a year ago. Long average duration because some Swedish cases have been ongoing for a long time (in particular 2 cases on water protection and management running for 8 years and more, and 7 cases running for 4 to 8 years). Sweden managed to resolve 7 cases within a year, including 2 outstanding for more than 10 years.

EU average = 38.1 months

Compliance with court rulings: 27.5 months for the 2 cases at this stage of the procedure (*last report: 18.9 months*) – Marked increase of 8.6 months, as Sweden recently resolved 2 additional cases whose average time lag for compliance was more than 2 years, which pushed up the overall average. In addition, 1 case with a very short duration (1.8 months) is now older than 5 years and no longer part of the calculation. Sweden is over the 18-month threshold but still under the EU average.

EU average = 28.2 months

Evolution of infringement cases – Sweden



EU Pilot

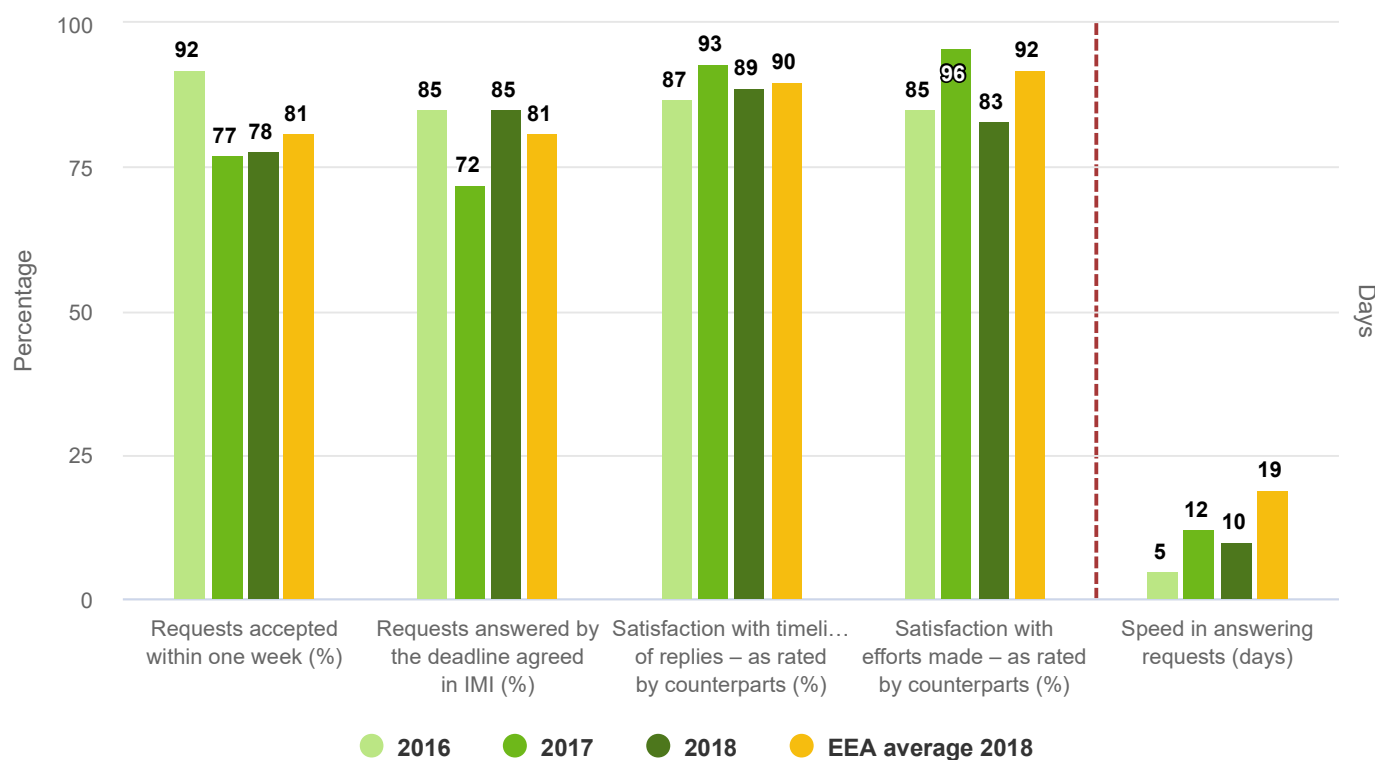
Sweden's average response time currently exceeds the 70-day time limit in EU Pilot by less than a week.

Internal Market Information System

Performance – Sweden continues to perform very well.

- Sweden's overall performance improved and was very good.
- The percentage of requests answered by the deadline agreed in IMI improved significantly.
- Further efforts should be made to accept requests within 1 week, where performance remains below the EEA average.

Internal Market Information System – Sweden



EURES

National provider: [Arbetsförmedlingen](#) (Swedish Employment Service)

EURES advisers (nationally): 55

Performance: good.

Your Europe

The EU has set up a **single digital gateway** providing access to information, to procedures and to assistance and problem-solving services.

The specific regulation setting up the single digital pathway is Regulation 2018/1724 of 2 October 2018. Article 29 of the Regulation establishes a group to coordinate work on the gateway. The gateway coordination group will meet in three configurations, one devoted to information, meeting twice a year. The other two configurations are dedicated to ICT and e-procedures and assistance services.

The information group will largely continue the work of the Your Europe Editorial Board. This is to ensure that the gateway coordination group's work does not overlap with that of other expert groups or sub-groups.

National equivalent?

Portal for citizens migrating to Sweden in Sweden in Swedish, English and Russian (plus selected content in a number of other languages): www.migrationsverket.se

Business portal in Swedish and English: www.verksamt.se

Record for this period

- active participation in Editorial Board work
- responsive to most of the requests for information for the website
- promotional activities and back-linking from national websites to Your Europe

Recommended action

Continue to:

- ensure stable representation in the single digital gateway information group
- attend the single digital gateway information group meetings twice a year
- provide information, when requested, on how the country applies single market rules
- raise awareness about Your Europe within the national administration and among potential end users
- link national websites to Your Europe

Make an effort to:

- provide all missing information on how the country applies single market rules (specifically on residence and running a business)

SOLVIT

- **Caseload – medium**

Submitted cases: 46 (35 in 2017)

Received cases: 81 (88 in 2017)

- **Resolution rate: 78% (45% in 2017)**

- **Handling time (home centre)**

Reply in 7 days: 66% (70% in 2017) – poor

Cases prepared in 30 days: 63% (91% in 2017) – poor

Solutions accepted in 7 days: 87% (73% in 2017) – good

- **Handling time (lead centre)**

Cases accepted within 7 days: 73% (78% in 2017) – poor

Cases closed in 10 weeks: 81% (89% in 2017) – good

- **Staffing**

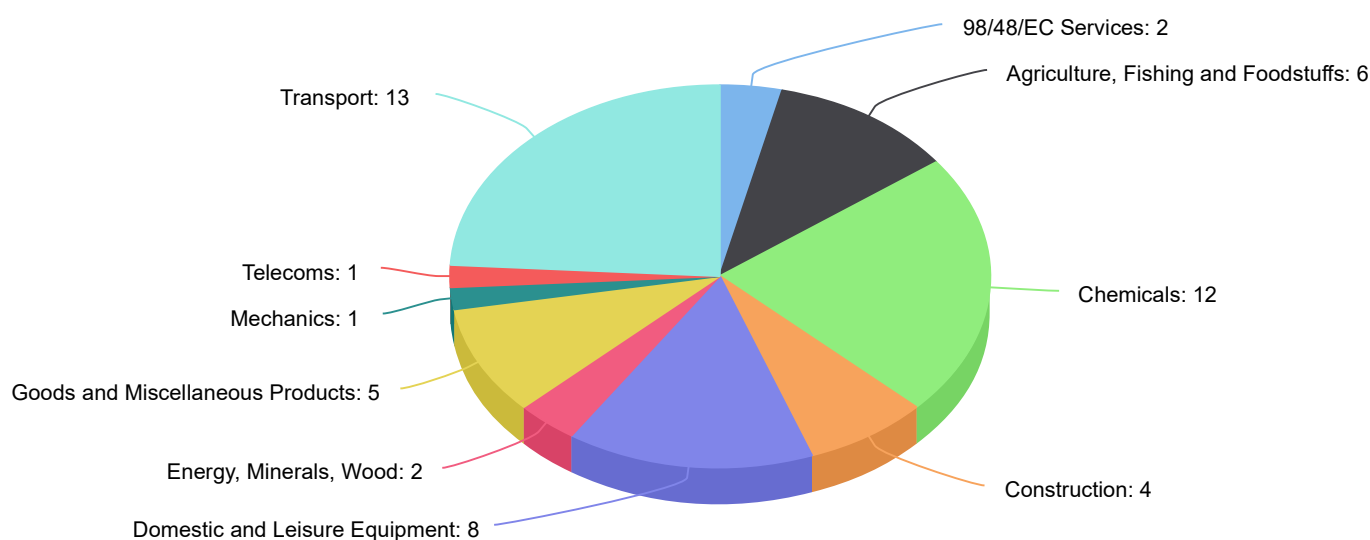
Continuity – yes

Sufficient for current caseload? yes

Technical Regulations Information System

Notifications per sector

54 notifications



Points of Single Contact

- 11 out of 20 analysed procedures (9 do not exist) are available partially online.
- Online procedures are not accessible for cross-border businesses.
- Broad range of information is available in another language.
- User feedback is collected systematically and used to improve the quality of the service provided.
- Points identified for improvement:
 - making procedures available fully online;
 - cross-border accessibility of online procedures.

Public procurement

Overall, Sweden's performance in 2018 was **satisfactory**. For further information and the methodology applied, please see the section on [Public procurement performance](#).

Postal services

For easier analysis, EU countries are divided into 3 groups reflecting absolute GDP per capita and EU accession date (as in the [EU postal sector study \(2010–13\)](#)):

- **Western** – Austria, Belgium, Denmark, Finland, France, Germany, Ireland, Luxembourg, the Netherlands, Sweden, the UK
- **Southern** – Cyprus, Greece, Italy, Malta, Portugal, Spain
- **Eastern** – Bulgaria, Croatia, Czechia, Estonia, Hungary, Latvia, Lithuania, Poland, Romania, Slovakia, Slovenia.

- **Transit time performance D+1**: transit time performance remained good during the period under review. In 2017, 90.3% of letters were delivered by the next day.



Some countries' reference figures for the previous period may differ slightly from those in the last Scoreboard. This is because these countries updated their data after publication.

Trade in goods and services

Sweden's trade integration in the single market for goods and services is just above the EU average. In 2017, trade integration for goods increased slightly, while trade integration for services increased quite strongly.

		Goods	Services
Intra-EU trade integration	% GDP 2017	19.9	8.0
	Change 2016 – 2017	4.0	4.8
Intra-EU imports	% GDP 2017	20.9	8.6
	Change 2016 – 2017	4.6	8.7

Foreign Direct Investment (FDI)

In 2017, Sweden's shares of intra-EU FDI inflows and outflows increased strongly. Its share of intra-EU FDI inward stock increased slightly, while its share of outward stock fell slightly.

	Share of intra-EU FDI flows		Share of intra-EU FDI stocks	
	inward	outward	inward	outward
% FDI 2017	5.1	6.7	2.8	2.0
Change 2016 – 17 (in pp)	3.6	6.3	0.1	-0.3

In 2017, Sweden's share of extra-EU FDI inflows increased slightly, whereas its share of extra-EU FDI outflows increased more strongly. Its shares of both inward and outward extra-EU FDI stocks remained unchanged.

	Share of extra-EU FDI flows		Share of extra-EU FDI stocks	
	inward	outward	inward	outward
% FDI 2017	2.4	5.1	1.1	1.8
Change 2016 – 17 (in pp)	1.1	4.0	0.0	0.0