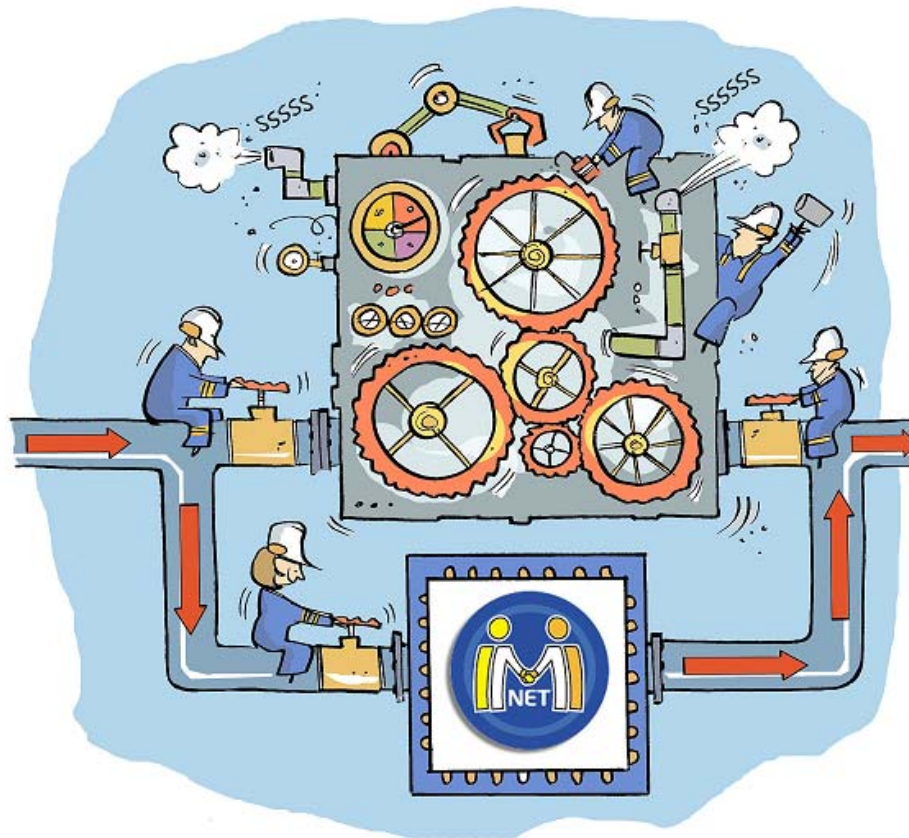


Internal Market Information System

How to split a request?



When to split a request?

- ✓ Can you answer some questions in a request immediately but other questions require more time?

You can split the request into two, one with the questions you can answer now and a second with the questions that will take more time.

- ✓ Should some questions in a request be answered by another authority?

You can split the request and send these questions to the other authority.

Request

- Questions to identify the profession
 - Identification of the profession
 - 1. Is the profession [architect] regulated in your territory? [Link](#)
 - 2. Which are the professional activities covered by the profession [architect] in your territory? [Link](#)
- Questions related to the professional
 - Holder of qualifications
 - 3. Does [*****] lawfully hold evidence of professional qualifications giving access in your territory to the profession of [architect]?
- Questions to identify the qualification
 - Holder of qualification
 - 4. Does [*****] lawfully hold the diploma listed for your country in Annex 5.7.1 of Directive 2005/36/EC? [Link](#)
- Questions regarding the exercise of the profession
 - Professional sanctions
 - 5. Can you confirm that, as of [02/07/2012], [*****] is not the subject of any disciplinary sanction in your territory, including with temporary effects, which is likely to have consequences for the pursuit of his/her professional activities of [architect]? [Link](#)

Attachments

Attachments

Name	Added by	Added on
------	----------	----------

Messages

When entering free text please indicate the language you are using in the dropdown next to the text box. If possible use a language which is understood by the Requesting Authority. The Requesting Authority has indicated that it understands the following languages: dansk (da)

Messages	User	Date
No comment.		

Accept request

Forward request

Split request

You can split the request before or after acceptance

Search for the recipient authority

17124 Professional Qualifications 02 Questions concerning permanent Awaiting acceptance
From Denmark - Authority for Sport establishment Send date 02/07/2012
To Czech Republic - CA Doctors CZ

Request overview Request management **Responding Authority**

Select Responding Authority

When entering free text please indicate the language you are using in the dropdown next to the text box. If possible use a language which is understood by the Requesting Authority. The Requesting Authority has indicated that it understands the following languages: dansk (da)

Use the authority search to identify the appropriate responding authority

Search for authority

Previous step Next step

Cancel

17124 Professional Qualifications 02 Questions concerning permanent Awaiting acceptance
From Denmark - Authority for Sport establishment Send date 02/07/2012
To Czech Republic - CA Doctors CZ

Authority Search

+ Select Search criteria

Informal Title	Names	Country
CA Doctors CZ	Doktoři Česká Republika	Czech Republic
CA Ministerstvo zdravotnictvi	CA Ministerstvo zdravotnictvi	Czech Republic
CA Ministerstvo zdravotnictvi	CA Ministerstvo zdravotnictvi	Czech Republic
CA Physiotherapists CZ	CA Fyzioterapeuti Česká Republika	Czech Republic
DIMIC PQ CZ	DIMIC PQ Česká Republika	Czech Republic

Page 2 of 5 Per Page 5

Displaying Topics 6 - 10 of 25

Select the questions to be moved to the new request.
You may also select attachments (they will remain in the original request as well).
To continue click 'Next step'.

Welcome Requests Search x Request x

Choose Competent Authority Enter Request Details Responding Authority Questions

At least one question must be selected.

- Questions related to the professional
 - Holder of qualifications
 - 1. Does [*****] lawfully hold evidence of professional qualifications giving access in your territory to the profession of [architect]?
 - Questions to identify the qualification
 - Holder of qualification
 - 2. Does [*****] lawfully hold the diploma listed for your country in Annex 5.7.1 of Directive 2005/36/EC? [Link](#)
 - Questions regarding the exercise of the profession
 - Professional sanctions
 - 3. Can you confirm that, as of [02/07/2012], [*****] is not the subject of any disciplinary sanction in your territory, including with temporary effects, which is likely to have consequences for the pursuit of his/her professional activities of [architect]? [Link](#)

Attachments [Hide translations](#)

Name
<input type="checkbox"/> attachment (en) Translate into bg Translate Open

Previous step Next step

Cancel

Give a reason for splitting and indicate the language of your message.

Welcome Action list Request

Choose Competent Authority Enter Request Details Responding Authority Questions Confirmation

Justification

When entering free text please indicate the language you are using in the dropdown next to the text box. If possible use a language which is understood by the Requesting Authority. The Requesting Authority has indicated that it understands the following languages: dansk (da)

A new request including the previously selected questions will be sent to the following authority: CA Doctors CZ
Once you confirm splitting the request, you will no longer have access to the forwarded questions.
Please note that all the draft answers and comments related to the selected questions will be discarded.
You can use comment box below to give any further details on this request to the new responding authority.

Please indicate the reason for splitting this request.

* en

Previous step Confirm request splitting

Cancel

Confirmation: pop-up message and entry in the Activity panel

Request has been split

Activity Panel		
Session Log Translations Reports		
Area	Reference / Name	Action
Information Request	17124	Request has been split

Tips and Tricks

If you split the request to yourself:

- ✓ You will find the new request in your Action list with a new number.
- ✓ Accept it and give a suitable deadline.

Indicative date for reply

The request was sent on: 16/07/2012. You are asked to accept the request within 10 days.

Due date proposed by the Requesting Authority:

Accept proposed due date: Yes

No

Proposed due date for reply:

For more information contact your National IMI Helpdesk

http://ec.europa.eu/internal_market/imi-net/imi_helpdesks/index.html



Internal Market Information System