

# ICT-PSP WP2011 Call 5 Objective 1.3: "Smart Connected Electro-Mobility"

ICT-PSP Info Day. 28/2/2011

Francisco Ferreira  
DG INFSO-G4

# The Challenges of Europe's Transport Sector

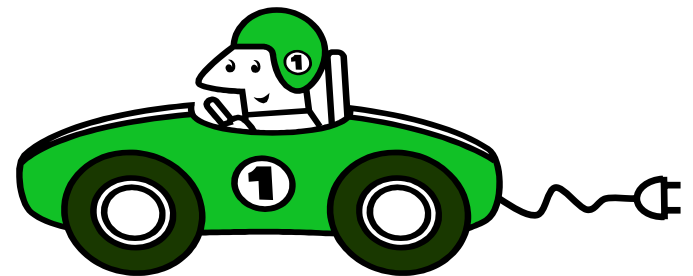
- **Safety**
- **Congestion**
- **Energy Efficiency & Emissions**
- **Growth in demand**
- **Balance between modes**
- **Make use of research and developments including ICT**
- **Increasing urbanisation**
- **Ageing of Europe's population**



# Meeting the Challenges

## Can Smart Connected Electro-Mobility contribute?

Electro-mobility is seen as one of the largest opportunities to radically change today's transport system and make a quantum leap into the next generation of sustainable mobility.



## Objective 1.3: “Smart Connected Electro-Mobility”

### ***Funding instrument: Pilot Type B***

*up to 3 pilots for up to 7M€ EC contribution in total.*

### ***Focus and outcomes:***

- Contribute to a **pre-deployment** and wider uptake of smart connected Electro Mobility;
- Test **urban and inter-urban ICT services** that facilitate and enhance the user experience of electrical vehicles.

## Objective 1.3

# Conditions and characteristics (1)

*Essential characteristics to achieve the expected outcomes:*

- Focus on **ICT applications for electro-mobility** that contribute to the full integration of electrical vehicles into the transport system;
- **All types of electric vehicles and plug-in hybrids** should be considered;
- Attention on the **origin of the electric energy** used (coal, gas, renewable, etc...).



## Objective 1.3

### Conditions and characteristics (2)

- The European Standardisation Organisations (ESOs) are currently deploying **standards for Electro-Mobility**. The pilots should test the interoperability of these standards;
- Focus on **ICT based services**, complementing ongoing EU projects and pilots;
- Include specific and realistic **quantified indicators** to monitor progress.



## Objective 1.3

### Conditions and characteristics (3)

- Participation of **relevant stakeholders** like public authorities, electricity utilities, automotive industry and suppliers, users, etc.
- Pilots should be designed to form a scalable base for **long term deployment**;
- **Dissemination** and communication activities should be included.



## ***Expected impact***

- Contributing to the European goal of creating a **sustainable transport system** with lower carbon emissions;
- Developing tools for measurement, monitoring and assessing **carbon emissions from the electro-mobility** sector;
- Contributing to meeting **Europe's energy efficiency targets for 2020.**



# Thanks for your attention

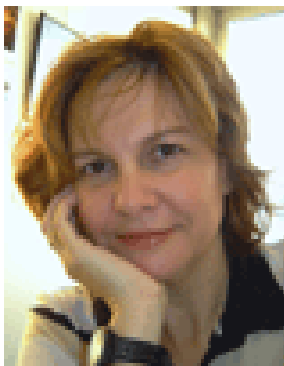


**Francisco Ferreira**

[francisco.ferreira@ec.europa.eu](mailto:francisco.ferreira@ec.europa.eu)

**Eva Boethius**

[eva.boethius@ec.europa.eu](mailto:eva.boethius@ec.europa.eu)



**Myriam Coulon Cantuer**

[myriam.coulon-cantuer@ec.europa.eu](mailto:myriam.coulon-cantuer@ec.europa.eu)

**Antonio Fernandez-Ranada Shaw**

[antonio.fernandez-ranada-shaw@ec.europa.eu](mailto:antonio.fernandez-ranada-shaw@ec.europa.eu)

