

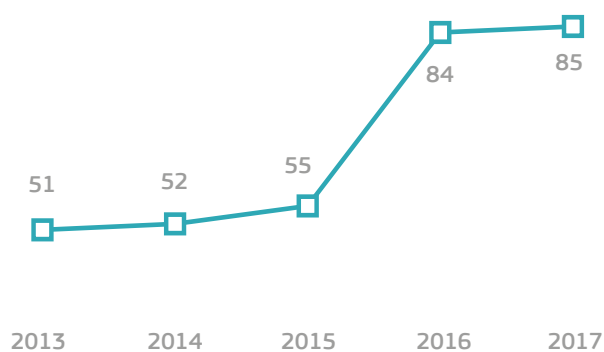


European Commission

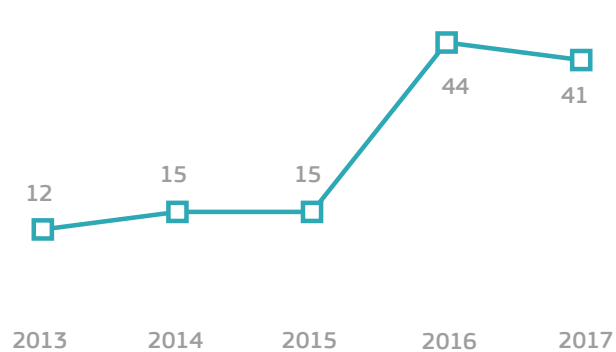
# Monitoring the Application of European Union Law

## Annual Report 2017

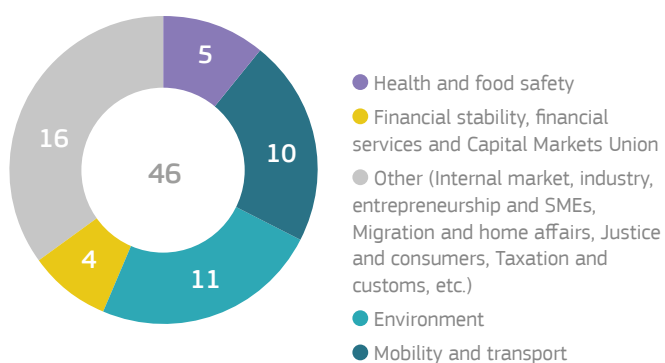
Infringement cases open as of 31 December 2017



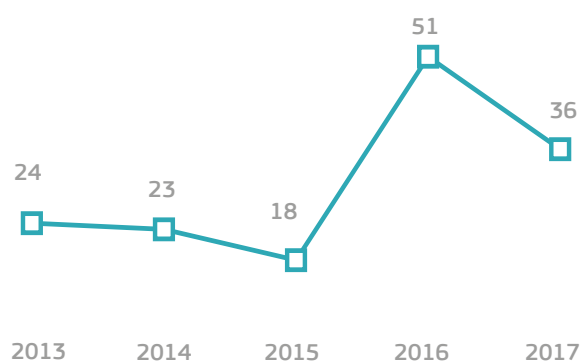
Late transposition<sup>1</sup> infringement cases



New infringement cases opened in 2017: main policy areas



New late transposition<sup>2</sup> infringement cases



<sup>1</sup> Number of infringement cases pending against this Member State on 31.12.2017 due to failure to implement an EU directive into national law on time.

<sup>2</sup> Number of new infringement cases opened against this Member State in 2017 due to failure to implement an EU directive into national law on time.



## Relevant rulings of the European Courts:

*The Court of Justice of the EU ruled that Portugal failed to fulfil its obligations under the Directive on driving licences as it failed to connect to the 'RESPER'<sup>3</sup> network<sup>4</sup>.*

<sup>3</sup> A network for the exchange of driving licence information.

<sup>4</sup> Directive [2006/126/EC](#), Commission v Portugal, [C-665/15](#).