



European
Commission

June 2020

Statistical Factsheet

Slovakia



CONTENTS

Main figures	1
1. KEY DATA	2
2. POPULATION & ECONOMY	3
3. FINANCIAL ASPECTS	4-5
4. ECONOMIC ACCOUNTS	6-12
5. AGRICULTURAL TRADE	13-14
6. FARM STRUCTURE	15-16

Main figures - Year 2019

Population (1 st January)	5 450 421	persons
Area*	49 035	km ²
Currency	EUR	euro
Nominal GDP at current prices	94 177	million EUR
GDP per capita at current prices	17 270	EUR
GDP per capita at purchasing power	23 504	PPS
Harmonised index of consumer prices	2.8%	change over previous year
Unemployment rate	5.8	% of labour force
Exports (goods & services)	87 712	million EUR (current prices)
Imports (goods & services)	86 744	million EUR (current prices)
Balance (goods & services)	968	million EUR (current prices)
Exports of agricultural products	2 907	million EUR
Imports of agricultural products	4 735	million EUR
Current account balance	-2.9	% of GDP
General government balance	-1.3	% of GDP
General government gross debt	48.0	% of GDP

Sources: European Commission, Eurostat, and Directorate General for Economic and Financial Affairs.

Updated: June 2020

* Data refer to the year

2016

1. KEY DATA

Macroeconomics				
Population (new European Commission methodology)				
Total population (number of persons), of which:	2019	5 450 421	1.2%	of EU27_2020
in predominantly rural regions (PR)	2019	37.4%	20.5%	in EU27_2020
in intermediate regions	2019	50.5%	39.1%	in EU27_2020
in predominantly urban regions	2019	12.1%	40.4%	in EU27_2020
Population in PR regions (number of persons)	2019	2 036 487	2.2%	of EU27_2020
GDP				
In EUR (current prices):				
total (million EUR)	2019	94 177	0.7%	of EU27_2020
GDP per capita (EUR/person)	2019	17 270	31 094	in EU27_2020
GDP per capita (PPS/person)	2019	23 504	31 744	in EU27_2020
Real GDP growth rate (% change over previous year)	2019	2.3%	1.5%	in EU27_2020
Gross value added				
Agriculture, forestry and fishing (% of total GVA)	2019	2.8%	1.8%	in EU27_2020
Financial aspects				
Agricultural expenditure				
Total expenditure (million EUR), of which:	2019	671.1	1.2%	of EU27_2020
Direct payments (%)	2019	66.3%	70.0%	in EU27_2020
Market measures (%)	2019	1.7%	4.5%	in EU27_2020
Rural development (%)	2019	32.0%	25.5%	in EU27_2020
Economic accounts of agriculture				
Agricultural output				
Agricultural goods output (million EUR), of which:	2019	2 081.3	0.5%	of EU27_2020
Crop output, of which:		58.0%	0.6%	of EU27_2020
Cereals (including seeds)		29.2%	1.3%	of EU27_2020
Industrial crops		14.4%	1.7%	of EU27_2020
Forage plants		5.9%	0.5%	of EU27_2020
Vegetables and horticultural products		4.0%	0.1%	of EU27_2020
Potatoes		2.7%	0.4%	of EU27_2020
Fruits		1.8%	0.1%	of EU27_2020
Wine		0.0%	0.0%	of EU27_2020
Olive oil		0.0%	0.0%	of EU27_2020
Animal output, of which:		34.8%	0.5%	of EU27_2020
Cattle		5.1%	0.4%	of EU27_2020
Pigs		5.5%	0.3%	of EU27_2020
Sheep and goats		0.5%	0.2%	of EU27_2020
Poultry		4.5%	0.5%	of EU27_2020
Milk		13.4%	0.5%	of EU27_2020
Eggs		4.2%	1.0%	of EU27_2020
Gross value added at basic prices (million EUR)	2019	506.7	0.3%	of EU27_2020
Agricultural input				
Total intermediate consumption (million EUR)	2019	1 743.0	0.7%	of EU27_2020
Agricultural income				
Indicator A (% change over previous year)	2019	-8.1%	2.4%	in EU27_2020
Farm structure				
Holdings				
Total (No), of which:	2016	25 660	0.2%	of EU27_2020
UAA < 5 ha (%)	2016	55.7%	66.6%	in EU27_2020
Economic size < 4 000 €	2016	52.6%	54.9%	in EU27_2020
Holder < 35 years (%)	number	11.1%	5.1%	in EU27_2020
Holder > 64 years (%)	number	20.3%	32.8%	in EU27_2020
UAA per holding (ha)	Total	73.6	15.2	in EU27_2020
Labour force				
AWU (No)	2016	47 190	0.5%	of EU27_2020
Female farm holders (%)	2016	19.9%	30.7%	in EU27_2020
Male farm holders (%)	2016	80.1%	68.8%	in EU27_2020
Agriculture in % of total employment	2019	2.8%	4.1%	in EU27_2020

Sources: European Commission, Eurostat and Directorate General for Agriculture and Rural Development.

Updated: June 2020

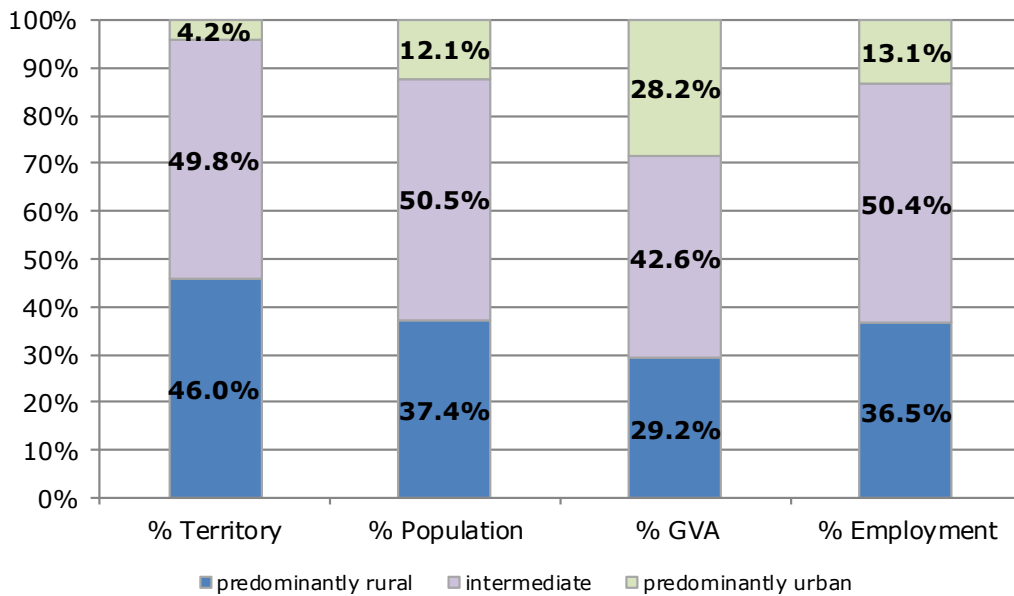
2. POPULATION AND ECONOMY

Importance of rural areas

	Territory (km ²)	Population (persons)	GVA (Million EUR)	Employment (persons)
Year	2016	2019	2016	2018
Predominantly Rural Regions	22 573	2 036 487	21 437	924 800
Intermediate Regions	24 409	2 754 336	31 282	1 276 800
Predominantly Urban Regions	2 053	659 598	20 717	331 800
Total	49 035	5 450 421	73 436	2 533 400

Source: Eurostat.

Updated: June 2020



Economic forecast

Indicators	2012	2013	2014	2015	2016	2017	2018	2019	2020	2021
GDP										
In million EUR (current prices)	73 484	74 355	76 256	79 758	81 038	84 517	89 721	94 177	89 794	96 962
Per capita (in PPS; current prices)	20 366	20 552	21 378	22 499	21 191	21 526	22 618	23 504	22 149	23 900
% change over previous period										
GDP growth (at constant prices)	8.8%	0.7%	2.8%	4.8%	2.1%	3.0%	4.0%	2.3%	-6.7%	6.6%
GDP deflator	1.3%	0.5%	-0.2%	-0.2%	-0.5%	1.2%	2.0%	2.6%	2.2%	1.3%
Harmonised index of consumer prices	3.7%	1.5%	-0.1%	-0.3%	-0.5%	1.4%	2.5%	2.8%	1.9%	1.1%
Exports (goods and services)	9.1%	6.0%	3.7%	6.6%	5.0%	3.5%	5.4%	1.7%	-12.4%	13.4%
Imports (goods and services)	2.1%	5.6%	4.5%	8.5%	4.8%	3.9%	5.0%	2.6%	-12.6%	13.3%
Net exports of goods and services (million EUR)	4 056	4 166	3 674	2 453	2 390	1 850	1 817	968	1 158	1 420
% of total employment										
Unemployment rate	14.0	14.2	13.2	11.5	9.7	8.1	6.5	5.8	8.8	7.1
% of GDP										
Current account balance	0.9	1.9	1.1	-2.1	-2.7	-1.9	-2.6	-2.9	-3.1	-2.7
General government balance	-4.4	-2.9	-3.1	-2.7	-2.5	-1.0	-1.0	-1.3	-8.5	-4.2
General government gross debt	51.8	54.7	53.5	51.9	52.0	51.3	49.4	48.0	59.5	59.9

Source: European Commission, Eurostat and Directorate General for Economic and Financial Affairs

Updated: June 2020

Data for 2020 and 2021 are forecasts

3.1. AGRICULTURE: FINANCIAL ASPECTS

CAP expenditure

Measures	2019	2019	
	1 000 EUR	% of total	% of heading
Decoupled direct aids	382 163	56.9%	85.9%
Other direct aids	57 252	8.5%	12.9%
Additional amounts of aid	0	0.0%	0.0%
Reimbursement of direct aids in relation to financial discipline	5 683	0.8%	1.3%
Direct payments	445 097	66.3%	100.0%
Olive oil	0	0.0%	0.0%
Textile plants	0	0.0%	0.0%
Fruit and vegetables	2 358	0.4%	21.1%
Wine sector	5 076	0.8%	45.4%
Promotion	0	0.0%	0.0%
Other plant products/measures	0	0.0%	0.0%
Milk and milk products	-113	0.0%	-1.0%
Beef and veal	0	0.0%	0.0%
Sheepmeat and goatmeat	0	0.0%	0.0%
Pigmeat, eggs, poultry and other	584	0.1%	5.2%
School schemes*	3 282	0.5%	29.3%
Market measures	11 187	1.7%	100%
Rural development	214 844	32.0%	100%
TOTAL	671 129	100.0%	

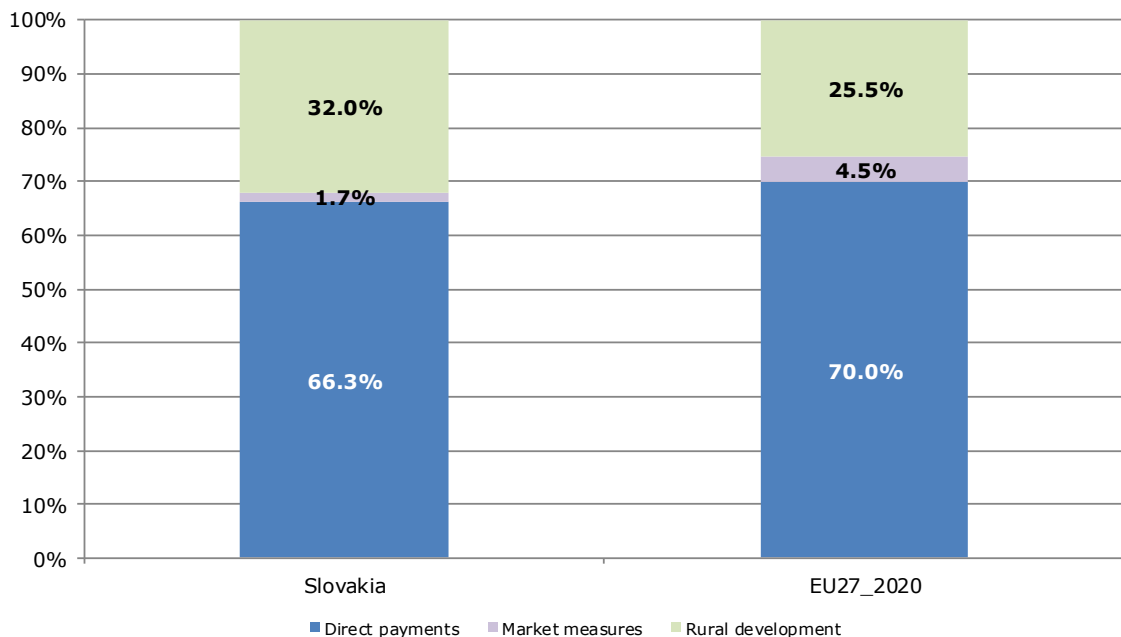
Note: Expenditure in commitments for direct payments and market measures; ceilings of support for rural development.

* Programme implementation based on school years; reimbursement possible in the next financial year

Source: European Commission, Directorate General for Agriculture and Rural Development

Updated: June 2020

Distribution of CAP expenditure



3.2. AGRICULTURE: FINANCIAL ASPECTS

Distribution of direct aids to the producers

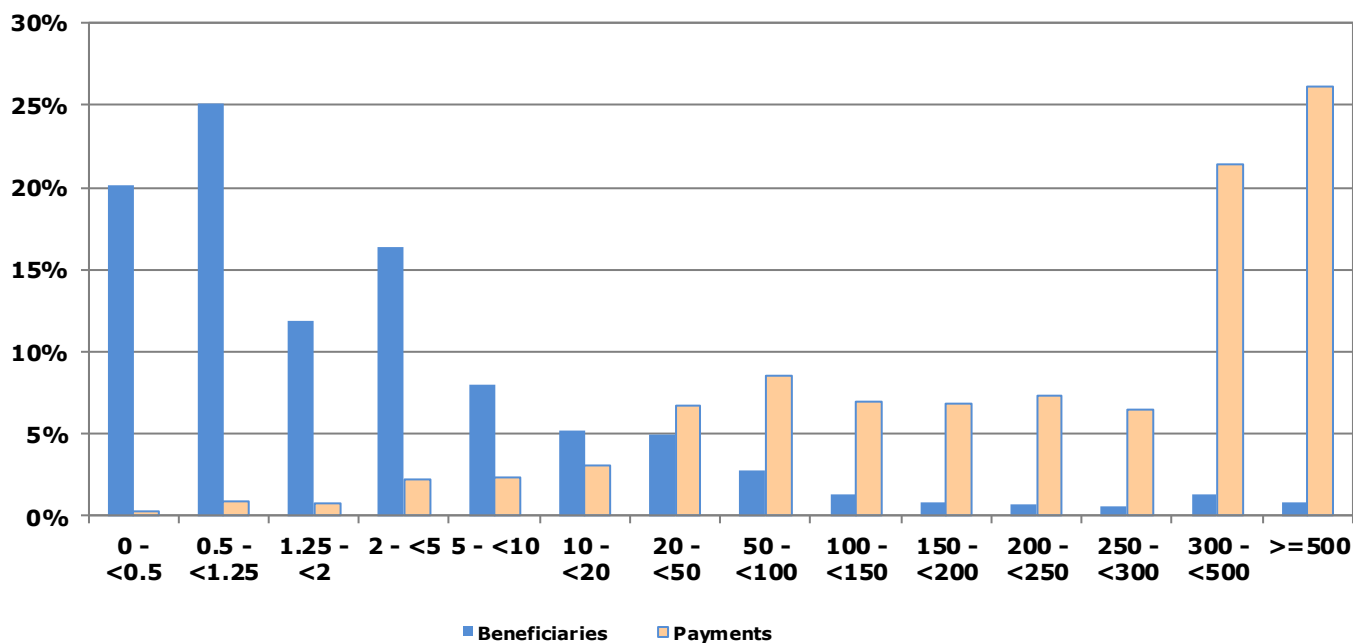
Size-class of aid (all direct payments)	Financial year 2018*			
	Beneficiaries		Payments in EUR	
	x 1 000	% of total	x 1 000	% of total
< 0 €	-	0.00%	0	0.0%
≥ 0 and < 500 €	3.77	20.08%	1 207	0.3%
≥ 500 and < 1 250 €	4.72	25.14%	3 866	0.9%
≥ 1 250 and < 2 000 €	2.22	11.84%	3 531	0.8%
≥ 2 000 and < 5 000 €	3.08	16.42%	9 625	2.2%
≥ 5 000 and < 10 000 €	1.49	7.95%	10 557	2.4%
≥ 10 000 and < 20 000 €	0.97	5.16%	13 632	3.1%
≥ 20 000 and < 50 000 €	0.93	4.94%	29 456	6.7%
≥ 50 000 and < 100 000 €	0.53	2.81%	37 552	8.6%
≥ 100 000 and < 150 000 €	0.25	1.31%	30 321	6.9%
≥ 150 000 and < 200 000 €	0.17	0.91%	29 978	6.8%
≥ 200 000 and < 250 000 €	0.14	0.76%	32 088	7.3%
≥ 250 000 and < 300 000 €	0.11	0.56%	28 656	6.5%
≥ 300 000 and < 500 000 €	0.25	1.31%	93 648	21.4%
≥ 500 000 €	0.16	0.83%	114 330	26.1%
Total	18.77	100%	438 447	100%

Source: European Commission, Directorate General for Agriculture and Rural Development.

* Figures for financial year 2019 will become available during the second half of 2020.

Note: In order to protect the anonymity of the beneficiaries, numbers less than 10 have been made invisible in this table.

Indicative figures on the distribution of direct aid by size-class of aid (1 000 EUR)



4.1. AGRICULTURE: ECONOMIC ACCOUNTS

Agricultural output

Output components (constant prices)	2017	2018	2019		
	Million EUR		Million EUR	% of total	% of EU27_2020
Cereals:	434	544	560	31.5%	1.3%
Wheat and spelt	225	263	287	16%	1.4%
Rye and meslin	4	5	7	0%	0.6%
Barley	69	71	82	5%	1.1%
Oats and summer cereal mixtures	5	4	4	0%	0.4%
Grain maize	128	196	176	10%	1.9%
Rice	0	0	0	0%	0.0%
Other cereals	3	5	5	0%	0.3%
Industrial crops:	315	296	276	15.5%	1.7%
Oil seeds and oleaginous fruits	265	252	225	13%	2.7%
Protein crops	5	4	3	0%	0.3%
Raw tobacco	0	0	0	0%	0.0%
Sugar beet	38	39	40	2%	1.7%
Other industrial crops	7	1	7	0%	0.2%
Forage plants	204	159	114	6.4%	0.5%
Vegetables and horticultural products	177	79	76	4.3%	0.1%
Potatoes	30	37	52	2.9%	0.4%
Fruits	43	47	34	1.9%	0.1%
Wine	0	0	0	0%	0.0%
Olive oil	0	0	0	0%	0.0%
Other crop products	24	6	1	0%	0.0%
Crop output	1 226	1 167	1 113	62.5%	0.6%
Animals:	391	356	307	17.2%	0.4%
Cattle	113	120	99	5.5%	0.4%
Pigs	141	118	106	6.0%	0.3%
Equines	0	0	0	0.0%	0.0%
Sheep and goats	12	12	9	0.5%	0.2%
Poultry	103	100	87	4.9%	0.5%
Other animals	21	6	6	0.3%	0.3%
Animal products:	437	379	360	20.2%	0.6%
Milk	276	263	256	14.4%	0.5%
Eggs	98	94	81	4.6%	1.0%
Other animal products	63	23	23	1.3%	0.9%
Animal output	828	735	667	37.5%	0.5%
Agricultural goods output	2 054	1 903	1 780	100.0%	0.5%

Updated: June 2020

Note: 2019 data are estimates and may still change.

Source: Eurostat, Economic Accounts for Agriculture (values at real producer prices).

4.2. AGRICULTURE: ECONOMIC ACCOUNTS

Agricultural input

Input components	2017	2018	2019	2018/2017	2019/2018
	Million EUR			% Change	
Seeds and planting stock	99.7	95.6	94.1	-4.1%	-1.5%
Energy	185.3	257.2	238.3	38.8%	-7.4%
Fertilisers and soil improvers	127.2	122.6	124.1	-3.6%	1.3%
Plant protection products	124.6	124.2	121.5	-0.4%	-2.1%
Veterinary expenses	41.0	42.8	39.8	4.2%	-7.0%
Feedingstuffs	443.0	417.6	375.0	-5.7%	-10.2%
Maintenance of materials	27.7	27.3	27.7	-1.7%	1.7%
Maintenance of buildings	50.8	50.3	50.5	-1.1%	0.5%
Agricultural services	129.9	135.9	138.7	4.7%	2.0%
Other goods and services	430.4	391.8	384.9	-9.0%	-1.8%
Total intermediate consumption	1 675.1	1 677.6	1 606.8	0.2%	-4.2%
Fixed capital consumption	229.0	180.5	194.3	-21.2%	7.6%

Note: 2019 data are estimates and may still change.

Source: Eurostat, Economic Accounts for Agriculture: values at real basic prices (2010 = 100)

Updated: June 2020

Agricultural income

Values at basic prices	2017	2018	2019	2018/2017	2019/2018
	Million EUR			% Change	
Output of the agricultural "industry":	2 303.0	2 188.5	2 073.9	-5.0%	-5.2%
Crop output	1 226.0	1 167.4	1 113.0	-4.8%	-4.7%
Animal output:	828.4	735.3	667.0	-11.2%	-9.3%
<i>Animals</i>	391.2	355.9	306.9	-9.0%	-13.8%
<i>Animal products</i>	437.2	379.4	360.1	-13.2%	-5.1%
Agricultural services	129.9	135.9	138.7	4.7%	2.0%
Secondary activities	118.7	149.9	155.2	26.3%	3.6%
- Intermediate consumption	1 675.1	1 677.6	1 606.8	0.2%	-4.2%
= Gross value added at basic prices	627.9	510.9	467.1	-18.6%	-8.6%
- Consumption of fixed capital	229.0	180.5	194.3	-21.2%	7.6%
- Taxes	49.4	49.5	47.0	0.2%	-5.0%
+ Subsidies	487.3	519.6	552.3	6.6%	6.3%
= Factor income	836.7	800.5	778.1	-4.3%	-2.8%

Agricultural income* (2010=100)	205.7	201.5	185.3	-2.0%	-8.1%
--	--------------	--------------	--------------	--------------	--------------

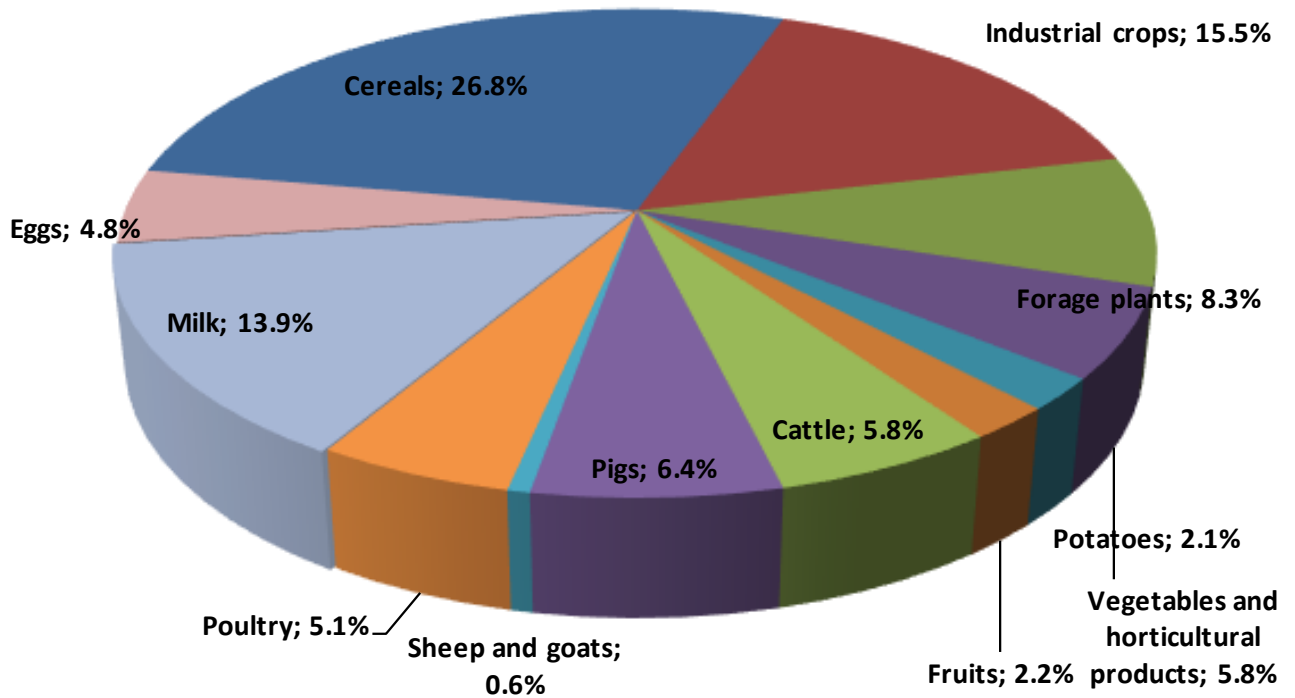
Note: 2019 data are estimates and may still change.

Source: Eurostat, Economic Accounts for Agriculture (values at real prices; constant prices for "Indicator A - see definition at the end of this document).

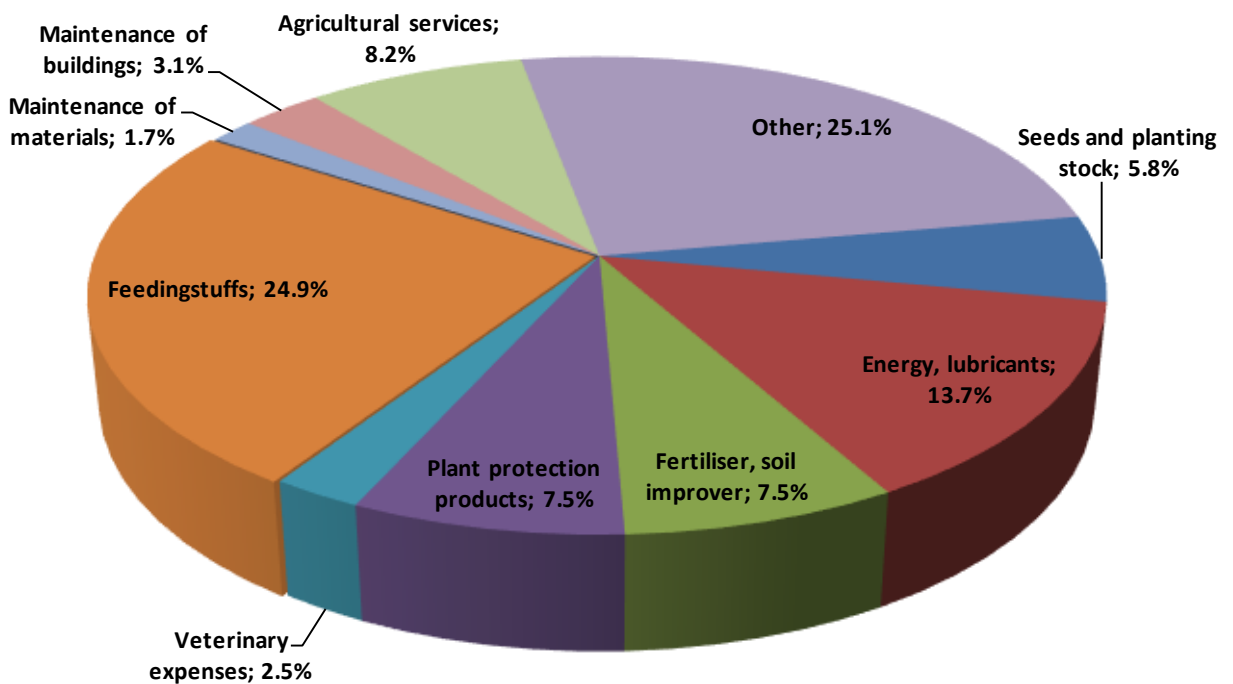
Updated: June 2020

4.3. AGRICULTURE: ECONOMIC ACCOUNTS

Output components (2017-2019 average)

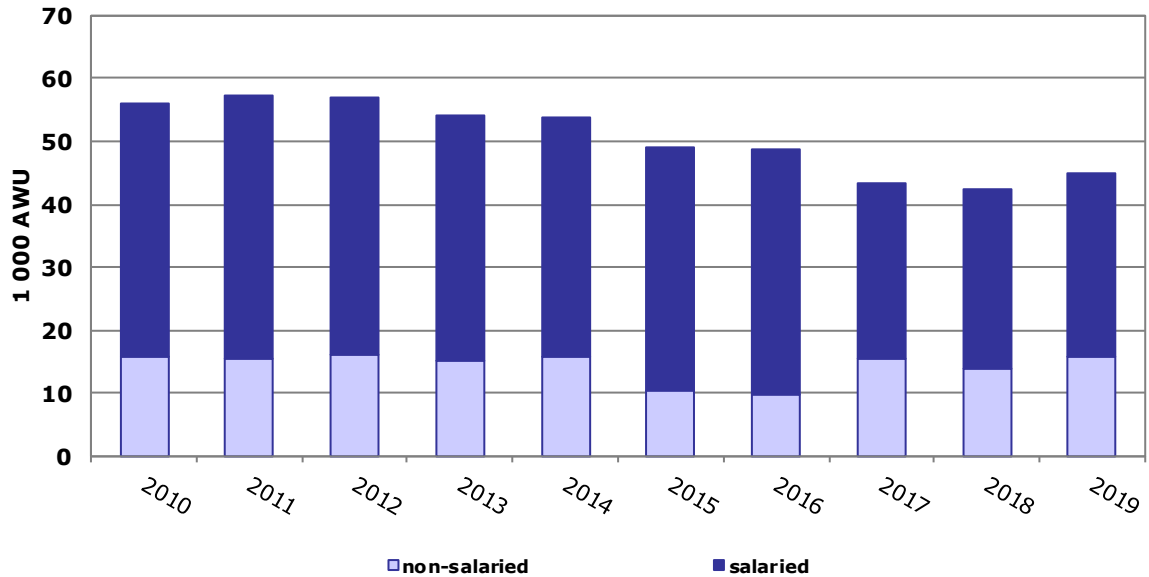


Intermediate consumption (2017-2019 average)



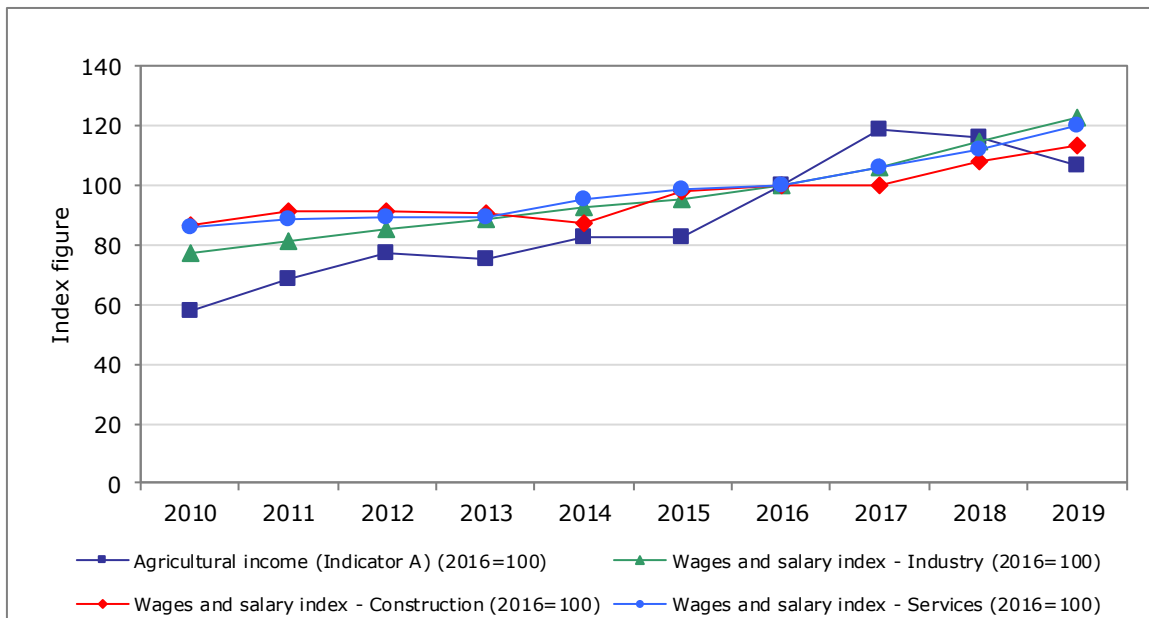
4.4. AGRICULTURE: ECONOMIC ACCOUNTS

Evolution of agricultural labour input



Source: Eurostat Updated: June 2020

Evolution of agricultural income (*) compared to wages and salaries in other sectors of the economy

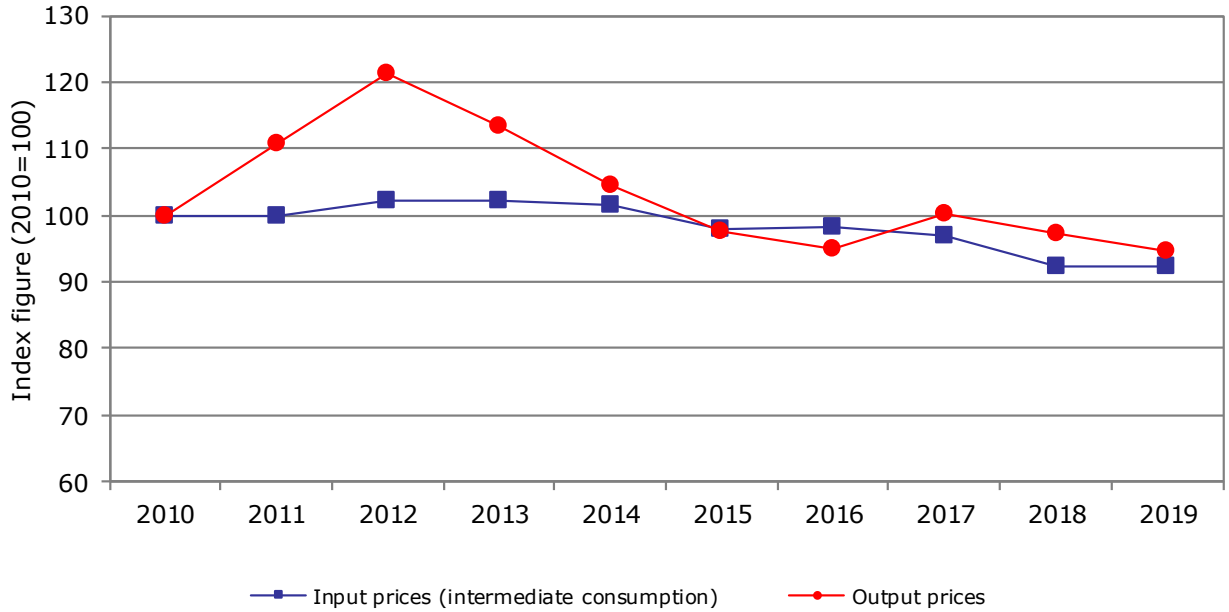


Source: Eurostat Updated: June 2020

(*) The so-called indicator A is the real net value added at factor cost of agriculture per annual work unit (AWU). The net value added at factor cost (factor income) is calculated by subtracting the consumption of fixed capital from gross value added at basic prices and adding the value of subsidies less taxes. The AWU is defined as the work volume corresponding to one full-time employed worked.

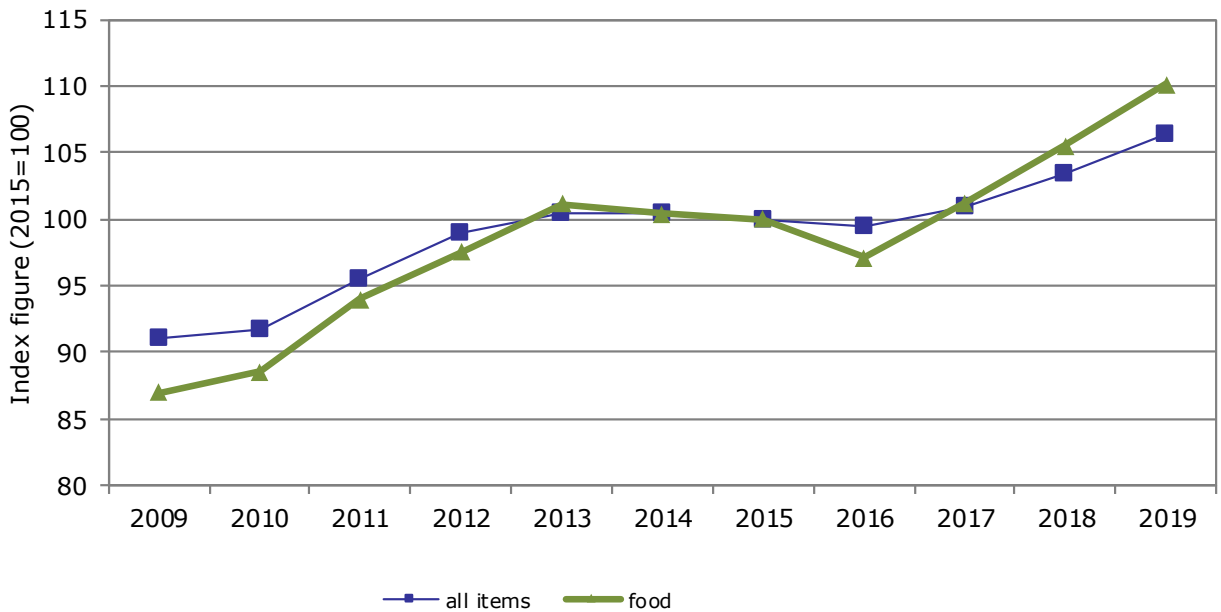
4.5. AGRICULTURE: ECONOMIC ACCOUNTS

Evolution of agricultural input and output prices



Source: Eurostat Updated: June 2020

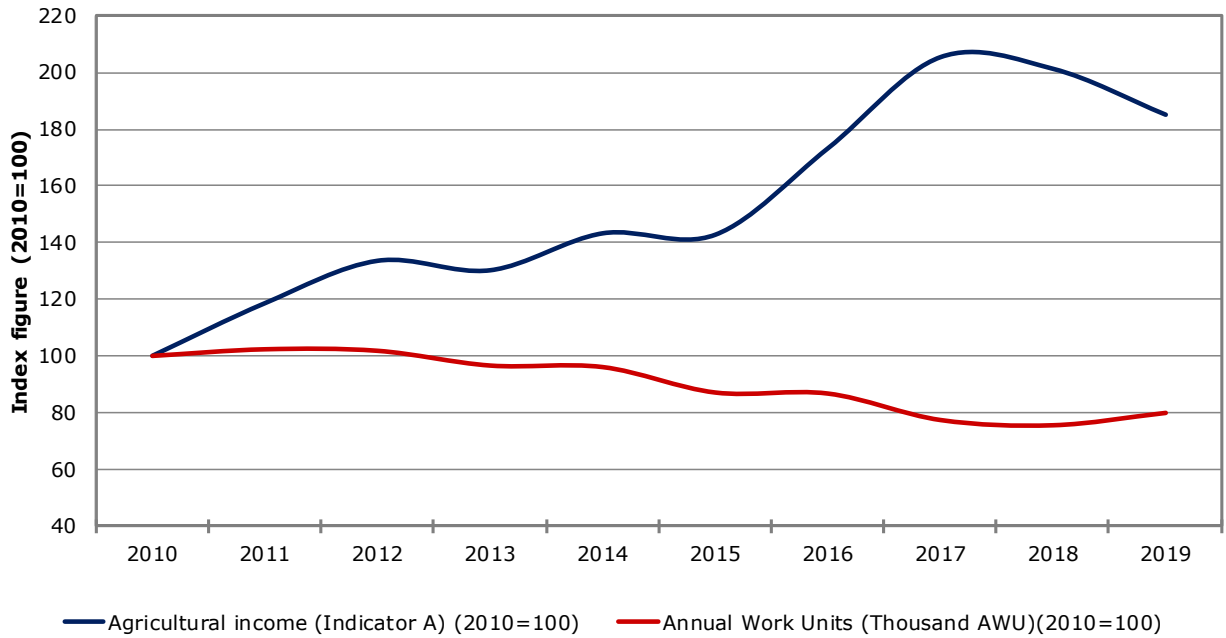
Evolution of harmonised indices of consumer prices



Source: Eurostat Updated: June 2020

4.6. AGRICULTURE: ECONOMIC ACCOUNTS

Farmers' income and labour development index (real terms)

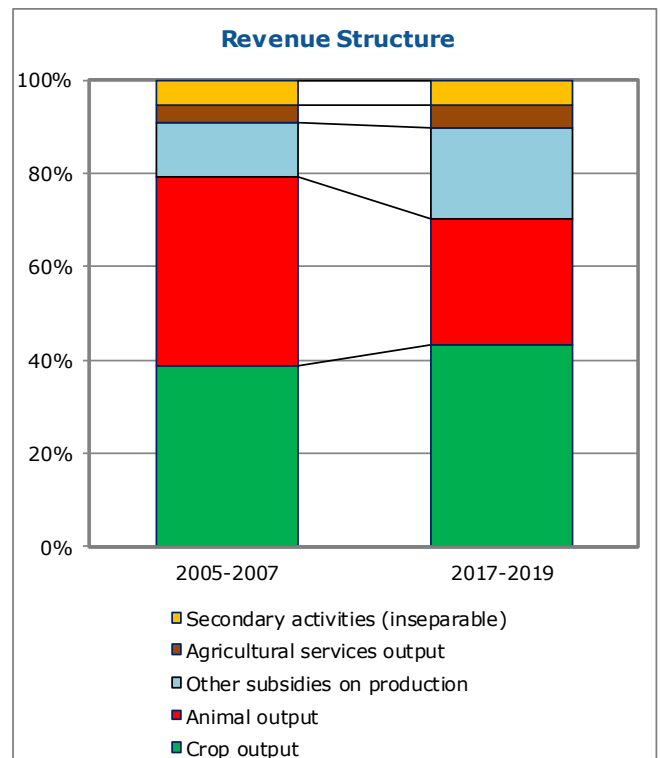
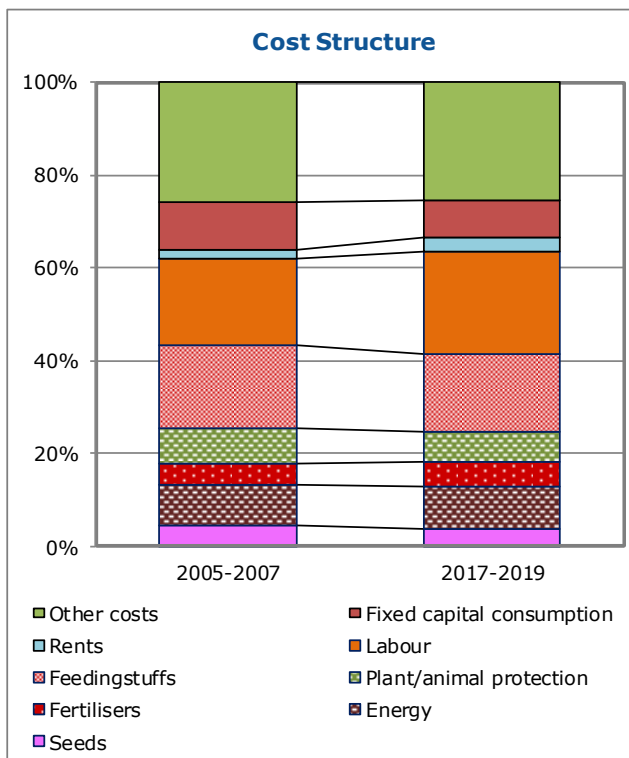
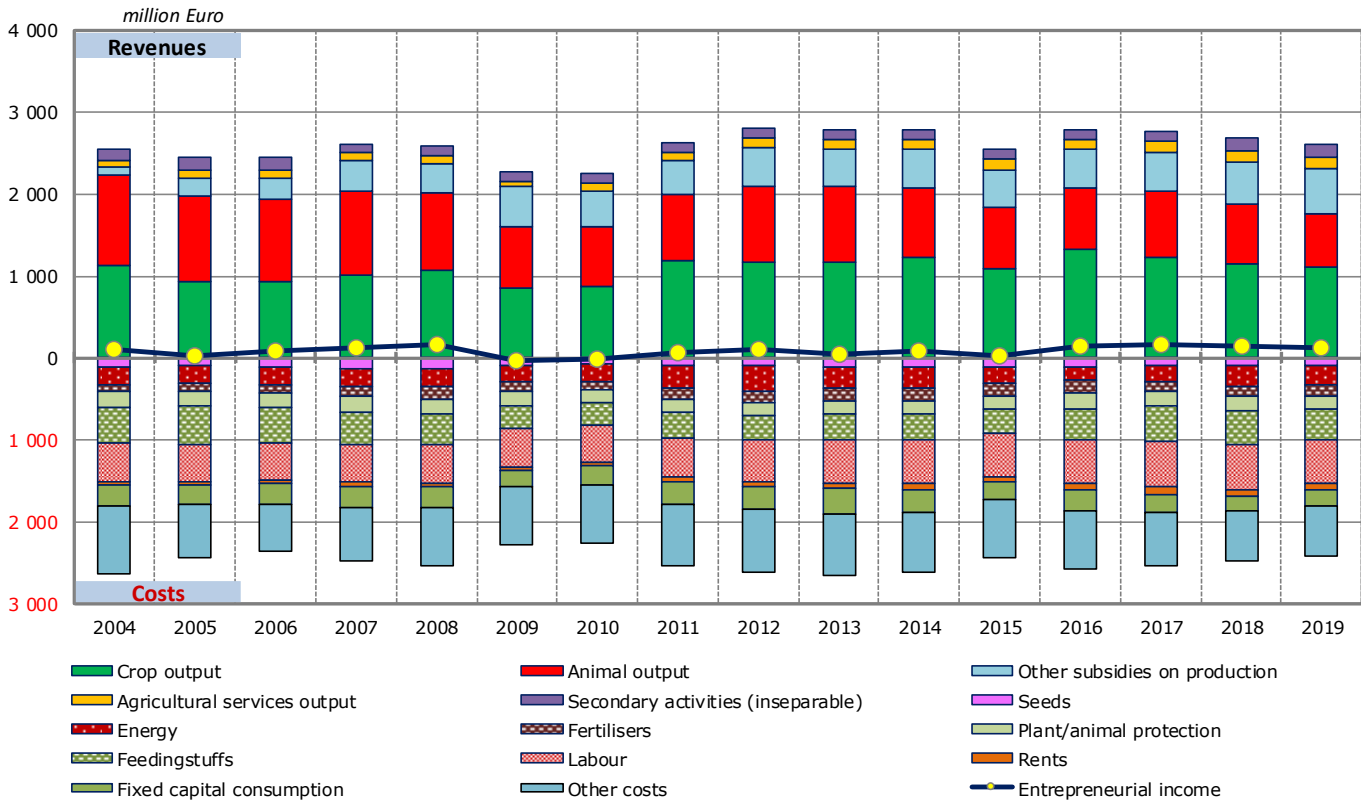


Source: Eurostat and DG Agriculture and Rural Development

Updated: June 2020

4.7. AGRICULTURE: ECONOMIC ACCOUNTS

Agricultural income (real prices)



5.1. AGRICULTURAL TRADE

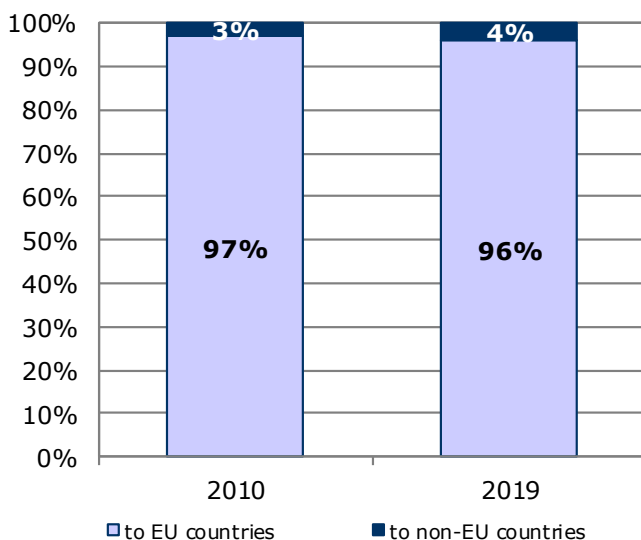
Agricultural trade in 2019

By category of product	Total trade	Trade with EU countries		Trade with non-EU countries	
	Million EUR	Million EUR	% change 2019/2018	Million EUR	% change 2019/2018
Exports					
Commodities	915.3	888.9	-1.7%	26.4	18.92%
Other primary products	583.7	549.7	0.8%	33.9	-7.66%
Processed products	481.9	470.9	-2.3%	11.0	34.59%
Food preparations	723.4	686.1	10.6%	37.2	6.77%
Beverages	77.0	70.2	6.9%	6.8	1.19%
Non edible	125.7	122.3	-1.3%	2.1	-76.72%
Total agricultural products	2 907.0	2 788.1	1.7%	117.5	-0.22%
as % of total exports	3.6%	4.1%		1.0%	
Imports					
Commodities	634.0	612.7	-1.5%	21.3	20.6%
Other primary products	1 436.2	1 399.0	9.6%	37.1	-29.2%
Processed products	797.8	783.6	1.6%	14.1	-7.4%
Food preparations	1 119.8	1 096.6	7.7%	23.3	5.7%
Beverages	350.4	341.6	4.1%	8.8	-11.6%
Non edible	397.3	373.3	-12.4%	9.4	-20.7%
Total agricultural products	4 735.4	4 606.8	3.7%	114.0	-11.72%
as % of total imports	5.9%	7.1%		0.7%	
Balance					
Commodities	281.3	276.2		5.1	
Other primary products	-852.5	-849.3		-3.2	
Processed products	-315.8	-312.7		-3.1	
Food preparations	-396.4	-410.4		14.0	
Beverages	-273.4	-271.4		-2.0	
Non edible	-271.6	-251.0		-7.3	
Total agricultural products	-1 828.4	-1 818.6		3.5	

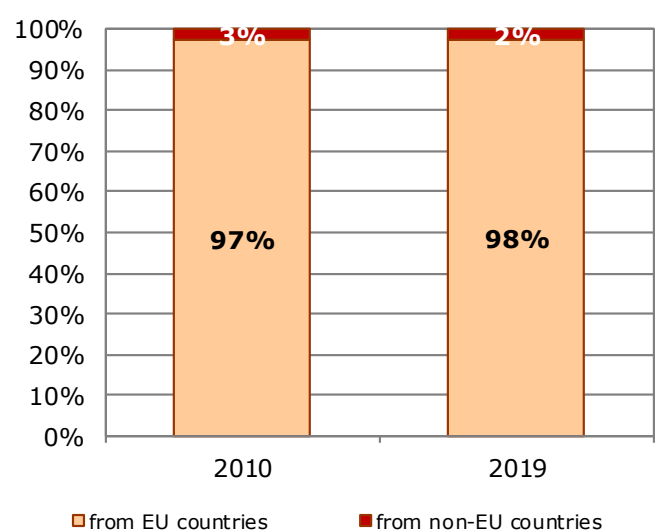
Source: Directorate General for Agriculture and Rural Development, based on COMEXT data

Updated: June 2020

Exports of agricultural products

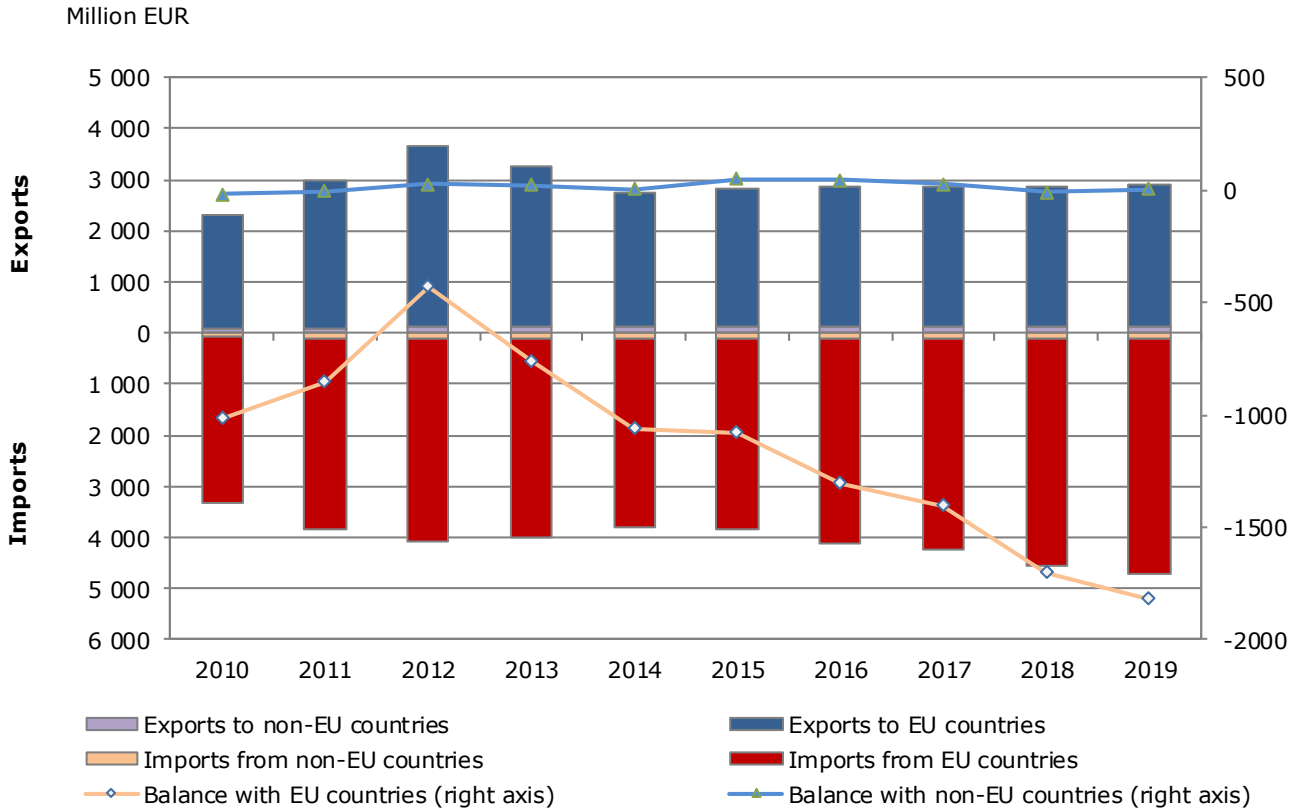


Imports of agricultural products

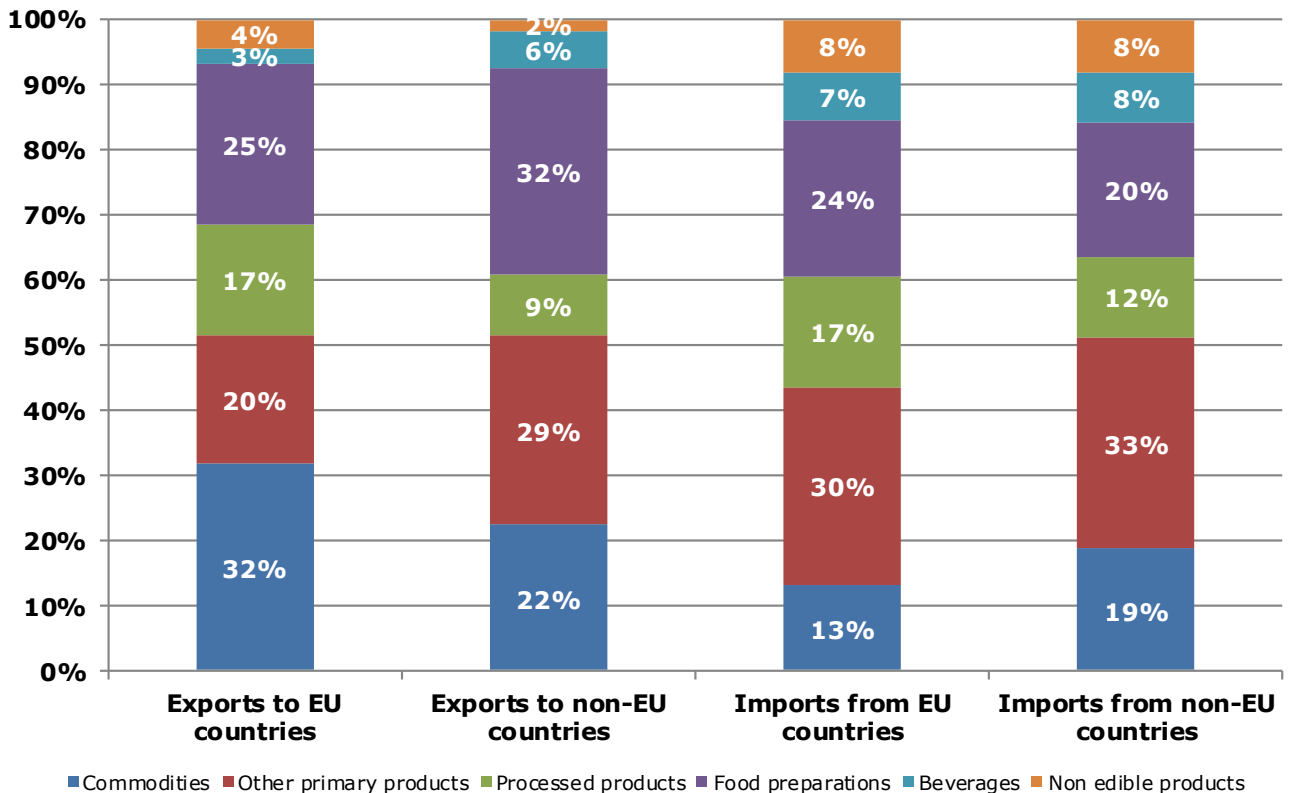


5.2. AGRICULTURAL TRADE

Evolution of agricultural trade with EU and non-EU countries



Structure of agricultural exports and imports



6.1. FARM STRUCTURE

Structure of agricultural holdings

Holdings		2010		2016	
		Total	%	Total	%
By UAA (*)	< 5 ha	15 750	64.4%	14 290	55.7%
	5-10 ha	2 660	10.9%	3 570	13.9%
	10-20 ha	1 630	6.7%	2 540	9.9%
	20-30 ha	730	3.0%	1 000	3.9%
	30-50 ha	700	2.9%	920	3.6%
	50-100 ha	780	3.2%	940	3.7%
	> 100 ha	2 210	9.0%	2 400	9.4%
By economic size (**)	< 4 000 €	14 550	59.5%	12 570	49.0%
	< 8 000 €	3 940	16.1%	4 950	19.3%
	< 15 000 €	1 710	7.0%	2 640	10.3%
	< 25 000 €	890	3.6%	1 340	5.2%
	< 50 000 €	860	3.5%	1 200	4.7%
	< 100 000 €	670	2.7%	800	3.1%
	< 250 000 €	660	2.7%	820	3.2%
	< 500 000 €	370	1.5%	450	1.8%
=/> 500 000 €	810	3.3%	880	3.4%	
By LSU (***)	0	6 140	25.1%	9 620	37.5%
	0-5	14 950	61.1%	11 780	45.9%
	5-10	1 080	4.4%	1 400	5.5%
	10-15	340	1.4%	580	2.3%
	15-20	210	0.9%	290	1.1%
	20-50	510	2.1%	730	2.8%
	50-100	290	1.2%	340	1.3%
	100-500	640	2.6%	660	2.6%
> 500	320	1.3%	250	1.0%	
By age of holder	< 35 years	1 730	7.1%	2 840	11.1%
	35-44 years	3 640	14.9%	4 810	18.7%
	45-54 years	6 610	27.0%	6 020	23.5%
	55-64 years	6 920	28.3%	6 760	26.3%
	> 64 years	5 560	22.7%	5 220	20.3%
	not applicable	:	:	:	:
Total		24 460	100%	25 650	100%
UAA in 1 000 ha		:		1 890	
UAA (ha) per holding		#N/A		73.6	

Source: Eurostat, Farm Structure Survey

Updated: June 2020

(*) UAA = Utilised agricultural area.

(**) Economic size: The standard output of an agricultural product (crop or livestock), abbreviated as SO, is the average monetary value of the agricultural output at farm-gate price, in euro per hectare or per head of livestock. There is a regional SO coefficient for each product, as an average value over a reference period (5 years, except for the SO 2004 coefficient calculated using the average of 3 years). The sum of all the SO per hectare of crop and per head of livestock in a farm is a measure of its overall [economic size](#), expressed in euro.

(***) LSU = Livestock units. A LSU is equivalent to a dairy cow. The number of animals (heads) is converted into LSU using a set of coefficients reflecting the feed requirements of the different animal categories.

6.2. FARM STRUCTURE

Structure of farm labour force

2016			
Family labour force		Non family labour force	
persons:	40 300	Data not available	
of which women:	34.3%		
AWUs (*):	13 590	AWUs:	32 010
Holders	Family members	Regular non family labour force	Non regular non family labour force
persons:	persons:	persons:	Data not available
22 460	17 840	38 880	
of which women:	of which women:	of which women:	
19.9%	52.5%	26.4%	
AWUs:	AWUs:	AWUs:	AWUs:
8 880	4 710	32 010	1 590
Total farm labour force (persons)		79 180	
Total farm labour force (AWUs)		47 190	

Source: Eurostat, Farm Structure Survey

Updated: June 2020

* AWUs = Annual work units. An AWU is equivalent to a worker employed on a full time basis for one year.

This document does not necessarily represent the official views of the European Commission
© European Union, 2020 - Reproduction authorised provided the source is acknowledged

Contact: DG Agriculture and Rural Development, Farm Economics Unit

Tel: +32-2-29 75471 / E-mail: Agri-C3@ec.europa.eu