



European
Commission

June 2020

Statistical Factsheet

Sweden



CONTENTS

Main figures	1
1. KEY DATA	2
2. POPULATION & ECONOMY	3
3. FINANCIAL ASPECTS	4-5
4. ECONOMIC ACCOUNTS	6-12
5. AGRICULTURAL TRADE	13-14
6. FARM STRUCTURE	15-16

Main figures - Year 2019

Population (1 st January)	10 230 185	persons
Area*	447 424	km ²
Currency	SEK	krona
Nominal GDP at current prices	474 684	million EUR
GDP per capita at current prices	46 180	EUR
GDP per capita at purchasing power	38 037	PPS
Harmonised index of consumer prices	1.7%	change over previous year
Unemployment rate	6.8	% of labour force
Exports (goods & services)	225 208	million EUR (current prices)
Imports (goods & services)	206 959	million EUR (current prices)
Balance (goods & services)	18 249	million EUR (current prices)
Exports of agricultural products	5 677	million EUR
Imports of agricultural products	11 855	million EUR
Current account balance	3.9	% of GDP
General government balance	0.5	% of GDP
General government gross debt	35.1	% of GDP

Sources: European Commission, Eurostat, and Directorate General for Economic and Financial Affairs.

Updated: June 2020

* Data refer to the year

2016

1. KEY DATA

Macroeconomics				
Population (new European Commission methodology)				
Total population (number of persons), of which:	2019	10 230 185	2.3%	of EU27_2020
in predominantly rural regions (PR)	2019	9.0%	20.5%	in EU27_2020
in intermediate regions	2019	51.4%	39.1%	in EU27_2020
in predominantly urban regions	2019	39.6%	40.4%	in EU27_2020
Population in PR regions (number of persons)	2019	921 276	1.0%	of EU27_2020
GDP				
In EUR (current prices):				
total (million EUR)	2019	474 684	3.4%	of EU27_2020
GDP per capita (EUR/person)	2019	46 180	31 094	in EU27_2020
GDP per capita (PPS/person)	2019	38 037	31 744	in EU27_2020
Real GDP growth rate (% change over previous year)	2019	1.2%	1.5%	in EU27_2020
Gross value added				
Agriculture, forestry and fishing (% of total GVA)	2019	1.6%	1.8%	in EU27_2020
Financial aspects				
Agricultural expenditure				
Total expenditure (million EUR), of which:	2019	950.1	1.7%	of EU27_2020
Direct payments (%)	2019	72.4%	70.0%	in EU27_2020
Market measures (%)	2019	1.3%	4.5%	in EU27_2020
Rural development (%)	2019	26.3%	25.5%	in EU27_2020
Economic accounts of agriculture				
Agricultural output				
Agricultural goods output (million EUR), of which:	2019	5 791.9	1.5%	of EU27_2020
Crop output, of which:		48.0%	1.3%	of EU27_2020
Cereals (including seeds)		13.1%	1.6%	of EU27_2020
Industrial crops		3.7%	1.2%	of EU27_2020
Forage plants		17.6%	4.3%	of EU27_2020
Vegetables and horticultural products		8.7%	0.9%	of EU27_2020
Potatoes		3.2%	1.3%	of EU27_2020
Fruits		1.5%	0.3%	of EU27_2020
Wine		0.0%	0.0%	of EU27_2020
Olive oil		0.0%	0.0%	of EU27_2020
Animal output, of which:		45.4%	1.6%	of EU27_2020
Cattle		10.4%	2.2%	of EU27_2020
Pigs		7.1%	1.0%	of EU27_2020
Sheep and goats		0.4%	0.6%	of EU27_2020
Poultry		3.6%	1.1%	of EU27_2020
Milk		17.4%	1.9%	of EU27_2020
Eggs		3.6%	2.3%	of EU27_2020
Gross value added at basic prices (million EUR)	2019	1 682.6	1.0%	of EU27_2020
Agricultural input				
Total intermediate consumption (million EUR)	2019	4 393.2	1.9%	of EU27_2020
Agricultural income				
Indicator A (% change over previous year)	2019	29.8%	2.4%	in EU27_2020
Farm structure				
Holdings				
Total (No), of which:	2016	62 940	0.6%	of EU27_2020
UAA < 5 ha (%)	2016	10.5%	66.6%	in EU27_2020
Economic size < 4 000 €	2016	21.4%	54.9%	in EU27_2020
Holder < 35 years (%)	number	5.3%	5.1%	in EU27_2020
Holder > 64 years (%)	number	32.7%	32.8%	in EU27_2020
UAA per holding (ha)	Total	47.9	15.2	in EU27_2020
Labour force				
AWU (No)	2016	55 940	0.6%	of EU27_2020
Female farm holders (%)	2016	15.7%	30.7%	in EU27_2020
Male farm holders (%)	2016	84.3%	68.8%	in EU27_2020
Agriculture in % of total employment	2019	1.3%	4.1%	in EU27_2020

Sources: European Commission, Eurostat and Directorate General for Agriculture and Rural Development.

Updated: June 2020

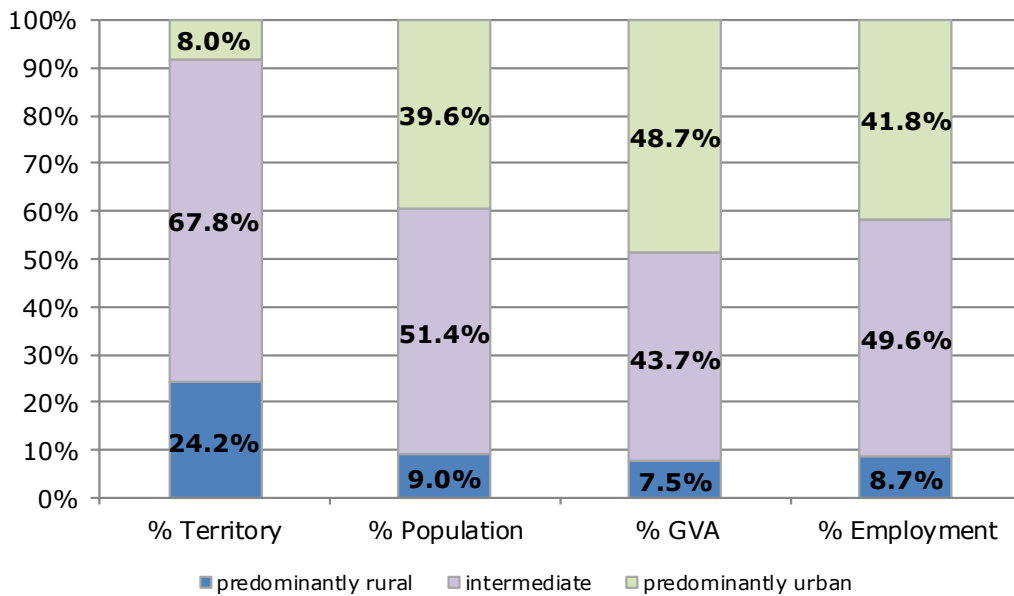
2. POPULATION AND ECONOMY

Importance of rural areas

	Territory (km ²)	Population (persons)	GVA (Million EUR)	Employment (persons)
Year	2016	2019	2016	2018
Predominantly Rural Regions	108 160	921 276	30 889	426 800
Intermediate Regions	303 333	5 254 971	179 043	2 439 700
Predominantly Urban Regions	35 931	4 053 938	199 355	2 054 800
Total	447 424	10 230 185	409 288	4 921 300

Source: Eurostat.

Updated: June 2020



Economic forecast

Indicators	2012	2013	2014	2015	2016	2017	2018	2019	2020	2021
GDP										
In million EUR (current prices)	428 827	440 189	437 540	454 186	466 348	479 606	471 209	474 684	439 544	461 751
Per capita (in PPS; current prices)	34 248	33 902	34 690	36 813	36 043	36 694	37 307	38 037	35 804	37 525
% change over previous period										
GDP growth (at constant prices)	11.2%	1.1%	2.7%	4.4%	2.4%	2.4%	2.2%	1.2%	-6.1%	4.3%
GDP deflator	4.8%	1.5%	-3.3%	-0.6%	0.3%	0.4%	-3.9%	-0.5%	-1.4%	0.7%
Harmonised index of consumer prices	0.9%	0.4%	0.2%	0.7%	1.1%	1.9%	2.0%	1.7%	0.4%	1.1%
Exports (goods and services)	1.1%	-1.1%	4.3%	6.3%	2.8%	4.3%	3.2%	4.2%	-12.0%	6.5%
Imports (goods and services)	0.8%	0.0%	6.1%	5.7%	3.8%	4.8%	3.6%	1.8%	-11.5%	5.1%
Net exports of goods and services (million EUR)	19 531	17 597	15 173	18 252	17 059	15 387	11 784	18 249	14 649	18 581
% of total employment										
Unemployment rate	8.0	8.1	8.0	7.4	7.0	6.7	6.4	6.8	9.7	9.3
% of GDP										
Current account balance	5.5	5.2	4.5	4.1	3.5	3.1	1.8	3.9	3.3	3.6
General government balance	-1.0	-1.4	-1.5	0.0	1.0	1.4	0.8	0.5	-5.6	-2.2
General government gross debt	37.6	40.4	45.1	43.9	42.2	40.8	38.8	35.1	42.6	42.5

Source: European Commission, Eurostat and Directorate General for Economic and Financial Affairs

Updated: June 2020

Data for 2020 and 2021 are forecasts

3.1. AGRICULTURE: FINANCIAL ASPECTS

CAP expenditure

Measures	2019	2019	
	1 000 EUR	% of total	% of heading
Decoupled direct aids	589 385	62.0%	85.7%
Other direct aids	90 227	9.5%	13.1%
Additional amounts of aid	0	0.0%	0.0%
Reimbursement of direct aids in relation to financial discipline	7 919	0.8%	1.2%
Direct payments	687 531	72.4%	100.0%
Olive oil	0	0.0%	0.0%
Textile plants	0	0.0%	0.0%
Fruit and vegetables	2 863	0.3%	22.3%
Wine sector	0	0.0%	0.0%
Promotion	0	0.0%	0.0%
Other plant products/measures	0	0.0%	0.0%
Milk and milk products	587	0.1%	4.6%
Beef and veal	0	0.0%	0.0%
Sheepmeat and goatmeat	0	0.0%	0.0%
Pigmeat, eggs, poultry and other	286	0.0%	2.2%
School schemes*	9 073	1.0%	70.8%
Market measures	12 809	1.3%	100%
Rural development	249 711	26.3%	100%
TOTAL	950 051	100.0%	

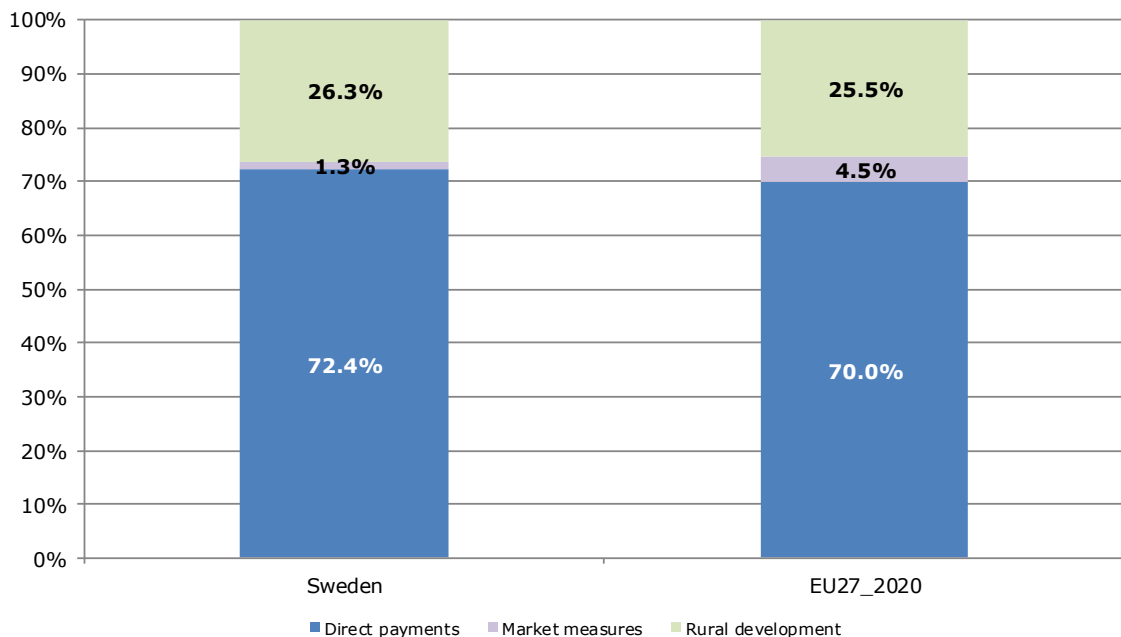
Note: Expenditure in commitments for direct payments and market measures; ceilings of support for rural development.

* Programme implementation based on school years; reimbursement possible in the next financial year

Source: European Commission, Directorate General for Agriculture and Rural Development

Updated: June 2020

Distribution of CAP expenditure



3.2. AGRICULTURE: FINANCIAL ASPECTS

Distribution of direct aids to the producers

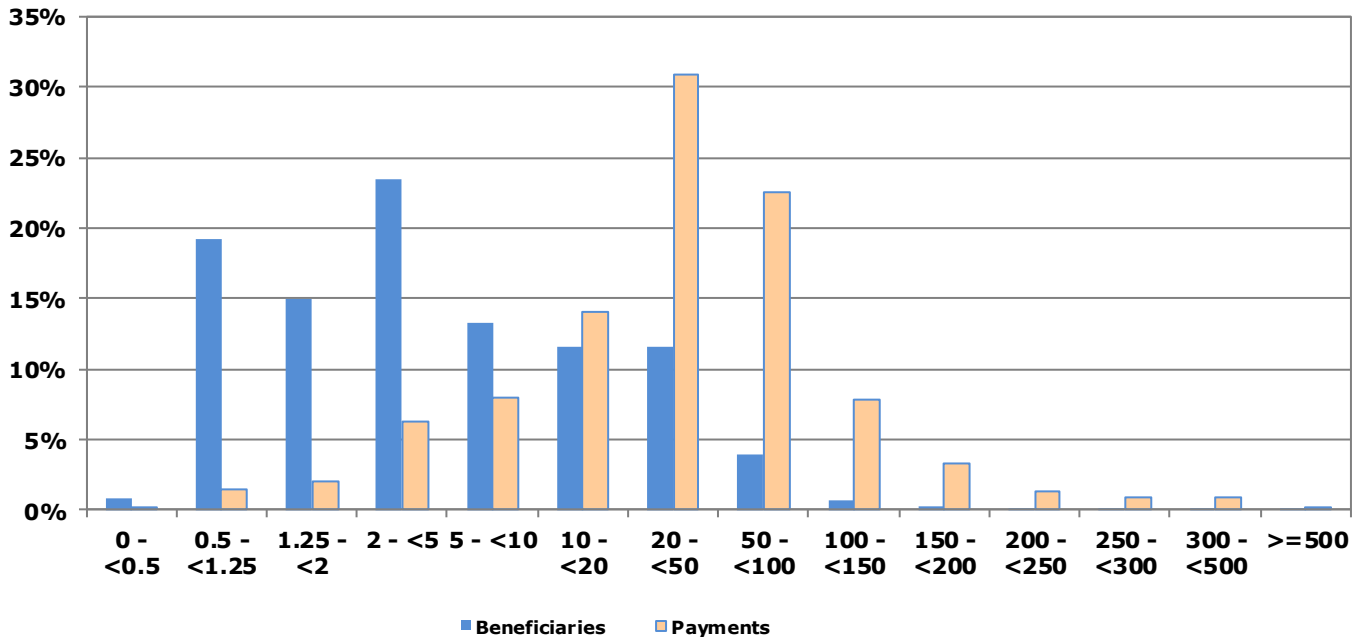
Size-class of aid (all direct payments)	Financial year 2018*			
	Beneficiaries		Payments in EUR	
	x 1 000	% of total	x 1 000	% of total
< 0 €	0.02	0.03%	- 1	0.0%
≥ 0 and < 500 €	0.46	0.79%	50	0.0%
≥ 500 and < 1 250 €	11.19	19.22%	10 377	1.5%
≥ 1 250 and < 2 000 €	8.74	15.01%	13 929	2.0%
≥ 2 000 and < 5 000 €	13.67	23.48%	43 502	6.3%
≥ 5 000 and < 10 000 €	7.72	13.27%	55 189	8.0%
≥ 10 000 and < 20 000 €	6.71	11.53%	96 097	14.0%
≥ 20 000 and < 50 000 €	6.75	11.59%	212 154	30.9%
≥ 50 000 and < 100 000 €	2.29	3.94%	154 661	22.6%
≥ 100 000 and < 150 000 €	0.45	0.77%	53 702	7.8%
≥ 150 000 and < 200 000 €	0.13	0.23%	22 442	3.3%
≥ 200 000 and < 250 000 €	0.04	0.07%	9 501	1.4%
≥ 250 000 and < 300 000 €	0.02	0.04%	5 967	0.9%
≥ 300 000 and < 500 000 €	0.02	0.03%	6 315	0.9%
≥ 500 000 €	0.00	0.01%	1 766	0.3%
Total	58.21	100%	685 651	100%

Source: European Commission, Directorate General for Agriculture and Rural Development.

* Figures for financial year 2019 will become available during the second half of 2020.

Note: In order to protect the anonymity of the beneficiaries, numbers less than 10 have been made invisible in this table.

Indicative figures on the distribution of direct aid by size-class of aid (1 000 EUR)



4.1. AGRICULTURE: ECONOMIC ACCOUNTS

Agricultural output

Output components (constant prices)	2017	2018	2019		
	Million EUR		Million EUR	% of total	% of EU27_2020
Cereals:	687	538	723	14.0%	1.7%
Wheat and spelt	395	271	423	8%	2.1%
Rye and meslin	16	15	24	0%	2.3%
Barley	193	180	178	3%	2.3%
Oats and summer cereal mixtures	65	61	75	1%	6.4%
Grain maize	1	1	2	0%	0.0%
Rice	0	0	0	0%	0.0%
Other cereals	17	11	20	0%	1.1%
Industrial crops:	200	136	205	4.0%	1.3%
Oil seeds and oleaginous fruits	112	72	127	2%	1.5%
Protein crops	34	19	23	0%	2.1%
Raw tobacco	0	0	0	0%	0.0%
Sugar beet	53	44	54	1%	2.2%
Other industrial crops	1	1	1	0%	0.0%
Forage plants	999	999	974	18.9%	4.6%
Vegetables and horticultural products	448	471	479	9.3%	0.9%
Potatoes	182	197	174	3.4%	1.4%
Fruits	82	88	85	1.7%	0.4%
Wine	0	0	0	0%	0.0%
Olive oil	0	0	0	0%	0.0%
Other crop products	12	10	11	0%	0.5%
Crop output	2 608	2 440	2 652	51.4%	1.4%
Animals:	1 354	1 318	1 306	25.3%	1.5%
Cattle	611	585	576	11.2%	2.3%
Pigs	415	411	394	7.6%	1.1%
Equines	50	51	50	1.0%	5.6%
Sheep and goats	27	28	23	0.5%	0.6%
Poultry	187	181	201	3.9%	1.1%
Other animals	64	63	62	1.2%	2.9%
Animal products:	1 258	1 200	1 202	23.3%	2.0%
Milk	1 033	966	959	18.6%	2.0%
Eggs	178	184	197	3.8%	2.4%
Other animal products	47	49	46	0.9%	1.9%
Animal output	2 612	2 518	2 508	48.6%	1.7%
Agricultural goods output	5 220	4 958	5 160	100.0%	1.5%

Updated: June 2020

Note: 2019 data are estimates and may still change.

Source: Eurostat, Economic Accounts for Agriculture (values at real producer prices).

4.2. AGRICULTURE: ECONOMIC ACCOUNTS

Agricultural input

Input components	2017	2018	2019	2018/2017	2019/2018
	Million EUR			% Change	
Seeds and planting stock	269.8	291.1	269.0	7.9%	-7.6%
Energy	388.9	428.8	433.4	10.3%	1.1%
Fertilisers and soil improvers	269.8	266.0	251.4	-1.4%	-5.5%
Plant protection products	104.8	88.7	89.8	-15.4%	1.3%
Veterinary expenses	32.8	29.8	30.8	-9.1%	3.3%
Feedingstuffs	1 238.9	1 398.9	1 325.2	12.9%	-5.3%
Maintenance of materials	286.1	286.0	295.7	0.0%	3.4%
Maintenance of buildings	87.6	74.7	74.6	-14.7%	-0.2%
Agricultural services	357.7	358.0	364.3	0.1%	1.7%
Other goods and services	1 009.4	946.8	992.3	-6.2%	4.8%
Total intermediate consumption	4 112.5	4 233.9	4 190.2	3.0%	-1.0%
Fixed capital consumption	988.9	1 020.6	1 033.5	3.2%	1.3%

Note: 2019 data are estimates and may still change.

Source: Eurostat, Economic Accounts for Agriculture: values at real basic prices (2010 = 100)

Updated: June 2020

Agricultural income

Values at basic prices	2017	2018	2019	2018/2017	2019/2018
	Million EUR			% Change	
Output of the agricultural "industry":	5 870.3	5 571.9	5 795.0	-5.1%	4.0%
Crop output	2 608.4	2 440.2	2 652.0	-6.5%	8.7%
Animal output:	2 611.9	2 518.1	2 508.0	-3.6%	-0.4%
<i>Animals</i>	1 354.0	1 318.3	1 306.2	-2.6%	-0.9%
<i>Animal products</i>	1 258.0	1 199.9	1 201.8	-4.6%	0.2%
Agricultural services	357.7	358.0	364.3	0.1%	1.7%
Secondary activities	292.3	255.6	270.8	-12.6%	5.9%
- Intermediate consumption	4 112.5	4 233.9	4 190.2	3.0%	-1.0%
= Gross value added at basic prices	1 757.8	1 338.0	1 604.8	-23.9%	19.9%
- Consumption of fixed capital	988.9	1 020.6	1 033.5	3.2%	1.3%
- Taxes	0.0	0.0	0.0	:	:
+ Subsidies	840.7	893.2	967.6	6.2%	8.3%
= Factor income	1 609.6	1 210.6	1 538.9	-24.8%	27.1%

Agricultural income* (2010=100)	115.8	88.9	115.4	-23.2%	29.8%
--	--------------	-------------	--------------	---------------	--------------

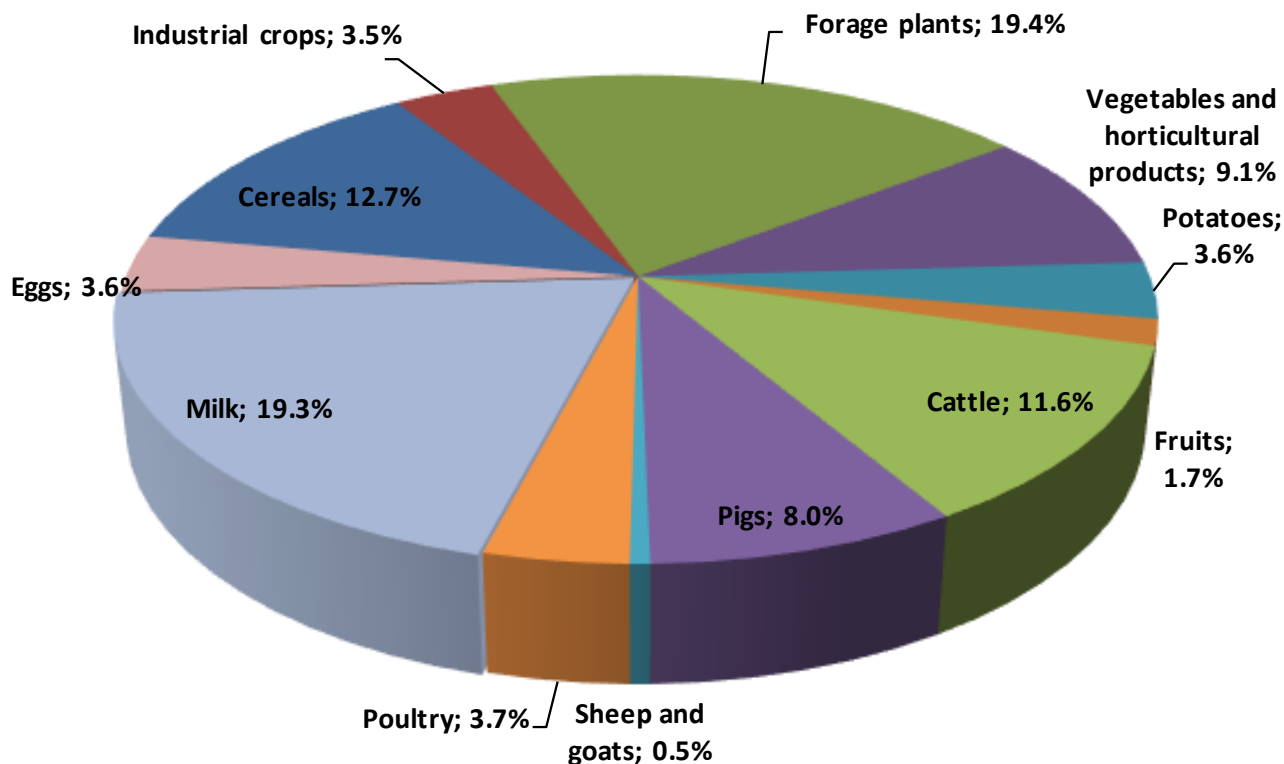
Note: 2019 data are estimates and may still change.

Source: Eurostat, Economic Accounts for Agriculture (values at real prices; constant prices for "Indicator A - see definition at the end of this document).

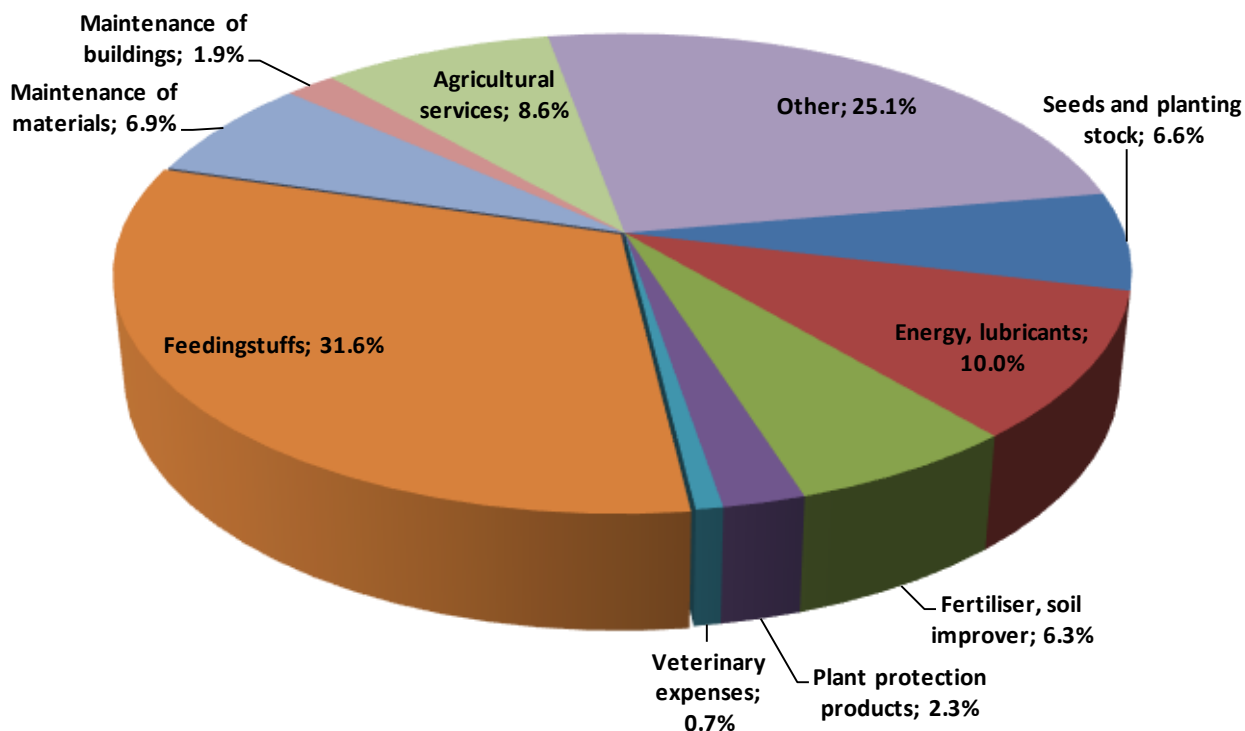
Updated: June 2020

4.3. AGRICULTURE: ECONOMIC ACCOUNTS

Output components (2017-2019 average)



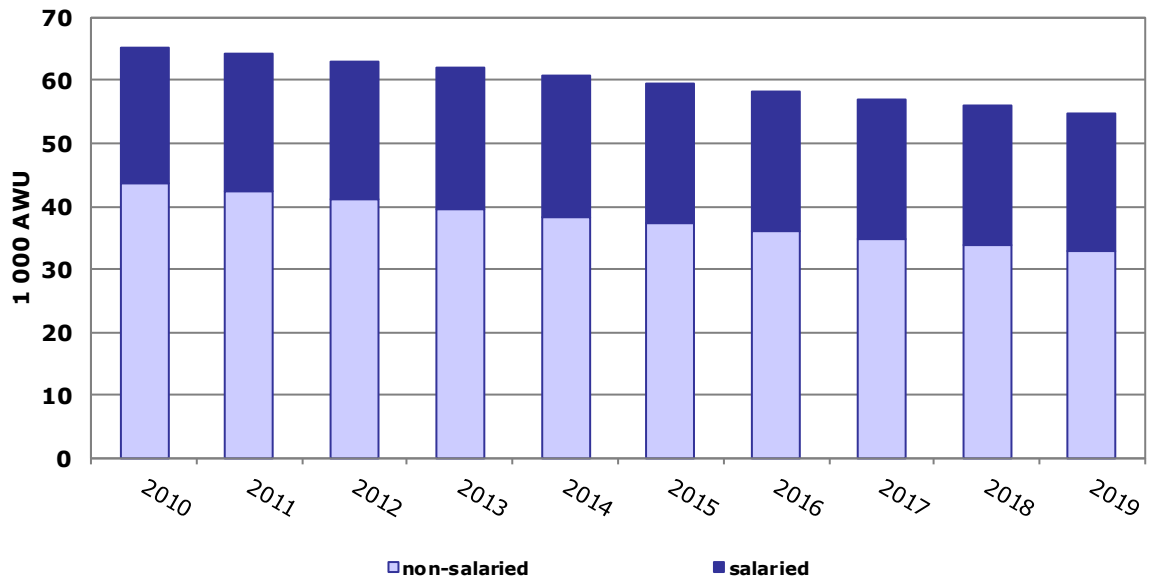
Intermediate consumption (2017-2019 average)



Source: Eurostat, Economic Accounts for Agriculture (values at real basic price)
Updated: June 2020

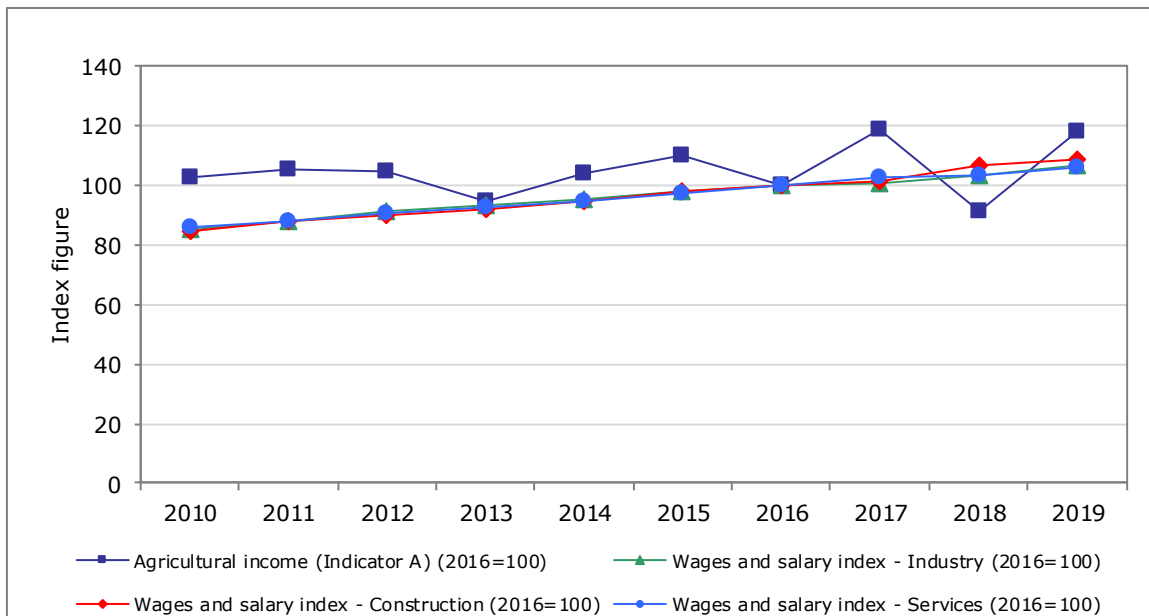
4.4. AGRICULTURE: ECONOMIC ACCOUNTS

Evolution of agricultural labour input



Source: Eurostat Updated: June 2020

Evolution of agricultural income (*) compared to wages and salaries in other sectors of the economy

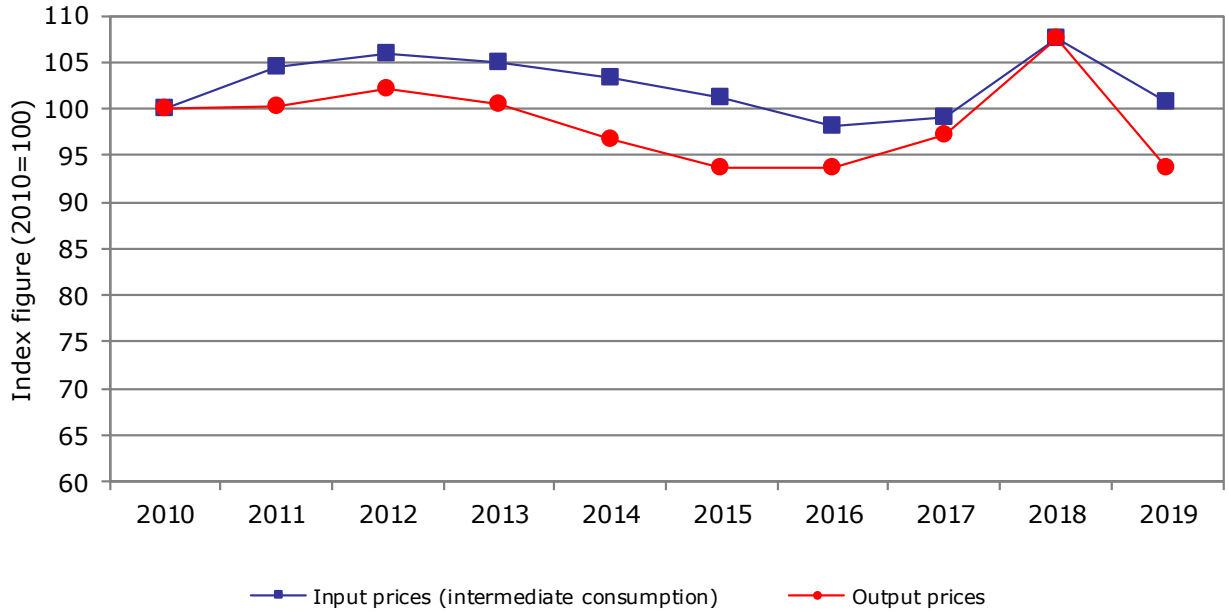


Source: Eurostat Updated: June 2020

(*) The so-called indicator A is the real net value added at factor cost of agriculture per annual work unit (AWU). The net value added at factor cost (factor income) is calculated by subtracting the consumption of fixed capital from gross value added at basic prices and adding the value of subsidies less taxes. The AWU is defined as the work volume corresponding to one full-time employed worked.

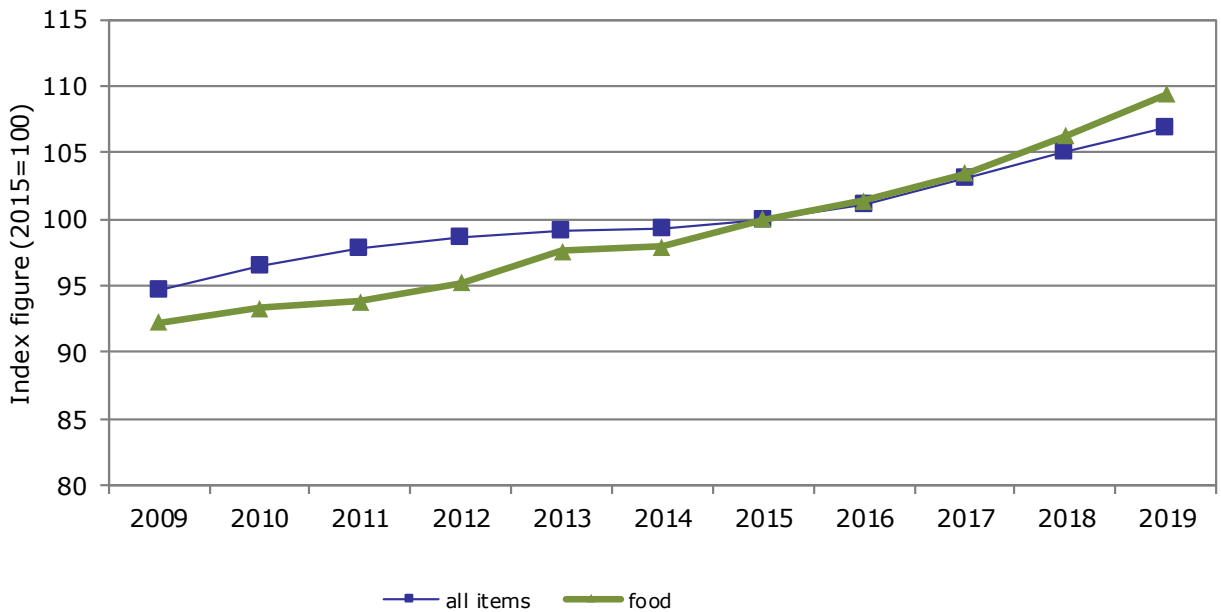
4.5. AGRICULTURE: ECONOMIC ACCOUNTS

Evolution of agricultural input and output prices



Source: Eurostat Updated: June 2020

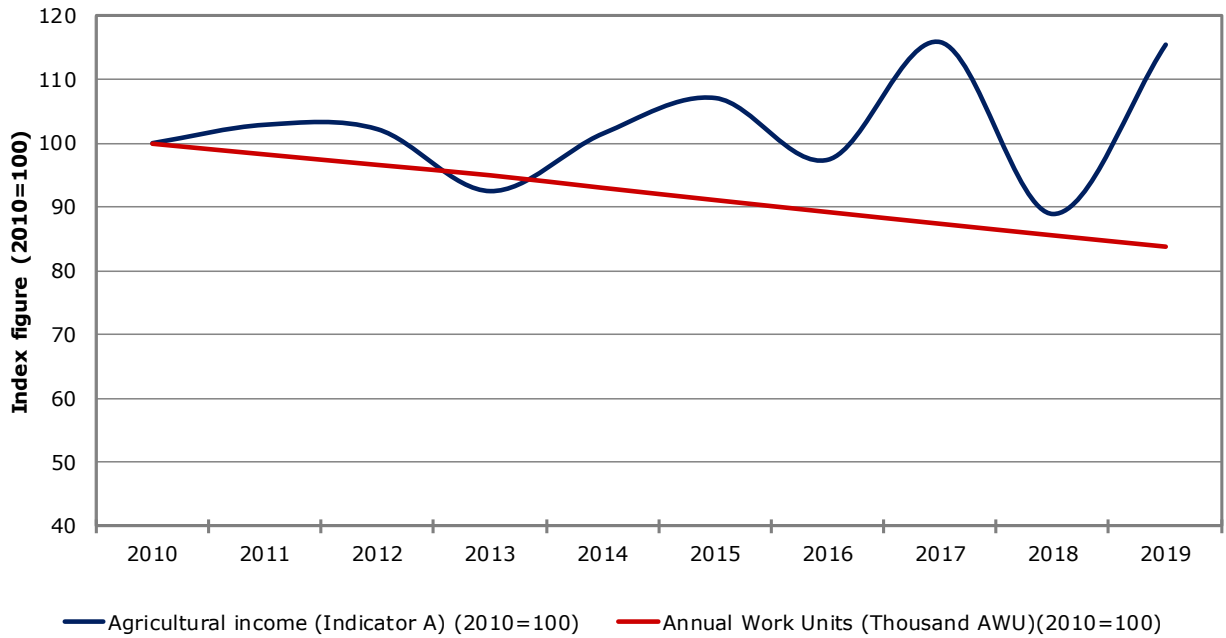
Evolution of harmonised indices of consumer prices



Source: Eurostat Updated: June 2020

4.6. AGRICULTURE: ECONOMIC ACCOUNTS

Farmers' income and labour development index (real terms)

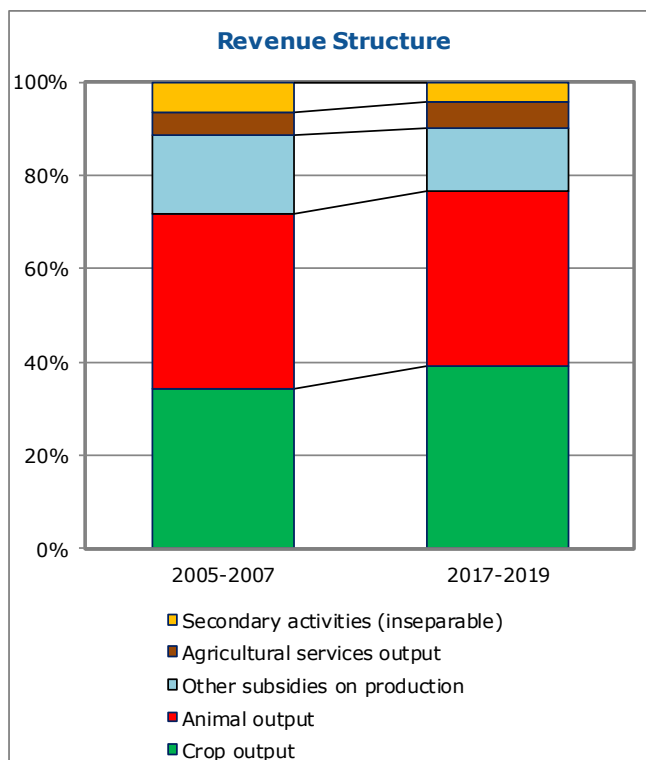
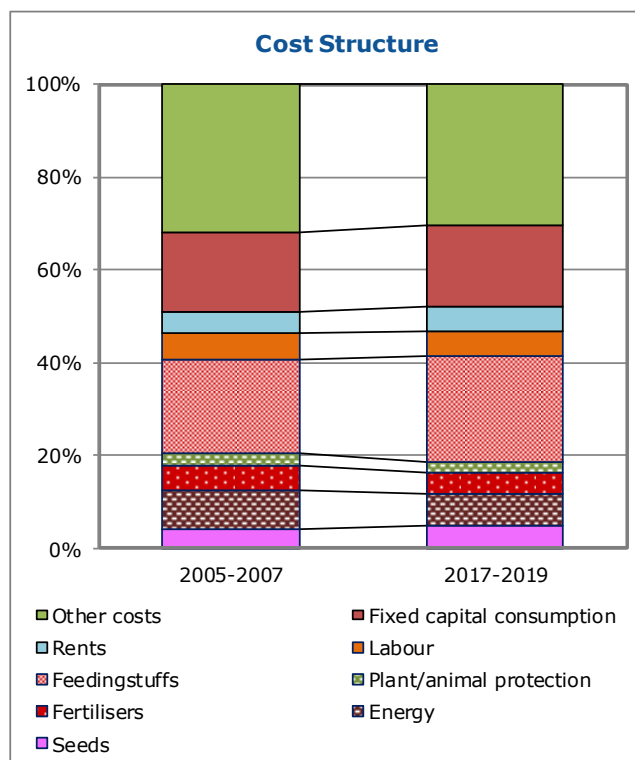
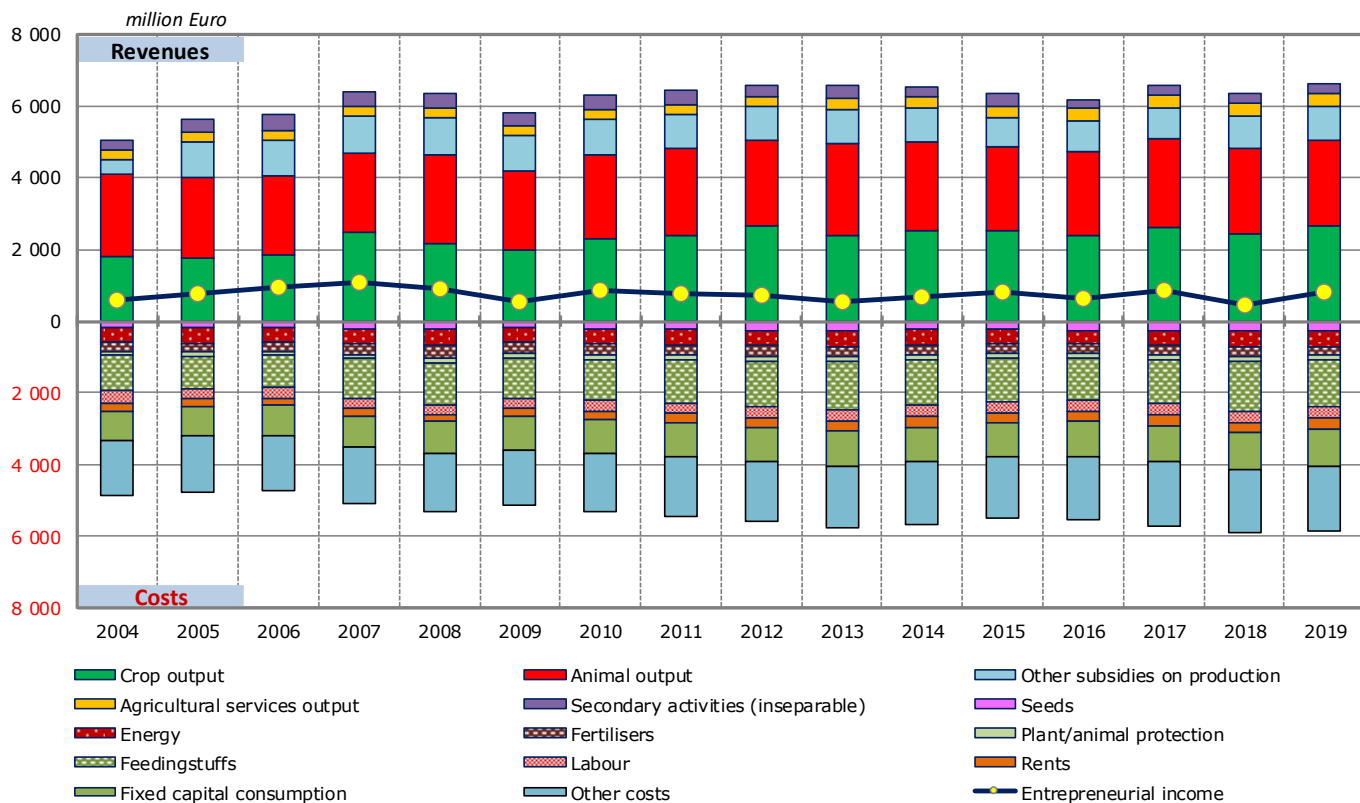


Source: Eurostat and DG Agriculture and Rural Development

Updated: June 2020

4.7. AGRICULTURE: ECONOMIC ACCOUNTS

Agricultural income (real prices)



5.1. AGRICULTURAL TRADE

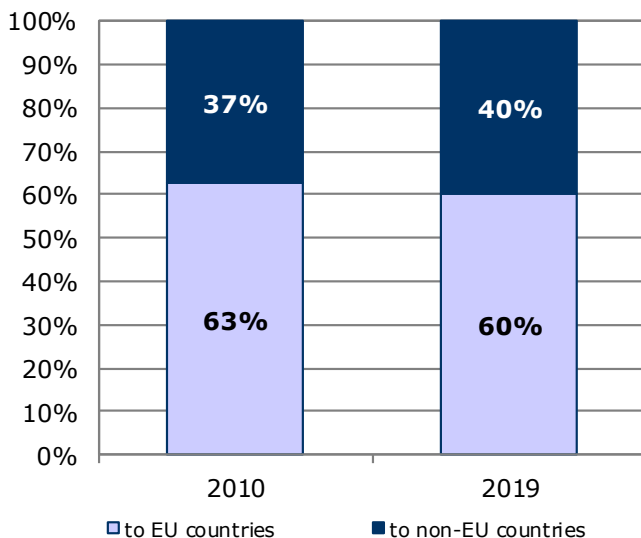
Agricultural trade in 2019

By category of product	Total trade	Trade with EU countries		Trade with non-EU countries	
	Million EUR	Million EUR	% change 2019/2018	Million EUR	% change 2019/2018
Exports					
Commodities	1 124.0	679.5	7.6%	444.5	1.43%
Other primary products	487.5	391.5	3.6%	95.9	13.87%
Processed products	552.4	438.8	-2.4%	113.6	-2.73%
Food preparations	1 936.2	1 178.9	9.9%	757.4	5.79%
Beverages	664.3	288.5	12.9%	375.8	5.83%
Non edible	912.7	422.2	17.6%	436.8	21.70%
Total agricultural products	5 677.1	3 399.4	8.1%	2 224.0	7.48%
as % of total exports	4.0%	4.1%		3.7%	
Imports					
Commodities	1 773.1	1 196.4	7.1%	576.7	0.0%
Other primary products	2 958.1	2 568.4	-1.3%	389.8	0.3%
Processed products	2 517.0	2 271.9	1.8%	245.1	-1.0%
Food preparations	2 532.7	2 233.3	6.1%	299.4	4.9%
Beverages	576.1	506.1	3.9%	70.0	-13.2%
Non edible	1 497.6	1 331.3	-1.3%	166.4	-1.2%
Total agricultural products	11 854.9	10 107.6	2.2%	1 747.3	0.01%
as % of total imports	8.4%	10.1%		4.1%	
Balance					
Commodities	-649.1	-516.9		-132.2	
Other primary products	-2 470.7	-2 176.9		-293.8	
Processed products	-1 964.6	-1 833.1		-131.4	
Food preparations	-596.4	-1 054.4		458.0	
Beverages	88.2	-217.7		305.8	
Non edible	-584.9	-909.0		270.4	
Total agricultural products	-6 177.8	-6 708.2		476.8	

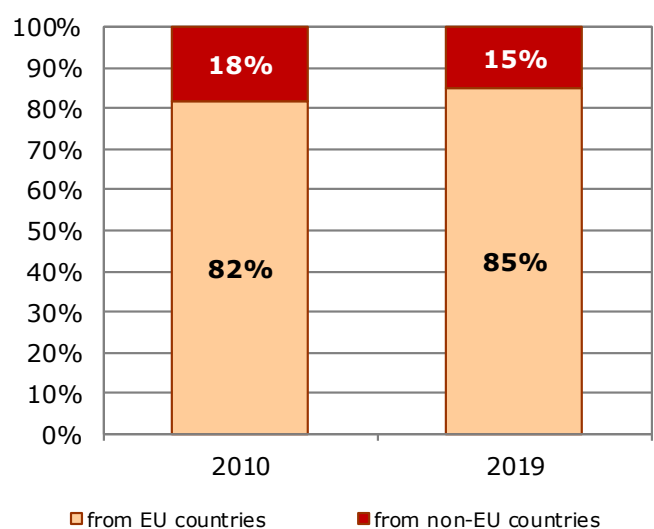
Source: Directorate General for Agriculture and Rural Development, based on COMEXT data

Updated: June 2020

Exports of agricultural products

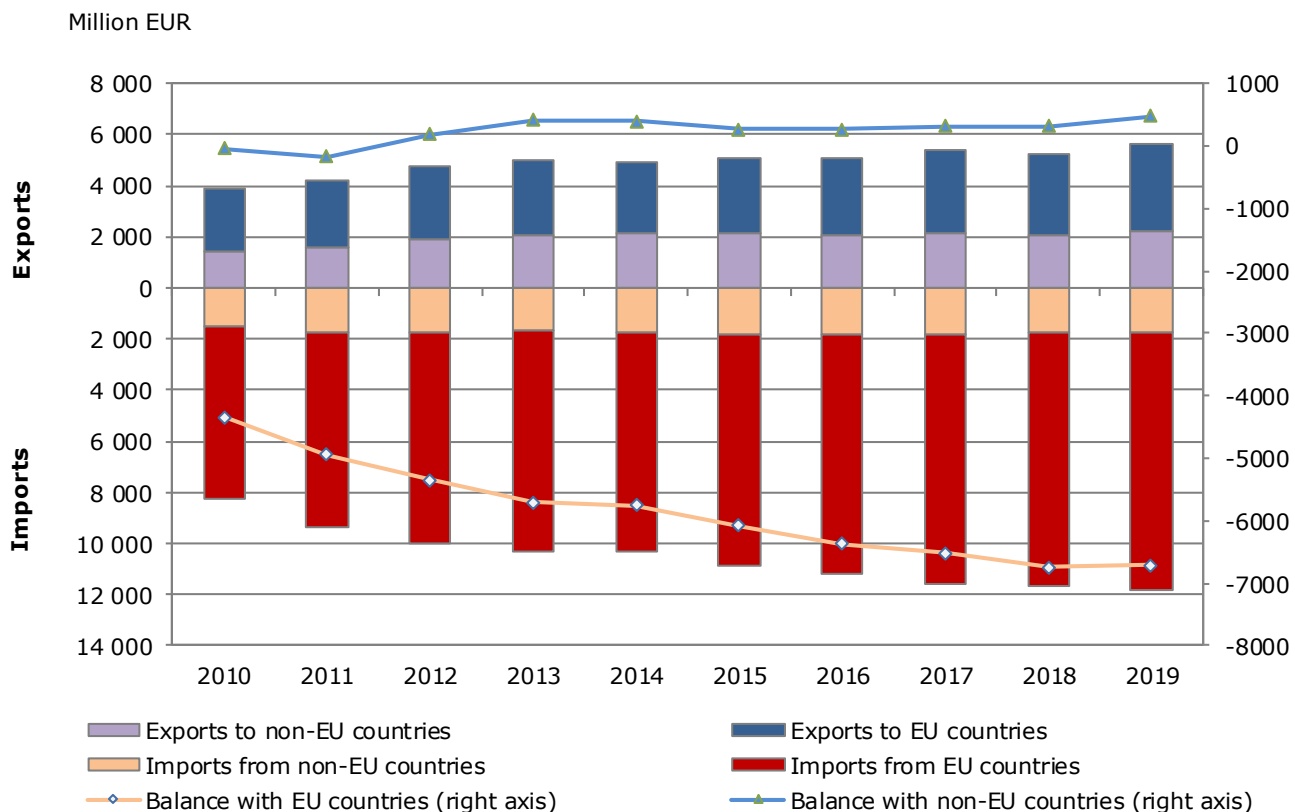


Imports of agricultural products

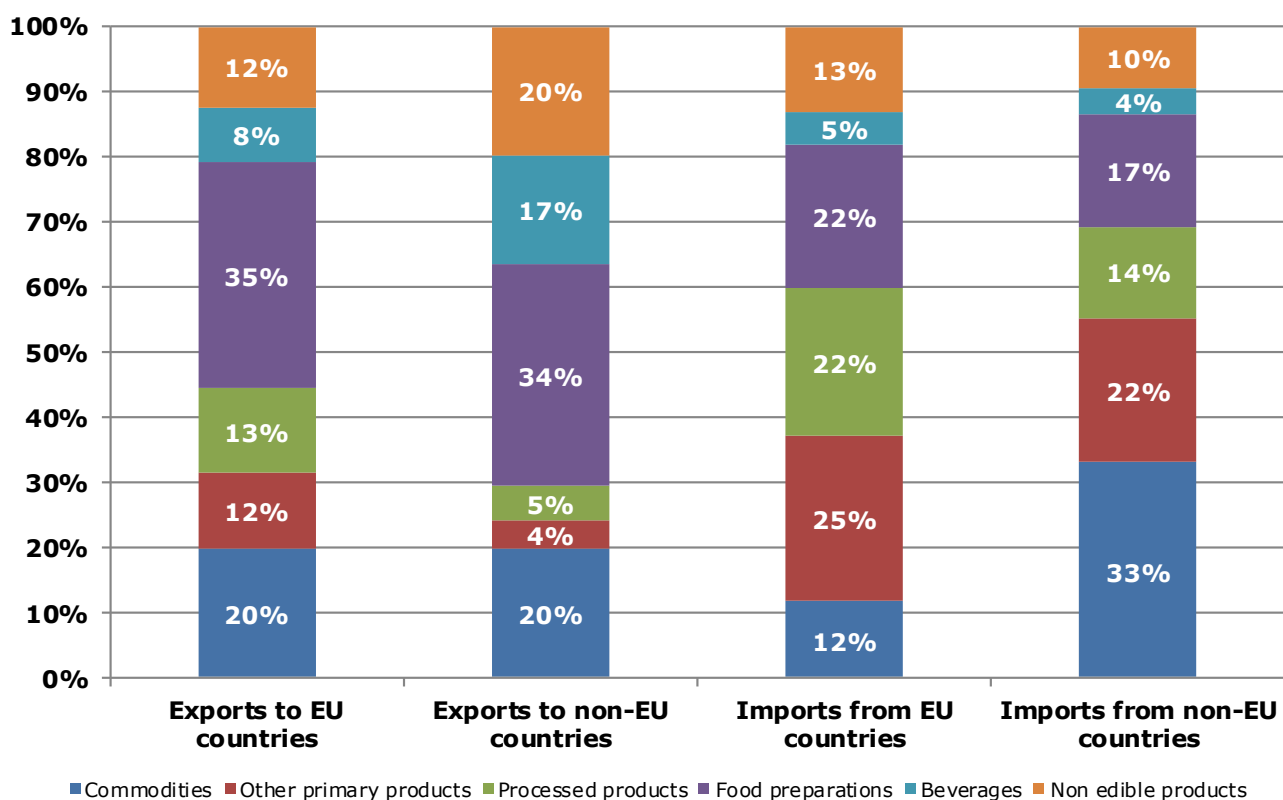


5.2. AGRICULTURAL TRADE

Evolution of agricultural trade with EU and non-EU countries



Structure of agricultural exports and imports



6.1. FARM STRUCTURE

Structure of agricultural holdings

Holdings		2010		2016	
		Total	%	Total	%
By UAA (*)	< 5 ha	8 930	12.6%	6 610	10.5%
	5-10 ha	15 820	22.3%	15 660	24.9%
	10-20 ha	14 180	19.9%	12 980	20.6%
	20-30 ha	7 140	10.0%	5 680	9.0%
	30-50 ha	8 030	11.3%	6 460	10.3%
	50-100 ha	9 070	12.8%	7 500	11.9%
	> 100 ha	7 930	11.2%	8 060	12.8%
By economic size (**)	< 4 000 €	17 900	25.2%	12 190	19.4%
	< 8 000 €	13 190	18.6%	12 550	19.9%
	< 15 000 €	10 960	15.4%	9 380	14.9%
	< 25 000 €	7 080	10.0%	6 350	10.1%
	< 50 000 €	7 450	10.5%	6 650	10.6%
	< 100 000 €	5 540	7.8%	5 460	8.7%
	< 250 000 €	5 570	7.8%	5 270	8.4%
	< 500 000 €	2 260	3.2%	2 870	4.6%
=/> 500 000 €	1 150	1.6%	2 220	3.5%	
By LSU (***)	0	30 730	43.2%	28 570	45.4%
	0-5	13 340	18.8%	12 000	19.1%
	5-10	6 430	9.0%	5 470	8.7%
	10-15	3 380	4.8%	2 790	4.4%
	15-20	2 370	3.3%	1 920	3.1%
	20-50	6 640	9.3%	5 140	8.2%
	50-100	4 050	5.7%	3 000	4.8%
	100-500	3 760	5.3%	3 580	5.7%
> 500	400	0.6%	480	0.8%	
By age of holder	< 35 years	#N/A	#N/A	3 340	5.3%
	35-44 years	#N/A	#N/A	7 400	11.8%
	45-54 years	#N/A	#N/A	#N/A	22.6%
	55-64 years	#N/A	#N/A	#N/A	27.6%
	> 64 years	#N/A	#N/A	#N/A	32.7%
	not applicable	#N/A	#N/A	#N/A	:
Total	#N/A	#N/A	#N/A	100%	
UAA in 1 000 ha	:		3 013		
UAA (ha) per holding	#N/A		47.9		

Source: Eurostat, Farm Structure Survey

Updated: June 2020

(*) UAA = Utilised agricultural area.

(**) Economic size: The standard output of an agricultural product (crop or livestock), abbreviated as SO, is the average monetary value of the agricultural output at farm-gate price, in euro per hectare or per head of livestock. There is a regional SO coefficient for each product, as an average value over a reference period (5 years, except for the SO 2004 coefficient calculated using the average of 3 years). The sum of all the SO per hectare of crop and per head of livestock in a farm is a measure of its overall [economic size](#), expressed in euro.

(***) LSU = Livestock units. A LSU is equivalent to a dairy cow. The number of animals (heads) is converted into LSU using a set of coefficients reflecting the feed requirements of the different animal categories.

6.2. FARM STRUCTURE

Structure of farm labour force

2016			
Family labour force		Non family labour force	
persons:	107 130	Data not available	
of which women:	38.1%		
AWUs (*):	37 610	AWUs:	14 190
Holders	Family members	Regular non family labour force	Non regular non family labour force
persons:	persons:	persons:	Data not available
57 710	49 420	22 150	
of which women:	of which women:	of which women:	
15.7%	64.4%	27.6%	
AWUs:	AWUs:	AWUs:	AWUs:
23 210	14 400	14 190	4 150
Total farm labour force (persons)		129 280	
Total farm labour force (AWUs)		55 940	

Source: Eurostat, Farm Structure Survey

Updated: June 2020

* AWUs = Annual work units. An AWU is equivalent to a worker employed on a full time basis for one year.

This document does not necessarily represent the official views of the European Commission
© European Union, 2020 - Reproduction authorised provided the source is acknowledged

Contact: DG Agriculture and Rural Development, Farm Economics Unit

Tel: +32-2-29 75471 / E-mail: Agri-C3@ec.europa.eu