



European  
Commission

June 2019

## Statistical Factsheet

# EUROPEAN UNION



### CONTENTS

Key figures EU-28	1
1. POPULATION & ECONOMY	2-5
2. FINANCIAL ASPECTS	6-8
3. ECONOMIC ACCOUNTS	9-16
4. AGRICULTURAL TRADE	17-20
5. FARM STRUCTURE	21-22

Country	Share in EU-28		
	GDP 2018	Population 2018	Rural population 2018
Belgium	2.9%	2.2%	1.0%
Bulgaria	0.3%	1.4%	1.0%
Czechia	1.3%	2.1%	2.3%
Denmark	1.9%	1.1%	1.7%
Germany	21.3%	16.2%	13.5%
Estonia	0.2%	0.3%	0.6%
Ireland	2.0%	0.9%	2.9%
Greece	1.2%	2.1%	3.5%
Spain	7.6%	9.1%	1.7%
France	14.8%	13.1%	19.6%
Croatia	0.3%	0.8%	1.8%
Italy	11.1%	11.8%	6.2%
Cyprus	0.1%	0.2%	:
Latvia	0.2%	0.4%	0.4%
Lithuania	0.3%	0.5%	0.2%

Country	Share in EU-28		
	GDP 2018	Population 2018	Rural population 2018
Luxembourg	0.4%	0.1%	:
Hungary	0.8%	1.9%	1.9%
Malta	0.1%	0.1%	:
Netherlands	4.9%	3.4%	0.1%
Austria	2.4%	1.7%	3.7%
Poland	3.1%	7.4%	14.2%
Portugal	1.3%	2.0%	3.3%
Romania	1.3%	3.8%	10.9%
Slovenia	0.3%	0.4%	1.3%
Slovakia	0.6%	1.1%	2.1%
Finland	1.5%	1.1%	2.3%
Sweden	2.9%	2.0%	1.0%
United Kingdom	15.0%	12.9%	2.7%

: no rural areas according to the EU urban-rural typology

Sources: European Commission, Eurostat  
Updated: June 2019

# European Union

## 1.1. POPULATION AND ECONOMY

### Population and gross domestic product: main data

EU Member States	Population		GDP at current prices		GDP in PPS (**)	
	Total population	Rural population (*)	Nominal GDP (million EUR)	GDP per capita (EUR)	Nominal GDP (million PPS)	GDP per capita (PPS)
	2018	2018	2018	2018	2018	2018
Belgium	11 398 589	969 766	455 445	39 915	408 236	35 778
Bulgaria	7 050 034	913 635	54 894	7 789	112 294	15 934
Czechia	10 610 055	2 248 265	205 979	19 397	291 842	27 483
Denmark	5 781 190	1 646 345	295 225	50 902	221 204	38 139
Germany	82 792 351	12 981 307	3 392 161	40 927	3 148 198	37 984
Estonia	1 319 133	589 886	25 473	19 310	32 659	24 757
Ireland	4 830 392	2 761 006	322 459	66 469	286 928	59 145
Greece	10 741 165	3 358 137	184 906	17 264	226 166	21 116
Spain	46 658 447	1 588 120	1 212 685	25 982	1 338 708	28 682
France	66 926 166	18 795 487	2 351 939	34 895	2 151 878	31 927
Croatia	4 105 493	1 755 559	51 847	12 588	79 388	19 275
Italy	60 483 973	5 988 690	1 766 906	29 192	1 785 440	29 498
Cyprus	864 236	:	20 768	24 017	23 056	26 662
Latvia	1 934 379	421 253	29 192	15 197	41 298	21 499
Lithuania	2 808 901	237 104	44 746	16 024	69 575	24 915
Luxembourg	602 005	:	58 141	95 016	47 130	77 023
Hungary	9 778 371	1 838 843	129 981	13 306	212 048	21 708
Malta	475 701	:	11 998	24 984	14 290	29 757
Netherlands	17 181 084	105 438	773 013	44 897	684 383	39 750
Austria	8 822 267	3 558 644	386 151	43 449	349 209	39 292
Poland	37 976 687	13 619 570	494 658	12 872	853 110	22 199
Portugal	10 291 027	3 200 129	201 569	19 589	247 096	24 013
Romania	19 530 631	10 436 306	203 440	10 437	385 892	19 797
Slovenia	2 066 880	1 206 977	45 861	22 184	54 978	26 595
Slovakia	5 443 120	2 035 986	90 489	16 627	131 378	24 141
Finland	5 513 130	2 188 424	232 356	42 024	187 502	33 912
Sweden	10 120 242	915 621	467 239	45 695	379 125	37 078
United Kingdom	66 273 576	2 553 460	2 391 321	35 985	2 137 831	32 170
<b>EU28</b>	<b>512 379 225</b>	<b>95 913 958</b>	<b>15 900 839</b>	<b>30 946</b>	<b>15 900 839</b>	<b>30 946</b>

Sources: European Commission, Eurostat

Updated: June 2019

(\*) Population living in predominantly rural regions, according to a revised urban-rural typology that classifies NUTS 3 regions based on the share of population in rural grid cells (see [ec.europa.eu/eurostat/statistics-explained/index.php/Urban-rural\\_typology](http://ec.europa.eu/eurostat/statistics-explained/index.php/Urban-rural_typology)).

(\*\*) PPS = Purchasing power standards. GDP in PPS eliminates differences in price levels between countries.

# European Union

## 1.2. POPULATION AND ECONOMY

### Importance of rural areas

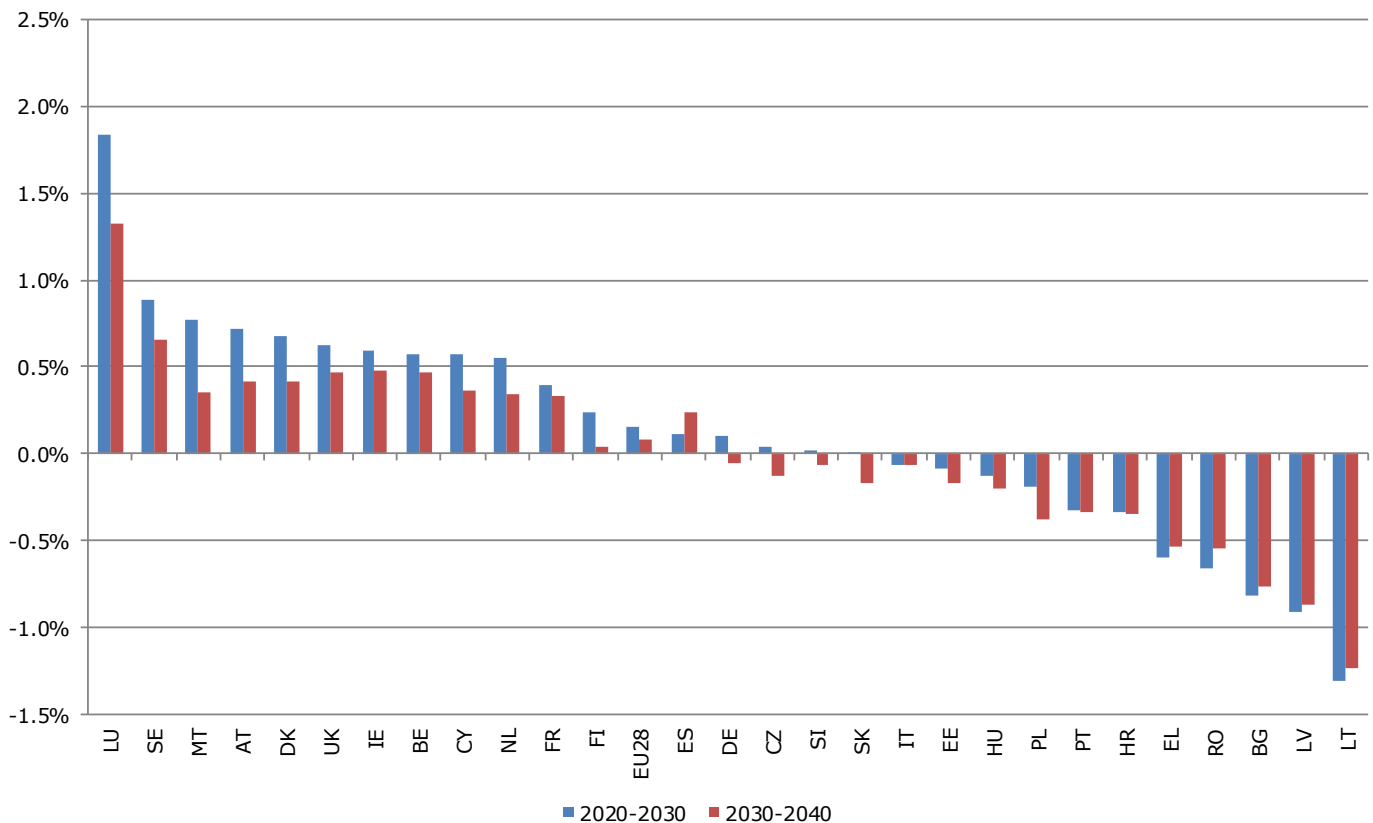
		Territory (km <sup>2</sup> )	Population (persons)	Gross Value Added (Million EUR)
		2016	2018	2016
EU-28	PR	1 956 840	95 913 958	1 630 226
	IR	2 032 265	183 930 293	4 225 488
	PU	480 403	228 197 488	7 367 449
	<b>Total</b>	<b>4 469 508</b>	<b>508 041 739</b>	<b>13 223 163</b>
	PR	43.8%	18.9%	12.3%
	IR	45.5%	36.2%	32.0%
	PU	10.7%	44.9%	55.7%

Sources: European Commission, Eurostat

Updated: June 2019

PR = predominantly rural; IR = intermediate regions; PU = predominantly urban. See the urban-rural typology of regions at [ec.europa.eu/eurostat/statistics-explained/index.php/Urban-rural\\_typology](http://ec.europa.eu/eurostat/statistics-explained/index.php/Urban-rural_typology)

### Projected annual growth rates of population



Source: Eurostat. Updated: June 2019

# European Union

## 1.3. POPULATION AND ECONOMY

### Real GDP growth rate

EU Member States	% change over previous year									
	2011	2012	2013	2014	2015	2016	2017	2018	2019	2020
Belgium	1.8%	0.2%	0.2%	1.3%	1.7%	1.5%	1.7%	1.5%	1.5%	1.4%
Bulgaria	1.9%	0.0%	0.5%	1.8%	3.5%	3.9%	3.8%	3.5%	3.7%	3.6%
Czechia	1.8%	-0.8%	-0.5%	2.7%	5.3%	2.5%	4.3%	3.0%	2.9%	2.6%
Denmark	1.3%	0.2%	0.9%	1.6%	1.6%	2.0%	2.3%	1.2%	1.8%	1.6%
Germany	3.7%	0.5%	0.5%	2.2%	1.7%	2.2%	2.2%	1.7%	1.8%	1.7%
Estonia	7.6%	4.3%	1.9%	2.9%	1.9%	3.5%	4.9%	3.5%	2.8%	2.6%
Ireland	3.7%	0.2%	1.3%	8.8%	25.1%	5.0%	7.2%	7.8%	4.5%	3.8%
Greece	-9.1%	-7.3%	-3.2%	0.7%	-0.4%	-0.2%	1.5%	2.0%	2.0%	2.0%
Spain	-1.0%	-2.9%	-1.7%	1.4%	3.6%	3.2%	3.0%	2.6%	2.2%	2.0%
France	2.2%	0.3%	0.6%	1.0%	1.1%	1.2%	2.2%	1.7%	1.6%	1.6%
Croatia	-0.3%	-2.3%	-0.5%	-0.1%	2.4%	3.5%	2.9%	2.8%	2.8%	2.6%
Italy	0.6%	-2.8%	-1.7%	0.1%	0.9%	1.1%	1.6%	1.1%	1.2%	1.3%
Cyprus	0.4%	-2.9%	-5.8%	-1.3%	2.0%	4.8%	4.2%	3.9%	3.5%	2.9%
Latvia	6.4%	4.0%	2.4%	1.9%	3.0%	2.1%	4.6%	4.1%	3.2%	2.9%
Lithuania	6.0%	3.8%	3.5%	3.5%	2.0%	2.4%	4.1%	3.4%	2.8%	2.5%
Luxembourg	2.5%	-0.4%	3.7%	4.3%	3.9%	2.4%	1.5%	3.1%	3.0%	2.7%
Hungary	1.7%	-1.6%	2.1%	4.2%	3.5%	2.3%	4.1%	4.3%	3.4%	2.6%
Malta	1.3%	2.7%	4.6%	8.2%	9.5%	5.2%	6.7%	5.4%	4.9%	4.4%
Netherlands	1.6%	-1.0%	-0.1%	1.4%	2.0%	2.2%	2.9%	2.8%	2.4%	1.8%
Austria	2.9%	0.7%	0.0%	0.7%	1.1%	2.0%	2.6%	2.7%	2.0%	1.8%
Poland	5.0%	1.6%	1.4%	3.3%	3.8%	3.1%	4.8%	4.8%	3.7%	3.3%
Portugal	-1.8%	-4.0%	-1.1%	0.9%	1.8%	1.9%	2.8%	2.2%	1.8%	1.7%
Romania	2.0%	2.1%	3.5%	3.4%	3.9%	4.8%	7.3%	3.6%	3.8%	3.6%
Slovenia	0.6%	-2.7%	-1.1%	3.0%	2.3%	3.1%	4.9%	4.3%	3.3%	3.0%
Slovakia	2.8%	1.7%	1.5%	2.8%	4.2%	3.1%	3.2%	4.0%	4.1%	3.5%
Finland	2.6%	-1.4%	-0.8%	-0.6%	0.1%	2.5%	2.8%	2.9%	2.2%	1.9%
Sweden	2.7%	-0.3%	1.2%	2.6%	4.5%	2.7%	2.1%	2.4%	1.8%	1.8%
United Kingdom	1.6%	1.4%	2.0%	2.9%	2.3%	1.8%	1.7%	1.3%	1.2%	1.2%
<b>European Union</b>	<b>1.8%</b>	<b>-0.4%</b>	<b>0.3%</b>	<b>1.8%</b>	<b>2.3%</b>	<b>2.0%</b>	<b>2.4%</b>	<b>2.1%</b>	<b>1.9%</b>	<b>1.8%</b>

Source: European Commission, Directorate General for Economic and Financial Affairs

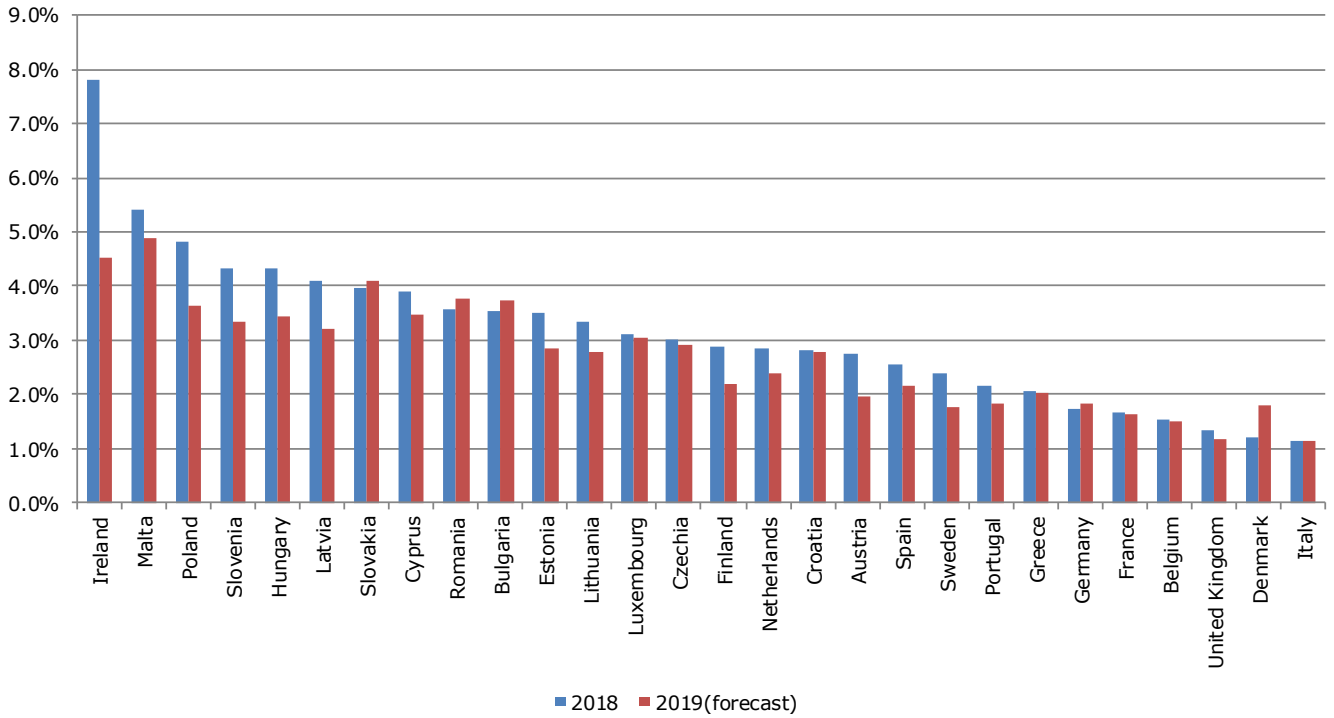
Updated: June 2019

Data for 2019 and 2020 are forecasts.

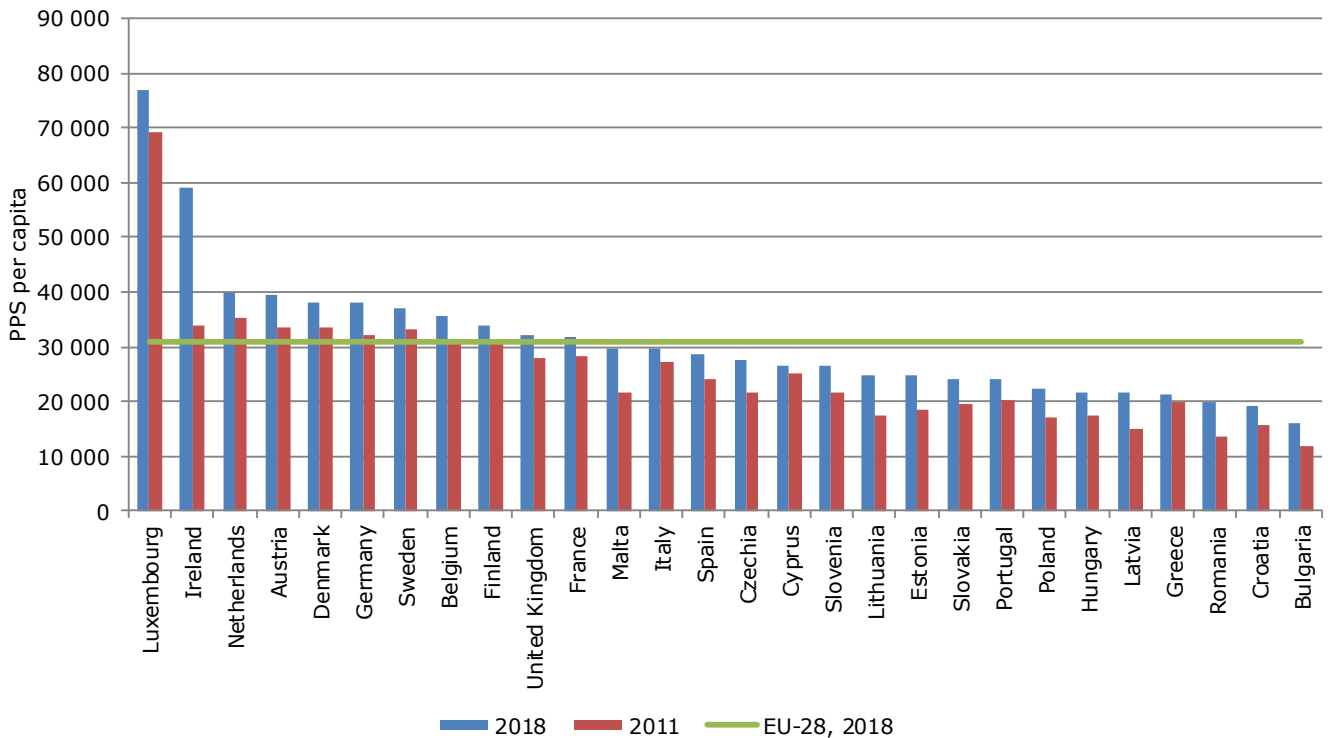
# European Union

## 1.4. POPULATION AND ECONOMY

### Real GDP growth rate



### Evolution of GDP per capita in PPS



Source: European Commission, Directorate General for Economic and Financial Affairs  
 Updated: June 2019

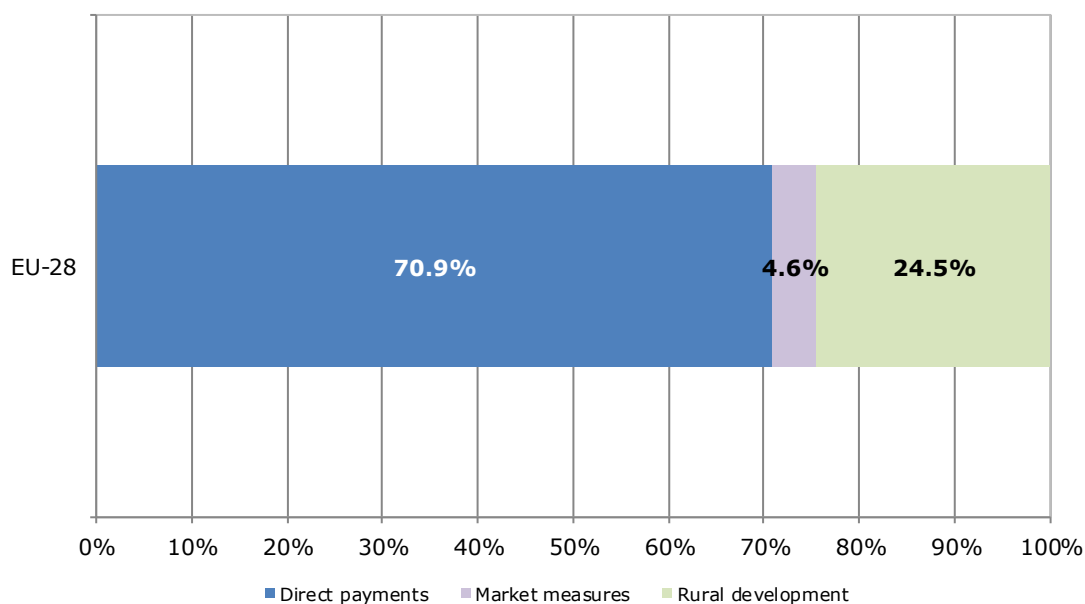
## 2.1. AGRICULTURE: FINANCIAL ASPECTS

### CAP expenditure

Measures	2018	2018	
	1 000 EUR	% of total	% of heading
Decoupled direct aids	35 304 820	60.3%	85.1%
Other direct aids	5 750 010	9.8%	13.9%
Additional amounts of aid	6	0.0%	0.0%
Reimbursement of direct aids in relation to financial discipline	441 680	0.8%	1.1%
<b>Direct payments</b>	<b>41 496 516</b>	<b>70.9%</b>	<b>100.0%</b>
Cereals	14 898	0.0%	0.6%
Olive oil	47 921	0.1%	1.8%
Textile plants	0	0.0%	0.0%
Fruit and vegetables	865 147	1.5%	32.1%
Wine sector	968 094	1.7%	35.9%
Promotion	161 215	0.3%	6.0%
Other plant products/measures	231 198	0.4%	8.6%
Milk and milk products	201 081	0.3%	7.5%
Beef and veal	130	0.0%	0.0%
Sheepmeat and goatmeat	-1	0.0%	0.0%
Pigmeat, eggs, poultry and other	63 949	0.1%	2.4%
School schemes*	155 818	0.3%	5.8%
<b>Market measures</b>	<b>2 694 551</b>	<b>4.6%</b>	<b>100%</b>
<b>Rural development</b>	<b>14 346 900</b>	<b>24.5%</b>	<b>100%</b>
<b>TOTAL</b>	<b>58 537 967</b>	<b>100.0%</b>	

Note: Expenditure in commitments for direct payments and market measures; ceilings of support for rural development.

\*Programme implementation based on school years; reimbursement possible in the next financial year



### CAP expenditure by Member State in 2018

EU Member States	Direct payments	Market measures	Rural development	Total
	1 000 EUR	1 000 EUR	1 000 EUR	1 000 EUR
Belgium	501 448	99 760	97 066	<b>698 274</b>
Bulgaria	783 867	31 626	339 966	<b>1 155 459</b>
Czechia	834 152	18 533	343 033	<b>1 195 719</b>
Denmark	827 450	8 426	153 125	<b>989 001</b>
Germany	4 815 139	145 091	1 400 927	<b>6 361 157</b>
Estonia	122 582	1 823	125 553	<b>249 957</b>
Ireland	1 197 015	28 227	312 892	<b>1 538 134</b>
Greece	2 043 838	69 120	701 720	<b>2 814 678</b>
Spain	5 072 361	505 071	1 184 420	<b>6 761 851</b>
France	7 193 522	605 291	1 668 304	<b>9 467 117</b>
Croatia	240 476	8 733	282 343	<b>531 552</b>
Italy	3 675 692	640 307	1 495 584	<b>5 811 582</b>
Cyprus	49 445	7 853	18 892	<b>76 191</b>
Latvia	228 119	5 548	157 237	<b>390 903</b>
Lithuania	462 509	19 850	230 472	<b>712 831</b>
Luxembourg	33 080	473	14 415	<b>47 968</b>
Hungary	1 279 638	40 358	488 027	<b>1 808 023</b>
Malta	5 106	172	13 893	<b>19 171</b>
Netherlands	720 300	50 307	118 226	<b>888 832</b>
Austria	691 337	26 380	564 085	<b>1 281 802</b>
Poland	3 364 598	68 693	1 190 589	<b>4 623 880</b>
Portugal	665 008	104 040	580 721	<b>1 349 769</b>
Romania	1 774 566	35 957	1 184 725	<b>2 995 248</b>
Slovenia	134 876	7 342	120 033	<b>262 251</b>
Slovakia	438 445	9 488	215 106	<b>663 039</b>
Finland	523 459	7 461	341 593	<b>872 513</b>
Sweden	685 650	11 586	249 552	<b>946 787</b>
United Kingdom	3 132 843	48 437	754 400	<b>3 935 680</b>
<b>EU-28</b>	<b>41 496 516</b>	<b>2 694 551</b>	<b>14 346 900</b>	<b>58 537 967</b>

Note: Expenditure in commitments for direct payments and market measures; ceilings of support for rural development.

Sources: European Commission, Directorate General for Agriculture and Rural Development.

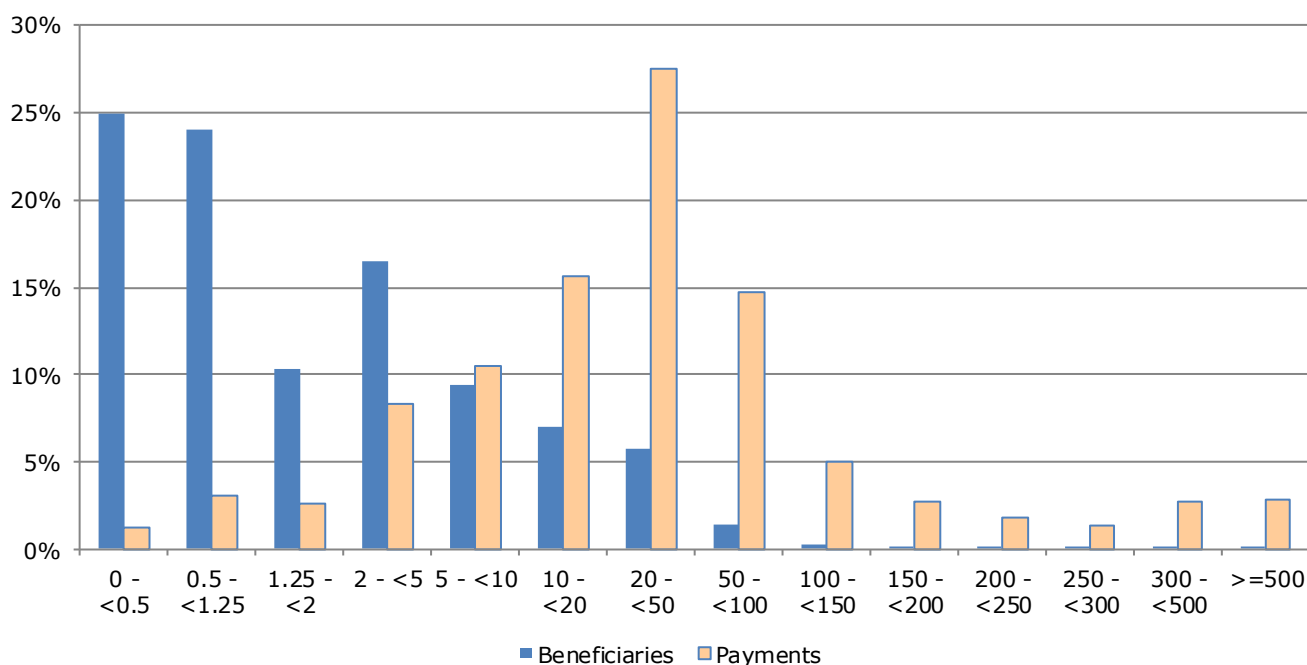
Updated: June 2019

## 2.3. AGRICULTURE: FINANCIAL ASPECTS

### Distribution of direct aids to producers in financial year 2017\*

Size-class of aid (all direct payments)	Financial year 2017			
	Beneficiaries		Payments in EUR	
	x 1 000	% of total	x 1 000	% of total
< 0 €	4	0.1%	-2 896	0.0%
≥ 0 and < 500 €	1 632	25.0%	534 234	1.3%
≥ 500 and < 1 250 €	1 574	24.1%	1 273 432	3.1%
≥ 1 250 and < 2 000 €	677	10.3%	1 076 411	2.6%
≥ 2 000 and < 5 000 €	1 081	16.5%	3 460 172	8.3%
≥ 5 000 and < 10 000 €	614	9.4%	4 350 304	10.5%
≥ 10 000 and < 20 000 €	459	7.0%	6 517 621	15.7%
≥ 20 000 and < 50 000 €	373	5.7%	11 419 034	27.5%
≥ 50 000 and < 100 000 €	91	1.4%	6 099 889	14.7%
≥ 100 000 and < 150 000 €	17	0.3%	2 059 722	5.0%
≥ 150 000 and < 200 000 €	6	0.1%	1 111 717	2.7%
≥ 200 000 and < 250 000 €	3	0.1%	763 093	1.8%
≥ 250 000 and < 300 000 €	2	0.0%	569 915	1.4%
≥ 300 000 and < 500 000 €	3	0.0%	1 135 598	2.7%
≥ 500 000 €	1	0.0%	1 189 276	2.9%
<b>Total</b>	<b>6 538</b>	<b>100%</b>	<b>41 557 522</b>	<b>100%</b>

Distribution of direct aid by size-class of aid in EU-28 (1 000 EUR)



Source: European Commission, Directorate General for Agriculture and Rural Development

Note: In order to protect the anonymity of the beneficiaries, numbers less than 10 have been made invisible in this table  
Updated: June 2019

\* Figures for financial year 2018 will become available during the second half of 2019.



## 3.1. AGRICULTURE: ECONOMIC ACCOUNTS

### Agricultural output

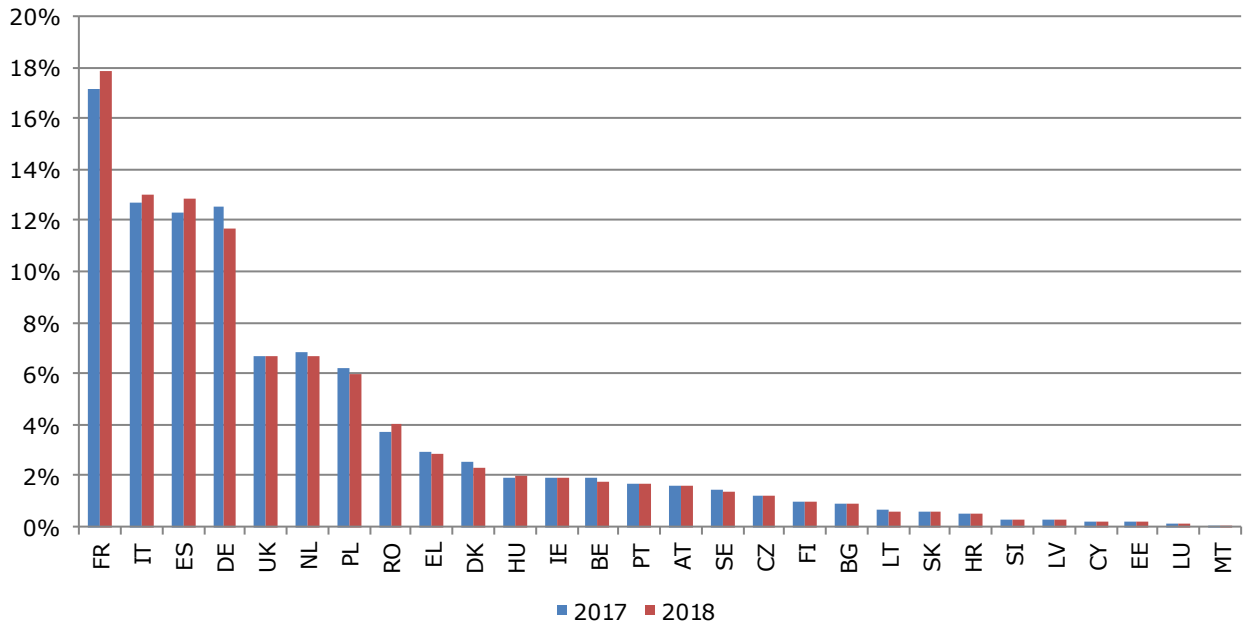
Output components	2016	2017	2018	
	Million EUR		Million EUR	% of total
Cereals	40 578	42 486	43 807	21.3%
<i>Wheat and spelt</i>	19 624	21 191	21 300	10.4%
<i>Rye and meslin</i>	760	895	838	0.4%
<i>Barley</i>	7 379	7 676	8 511	4.1%
<i>Oats and summer cereal mixtures</i>	1 253	1 273	1 222	0.6%
<i>Grain maize</i>	9 060	9 066	9 655	4.7%
<i>Rice</i>	776	662	688	0.3%
<i>Other cereals</i>	1 726	1 722	1 594	0.8%
Industrial crops	19 577	20 734	17 837	8.7%
<i>Oil seeds and oleaginous fruits</i>	10 657	11 385	9 997	4.9%
<i>Protein crops</i>	1 326	1 481	1 247	0.6%
<i>Raw tobacco</i>	509	510	430	0.2%
<i>Sugar beet</i>	3 159	3 612	2 746	1.3%
<i>Other industrial crops</i>	3 926	3 746	3 416	1.7%
Forage plants	22 207	21 275	19 967	9.7%
Vegetables and horticultural products	51 203	53 299	52 666	25.6%
Potatoes	11 868	10 503	11 089	5.4%
Fruits	25 450	26 068	27 537	13.4%
Wine	21 204	20 602	25 800	12.5%
Olive oil	4 994	6 223	4 158	2.0%
Other crop products	2 655	2 686	2 781	1.4%
<b>Crop output</b>	<b>199 737</b>	<b>203 876</b>	<b>205 641</b>	<b>56.3%</b>
Animals	93 427	96 830	94 733	59.3%
<i>Cattle</i>	31 106	31 436	31 645	19.8%
<i>Pigs</i>	33 236	36 561	33 550	21.0%
<i>Equines</i>	1 056	1 141	1 190	0.7%
<i>Sheep and goats</i>	5 518	5 423	5 491	3.4%
<i>Poultry</i>	20 184	19 968	20 705	13.0%
<i>Other animals</i>	2 328	2 300	2 152	1.3%
Animal products	57 195	67 074	65 115	40.7%
<i>Milk</i>	46 463	54 999	53 090	33.2%
<i>Eggs</i>	8 130	9 439	9 519	6.0%
<i>Other animal products</i>	2 602	2 636	2 505	1.6%
<b>Animal output</b>	<b>150 622</b>	<b>163 904</b>	<b>159 847</b>	<b>43.7%</b>
<b>Agricultural goods output</b>	<b>350 359</b>	<b>367 781</b>	<b>365 488</b>	<b>100.0%</b>

Source: Eurostat, Economic Accounts for Agriculture (values at current producer prices). Updated: June 2019.

## 3.2. AGRICULTURE: ECONOMIC ACCOUNTS

### Agricultural industry output (\*)

Agricultural industry contribution to the EU-28 total agricultural output, %



(\*) The output of the agricultural industry comprises the output of agricultural production and the output of non-agricultural secondary activities that are inseparable from the principal agricultural activity.

### Agricultural input

Input components	2016	2017	2018	2017/2016	2018/2017
	Million EUR			% change	
Seeds and planting stock	11 771	11 814	12 302	0.4%	4.1%
Energy	23 965	24 979	26 948	4.2%	7.9%
Fertilisers and soil improvers	16 960	15 734	15 620	-7.2%	-0.7%
Plant protection products	11 845	11 888	11 847	0.4%	-0.3%
Veterinary expenses	6 064	6 011	6 138	-0.9%	2.1%
Feedingstuffs	82 753	82 809	85 901	0.1%	3.7%
Maintenance of materials	13 236	13 683	13 762	3.4%	0.6%
Maintenance of buildings	4 767	4 792	4 931	0.5%	2.9%
Agricultural services	16 767	16 984	16 987	1.3%	0.0%
Other goods and services	33 216	33 709	33 934	1.5%	0.7%
<b>Total intermediate consumption</b>	<b>225 204</b>	<b>225 905</b>	<b>231 689</b>	<b>0.3%</b>	<b>2.6%</b>
<b>Fixed capital consumption</b>	<b>56 859</b>	<b>56 913</b>	<b>56 090</b>	<b>0.1%</b>	<b>-1.4%</b>

Source: Eurostat, Economic Accounts for Agriculture (values at real basic price)

Updated: June 2019

## 3.3. AGRICULTURE: ECONOMIC ACCOUNTS

### Agricultural income

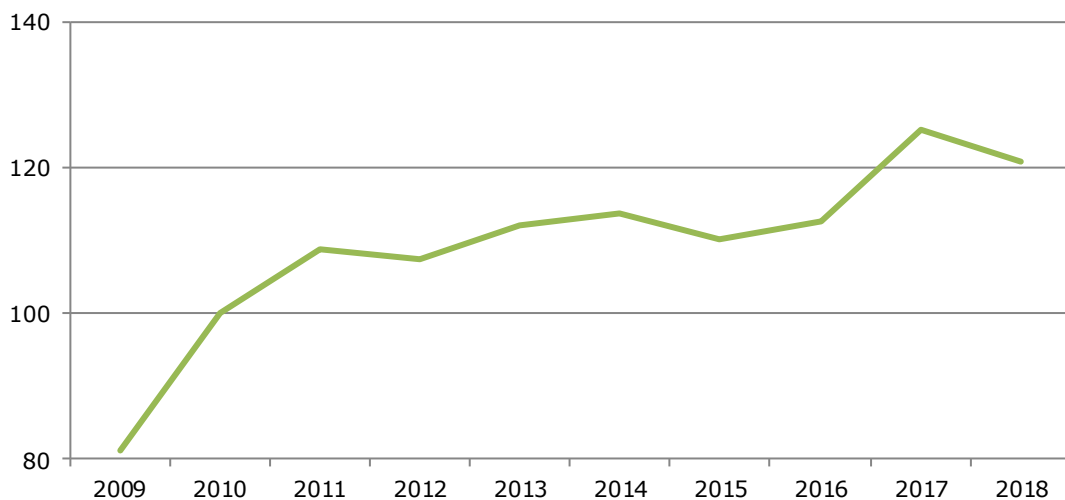
Values at real prices	2016	2017	2018	2017/2016	2018/2017
	Million EUR			% change	
<b>Output of the agricultural "industry":</b>	<b>383 937</b>	<b>401 765</b>	<b>399 737</b>	<b>4.6%</b>	<b>-0.5%</b>
Crop output	199 737	203 876	205 641	2.1%	0.9%
Animal output:	150 622	163 904	159 847	8.8%	-2.5%
Animals	93 427	96 830	94 733	3.6%	-2.2%
Animal products	57 195	67 074	65 115	17.3%	-2.9%
Agricultural services	18 745	18 977	18 993	1.2%	0.1%
Secondary activities	14 833	15 008	15 256	1.2%	1.7%
<b>- Intermediate consumption</b>	<b>225 204</b>	<b>225 905</b>	<b>231 689</b>	<b>0.3%</b>	<b>2.6%</b>
<b>= Gross value added at basic prices</b>	<b>158 733</b>	<b>175 860</b>	<b>168 048</b>	<b>10.8%</b>	<b>-4.4%</b>
- Consumption of fixed capital	56 859	56 913	56 090	0.1%	-1.4%
- Taxes	4 665	4 561	4 646	-2.2%	1.9%
+ Subsidies	50 080	47 613	47 122	-4.9%	-1.0%
<b>= Factor income</b>	<b>147 288</b>	<b>161 999</b>	<b>154 433</b>	<b>10.0%</b>	<b>-4.7%</b>

<b>Agricultural income* (2010=100)</b>	<b>112.5</b>	<b>125.2</b>	<b>120.7</b>	<b>11.3%</b>	<b>-3.6%</b>
--	--------------	--------------	--------------	--------------	--------------

Source: Eurostat, Economic Accounts for Agriculture (values at real prices; constant prices for Indicator A)

Updated: June 2019

Evolution of agricultural income, Indicator A (2010 = 100)



Source: Eurostat, Economic Accounts for Agriculture

Updated: June 2019

## 3.4. AGRICULTURE: ECONOMIC ACCOUNTS

### Evolution of agricultural income

**Indicator A:** Index of the real income of factors in agriculture per annual work unit (AWU). This yardstick corresponds to the real net value added at factor cost of agriculture per total AWU.

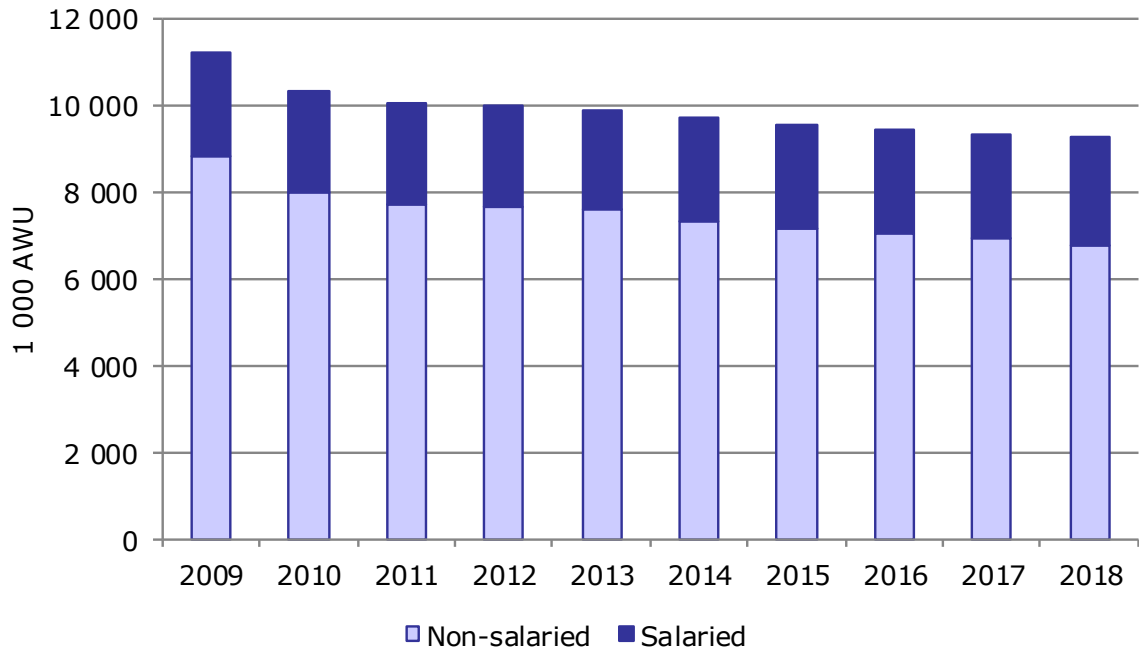
Indicator A	2009	2010	2011	2012	2013	2014	2015	2016	2017	2018
Belgium	77	100	89.2	108	87.7	84	93.3	83.1	85.8	67
Bulgaria	89.8	100	114.1	133.3	162	173.4	159.3	190.4	226.7	202.3
Czechia	84.8	100	134.8	133.6	134.9	155.3	137.7	155.2	153.1	141.7
Denmark	56.7	100	112.4	153.5	106.7	109.2	69.5	61.9	109.9	59.1
Germany	72.2	100	116.6	105	122	116.7	80.5	85.4	112.7	86.5
Estonia	60.6	100	124.5	144.8	134.6	125.5	101.9	64.5	108	99.6
Ireland	88	100	131.8	118.6	122.6	126.8	123.7	130	163.6	138.2
Greece	103.8	100	87.2	87.1	80.6	87.6	96.7	90.2	98.6	93.9
Spain	94.3	100	101.1	102.5	112.7	118.3	125	135.6	133.5	138.5
France	70.8	100	104.6	105.3	89.5	101.8	107.2	94.2	105.8	116.3
Croatia	109.2	100	95.5	81.7	90.4	78.3	105.8	117.7	117.9	118.8
Italy	110.5	100	118.3	126.9	150.2	136.3	133.6	131.3	132	136.8
Cyprus	100.4	100	74.8	103.3	102.6	95.1	123.8	126.5	127.9	129.7
Latvia	77.8	100	95.8	115.2	103.9	115.7	131.3	119.7	138.2	126.4
Lithuania	88.1	100	127.8	159.6	144.6	135.5	144.6	121.1	150	103.9
Luxembourg	85.1	100	99.8	105.3	90.7	118.8	99.5	91	116.7	109.8
Hungary	85.7	100	148.7	136.7	150.2	160.1	152.6	163.5	166.2	171.6
Malta	109.4	100	87	82.2	80.9	79.6	95.9	70.5	63.4	61.2
Netherlands	78	100	85.5	92.3	103.6	99.5	101.6	105.1	117.8	104.5
Austria	83.1	100	115.3	108.4	95.3	88.8	83.4	93.9	106.9	102.5
Poland	76.9	100	113.8	106.3	114.9	103	99.3	125.6	140.4	122.2
Portugal	83.9	100	83.6	91.8	106.9	108.2	110.7	125.4	132.1	132.3
Romania	77.9	100	129	95.9	113.3	123.7	116.7	120.5	136.6	137.1
Slovenia	86.2	100	114.8	91.9	92.2	104.5	115.3	106.1	98.4	121.9
Slovakia	65.6	100	118.7	133.7	130.3	143.3	142.8	173.3	205.4	195.1
Finland	90.9	100	86.4	87.6	86.3	77.9	62.8	82.8	75.1	80.3
Sweden	77.3	100	102	101.4	91.8	101.1	106.3	98.2	114.2	76
United Kingdom	105.7	100	116.6	110.5	119.3	117.6	101.7	98.8	117.7	107.2
<b>EU28</b>	<b>81.1</b>	<b>100</b>	<b>108.8</b>	<b>107.5</b>	<b>111.9</b>	<b>113.6</b>	<b>110</b>	<b>112.5</b>	<b>125.2</b>	<b>120.7</b>

Source: Eurostat, Economic Accounts for Agriculture

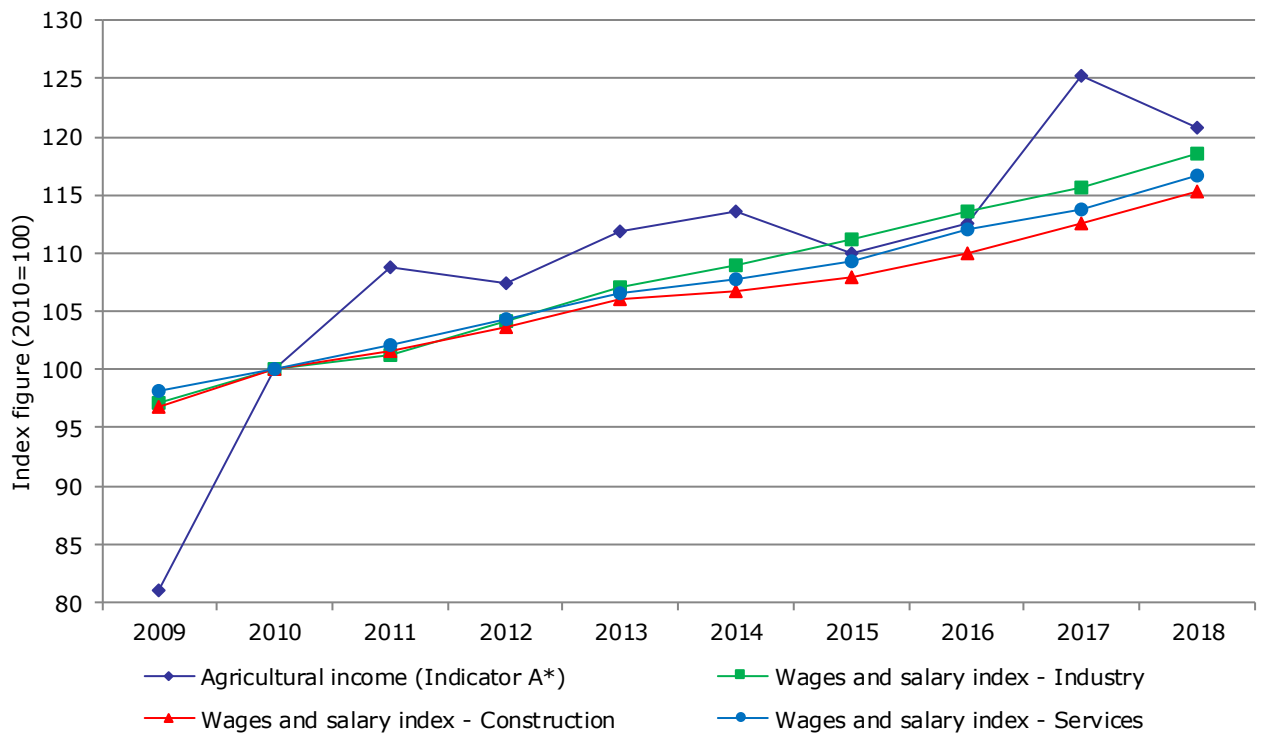
Updated: June 2019

## 3.5. AGRICULTURE: ECONOMIC ACCOUNTS

### Evolution of agricultural labour input



### Evolution of agricultural income compared to wages and salaries in other sectors of the economy

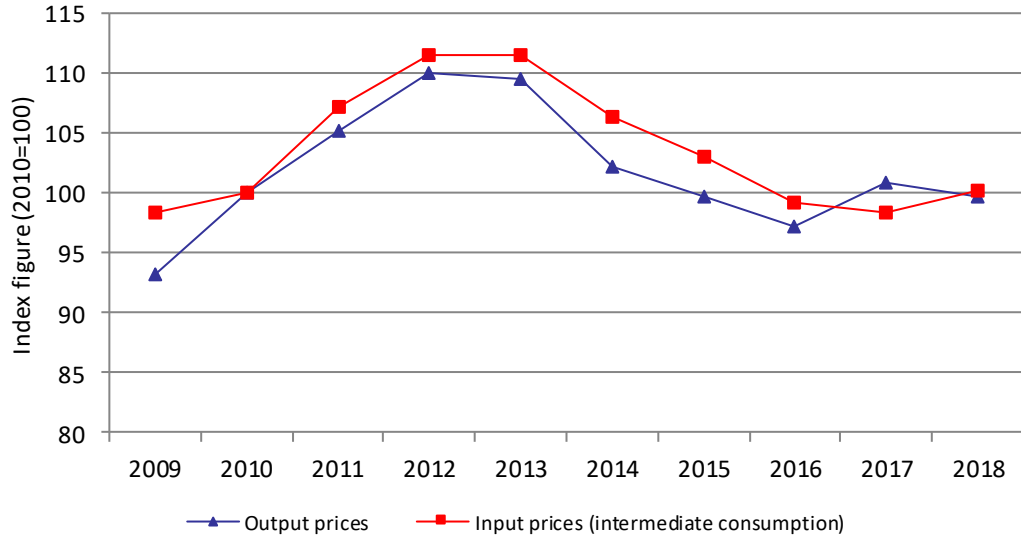


Source: Eurostat

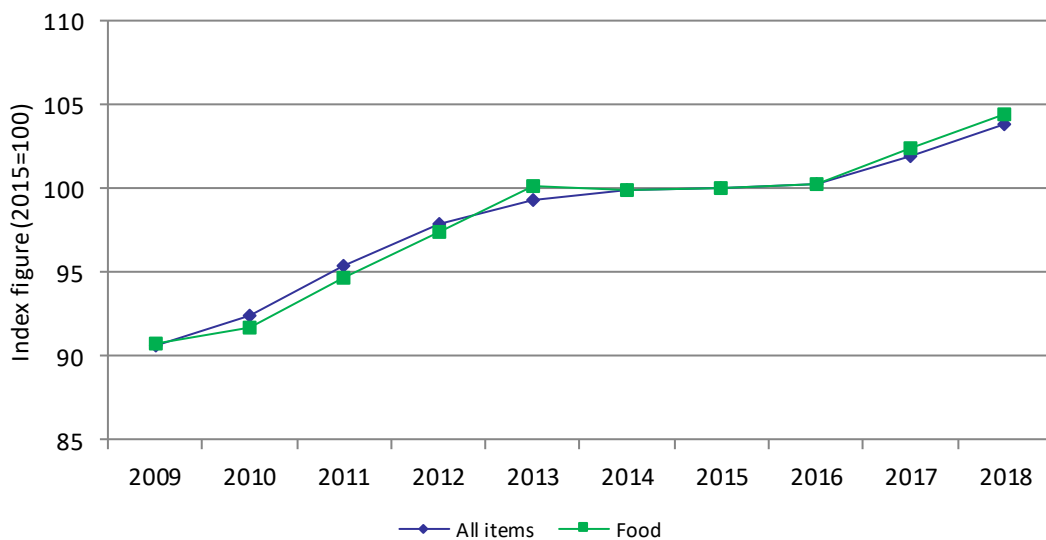
Updated: June 2019

(\*) Indicator A - see definition on page 12

### Evolution of agricultural input and output prices

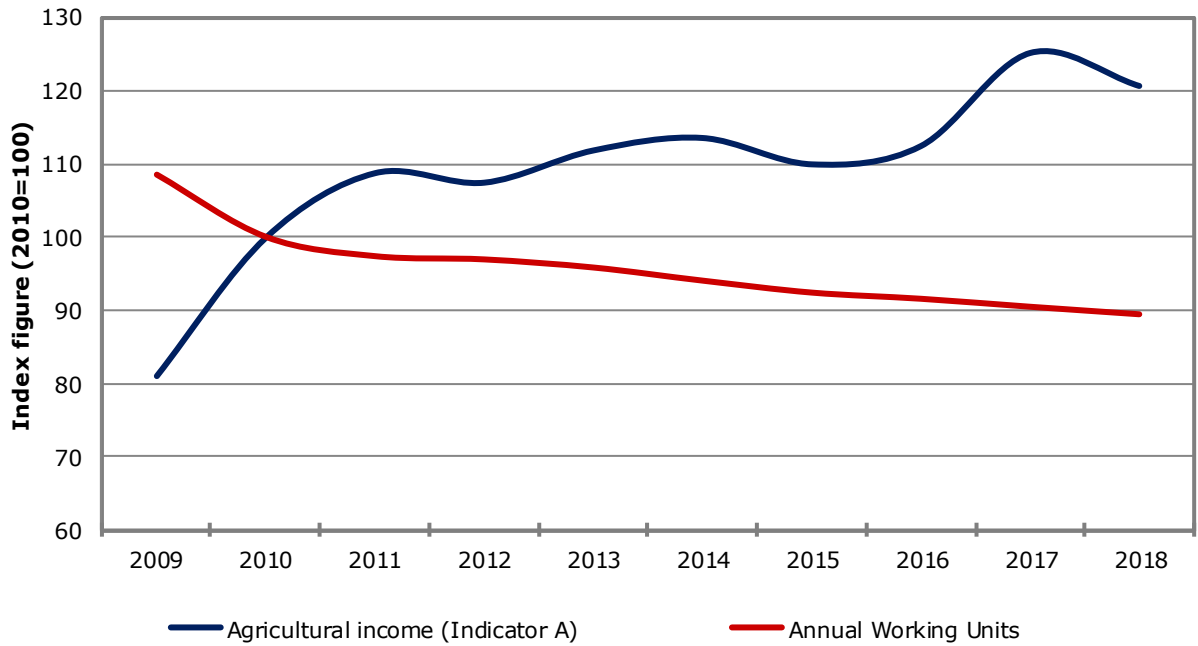


### Evolution of harmonized indices of consumer prices



Source: Eurostat  
Updated: June 2019

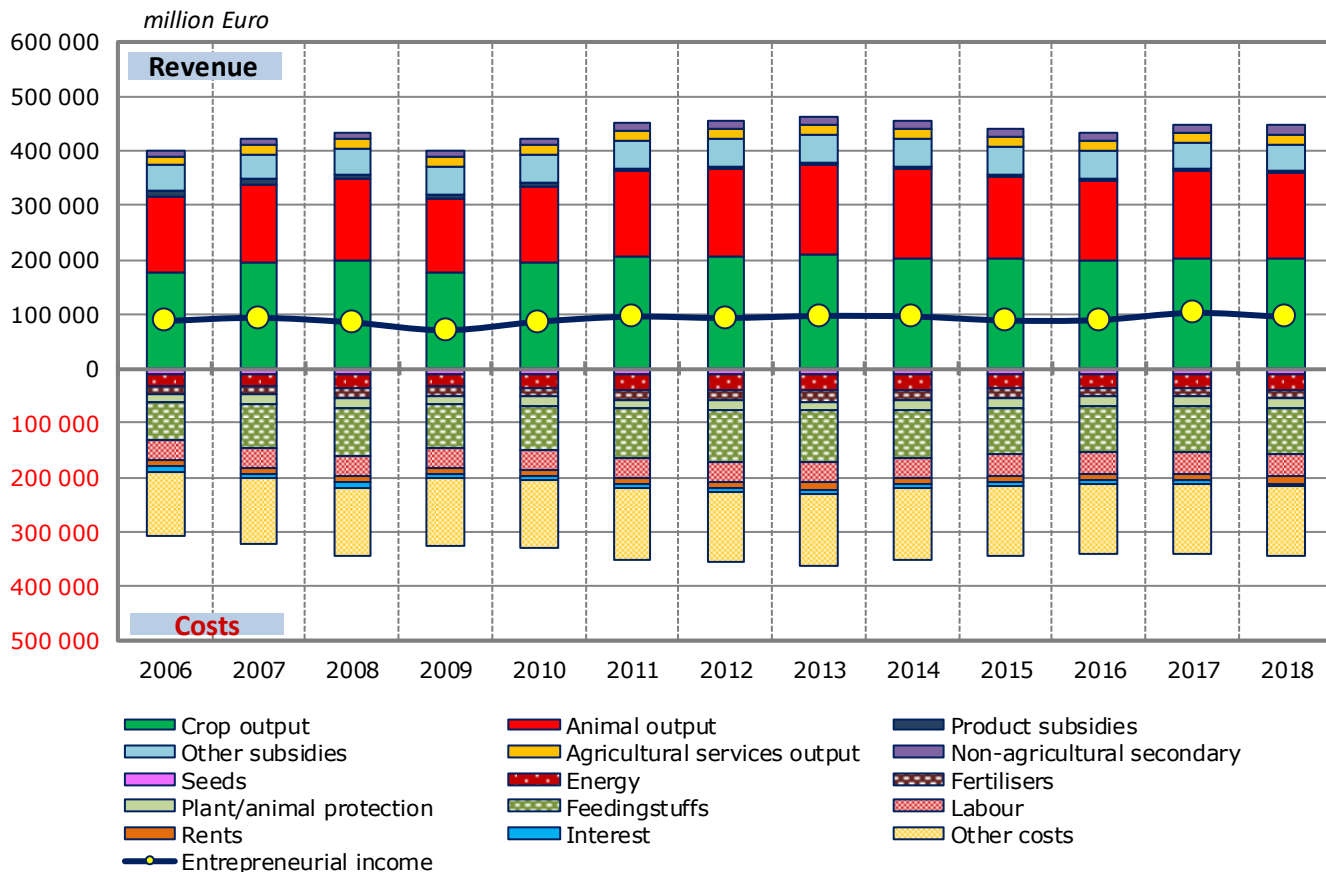
### Farmers' income and labour development index



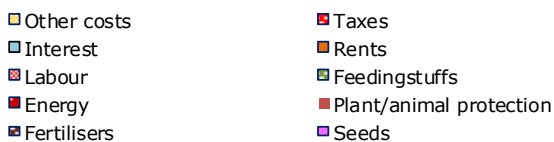
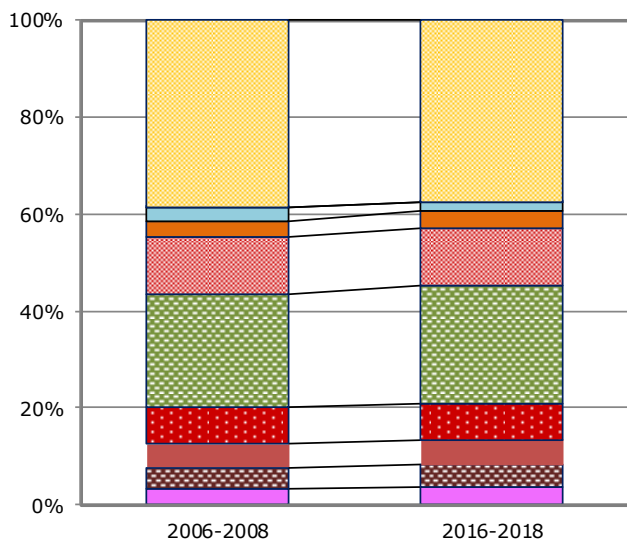
Source: Eurostat  
Updated: June 2019

## 3.8. AGRICULTURE: ECONOMIC ACCOUNTS

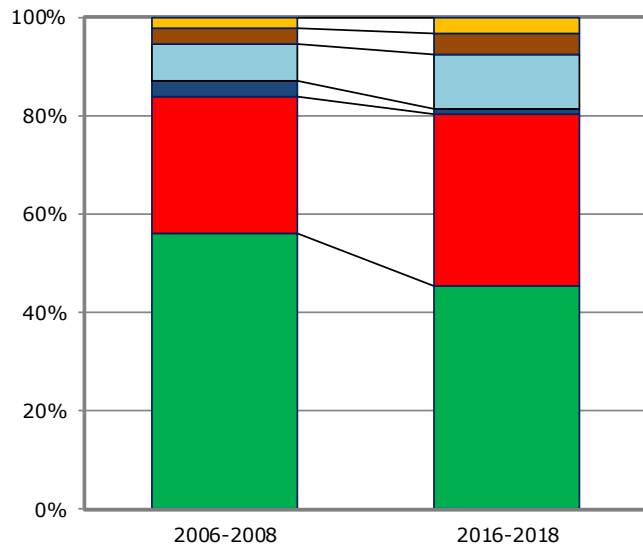
### Agricultural income (real terms)



#### Cost Structure



#### Revenue Structure





# European Union

## 4.1. AGRICULTURAL TRADE: EXTERNAL TRADE

### Agriculture trade between EU countries and the rest of the world (external trade)

By category of product	2018		% change 2018/2017
	Million EUR	% of total agricultural products	
<b>Exports</b>			
Commodities	22 918	16.7%	-2.6%
Other primary products	23 091	16.8%	-3.7%
Processed	27 197	19.8%	1.9%
Food preparations	30 667	22.3%	1.4%
Beverages	18 771	13.7%	3.7%
Non Edible	14 848	10.8%	-1.8%
<b>Total agricultural products</b>	<b>137 490</b>	<b>100.0%</b>	<b>-0.1%</b>
as % of total exports	7.0%		
<b>Imports</b>			
Commodities	46 847	40.3%	-4.2%
Other primary products	33 136	28.5%	1.6%
Processed	12 625	10.9%	-1.6%
Food preparations	7 990	6.9%	6.5%
Beverages	3 297	2.8%	6.8%
Non Edible	12 441	10.7%	-0.2%
<b>Total agricultural products</b>	<b>116 335</b>	<b>100.0%</b>	<b>-0.9%</b>
as % of total imports	5.9%		
<b>Balance</b>			
Commodities	-23 929		
Other primary products	-10 045		
Processed	14 572		
Food preparations	22 677		
Beverages	15 474		
Non Edible	2 407		
<b>Total agricultural products</b>	<b>21 155</b>		

Source: DG Agriculture and Rural Development, based on Comext data.

Updated: June 2019

## 4.2. AGRICULTURAL TRADE: INTRA-EU TRADE

### Evolution of agricultural trade among EU countries (internal trade)

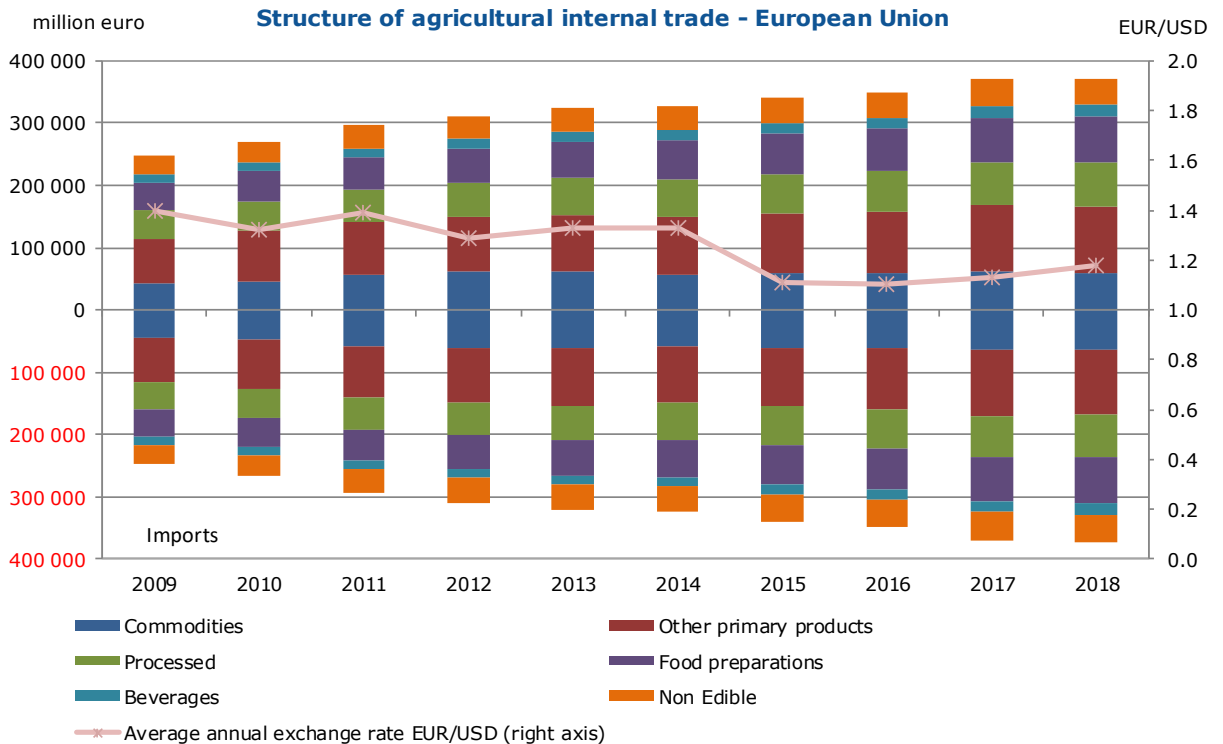
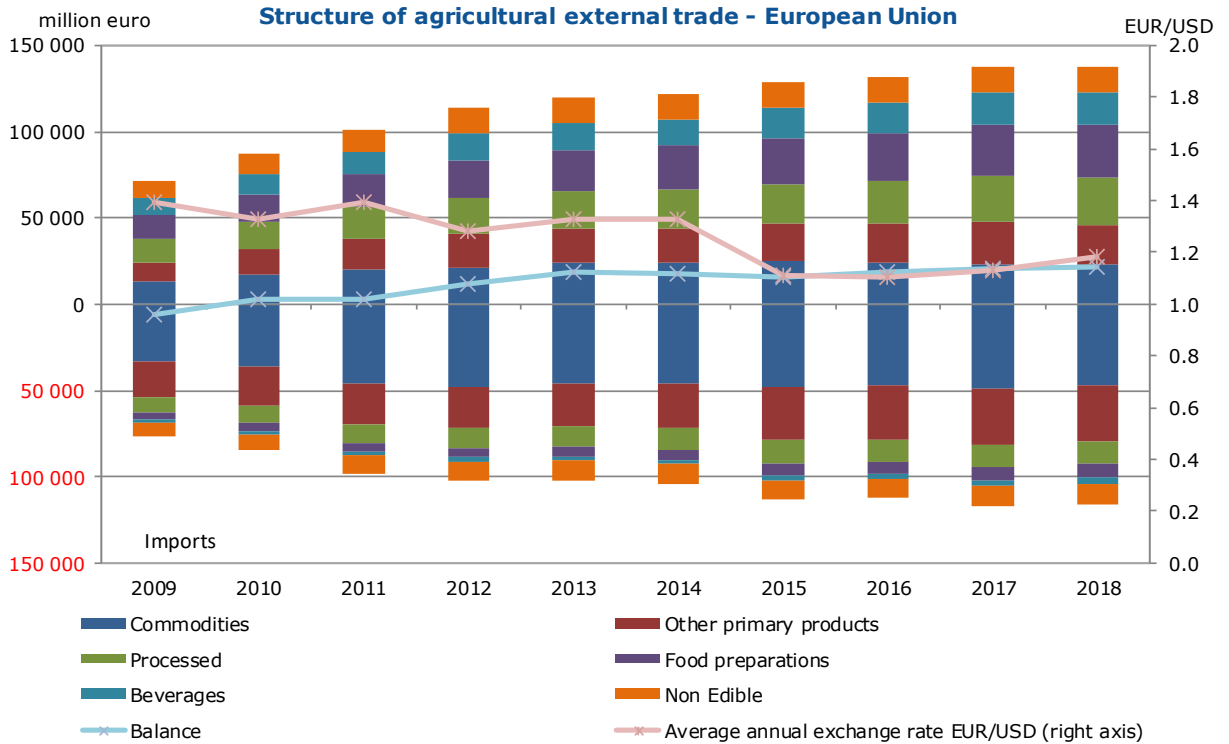
By category of product	2018		% change 2018/2017
	Million EUR	% of total agricultural products	
<b>Exports</b>			
Commodities	60 460	16.3%	-1.8%
Other primary products	105 119	28.3%	-1.3%
Processed	70 634	19.0%	1.6%
Food preparations	73 812	19.8%	3.0%
Beverages	19 795	5.3%	5.2%
Non Edible	42 128	11.3%	0.5%
<b>Total agricultural products</b>	<b>371 948</b>	<b>100.0%</b>	<b>0.5%</b>
as % of total exports	10.6%		
<b>Imports</b>			
Commodities	62 877	16.8%	-0.4%
Other primary products	104 835	28.1%	-1.2%
Processed	68 399	18.3%	2.1%
Food preparations	72 620	19.4%	3.1%
Beverages	19 040	5.1%	4.8%
Non Edible	45 958	12.3%	2.0%
<b>Total agricultural products</b>	<b>373 730</b>	<b>100.0%</b>	<b>1.0%</b>
as % of total exports	10.9%		
<b>Balance</b>			
Commodities	-2 417		
Other primary products	284		
Processed	2 236		
Food preparations	1 192		
Beverages	755		
Non Edible	-3 831		
<b>Total agricultural products</b>	<b>-1 782</b>		

Source: DG Agriculture and Rural Development, based on Comext data.

Updated: June 2019

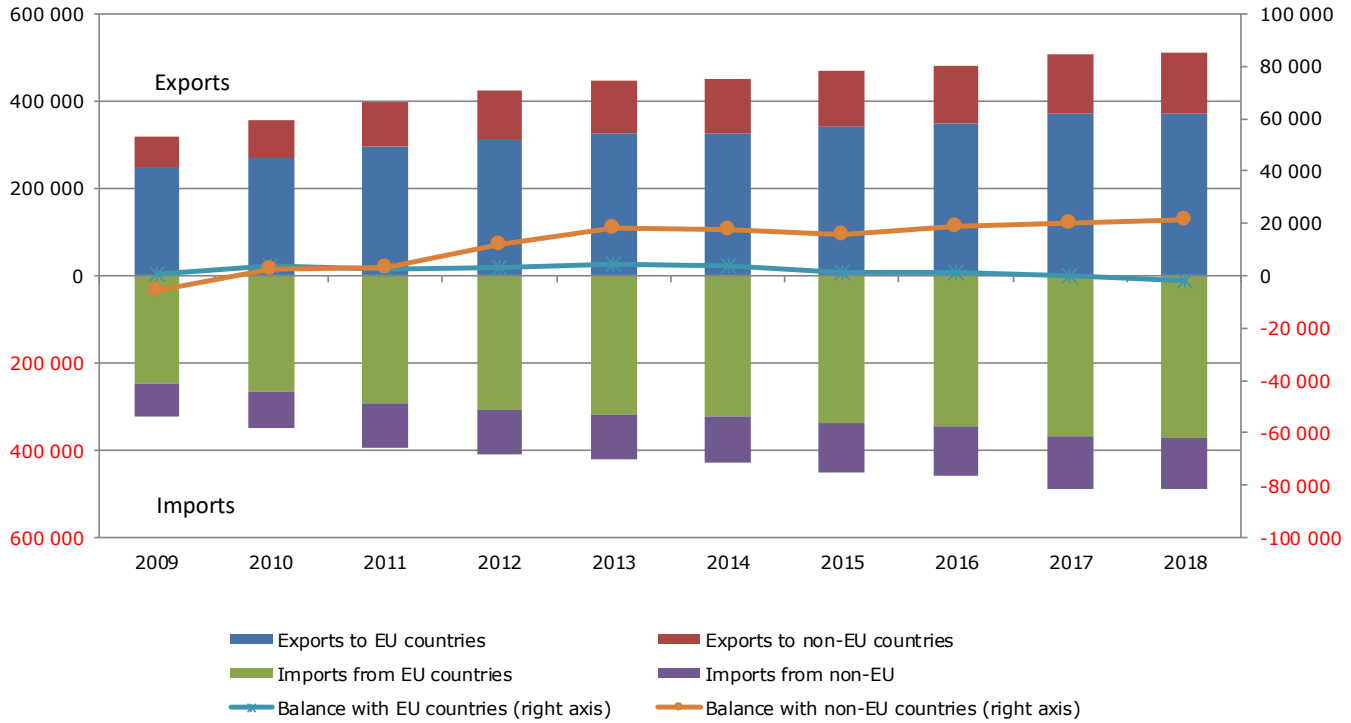
# European Union

## 4.3. AGRICULTURAL TRADE: STRUCTURE



## 4.3. AGRICULTURAL TRADE: STRUCTURE

Evolution of agricultural trade within the EU-28 (in million euro)



## 6.1. FARM STRUCTURE

### Structure of agricultural holdings (EU-28)

Holdings		2010		2013		2016	
		Total	%	Total	%	Total	%
By UAA (*)	< 5 ha	8 488 630	69.3%	7 184 430	66.3%	6 867 400	65.6%
	5-10 ha	1 338 810	10.9%	1 277 230	11.8%	1 264 590	12.1%
	10-20 ha	916 760	7.5%	888 540	8.2%	866 770	8.3%
	20-30 ha	382 630	3.1%	374 870	3.5%	362 480	3.5%
	30-50 ha	399 190	3.3%	387 730	3.6%	379 660	3.6%
	50-100 ha	393 920	3.2%	388 680	3.6%	381 500	3.6%
	> 100 ha	325 860	2.7%	336 740	3.1%	345 350	3.3%
By economic size (**)	< 4 000 €	7 398 530	60.4%	6 031 640	55.7%	5 680 170	54.3%
	4 000-7 999 €	1 528 830	12.5%	1 454 940	13.4%	1 392 910	13.3%
	8 000-14 999 €	981 790	8.0%	970 810	9.0%	966 450	9.2%
	15 000-24 999 €	602 070	4.9%	595 430	5.5%	604 760	5.8%
	25 000-49 999 €	627 140	5.1%	634 520	5.9%	624 220	6.0%
	50 000-99 999 €	466 510	3.8%	470 670	4.3%	465 970	4.5%
	100 000-249 999 €	411 810	3.4%	417 470	3.9%	429 240	4.1%
	250 000-499 999 €	148 600	1.2%	166 880	1.5%	187 450	1.8%
>500 000 €	80 610	0.7%	95 950	0.9%	116 640	1.1%	
By LSU (***)	0	5 395 700	44.1%	4 651 420	42.9%	4 804 340	45.9%
	0-5	4 966 740	40.6%	4 461 550	41.2%	4 028 750	38.5%
	5-10	494 500	4.0%	427 050	3.9%	382 460	3.7%
	10-15	239 560	2.0%	216 300	2.0%	201 080	1.9%
	15-20	159 720	1.3%	145 100	1.3%	138 930	1.3%
	20-50	447 390	3.7%	418 230	3.9%	398 410	3.8%
	50-100	252 340	2.1%	232 640	2.1%	221 310	2.1%
	100-500	257 560	2.1%	251 450	2.3%	256 460	2.4%
	> 500	32 310	0.3%	32 900	0.3%	35 470	0.3%
By age of holder	< 35 years	912 840	7.5%	644 360	5.9%	535 770	5.1%
	35-44 years	2 031 220	16.6%	1 654 510	15.3%	1 461 830	14.0%
	45-54 years	2 788 500	22.8%	2 489 490	23.0%	2 398 920	22.9%
	55-64 years	2 882 260	23.5%	2 683 630	24.8%	2 621 470	25.0%
	> 64 years	3 631 020	29.7%	3 366 290	31.1%	3 436 000	32.8%
<b>Total</b>	<b>12 245 700</b>	<b>100</b>	<b>10 838 290</b>		<b>10 467 760</b>	<b>100</b>	
UAA (ha)	175 845 490		174 613 900		173 338 550		
average farm size (ha UAA per holding)	14.4		16.1		16.6		

Source: Eurostat, Farm Structure Survey 2010, 2013 and 2016. Updated: June 2019

(\*) UAA = Utilized agricultural area.

(\*\*) Economic size: The standard output of an agricultural product (crop or livestock), abbreviated as SO, is the average monetary value of the agricultural output at farm-gate price, in euro per hectare or per head of livestock. There is a regional SO coefficient for each product, as an average value over a reference period. The sum of all the SO per hectare of crop and per head of livestock in a farm is a measure of its overall economic size, expressed in euro.

(\*\*\*) LSU = Livestock units. A LSU is equivalent to a dairy cow. The number of animals (heads) is converted into LSU using a set of coefficients reflecting the feed requirements of the different animal categories.

## 6.2. FARM STRUCTURE

### Structure of the farm labour force

	Holders	Members of the holder's family	total family labour force	Regular non family labour force	Non regular non family labour force	total non-family labour force
<b>2013</b>						
persons:	10 398 890	9 800 500	20 199 360	2 005 920	Data not available	
of which women:	30.0%	57.6%	43.4%	35.1%		
AWUs (*):	4 189 700	3 081 650	7 271 360	1 460 240	774 770	2 235 010
<b>2016</b>						
persons:	9 894 590	8 139 720	18 034 310	not yet available	Data not available	
of which women:	30.8%	55.2%	41.8%	not yet available		
AWUs:	4 045 300	2 665 730	6 711 030	1 519 620		
<b>Total farm labour force (persons)</b>			<b>2013**</b>	22 205 300		
<b>Total farm labour force (AWUs)</b>			<b>2016</b>	8 945 850		

\* AWUs = Annual work units. An AWU is equivalent to a worker employed on a full time basis for one year.

\*\* Values for 2016 are not yet available

### Evolution of the regular agricultural labour force



This document does not necessarily represent the official views of the European Commission  
© European Union, 2019 - Reproduction authorised provided the source is acknowledged

Contact: DG Agriculture and Rural Development, Farm Economics Unit

Tel: +32-2-29 75471 / E-mail: [Agri-C3@ec.europa.eu](mailto:Agri-C3@ec.europa.eu)