



European
Commission

June 2020

Statistical Factsheet

Czechia



CONTENTS

Main figures	1
1. KEY DATA	2
2. POPULATION & ECONOMY	3
3. FINANCIAL ASPECTS	4-5
4. ECONOMIC ACCOUNTS	6-12
5. AGRICULTURAL TRADE	13-14
6. FARM STRUCTURE	15-16

Main figures - Year 2019

Population (1 st January)	10 649 800	persons
Area*	78 871	km ²
Currency	CZK	Czech koruna
Nominal GDP at current prices	220 197	million EUR
GDP per capita at current prices	20 638	EUR
GDP per capita at purchasing power	29 115	PPS
Harmonised index of consumer prices	2.6%	change over previous year
Unemployment rate	2	% of labour force
Exports (goods & services)	166 217	million EUR (current prices)
Imports (goods & services)	152 796	million EUR (current prices)
Balance (goods & services)	13 421	million EUR (current prices)
Exports of agricultural products	7 612	million EUR
Imports of agricultural products	9 533	million EUR
Current account balance	-0.4	% of GDP
General government balance	0.3	% of GDP
General government gross debt	30.8	% of GDP

Sources: European Commission, Eurostat, and Directorate General for Economic and Financial Affairs.

Updated: June 2020

* Data refer to the year

2016

1. KEY DATA

Macroeconomics				
Population (new European Commission methodology)				
Total population (number of persons), of which:	2019	10 649 800	2.4%	of EU27_2020
in predominantly rural regions (PR)	2019	21.2%	20.5%	in EU27_2020
in intermediate regions	2019	53.7%	39.1%	in EU27_2020
in predominantly urban regions	2019	25.1%	40.4%	in EU27_2020
Population in PR regions (number of persons)	2019	2 256 395	2.5%	of EU27_2020
GDP				
In EUR (current prices):				
total (million EUR)	2019	220 197	1.6%	of EU27_2020
GDP per capita (EUR/person)	2019	20 638	31 094	in EU27_2020
GDP per capita (PPS/person)	2019	29 115	31 744	in EU27_2020
Real GDP growth rate (% change over previous year)	2019	2.6%	1.5%	in EU27_2020
Gross value added				
Agriculture, forestry and fishing (% of total GVA)	2019	2.1%	1.8%	in EU27_2020
Financial aspects				
Agricultural expenditure				
Total expenditure (million EUR), of which:	2019	1 193.9	2.2%	of EU27_2020
Direct payments (%)	2019	71.6%	70.0%	in EU27_2020
Market measures (%)	2019	1.4%	4.5%	in EU27_2020
Rural development (%)	2019	27.1%	25.5%	in EU27_2020
Economic accounts of agriculture				
Agricultural output				
Agricultural goods output (million EUR), of which:	2019	5 200.9	1.3%	of EU27_2020
Crop output, of which:		57.5%	1.4%	of EU27_2020
Cereals (including seeds)		23.1%	2.6%	of EU27_2020
Industrial crops		13.1%	3.8%	of EU27_2020
Forage plants		10.3%	2.3%	of EU27_2020
Vegetables and horticultural products		5.5%	0.5%	of EU27_2020
Potatoes		2.7%	1.0%	of EU27_2020
Fruits		1.0%	0.2%	of EU27_2020
Wine		0.8%	0.2%	of EU27_2020
Olive oil		0.0%	0.0%	of EU27_2020
Animal output, of which:		39.6%	1.3%	of EU27_2020
Cattle		5.6%	1.0%	of EU27_2020
Pigs		6.5%	0.9%	of EU27_2020
Sheep and goats		0.2%	0.2%	of EU27_2020
Poultry		5.2%	1.4%	of EU27_2020
Milk		20.3%	1.9%	of EU27_2020
Eggs		1.9%	1.1%	of EU27_2020
Gross value added at basic prices (million EUR)	2019	1 661.7	0.9%	of EU27_2020
Agricultural input				
Total intermediate consumption (million EUR)	2019	3 716.6	1.6%	of EU27_2020
Agricultural income				
Indicator A (% change over previous year)	2019	-0.6%	2.4%	in EU27_2020
Farm structure				
Holdings				
Total (No), of which:	2016	26 530	0.3%	of EU27_2020
UAA < 5 ha (%)	2016	18.7%	66.6%	in EU27_2020
Economic size < 4 000 €	2016	15.7%	54.9%	in EU27_2020
Holder < 35 years (%)	number	4.4%	5.1%	in EU27_2020
Holder > 64 years (%)	number	26.8%	32.8%	in EU27_2020
UAA per holding (ha)	Total	130.2	15.2	in EU27_2020
Labour force				
AWU (No)	2016	103 260	1.2%	of EU27_2020
Female farm holders (%)	2016	12.6%	30.7%	in EU27_2020
Male farm holders (%)	2016	87.4%	68.8%	in EU27_2020
Agriculture in % of total employment	2019	2.6%	4.1%	in EU27_2020

Sources: European Commission, Eurostat and Directorate General for Agriculture and Rural Development.

Updated: June 2020

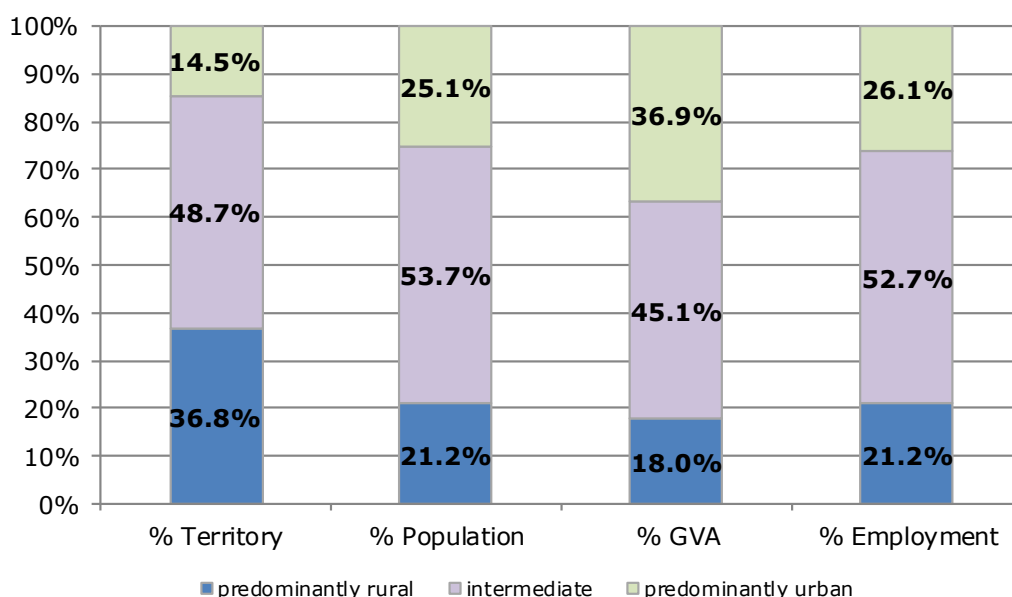
2. POPULATION AND ECONOMY

Importance of rural areas

	Territory (km ²)	Population (persons)	GVA (Million EUR)	Employment (persons)
Year	2016	2019	2016	2018
Predominantly Rural Regions	29 022	2 256 395	28 585	1 091 200
Intermediate Regions	38 424	5 715 441	71 486	2 714 600
Predominantly Urban Regions	11 425	2 677 964	58 464	1 341 100
Total	78 871	10 649 800	158 535	5 146 900

Source: Eurostat.

Updated: June 2020



Economic forecast

Indicators	2012	2013	2014	2015	2016	2017	2018	2019	2020	2021
GDP										
In million EUR (current prices)	161 434	157 743	156 661	168 472	176 368	191 723	207 570	220 197	201 369	212 048
Per capita (in PPS; current prices)	21 962	22 408	23 791	25 332	25 642	26 816	28 013	29 115	27 516	29 193
% change over previous period										
GDP growth (at constant prices)	7.7%	-0.5%	2.7%	5.3%	2.5%	4.4%	2.8%	2.6%	-6.2%	5.0%
GDP deflator	-0.8%	-1.8%	-3.3%	2.1%	2.2%	4.2%	5.3%	3.4%	-2.5%	0.3%
Harmonised index of consumer prices	3.5%	1.4%	0.4%	0.3%	0.6%	2.4%	2.0%	2.6%	2.3%	1.9%
Exports (goods and services)	4.3%	0.2%	8.7%	6.0%	4.3%	6.7%	4.4%	1.2%	-13.3%	9.6%
Imports (goods and services)	2.7%	0.1%	10.1%	6.8%	2.8%	5.9%	5.9%	1.7%	-13.0%	9.6%
Net exports of goods and services (million EUR)	7 753	9 092	9 971	10 106	13 610	14 424	13 268	13 421	10 155	10 936
% of total employment										
Unemployment rate	7.0	7.0	6.1	5.1	4.0	2.9	2.2	2.0	5.0	4.2
% of GDP										
Current account balance	-1.6	-0.5	0.2	0.2	1.6	1.7	0.4	-0.4	-1.7	-1.2
General government balance	-3.9	-1.2	-2.1	-0.6	0.7	1.5	0.9	0.3	-6.7	-4.0
General government gross debt	44.5	44.9	42.2	40.0	36.8	34.7	32.6	30.8	38.7	39.9

Source: European Commission, Eurostat and Directorate General for Economic and Financial Affairs

Updated: June 2020

Data for 2020 and 2021 are forecasts

3.1. AGRICULTURE: FINANCIAL ASPECTS

CAP expenditure

Measures	2019	2019	
	1 000 EUR	% of total	% of heading
Decoupled direct aids	716 445	60.0%	83.9%
Other direct aids	126 948	10.6%	14.9%
Additional amounts of aid	0	0.0%	0.0%
Reimbursement of direct aids in relation to financial discipline	10 933	0.9%	1.3%
Direct payments	854 326	71.6%	100.0%
Olive oil	0	0.0%	0.0%
Textile plants	0	0.0%	0.0%
Fruit and vegetables	3 895	0.3%	23.9%
Wine sector	5 102	0.4%	31.3%
Promotion	197	0.0%	1.2%
Other plant products/measures	0	0.0%	0.0%
Milk and milk products	-232	0.0%	-1.4%
Beef and veal	0	0.0%	0.0%
Sheepmeat and goatmeat	0	0.0%	0.0%
Pigmeat, eggs, poultry and other	1 250	0.1%	7.7%
School schemes*	6 107	0.5%	37.4%
Market measures	16 319	1.4%	100%
Rural development	323 242	27.1%	100%
TOTAL	1 193 887	100.0%	

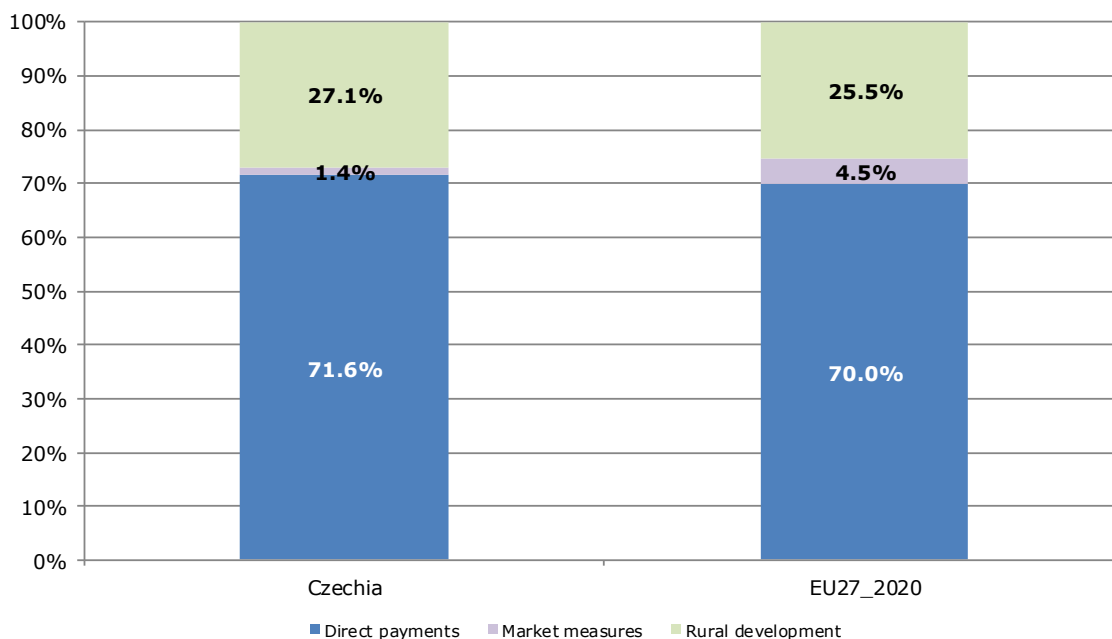
Note: Expenditure in commitments for direct payments and market measures; ceilings of support for rural development.

* Programme implementation based on school years; reimbursement possible in the next financial year

Source: European Commission, Directorate General for Agriculture and Rural Development

Updated: June 2020

Distribution of CAP expenditure



3.2. AGRICULTURE: FINANCIAL ASPECTS

Distribution of direct aids to the producers

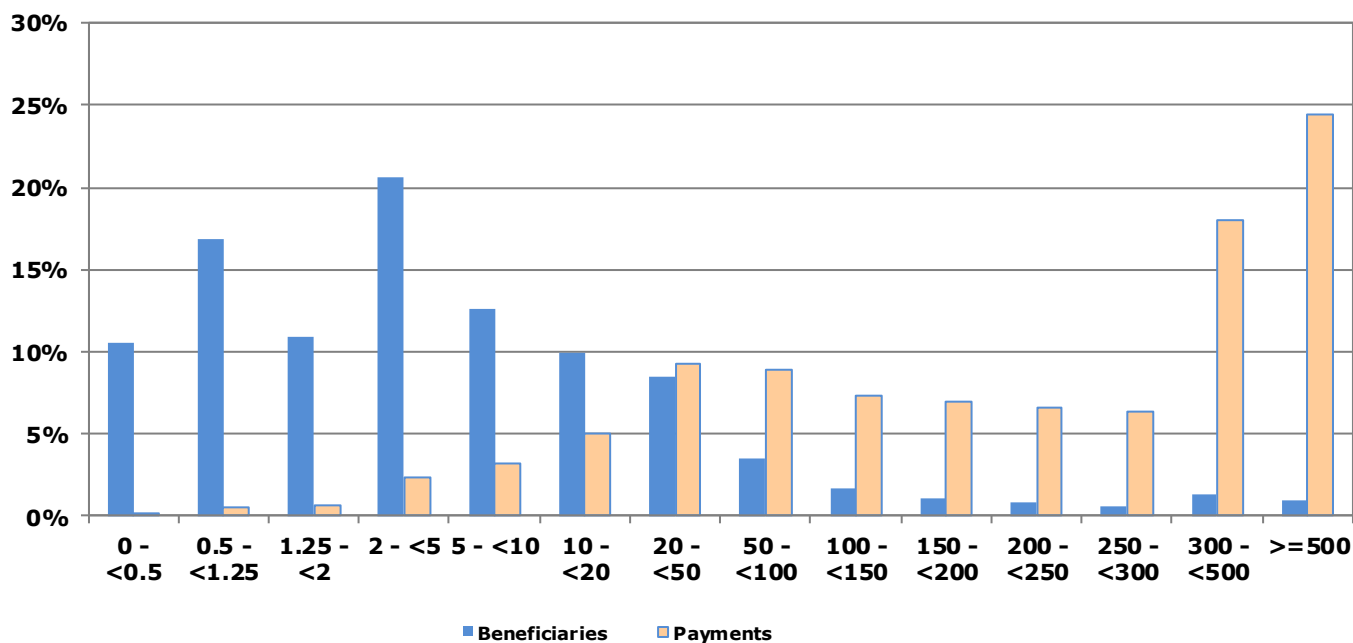
Size-class of aid (all direct payments)	Financial year 2018*			
	Beneficiaries		Payments in EUR	
	x 1 000	% of total	x 1 000	% of total
< 0 €	-	0.00%	0	0.0%
≥ 0 and < 500 €	3.14	10.50%	1 065	0.1%
≥ 500 and < 1 250 €	5.04	16.87%	4 216	0.5%
≥ 1 250 and < 2 000 €	3.27	10.95%	5 260	0.6%
≥ 2 000 and < 5 000 €	6.16	20.61%	19 972	2.4%
≥ 5 000 and < 10 000 €	3.76	12.57%	26 784	3.2%
≥ 10 000 and < 20 000 €	2.97	9.95%	42 320	5.1%
≥ 20 000 and < 50 000 €	2.54	8.50%	77 193	9.3%
≥ 50 000 and < 100 000 €	1.06	3.53%	74 662	9.0%
≥ 100 000 and < 150 000 €	0.50	1.68%	61 462	7.4%
≥ 150 000 and < 200 000 €	0.34	1.13%	58 419	7.0%
≥ 200 000 and < 250 000 €	0.25	0.83%	54 930	6.6%
≥ 250 000 and < 300 000 €	0.20	0.65%	53 266	6.4%
≥ 300 000 and < 500 000 €	0.40	1.32%	150 479	18.0%
≥ 500 000 €	0.27	0.91%	204 124	24.5%
Total	29.89	100%	834 152	100%

Source: European Commission, Directorate General for Agriculture and Rural Development.

* Figures for financial year 2019 will become available during the second half of 2020.

Note: In order to protect the anonymity of the beneficiaries, numbers less than 10 have been made invisible in this table.

Indicative figures on the distribution of direct aid by size-class of aid (1 000 EUR)



4.1. AGRICULTURE: ECONOMIC ACCOUNTS

Agricultural output

Output components (constant prices)	2017	2018	2019		
	Million EUR		Million EUR	% of total	% of EU27_2020
Cereals:	1 031	1 065	1 059	23.8%	2.5%
Wheat and spelt	640	665	655	15%	3.3%
Rye and meslin	16	19	22	1%	2.1%
Barley	248	256	259	6%	3.3%
Oats and summer cereal mixtures	20	25	24	1%	2.0%
Grain maize	84	75	74	2%	0.8%
Rice	0	0	0	0%	0.0%
Other cereals	23	25	25	1%	1.4%
Industrial crops:	696	706	601	13.5%	3.7%
Oil seeds and oleaginous fruits	483	537	450	10%	5.3%
Protein crops	22	18	16	0%	1.4%
Raw tobacco	0	0	0	0%	0.0%
Sugar beet	130	106	85	2%	3.5%
Other industrial crops	61	45	50	1%	1.4%
Forage plants	452	405	473	10.6%	2.2%
Vegetables and horticultural products	248	236	254	5.7%	0.5%
Potatoes	102	96	124	2.8%	1.0%
Fruits	50	61	46	1.0%	0.2%
Wine	45	53	37	1%	0.2%
Olive oil	0	0	0	0%	0.0%
Other crop products	51	43	41	1%	1.8%
Crop output	2 676	2 666	2 634	59.2%	1.3%
Animals:	817	776	800	18.0%	0.9%
Cattle	262	266	255	5.7%	1.0%
Pigs	332	280	298	6.7%	0.8%
Equines	0	0	0	0.0%	0.0%
Sheep and goats	6	7	8	0.2%	0.2%
Poultry	215	221	239	5.4%	1.3%
Other animals	1	1	1	0.0%	0.0%
Animal products:	1 039	1 042	1 015	22.8%	1.7%
Milk	928	942	927	20.8%	1.9%
Eggs	108	98	85	1.9%	1.0%
Other animal products	4	3	2	0.1%	0.1%
Animal output	1 856	1 818	1 815	40.8%	1.3%
Agricultural goods output	4 532	4 484	4 449	100.0%	1.3%

Updated: June 2020

Note: 2019 data are estimates and may still change.

Source: Eurostat, Economic Accounts for Agriculture (values at real producer prices).

4.2. AGRICULTURE: ECONOMIC ACCOUNTS

Agricultural input

Input components	2017	2018	2019	2018/2017	2019/2018
	Million EUR			% Change	
Seeds and planting stock	159.4	168.2	169.1	5.6%	0.5%
Energy	502.8	511.3	506.2	1.7%	-1.0%
Fertilisers and soil improvers	245.8	248.5	263.6	1.1%	6.1%
Plant protection products	205.0	193.9	193.0	-5.4%	-0.5%
Veterinary expenses	124.1	133.1	127.3	7.3%	-4.3%
Feedingstuffs	1 145.9	1 147.0	1 165.1	0.1%	1.6%
Maintenance of materials	193.0	193.1	195.9	0.1%	1.4%
Maintenance of buildings	129.0	130.1	131.9	0.8%	1.5%
Agricultural services	137.9	128.7	128.7	-6.7%	0.0%
Other goods and services	345.1	349.0	342.2	1.1%	-2.0%
Total intermediate consumption	3 238.7	3 251.0	3 271.1	0.4%	0.6%
Fixed capital consumption	675.6	699.3	684.2	3.5%	-2.2%

Note: 2019 data are estimates and may still change.

Source: Eurostat, Economic Accounts for Agriculture: values at real basic prices (2010 = 100)

Updated: June 2020

Agricultural income

Values at basic prices	2017	2018	2019	2018/2017	2019/2018
	Million EUR			% Change	
Output of the agricultural "industry":	4 829.7	4 773.7	4 733.6	-1.2%	-0.8%
Crop output	2 676.5	2 665.5	2 634.2	-0.4%	-1.2%
Animal output:	1 855.5	1 818.2	1 814.6	-2.0%	-0.2%
<i>Animals</i>	816.5	775.8	800.0	-5.0%	3.1%
<i>Animal products</i>	1 039.0	1 042.5	1 014.6	0.3%	-2.7%
Agricultural services	137.9	128.7	128.7	-6.7%	0.0%
Secondary activities	159.8	161.3	156.2	0.9%	-3.2%
- Intermediate consumption	3 238.7	3 251.0	3 271.1	0.4%	0.6%
= Gross value added at basic prices	1 591.0	1 522.7	1 462.5	-4.3%	-4.0%
- Consumption of fixed capital	675.6	699.3	684.2	3.5%	-2.2%
- Taxes	43.2	42.2	40.6	-2.3%	-3.8%
+ Subsidies	1 167.2	1 158.2	1 189.0	-0.8%	2.7%
= Factor income	2 039.4	1 939.4	1 926.8	-4.9%	-0.7%
Agricultural income* (2010=100)	150.4	143.4	142.5	-4.7%	-0.6%

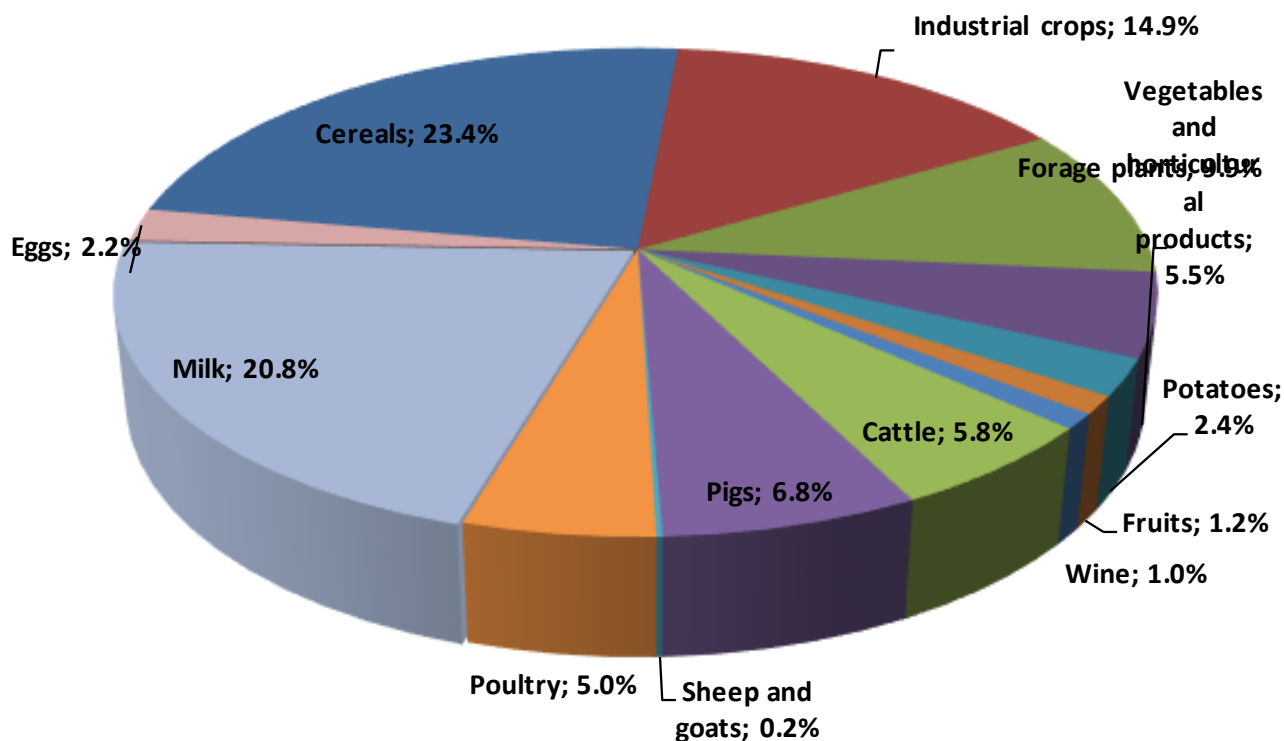
Note: 2019 data are estimates and may still change.

Source: Eurostat, Economic Accounts for Agriculture (values at real prices; constant prices for "Indicator A - see definition at the end of this document).

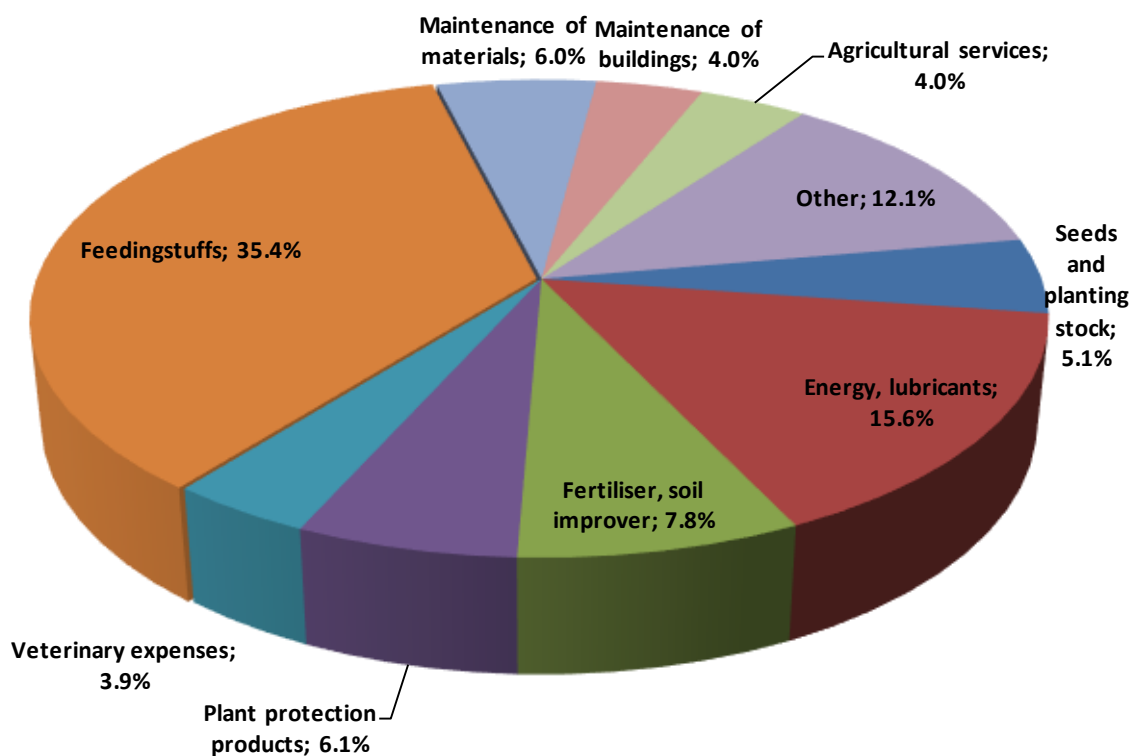
Updated: June 2020

4.3. AGRICULTURE: ECONOMIC ACCOUNTS

Output components (2017-2019 average)



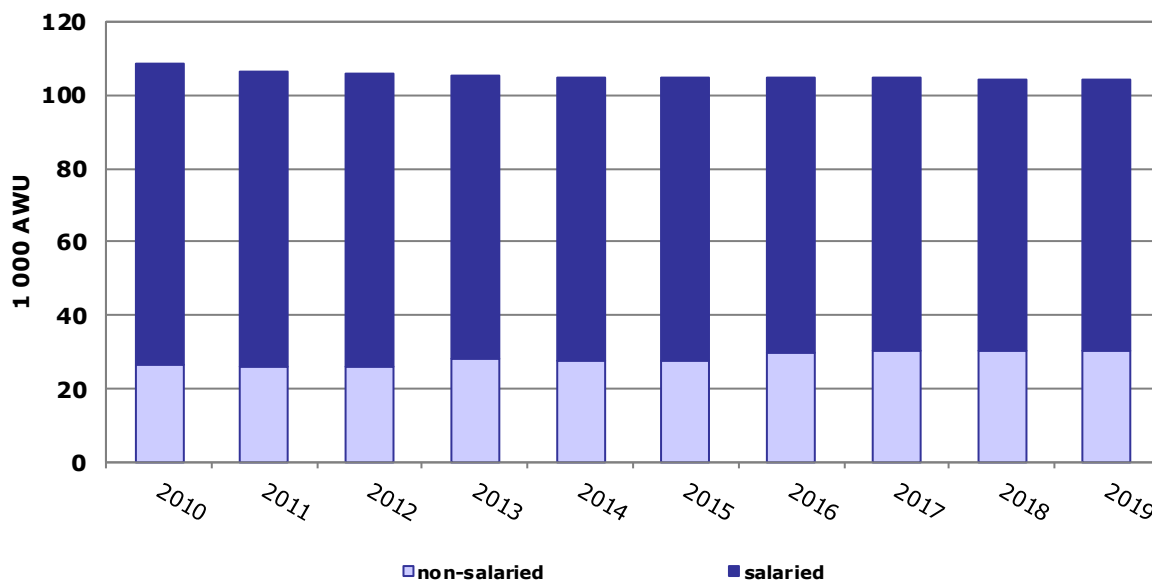
Intermediate consumption (2017-2019 average)



Source: Eurostat, Economic Accounts for Agriculture (values at real basic price)
Updated: June 2020

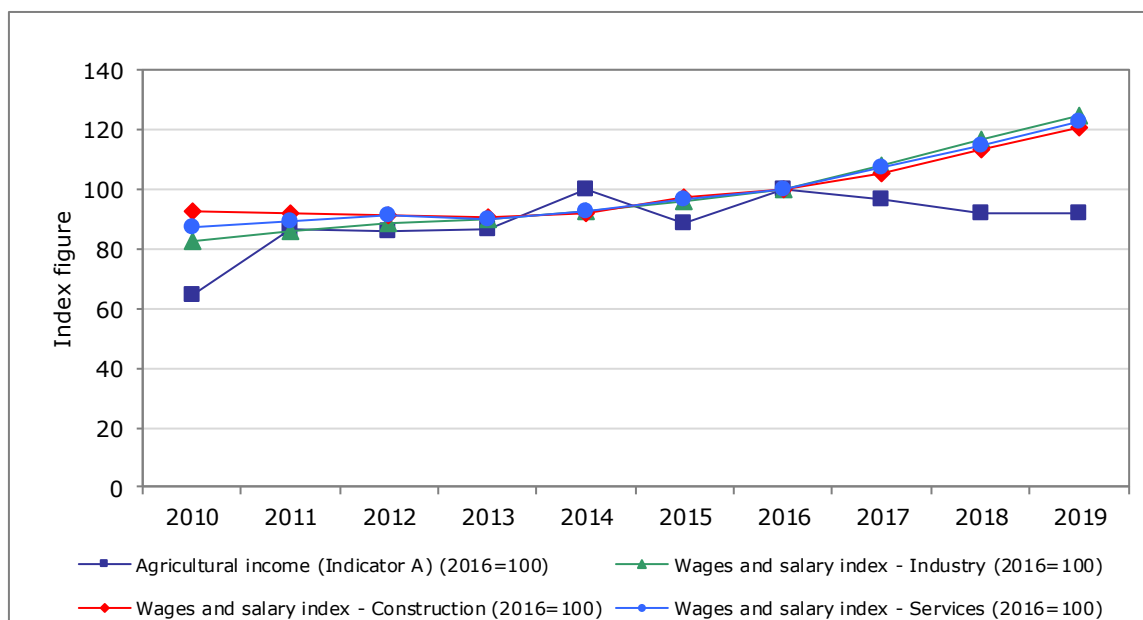
4.4. AGRICULTURE: ECONOMIC ACCOUNTS

Evolution of agricultural labour input



Source: Eurostat Updated: June 2020

Evolution of agricultural income (*) compared to wages and salaries in other sectors of the economy

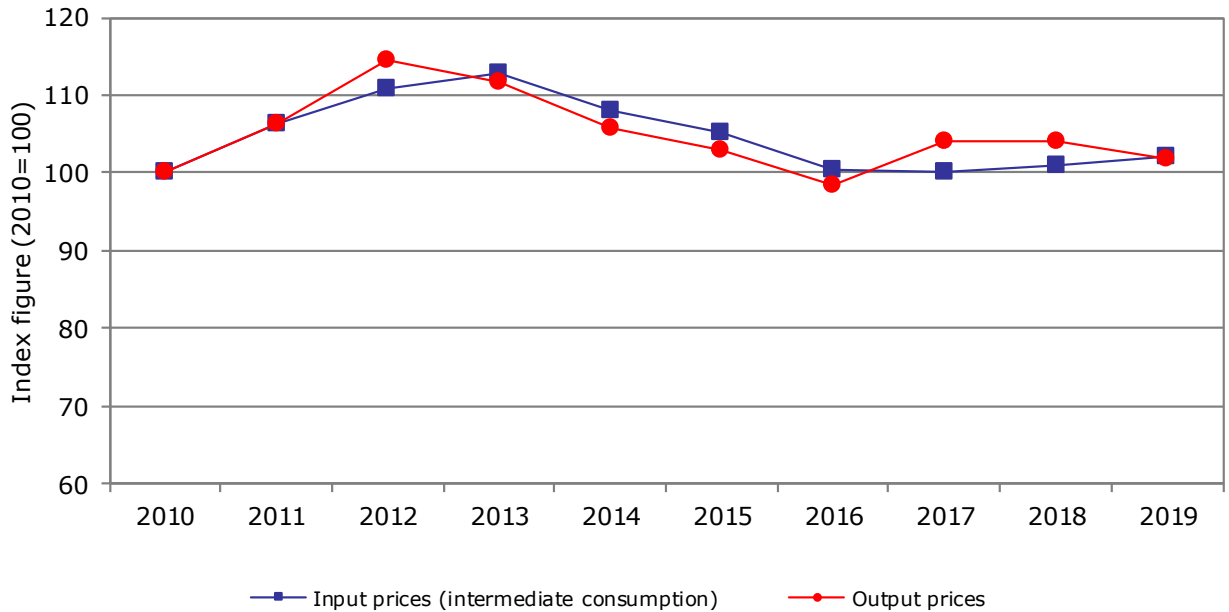


Source: Eurostat Updated: June 2020

(*) The so-called indicator A is the real net value added at factor cost of agriculture per annual work unit (AWU). The net value added at factor cost (factor income) is calculated by subtracting the consumption of fixed capital from gross value added at basic prices and adding the value of subsidies less taxes. The AWU is defined as the work volume corresponding to one full-time employed worker.

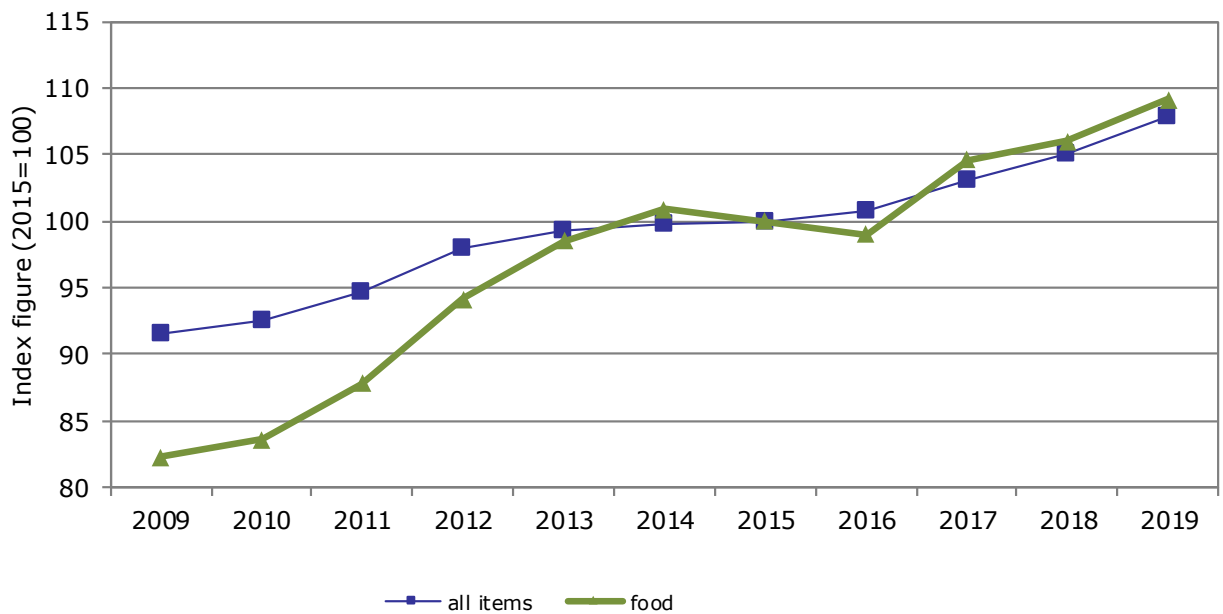
4.5. AGRICULTURE: ECONOMIC ACCOUNTS

Evolution of agricultural input and output prices



Source: Eurostat Updated: June 2020

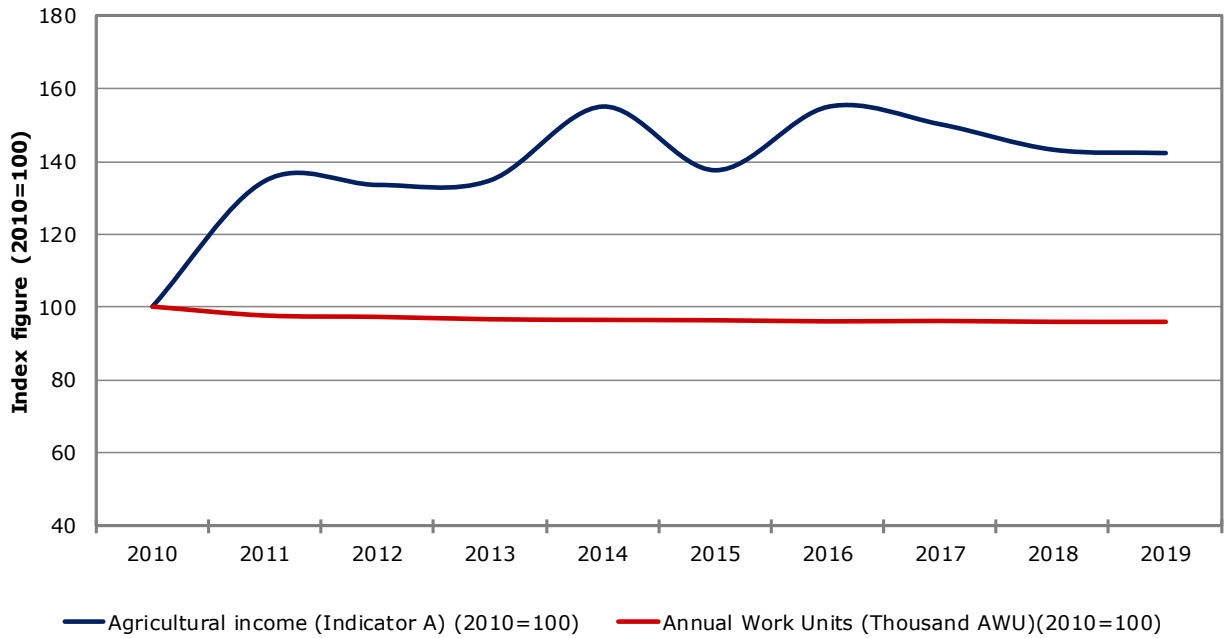
Evolution of harmonised indices of consumer prices



Source: Eurostat Updated: June 2020

4.6. AGRICULTURE: ECONOMIC ACCOUNTS

Farmers' income and labour development index (real terms)

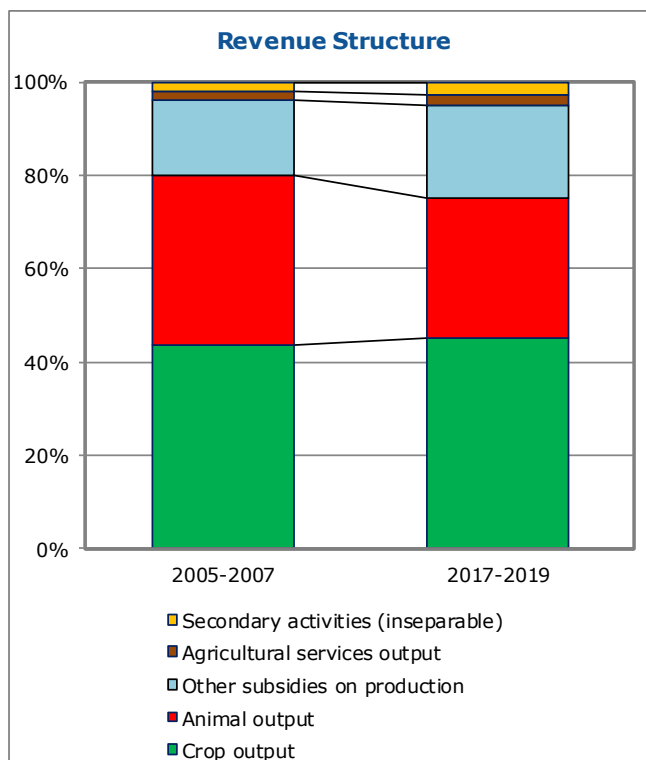
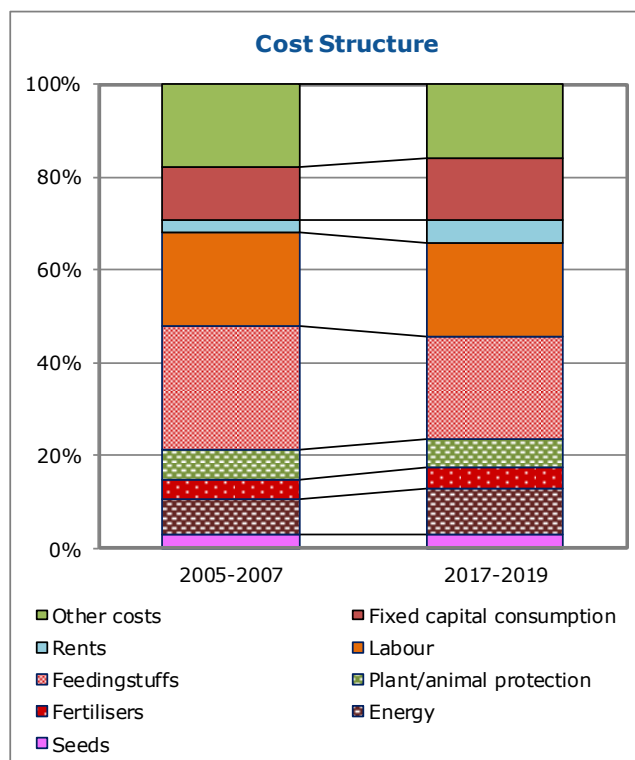
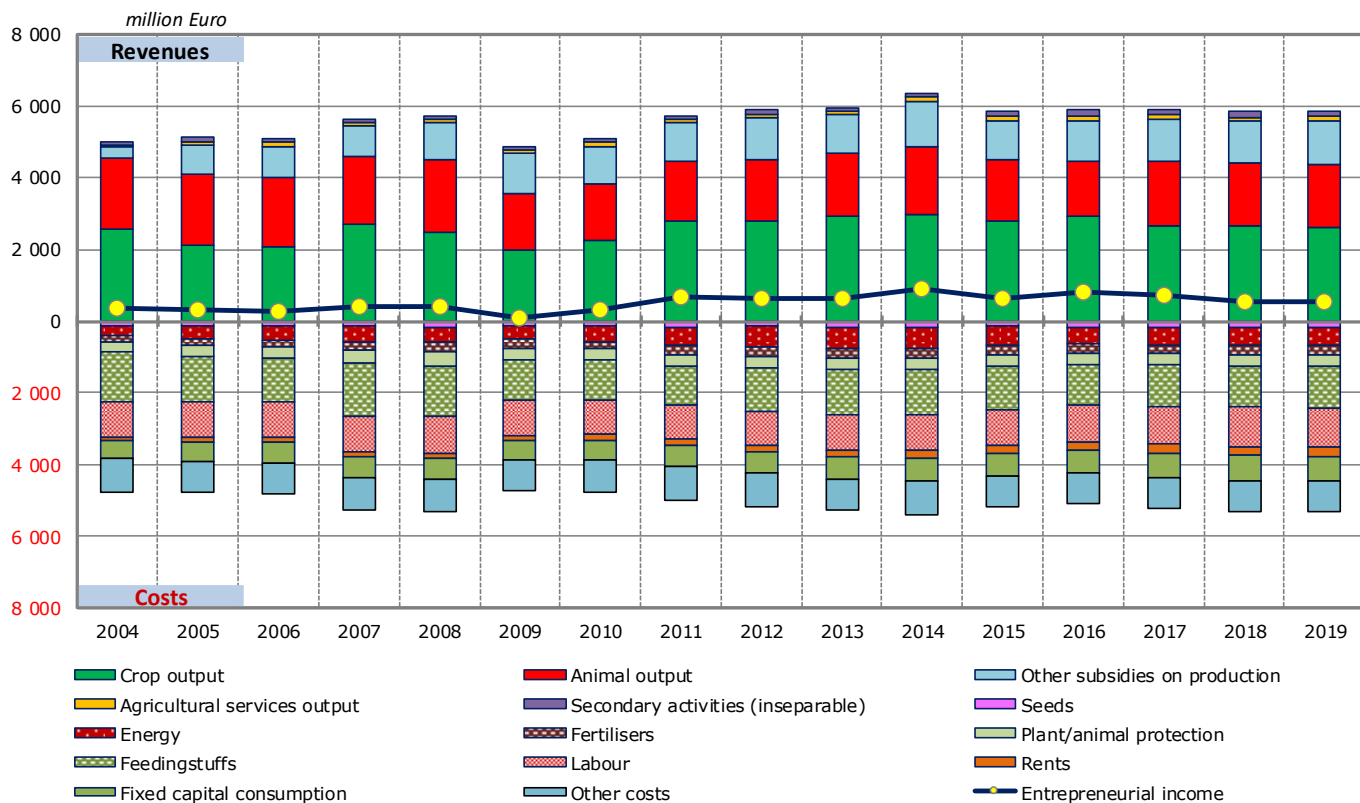


Source: Eurostat and DG Agriculture and Rural Development

Updated: June 2020

4.7. AGRICULTURE: ECONOMIC ACCOUNTS

Agricultural income (real prices)



Source: Eurostat Updated: June 2020

5.1. AGRICULTURAL TRADE

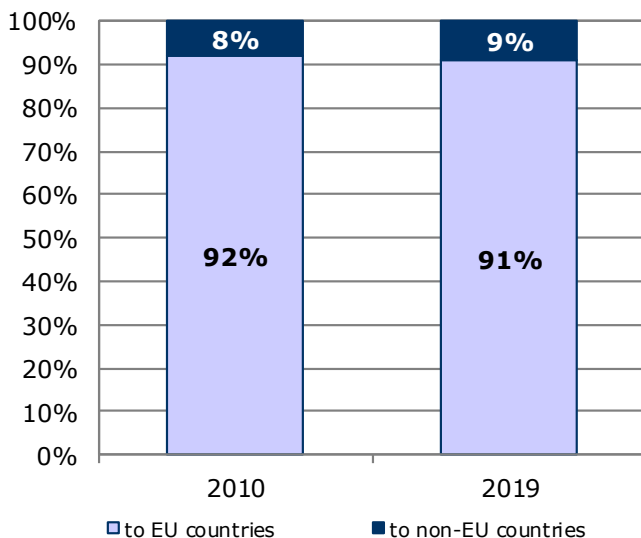
Agricultural trade in 2019

By category of product	Total trade	Trade with EU countries		Trade with non-EU countries	
	Million EUR	Million EUR	% change 2019/2018	Million EUR	% change 2019/2018
Exports					
Commodities	1 699.6	1 547.8	4.8%	151.1	2.90%
Other primary products	1 322.2	1 189.6	-1.6%	131.7	25.86%
Processed products	763.2	731.3	3.4%	31.9	0.65%
Food preparations	2 266.7	2 004.2	8.5%	262.5	17.43%
Beverages	606.4	522.0	8.1%	84.4	0.86%
Non edible	953.6	920.5	10.0%	33.1	2.06%
Total agricultural products	7 611.7	6 915.2	5.4%	694.7	11.54%
as % of total exports	4.3%	4.6%		2.4%	
Imports					
Commodities	1 355.7	1 243.3	4.8%	112.4	7.6%
Other primary products	2 770.8	2 656.6	4.4%	113.8	8.7%
Processed products	1 479.8	1 421.9	8.1%	57.2	-5.3%
Food preparations	2 204.3	2 043.9	9.6%	160.1	15.9%
Beverages	445.2	410.7	6.4%	34.3	0.6%
Non edible	1 277.5	1 068.2	14.9%	207.9	-18.3%
Total agricultural products	9 533.4	8 844.6	7.5%	685.7	-1.52%
as % of total imports	6.0%	7.4%		1.8%	
Balance					
Commodities	343.9	304.4		38.7	
Other primary products	-1 448.6	-1 467.0		17.9	
Processed products	-716.6	-690.7		-25.3	
Food preparations	62.4	-39.8		102.4	
Beverages	161.2	111.3		50.1	
Non edible	-324.0	-147.7		-174.8	
Total agricultural products	-1 921.7	-1 929.4		9.0	

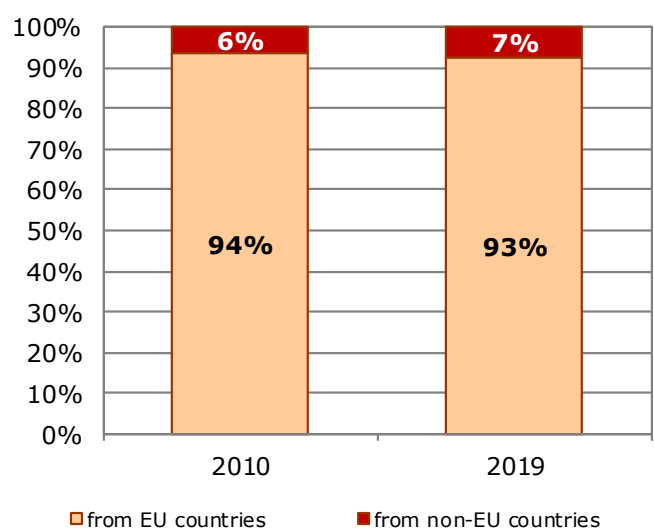
Source: Directorate General for Agriculture and Rural Development, based on COMEXT data

Updated: June 2020

Exports of agricultural products

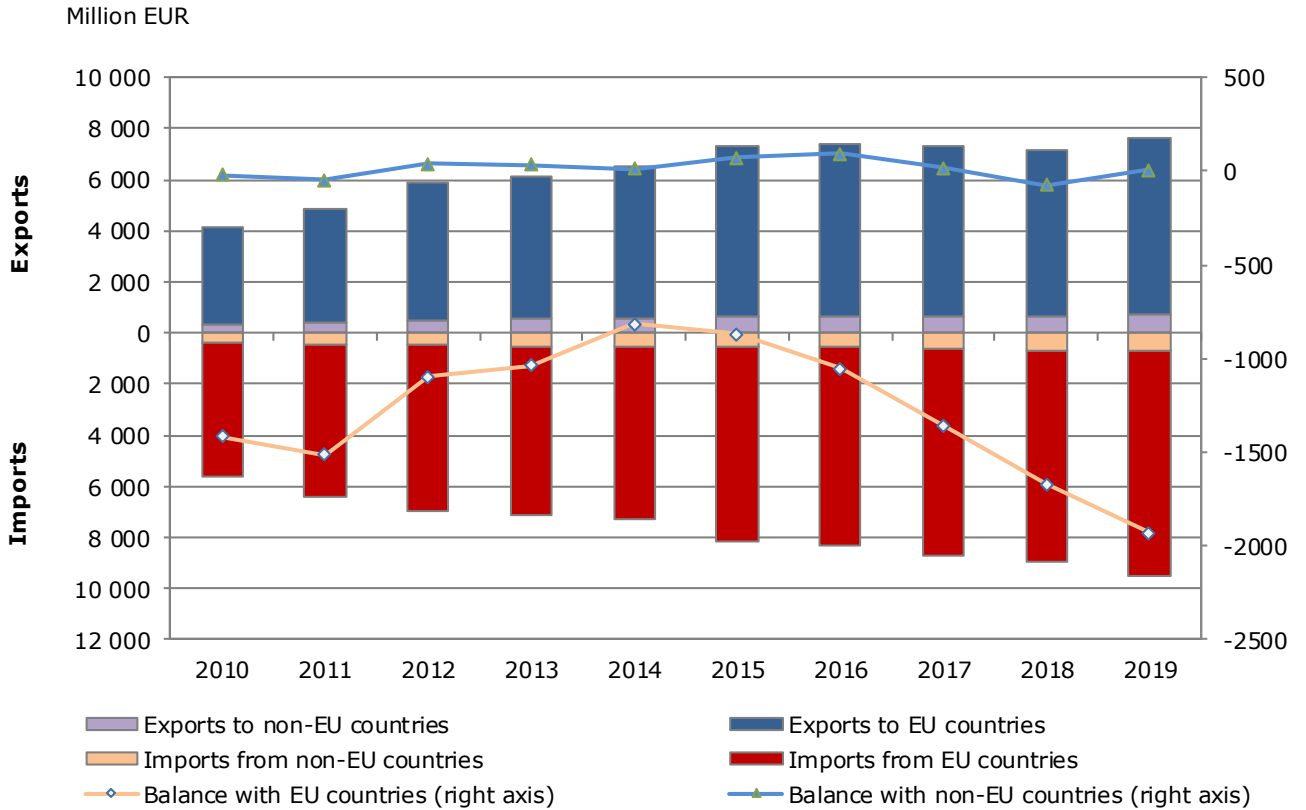


Imports of agricultural products

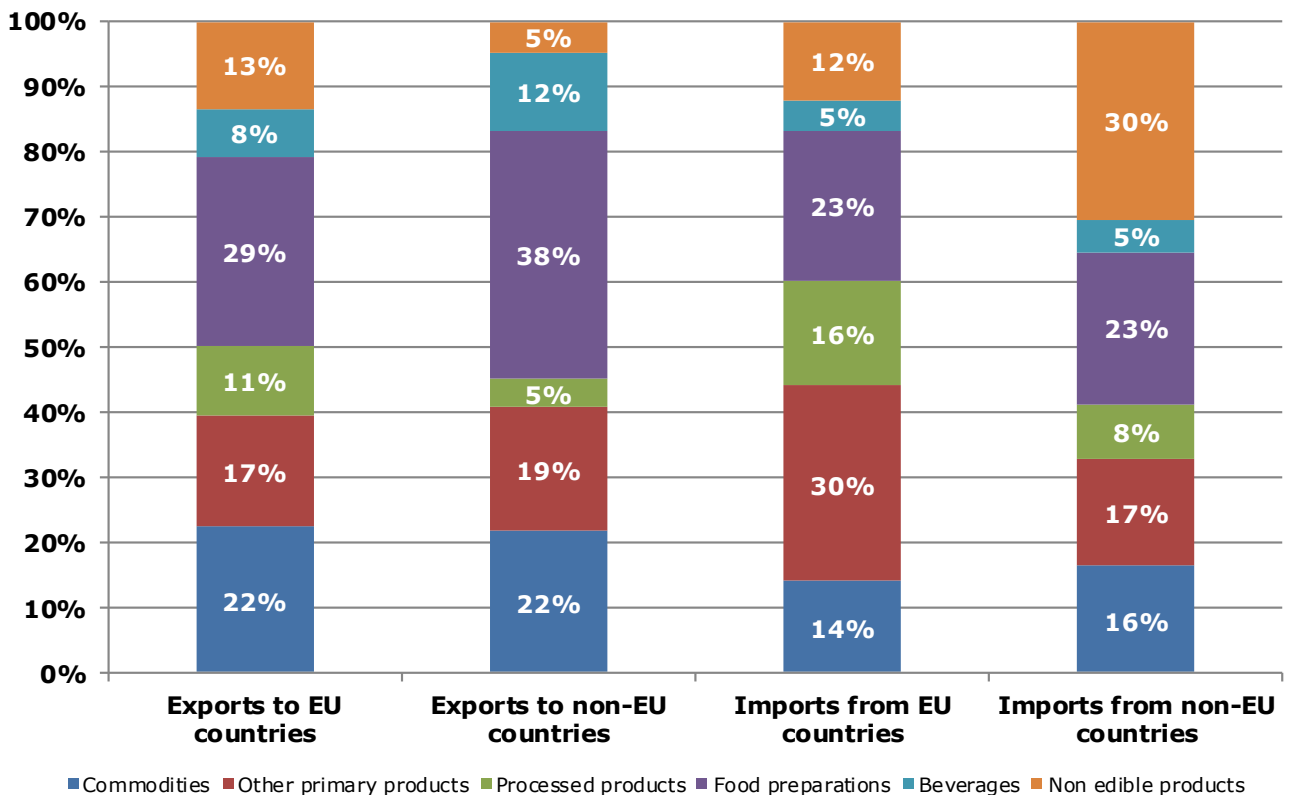


5.2. AGRICULTURAL TRADE

Evolution of agricultural trade with EU and non-EU countries



Structure of agricultural exports and imports



6.1. FARM STRUCTURE

Structure of agricultural holdings

Holdings		2010		2016	
		Total	%	Total	%
By UAA (*)	< 5 ha	3 530	15.4%	4 960	18.7%
	5-10 ha	4 180	18.3%	5 180	19.5%
	10-20 ha	3 950	17.3%	4 470	16.8%
	20-30 ha	2 060	9.0%	2 370	8.9%
	30-50 ha	2 310	10.1%	2 380	9.0%
	50-100 ha	2 420	10.6%	2 450	9.2%
	> 100 ha	4 420	19.3%	4 710	17.8%
By economic size (**)	< 4 000 €	3 940	17.2%	4 070	15.3%
	< 8 000 €	4 110	18.0%	4 350	16.4%
	< 15 000 €	3 500	15.3%	4 320	16.3%
	< 25 000 €	2 390	10.5%	3 050	11.5%
	< 50 000 €	2 800	12.2%	3 200	12.1%
	< 100 000 €	2 030	8.9%	2 400	9.0%
	< 250 000 €	1 670	7.3%	2 230	8.4%
	< 500 000 €	760	3.3%	980	3.7%
	=/> 500 000 €	1 670	7.3%	1 930	7.3%
By LSU (***)	0	7 070	30.9%	7 950	30.0%
	0-5	5 540	24.2%	7 310	27.6%
	5-10	2 780	12.2%	3 270	12.3%
	10-15	1 400	6.1%	1 510	5.7%
	15-20	890	3.9%	940	3.5%
	20-50	2 170	9.5%	2 340	8.8%
	50-100	930	4.1%	1 060	4.0%
	100-500	1 240	5.4%	1 390	5.2%
> 500	850	3.7%	780	2.9%	
By age of holder	< 35 years	2 670	11.7%	1 180	4.4%
	35-44 years	4 730	20.7%	3 890	14.7%
	45-54 years	6 140	26.9%	5 860	22.1%
	55-64 years	6 410	28.0%	8 490	32.0%
	> 64 years	2 920	12.8%	7 100	26.8%
	not applicable	:	:	:	:
Total	22 870	100%	26 520	100%	
UAA in 1 000 ha	3 484		3 455		
UAA (ha) per holding	152.4		130.2		

Source: Eurostat, Farm Structure Survey

Updated: June 2020

(*) UAA = Utilised agricultural area.

(**) Economic size: The standard output of an agricultural product (crop or livestock), abbreviated as SO, is the average monetary value of the agricultural output at farm-gate price, in euro per hectare or per head of livestock. There is a regional SO coefficient for each product, as an average value over a reference period (5 years, except for the SO 2004 coefficient calculated using the average of 3 years). The sum of all the SO per hectare of crop and per head of livestock in a farm is a measure of its overall [economic size](#), expressed in euro.

(***) LSU = Livestock units. A LSU is equivalent to a dairy cow. The number of animals (heads) is converted into LSU using a set of coefficients reflecting the feed requirements of the different animal categories.

6.2. FARM STRUCTURE

Structure of farm labour force

2016			
Family labour force		Non family labour force	
persons:	48 450	Data not available	
of which women:	31.2%		
AWUs (*):	27 520	AWUs:	71 440
Holders	Family members	Regular non family labour force	Non regular non family labour force
persons:	persons:	persons:	Data not available
23 390	25 060	81 840	
of which women:	of which women:	of which women:	
12.6%	48.7%	33.2%	
AWUs:	AWUs:	AWUs:	AWUs:
16 930	10 590	71 440	4 300
Total farm labour force (persons)		130 290	
Total farm labour force (AWUs)		103 260	

Source: Eurostat, Farm Structure Survey

Updated: June 2020

* AWUs = Annual work units. An AWU is equivalent to a worker employed on a full time basis for one year.

This document does not necessarily represent the official views of the European Commission
© European Union, 2020 - Reproduction authorised provided the source is acknowledged

Contact: DG Agriculture and Rural Development, Farm Economics Unit

Tel: +32-2-29 75471 / E-mail: Agri-C3@ec.europa.eu