



ASSOCIATION INTERNATIONALE DES INTERPRÈTES DE CONFÉRENCE  
INTERNATIONAL ASSOCIATION OF CONFERENCE INTERPRETERS

## AIIC and Distance Interpreting: Mapping the landscape

Kilian G. Seeber

Task Force on Distance Interpreting

### AllC position paper on Distance Interpreting

(...) Consequently, AllC, through its Task Force on Distance Interpreting, is committed to sparing no effort in developing and adopting **evidence-based working conditions** that provide for both **quality of interpretation** and **interpreter wellbeing**, through the systematic and methodical testing of Distance Interpreting modalities in real work environments.

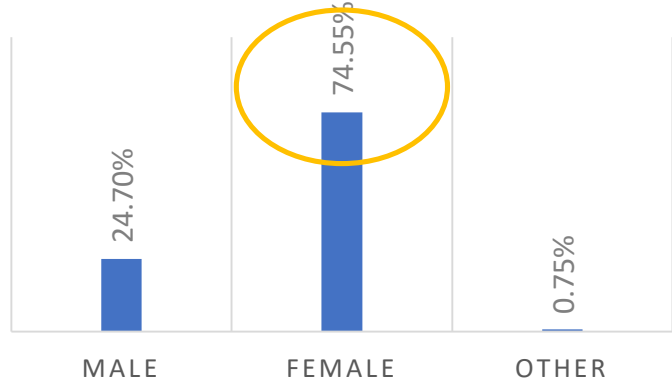
Population: 3042

Sample: 664

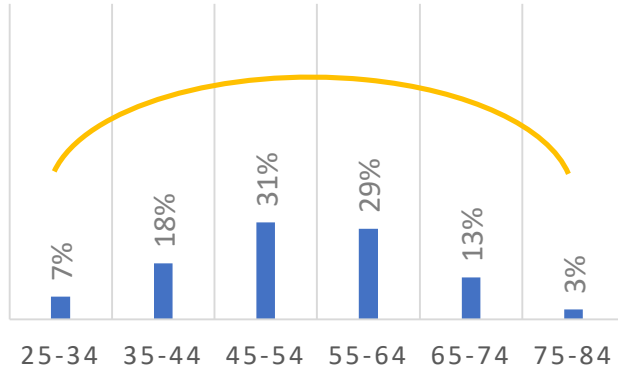
Margin of error: 3.36%

Confidence interval: 95%

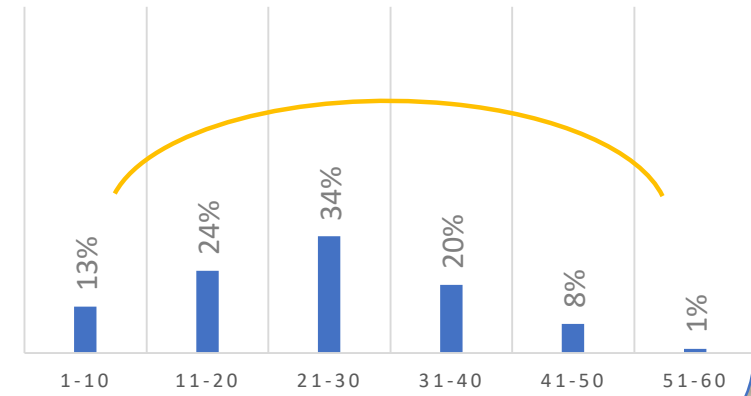
### GENDER



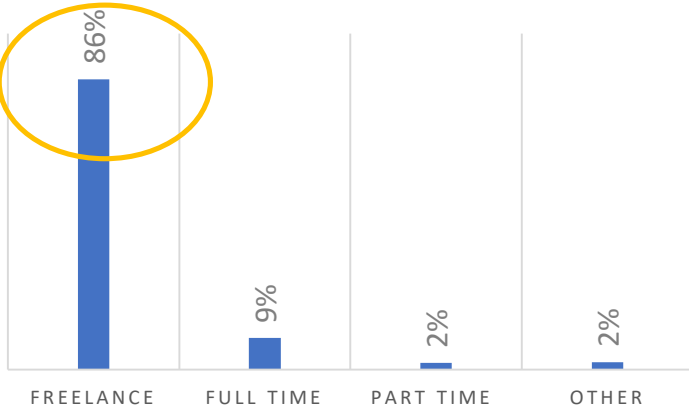
### AGE



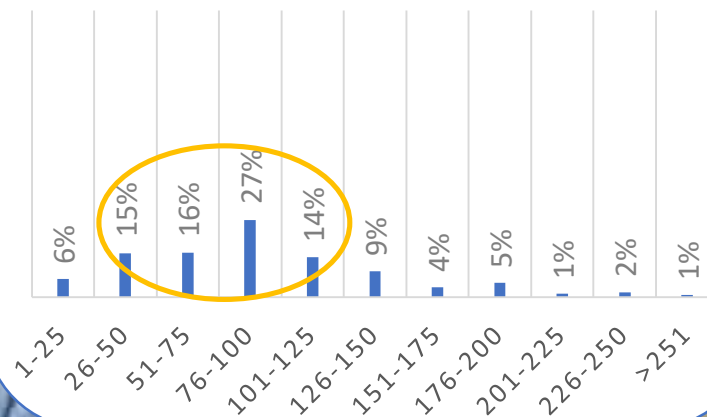
### EXPERIENCE



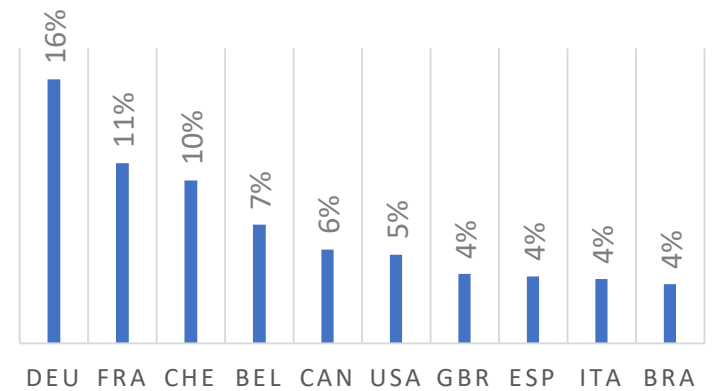
### PROFILE



### ACTIVITY



### LOCATION



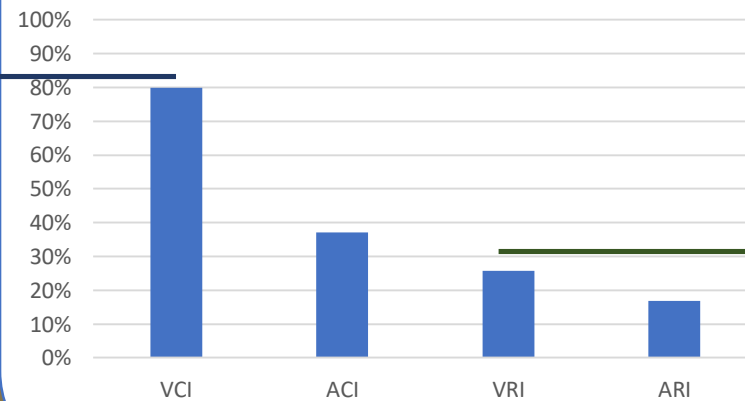
### VCI

The interpreter has a video-mediated view of the speaker/signer **and** a direct view of some or all the other participants

### VRI

The interpreter has a video-mediated view of the speaker/signer **but no** direct view of the other participants

DI experience



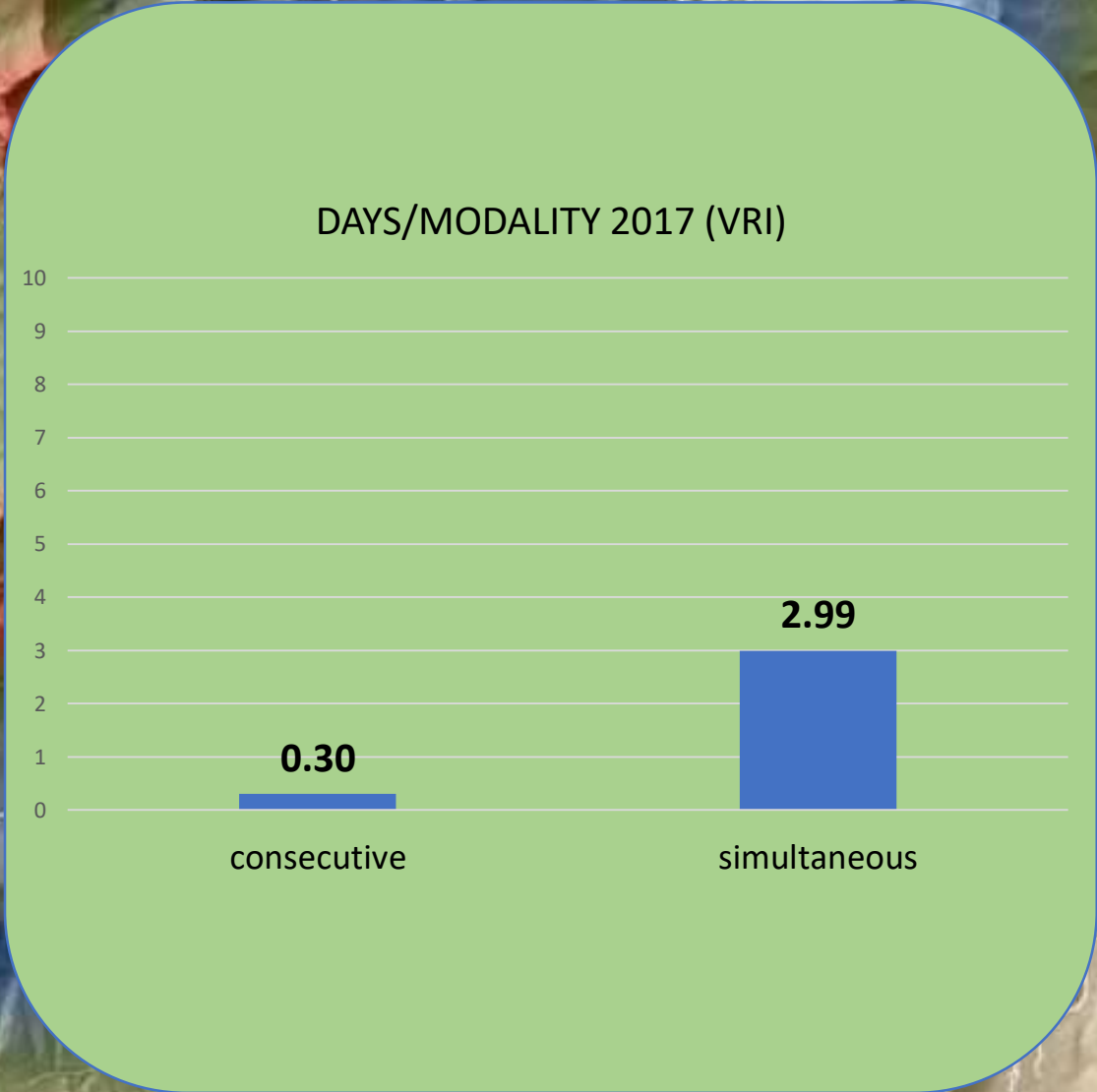
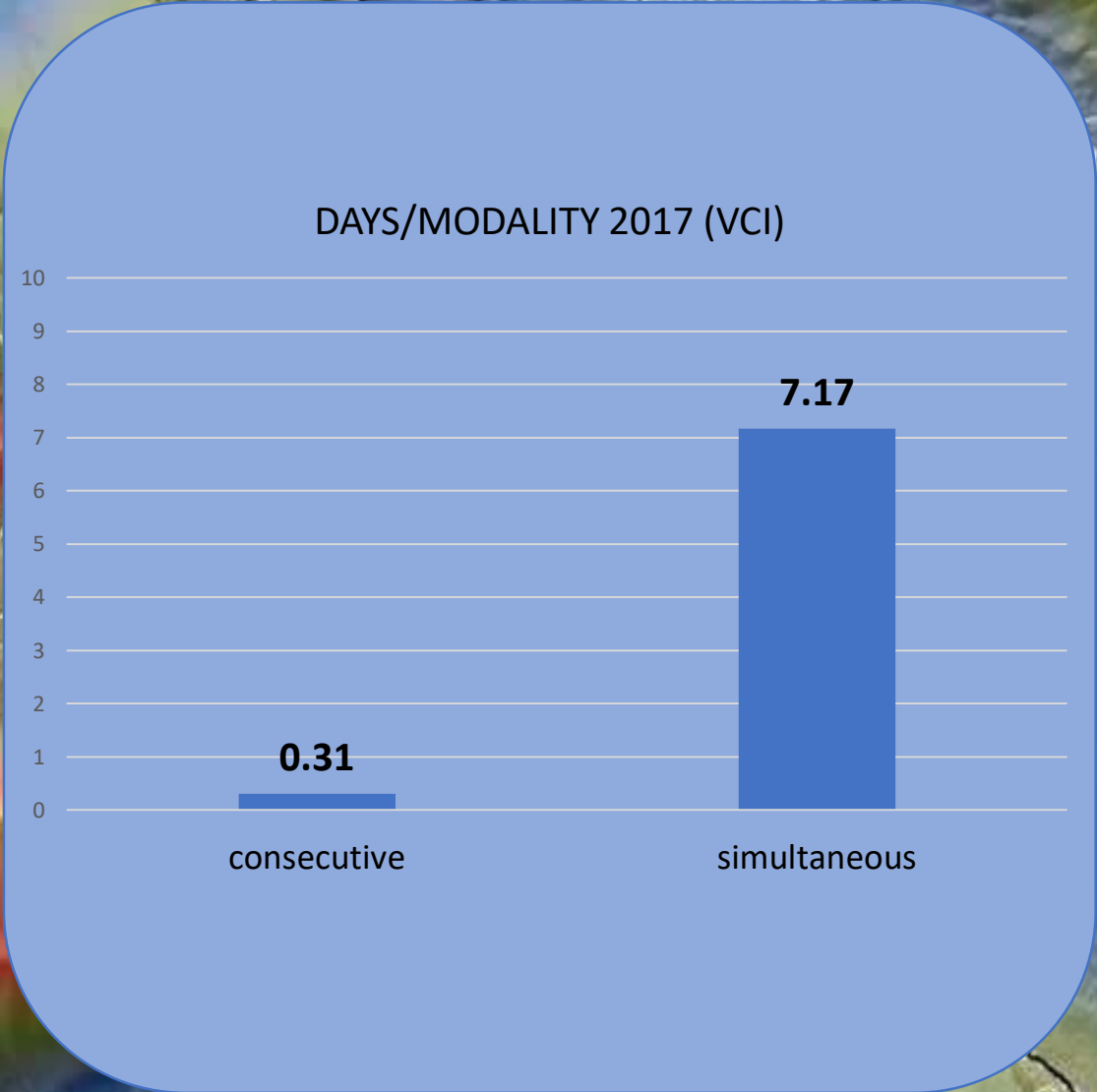
### ACI

The interpreter has **no** view of the speaker **but** a direct view of some or all the other participants

### ARI

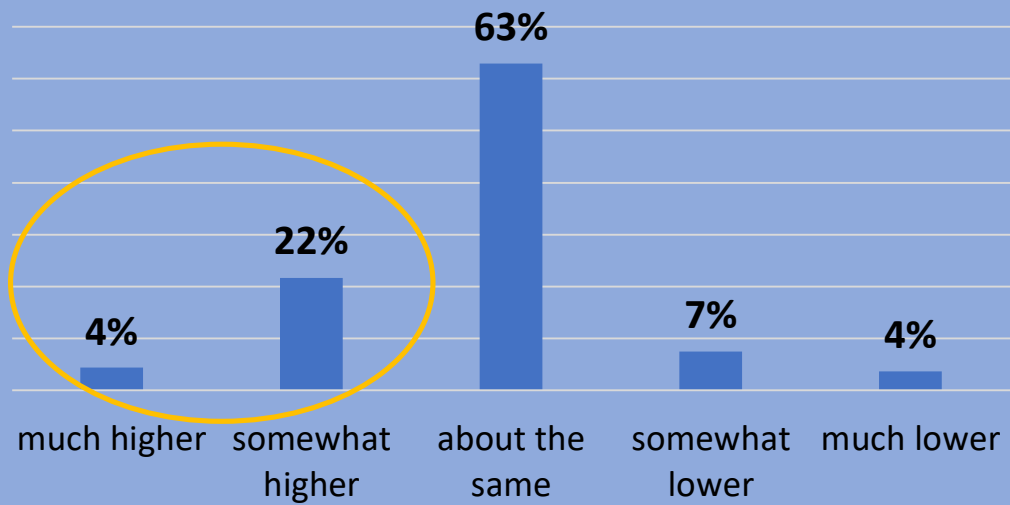
The interpreter has **no** view of the speaker **nor** of any other participants

# How often are the two DI modalities used?

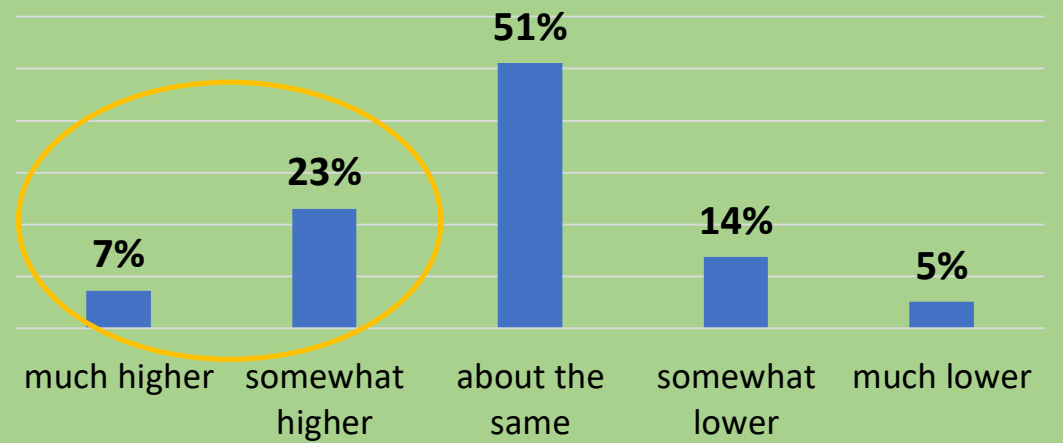


# Has this frequency changed?

## FREQUENCY IN 2017 (VCI)



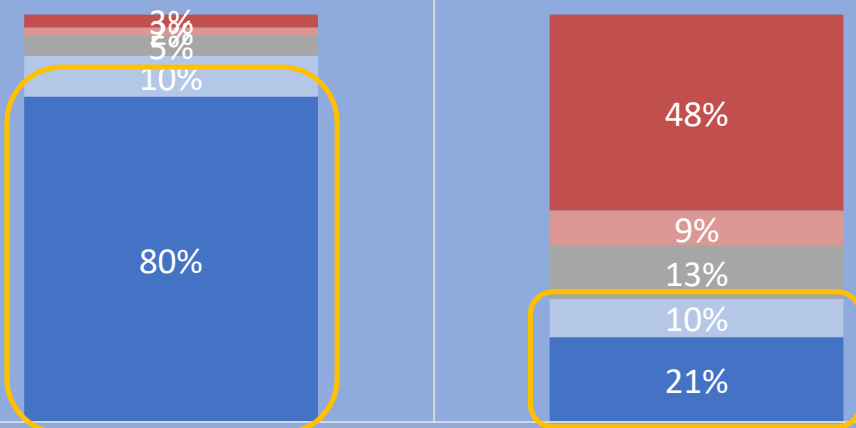
## FREQUENCY IN 2017 (VRI)



# What equipment do you use when working in this DI modality?

## EQUIPMENT (VCI)

always often sometimes rarely never

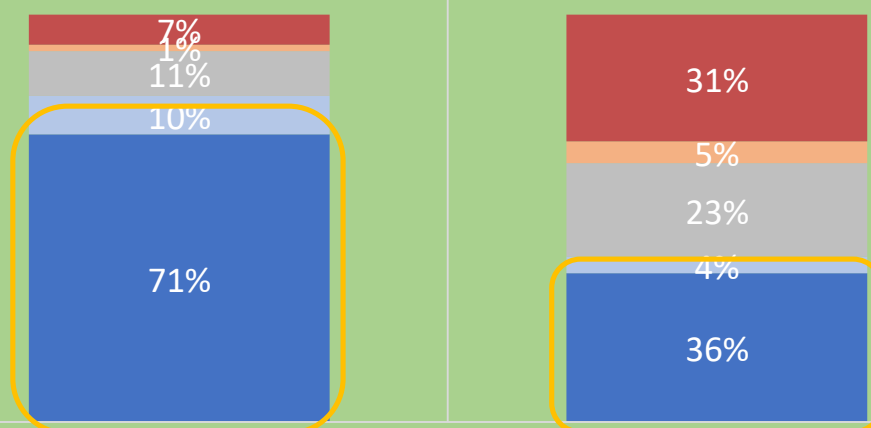


CONSOLE

COMPUTER

## EQUIPMENT (VRI)

always often sometimes rarely never



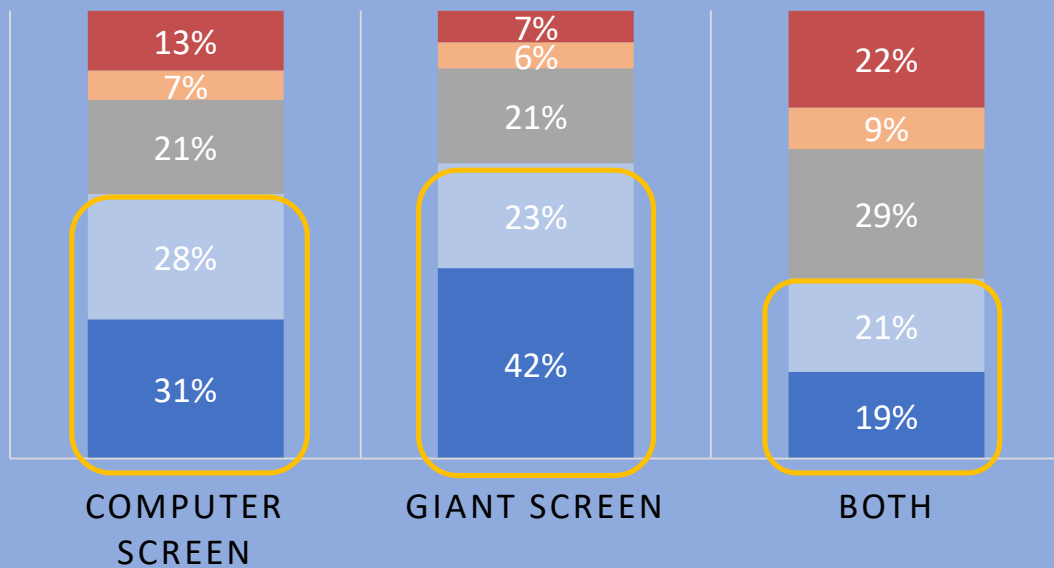
CONSOLE

COMPUTER

# What visual input do you have when working in this DI modality?

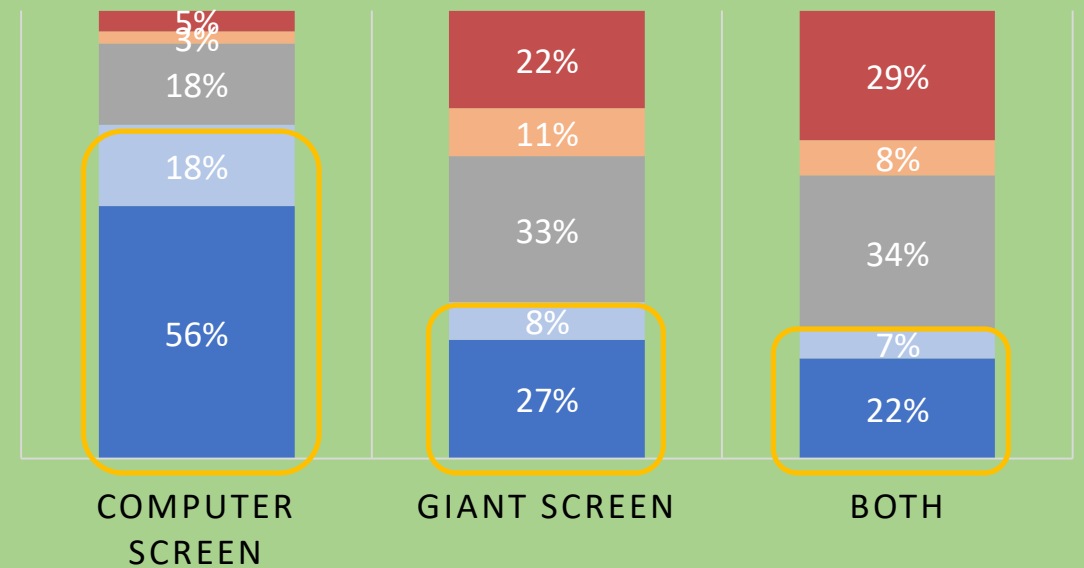
## VISUAL INPUT (VCI)

always often sometimes rarely never



## VISUAL INPUT (VRI)

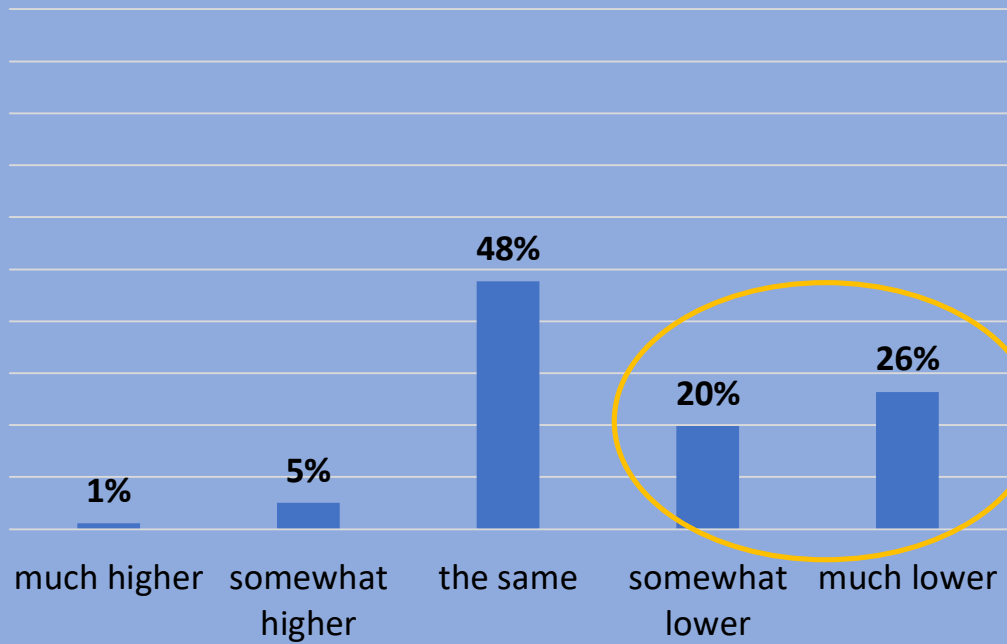
always often sometimes rarely never



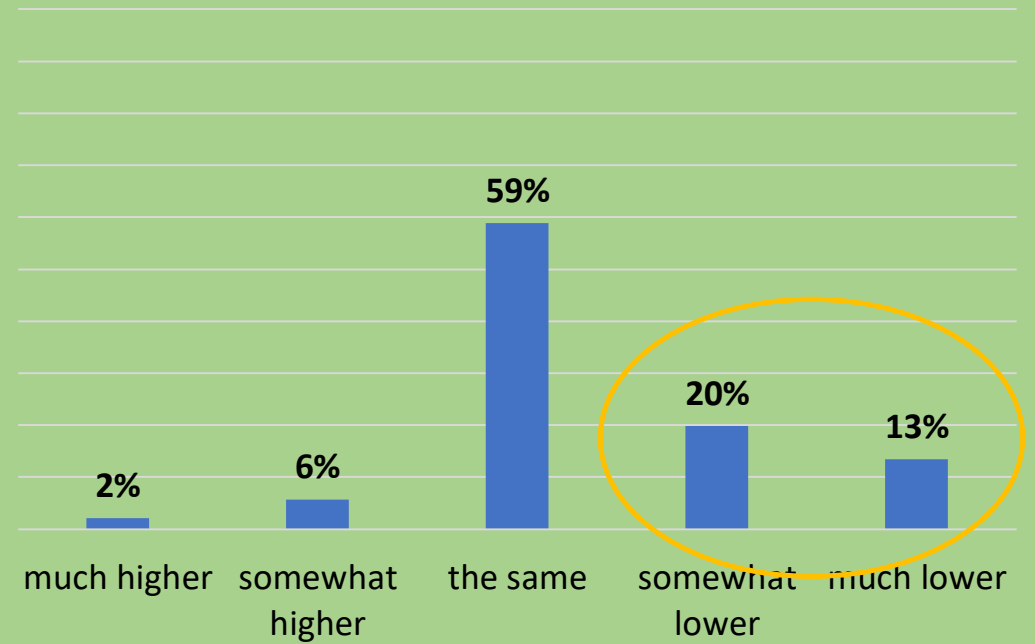


# How often do you get texts when working in this DI modality?

## AVAILABILITY OF TEXT (VCI)

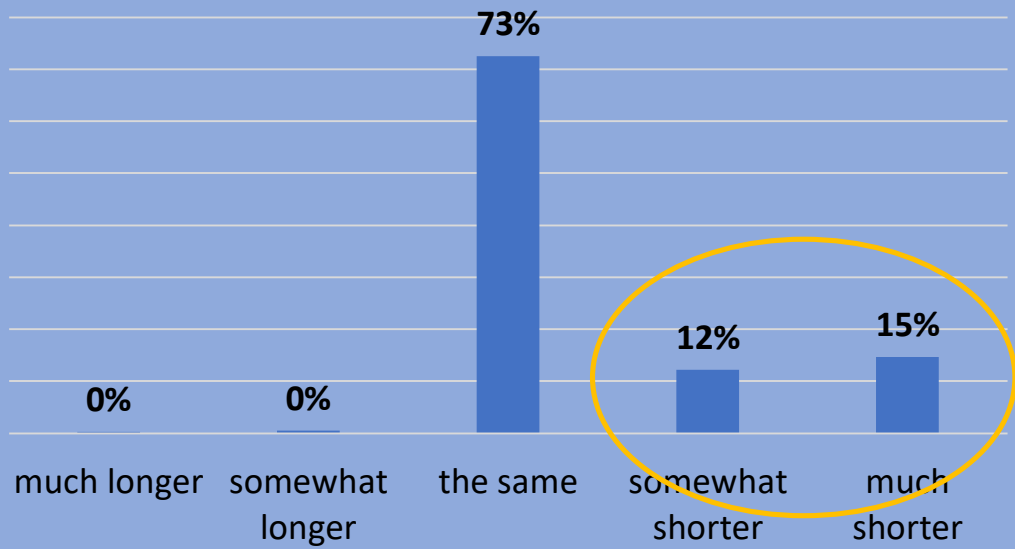


## AVAILABILITY OF TEXT (VRI)

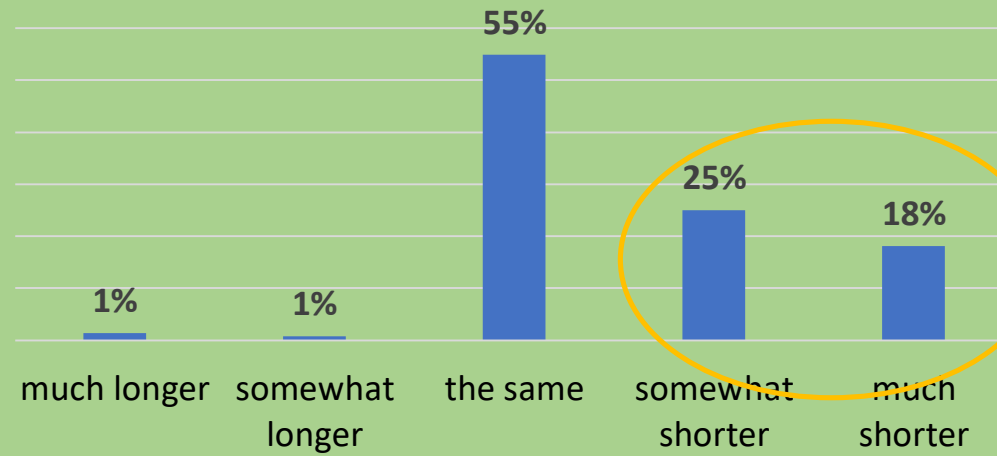


# What is the duration of your workday when working in this DI modality?

## WORKDAY DURATION (VCI)



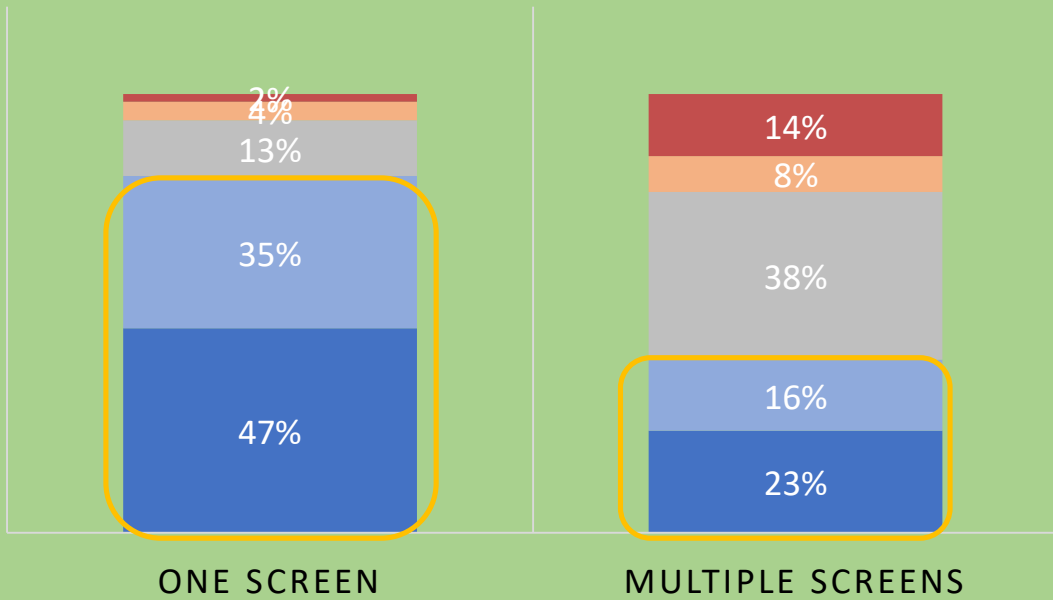
## WORKDAY DURATION (VRI)



# A closer look at VRI

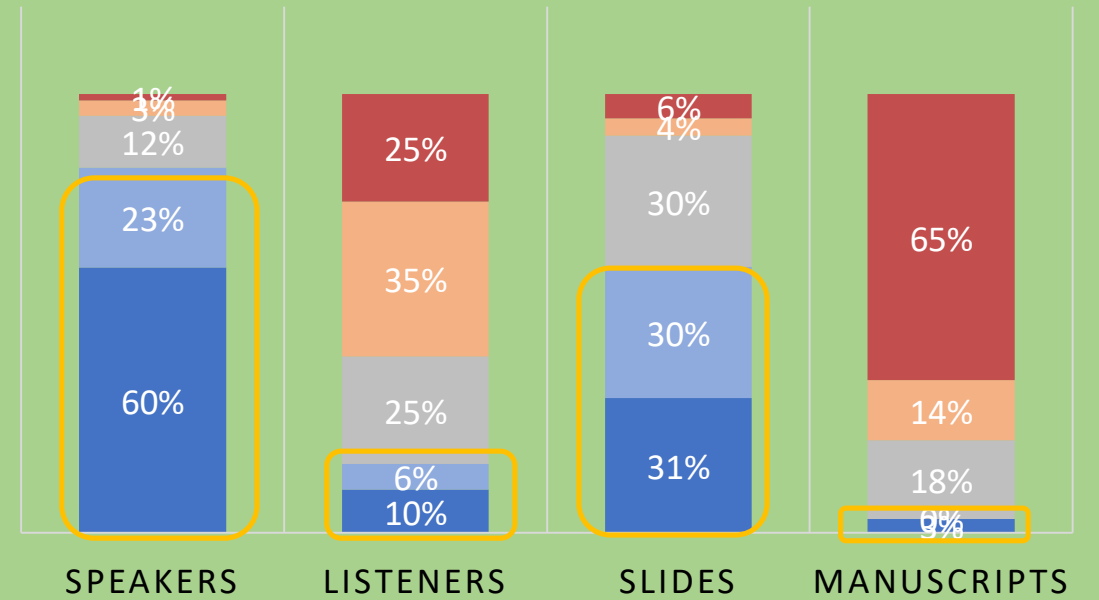
## VISUAL INPUT 2 (VRI)

always often sometimes rarely never



## VISUAL INPUT 3 (VRI)

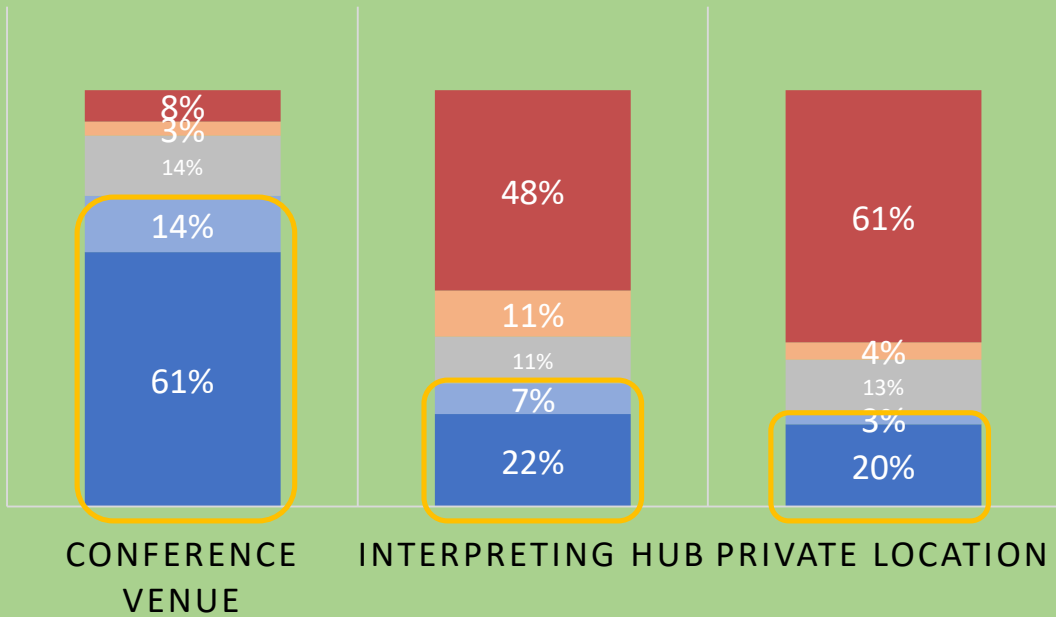
always often sometimes rarely never



# A closer look at VRI

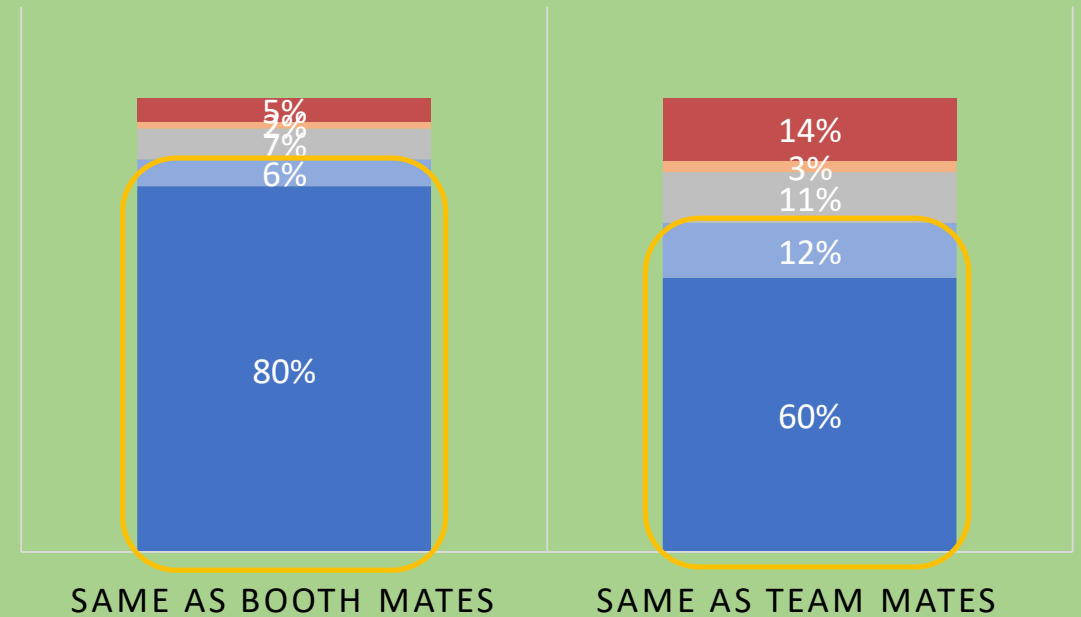
## WORKPLACE (VRI)

always often sometimes rarely never



## PHYSICAL LOCATION (VRI)

always often sometimes rarely never



What do these data tell us?

## **Video Conference Interpreting (VCI) – Video Remote Interpreting (VRI)**

Less than 10% of all meetings, tendency rising, mainly using traditional console

**VCI** visual input: giant or computer screens

**VRI** visual input: computer screens

### **VRI**

One-screen setup

Visual input: speaker (90%); slides (60%); audience (15%); texts (5%)

Venue: conference (75%); hub (25%); home (20%)

Location: with booth mate (85%); with team mate(s) (75%)



ASSOCIATION INTERNATIONALE DES INTERPRÈTES DE CONFÉRENCE  
INTERNATIONAL ASSOCIATION OF CONFERENCE INTERPRETERS

## AIIC and Distance Interpreting: Mapping the landscape

Kilian G. Seeber

Task Force on Distance Interpreting