

Common Agricultural Policy: Key graphs & figures

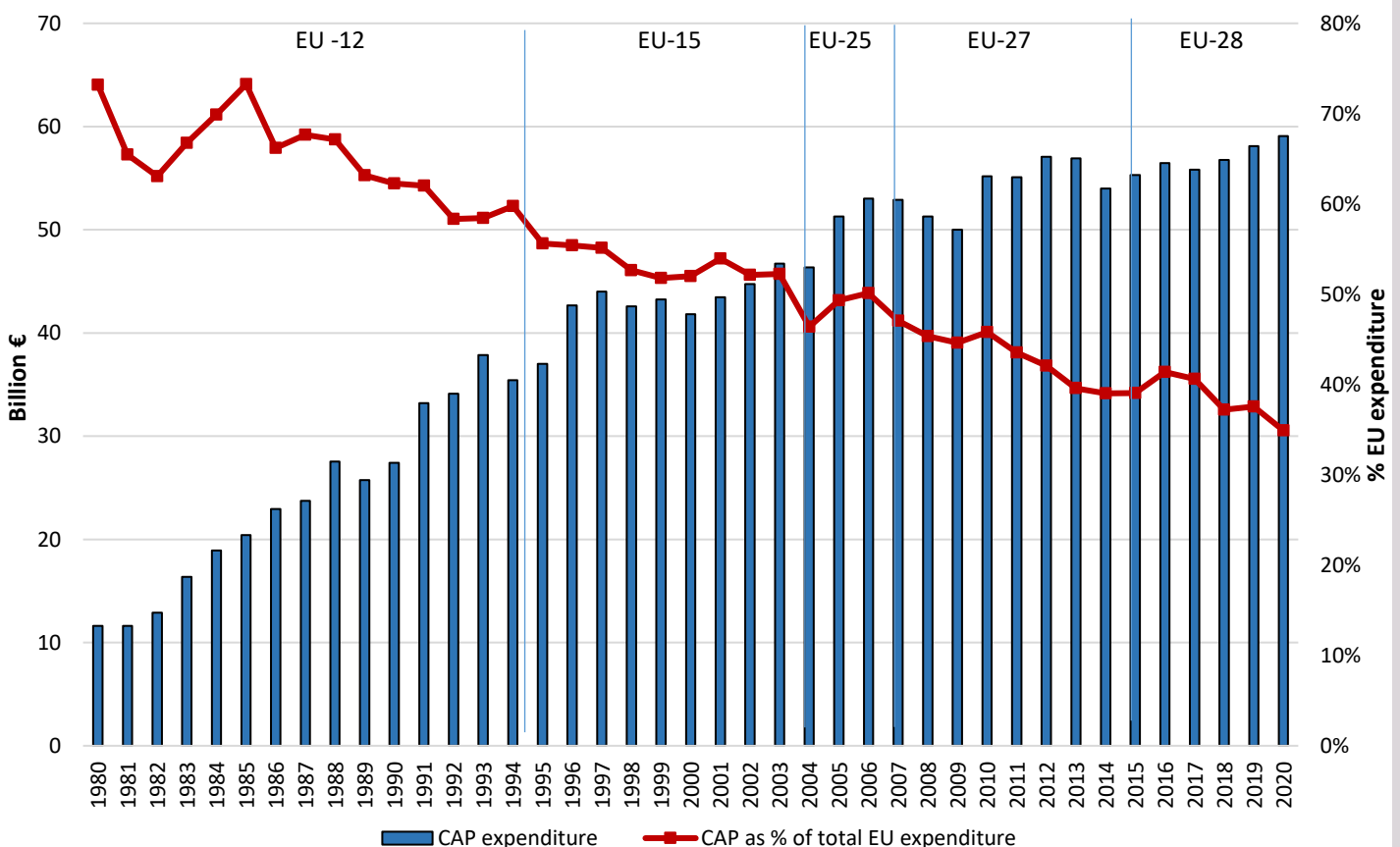
Graph 1

October 2021

CAP expenditure in the total EU expenditure

This graph shows the **development of expenditure of the Common Agricultural Policy (CAP) over the years as a share of the EU budget**. The share has decreased over the past 40 years, from 65.5% in 1980 to 35% in 2020. This decrease has taken place despite the successive EU enlargements. This downward trend in the CAP's share of EU spending is mainly due to CAP reforms and the growing share of other EU policies in EU expenditure.

CAP expenditure in total EU expenditure (current prices)



Sources: CAP expenditure: European Commission, DG Agriculture and Rural Development (Financial Report).
EU expenditure: European Commission, DG BUDG-2008 EU Budget Financial Report for 1980-1999, DG BUDG-2015 EU Budget Financial Report from 2000. Annual expenditure in current prices.