

TEN-T Multi-Annual Programme

Member States involved:

Belgium

Implementation schedule

Start date: January 2007

End date: December 2015

EU contribution: €13,294,347

Additional information:

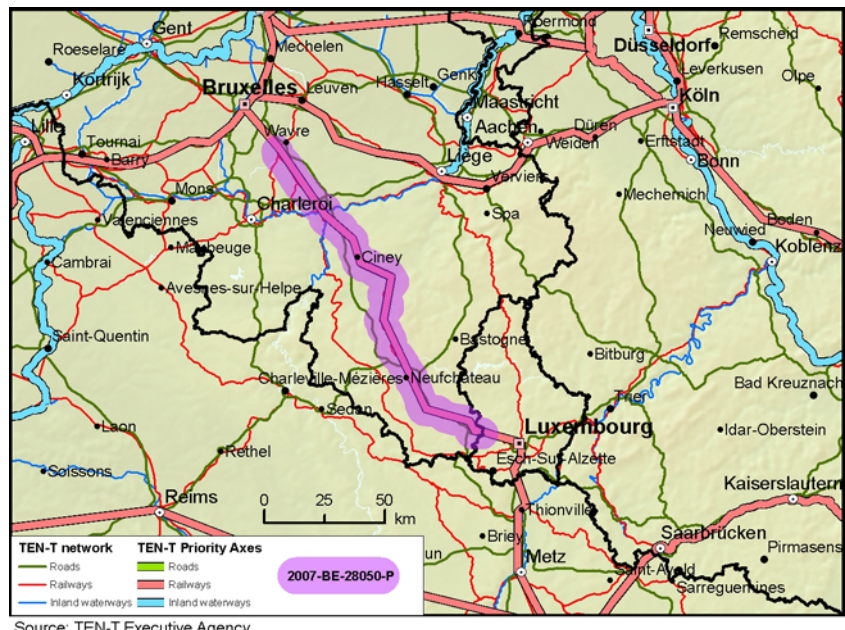
European Commission, DG MOVE
http://ec.europa.eu/transport/index_en.html

Innovation and Networks Executive Agency (INEA)
<https://ec.europa.eu/inea>

Beneficiary & Implementing body:
 Infrabel
www.infrabel.be

EuroCap-Rail on the Brussels-Luxembourg-Strasbourg railway axis

2007-BE-28050-P Part of Priority Project 28



This project, part of the Priority Project 28 (EuroCap-Rail: Brussels-Luxembourg-Strasbourg railway axis), aimed to modernise and improve the existing railway between Brussels and the Luxembourg border to allow a significant increase in train speed and therefore a large reduction in travel time.

This project concerned a 226 km section from Brussels to Luxembourg. Works were mainly focused on:

- reducing the most burdensome curves which currently posed one of the major obstacles to higher operating speeds,
- regularising the track spacing at 2.25 m to allow a design speed of 160 km/h,
- adapting structures which were affected by the new track spacing,
- modernising various railway stations.

This project improved comfort, safety and travel time for passengers travelling between the North Sea, France, Luxembourg, Switzerland, Germany or Italy through Belgium.

The Action is closed.