



River Information Services (RIS) Multi-Annual Call 2011

TEN-T Info Day
Brussels, 29 June 2011

Directorate-General
for Mobility
and Transport



Agenda

- Inland Waterway Transport Policy
- River Information Services
- Legal Basis for RIS
- RIS Implementation
- RIS further development
- MAP RIS Call 2011

Inland waterway transport policy

Integrated Action Programme “NAIADES”

1. MARKET

- » Create favourable conditions for services

2. FLEET

- » Stimulate fleet modernisation and innovation

3. JOBS AND SKILLS

- » Promote jobs and skills

4. IMAGE AND PROMOTION

- » Improve image and co-operation

5. INFRASTRUCTURE

- » Provide adequate infrastructure
 - **River Information Services**

River Information Services

What is RIS?

- Harmonised information services to support traffic and transport management in inland navigation and enhancing safety, security, environmental friendliness and the quality and efficiency of transport services

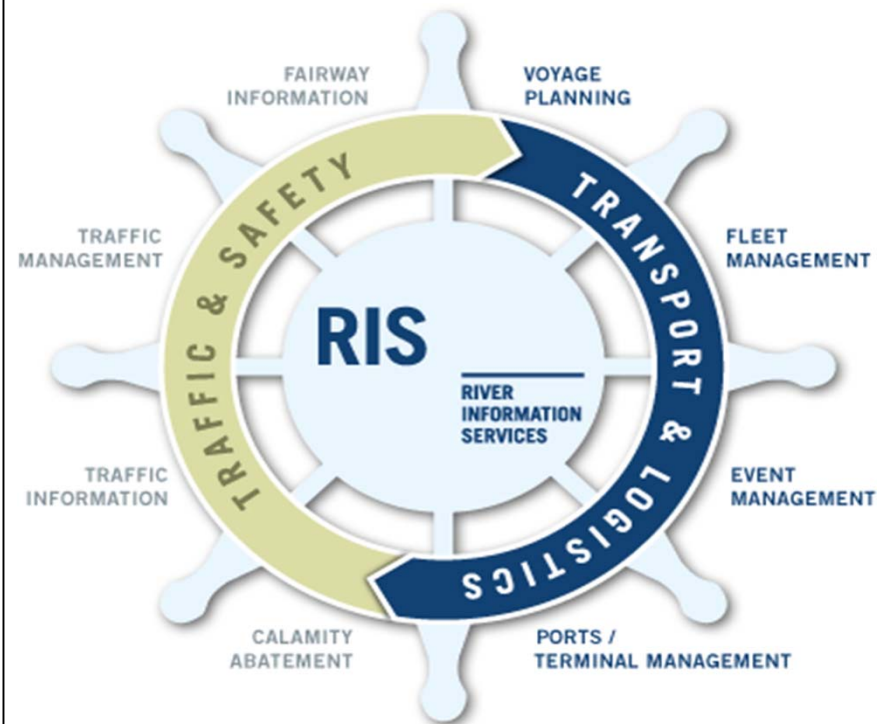
River Information Services

Traffic-related services:

- Fairway Information Services
- Traffic information
- Traffic management
- Calamity abatement

Transport-related services:

- Voyage planning
- Fleet Management
- Event Management
- Ports and Terminal Management



River Information Services

User groups and services

Services for skippers

- Electronic Navigational Charts / Inland ECDIS
- Information on nautical conditions (fairway, obstructions, water level, etc.)
- Real time traffic information
- Electronic reporting of cargo and voyage
- Electronic pre-announcement at locks and harbours

Services for authorities

- Real time traffic monitoring (tracking and tracing)
- Analysis of accidents
- Exchange of safety related messages
- Electronic vessel register
- Electronic lock management
- Reception of electronic cargo reports
- Border surveillance

Services for logistic users

- Electronic cargo documents
- Data for fleet management
- Data for voyage planning
- Fairway conditions
- Water level forecast
- Availability of locks
- Calculations of arrival times

River Information Services

Enabling RIS technologies

- Inland Electronic Navigational Chart (IENC) / Inland Electronic Chart Display and Information System (Inland ECDIS)
- Inland Automatic Identification System (Inland AIS)
- Electronic Ship Reporting
- Notices to Skippers (NtS)

Examples of River Information Services

- Fairway Information



Inland ECDIS/ IENC

Notice to skippers

A new Notice to Skippers of Štátna plavebná správa is available for the Dunaj River, the Dunaj River, the Dunaj River in Slovakia in the original language Slovakian, which has been compiled by Štátna plavebná správa.

The fairway and traffic related message no 72/01 in the year 2005.

Concerning Blockage caused by Work is valid between 30 September 2005 and 4 October 2005 for All in All directions.

from 30 September 2005 until 4 October 2005 between 07:00 o'clock and 11:00 o'clock following limitation is valid for the River Dunaj, Strom-km 1862.0 bis 1862.0. Partial obstruction along the Left of the fairway.

from 30 September 2005 until 4 October 2005 between 13:00 o'clock and 18:00 o'clock following limitation is valid for the River Dunaj, Strom-km 1862.0 bis 1862.0. Partial obstruction along the Left bank of the fairway.

from 30 September 2005 until 4 October 2005 between 07:00 o'clock and 11:00 o'clock following limitation is valid for the River Dunaj, Strom-km 1865.0 bis 1865.0. Blockage along the All of the fairway.

from 30 September 2005 until 4 October 2005 between 13:00 o'clock and 18:00 o'clock following limitation is valid for the River Dunaj, Strom-km 1865.0 bis 1865.0. Blockage along the All of the fairway.

Additional text in national language: V uvedených časových intervaloch bude zastavená plavba na danom úseku Dunaja z obvodu odstraňovania plavebnej prekážky - nánosu v strede plavebnej dráhy. Práca bude vykonávaná plávajúci stroj BD Povražie, ktorý bude označený optickou signalizáciou.

Notices to Skippers

RIS Message

A new RIS message of BMVT is available for the in Austria in 12.09.2005 at 13:41:

The fairway and traffic related m

published by the Schifffahrtsaufsicht Hainburg concerning Dre...
 There exists a/an Additional duty to report via VHF 16, Bagger DREI GEBRUEDER.
 On Workdays from 19.09.2005 until 21.10.2005 between 05:00 o'clock and 20:00 o'clock following limitation is valid for the Fairway Donau Strom-km 1879.1 to 1892.1: No passing. On Workdays from 19.09.2005 until 21.10.2005 between 05:00 o'clock and 20:00 o'clock following limitation is valid for the Fairway Donau Strom-km 1879.1 to 1892.1: No overtaking.

Additional text in national language:
 Taifahrer haben bei Strom-km 1881 über UKW Schiffsfunk, Kanal 16, mit dem Baggerschiff "Drei Gebraueder" Kontakt aufzunehmen. Dies gilt Montag bis Freitag in der Zeit zwischen 05:00 und 20:00 Uhr.

Examples of River Information Services

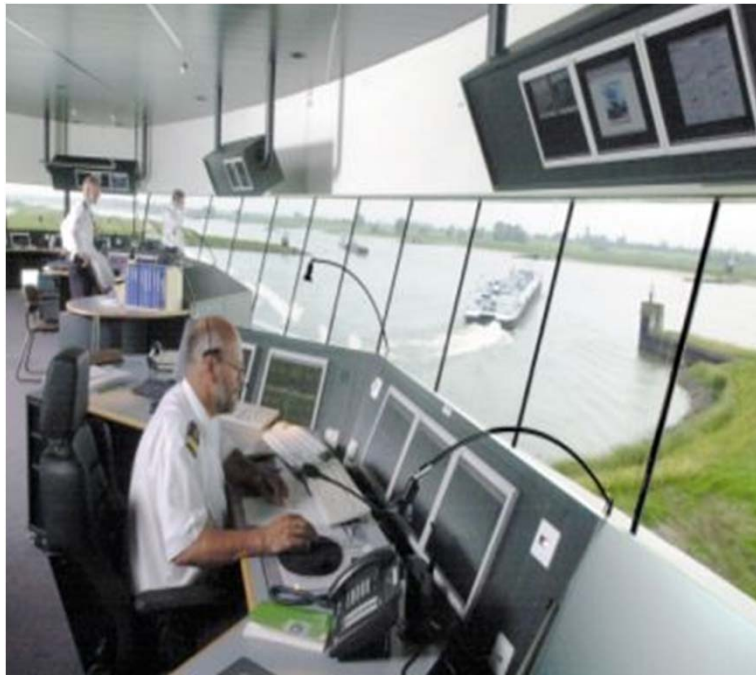
- Traffic Information



Inland AIS and Inland ECDIS

Examples of River Information Services

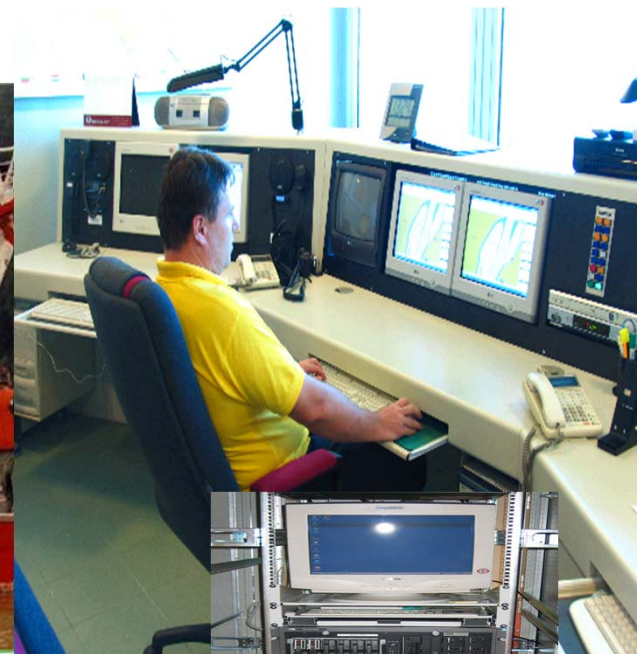
- Traffic Management



Inland AIS, Inland ECDIS

Examples of River Information Services

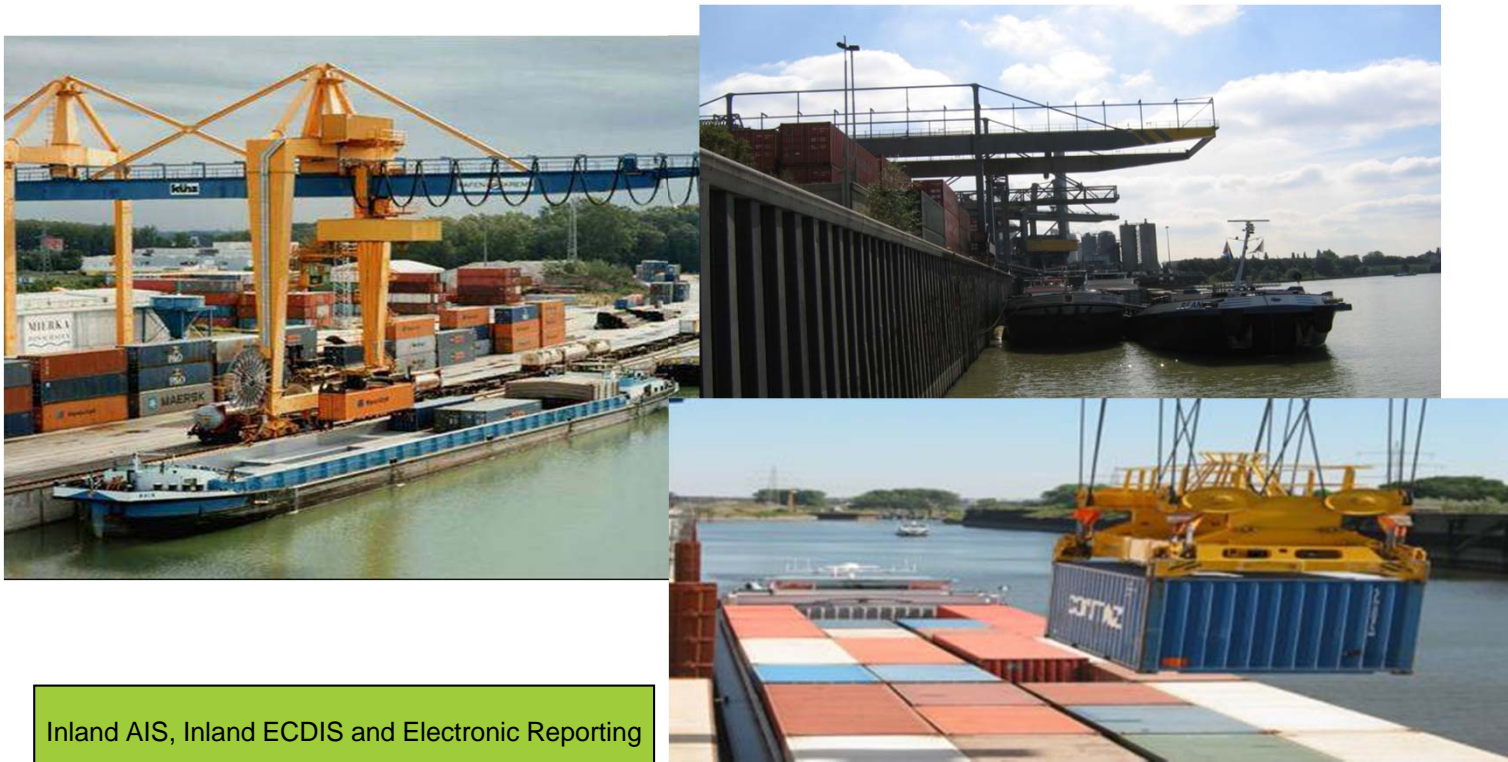
- Calamity Abatement Support



Inland AIS, Inland ECDIS and Electronic Reporting

Examples of River Information Services

- Information for Transport Logistics



Legal Background

- RIS are regulated through Directive 2005/44/EC which defines binding rules for data communication and RIS equipment as well as minimum requirements for RIS and which
- provides for a European-wide framework for the implementation of the RIS concept
- enables RIS applications to be interoperable and compatible on a national as well as European level in order to allow continuous cross border traffic without technical obstacles

Legal Background

EU RIS Directive (2005/44/EC)

Commission Regulation 414/2007
concerning the technical guidelines for the planning, implementation and operational use of RIS (RIS Guidelines)

Commission Regulation 415/2007
concerning the technical specifications for vessel tracking & tracing system (Inland AIS)

Commission Regulation 416/2007
concerning the technical specifications for Notices to Skippers (NtS)

Commission Regulation 164/2010
defining the technical specifications for electronic ship reporting (ERI)

Draft Commission Regulation
defining the technical specifications for Inland ECDIS

IRIS Europe Documentation
Technical and Administrative Agreement for the international data exchange
TAA & R2D2

Expert Group Tracking & Tracing

Expert Group Notices to Skippers

Expert Group Electronic Reporting International

Expert Group Inland ECDIS

“what”

- **Applicability**
- **Responsibilities of Member States**
- **Minimum requirements for RIS**
- **Services to be provided**
- **Technical specifications to be applied**

“how”

RIS Implementation – Examples (status end 2010)

- Provision of fairway & traffic, water-related and ice messages (Notices to skippers)
 - » 7 fully operational, 2 pilot, 4 in preparation
- Shore-based infrastructure for vessel tracking and tracing of Class Va and higher (10.500 km) and onboard equipment (Inland AIS)
 - » 1.600 km fully operational, 600 km pilot
 - » app. 5.500 transponders

RIS Implementation – Examples (status end 2010)

- Reporting of ERINOT message (Electronic Reporting)
 - » 2 fully operational, 3 pilot, 6 in preparation
- Electronic Navigational Charts of Class Va and higher (ENC, Inland ECDIS)
 - » 7.500 km fully operational, 400 km pilot
 - » app. 6.000 Inland ECDIS viewers

RIS Implementation - TEN-T

- Financial Framework 2007 – 2013
- RIS as part of the multi-annual programme (MAP) of TEN-T
 - » co-funding up to 20% for works, 50% for pilot studies
- Two calls so far – 2008, 2010
- 1st call for proposals 2008
 - » Budget allocated to 1st call = 16m€
 - » 6 projects funded as a result of the 1st call
- 2nd call for proposals 2010
 - » Budget allocated to 2nd call = 7m€
 - » 5 projects retained as a result of the 2nd call

RIS Implementation - TEN-T

- Projects from the previous TEN-T RIS Calls
 - » Implementation of RIS on the Westerscheldt river (BE/NL)
 - » Deployment of Inland AIS transponders (NL/DE; NL/FL)
 - » Study and implementation of AIS monitoring network (NL)
 - » Implementation of Fairway Information Services (NL)

RIS Implementation - TEN-T

- Projects from the previous TEN-T RIS Calls
 - » Implementation of RIS in Flanders (BE)
 - » Implementation of RIS in France - Services d'informations fluviales (FR)
 - » RIS along the Northern Italy Waterway System (IT)
 - » Implementation of RIS in Poland (PL)
 - » Co-ordinated implementation of RIS – IRIS Europe II (Partners: AT, BE, BG, CZ, FR, HU, NL, RO, SK; Co-operation partners: DE, HR, RS, UA)

RIS further development

Several European projects are addressing the further enhancement of RIS

- International data exchange
- Harmonised standards for Quality of Services
- Harmonised data basis for all RIS applications
- Use of RIS for logistics purposes and in logistic chain management
- European Hull Database
- Danube Fairway Information Services Portal

MAP RIS Call 2011

- General objectives and priorities
 - » To foster the deployment of RIS enabling intelligent infrastructure and the provision of RIS both in a harmonised and inter-operable way

MAP RIS Call 2011

- Specific objectives and priorities – technical and organisational
 - » Installation of on-board equipment and of shore-based infrastructure
 - » Testing and validation of the technical feasibility and interoperability of technologies, systems, services and applications
 - » Fine-tuning and further enhancement of technologies, systems, services and applications

MAP RIS Call 2011

- Specific objectives and priorities – technical and organisational cont.
 - » Implementation of (new) services, e.g. for transport management purposes
 - » Facilitation of interfaces with other modes of transport
 - » Further development and application of concepts such as for cross border data exchange
 - » Provision of feedback and contribution to the maintenance and amendment of the technical specifications

Additional Information

- TEN-T projects:

tentea.ec.europa.eu/en/ten-t_projects/ten-t_projects_by_transport_mode/ris_river_information_services.htm

- RIS Portal

www.ris.eu



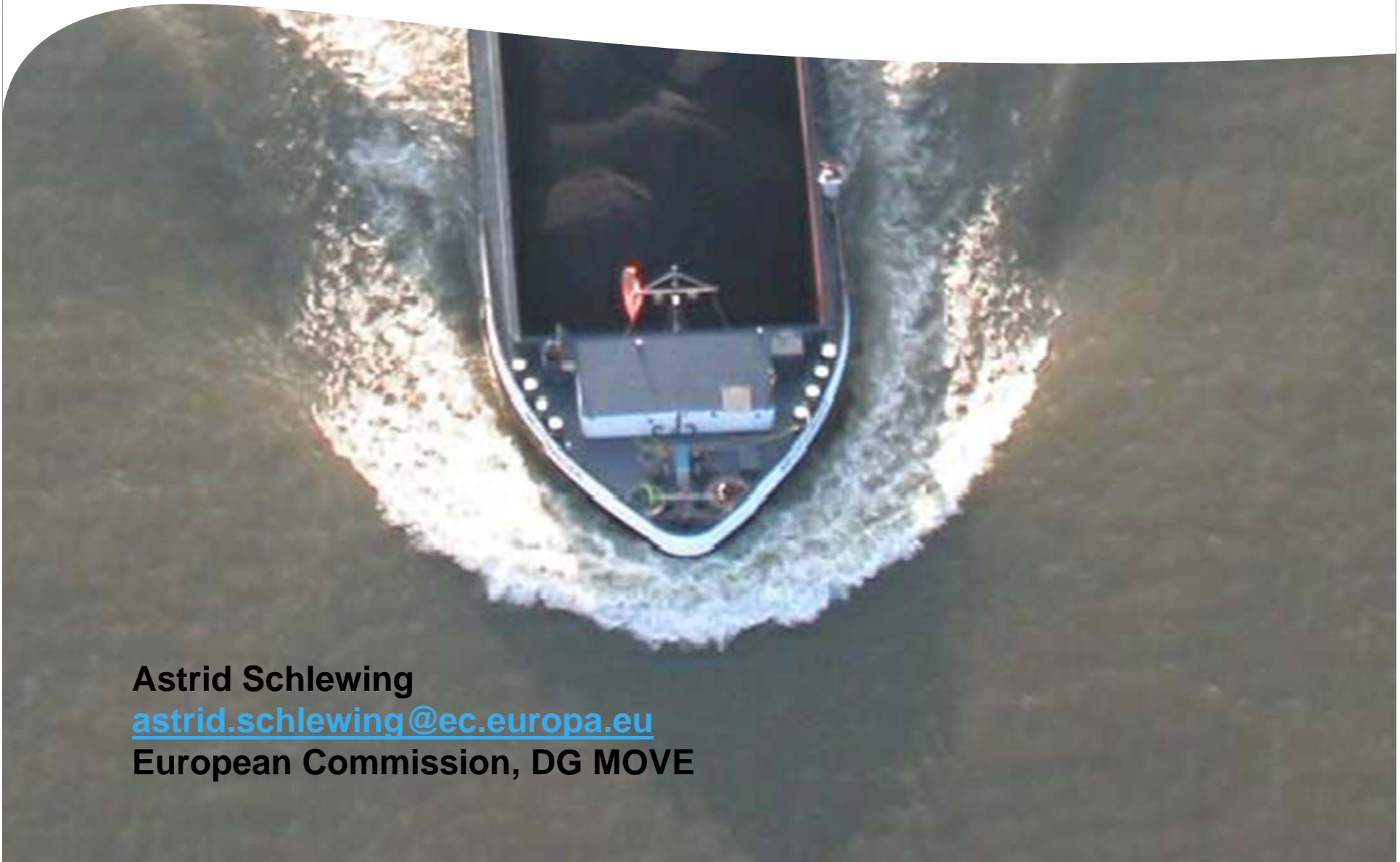
- RIS brochure:

http://www.transport-research.info/Upload/Documents/201104/20110405_145853_15995_Brochure_RIS_web.pdf

- DG MOVE:

ec.europa.eu/transport/inland/index_en.htm

Thank you for your attention



Astrid Schewing
astrid.schewing@ec.europa.eu
European Commission, DG MOVE