

2005-EU-603a-S

New Lyon-Turin Rail Link - International Section

- [Part of Priority Project 6](#)

Programme:

- **TEN-T Projects**

The new freight and passenger rail link between Lyon and Turin (Priority Project 6) will act as a key node between northern and southern Europe (London/Amsterdam/Paris-Milano) and west and east (Lisbon-Budapest). It will considerably shorten travel times for high speed passenger traffic and provide an environmentally friendly response to the steadily increasing demand for freight transport over the Alps.


This project concerns the common French-Italian part of the 80 km international section from Saint Jean de Maurienne to Sant'Antonino-Vaie in the Chiuse valley.

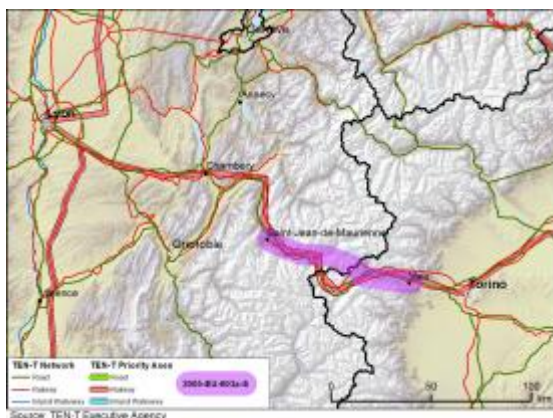
It covers technical and environmental studies related to Final Design in France and Preliminary Design in Italy, and the geological investigations related to the La Praz descending shaft and its gallery.

This project has been completed.

Budget: National budget: €48,000,000	Total project cost covered by this Decision: €96,000,000	Percentage of EU support: Studies: 50%
	EU contribution: €48,000,000	

Download the Info Sheet about this project:

 [.pdf](#) (388.6 KB)



Click map to view enlarged version

Member States involved:

Italy, France

Implementation schedule:

Start date: January 2005

End date: December 2009

Beneficiaries:

+ [Republic of France](#)

+ [Republic of Italy](#)

Implementing body:

➤ [Lyon Turin Ferroviaire SAS](#)

Additional information:

➤ [European Commission, DG MOVE](#)