

2007-BE-28050-P

Euro Cap Rail on the Brussels-Luxembourg-Strasbourg railway axis

- [Part of Priority Project 28](#)

Programme:

- **TEN-T Projects**

This project, part of the [Priority Project 28](#) (EuroCap-Rail: Brussels-Luxembourg-Strasbourg railway axis), aimed to modernise and improve the existing railway between Brussels and the Luxembourg border to allow a significant increase in train speed and therefore a large reduction in travel time.

This project concerned a 226 km section from Brussels to Luxembourg. Works were mainly focused on:

- reducing the most burdensome curves which currently posed one of the major obstacles to higher operating speeds,
- regularising the track spacing at 2.25 m to allow a design speed of 160 km/h,
- adapting structures which were affected by the new track spacing,
- modernising various railway stations.

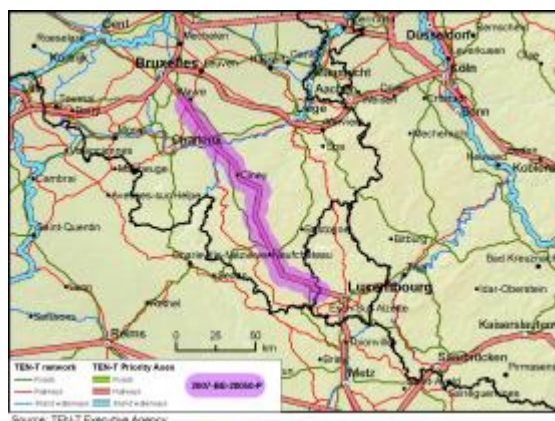
This project improved comfort, safety and travel time for passengers travelling between the North Sea, France, Luxembourg, Switzerland, Germany or Italy through Belgium.

The Action is closed

EU contribution: €13,294,347

Download the [Info Sheet](#) about this project

This project was also looked at during the [Mid-Term Review](#) of the 2007-2013 TEN-T Multi-Annual Work Programme.



Click map to view enlarged version

Member States involved:

Belgium

Implementation schedule:

Start date: January 2007

End date: December 2015

Beneficiary & Implementing body:

✚ [Infrabel](#)

Additional information:

✚ [European Commission, DG MOVE](#)

✚ [Innovation and Networks Executive Agency \(INEA\)](#)