

Branches of Social Insurance

Germany

Health Insurance

Accident Insurance

Pension Insurance

Unemployment Insurance

Long-Term Care Insurance

Social Insurance System

BKK: Company Health Insurance Funds

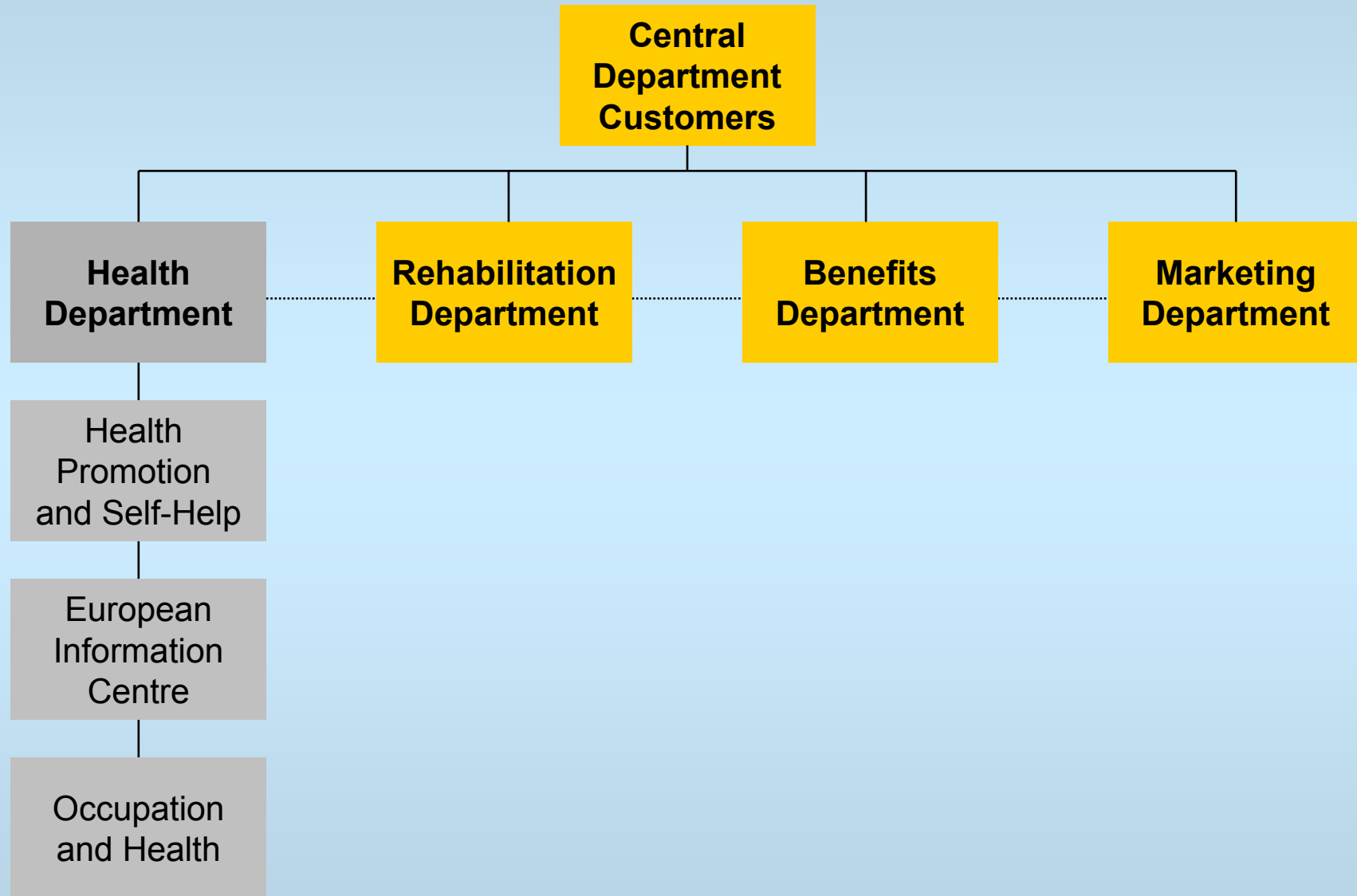
Third Biggest Health Insurer

- 13.2 mil. Insured Persons
- appr. 300 BKK's
- Headquarter in Essen/Germany
- active at Company - State - Federal Level

www.bkk.de



BKK Federal Association



Activities

- ➔ **Health Monitoring** (e.g. annual health reports since 1977)
- ➔ **Research** (e.g. methods, work-related diseases)
- ➔ **Health promotion activities** (e.g. health cycles, networks)

This report was produced by a contractor for Health & Consumer Protection Directorate General and represents the views of the contractor or author. These views have not been adopted or in any way approved by the Commission and do not necessarily represent the view of the Commission or the Directorate General for Health and Consumer Protection. The European Commission does not guarantee the accuracy of the data included in this study, nor does it accept responsibility for any use made thereof.