



WHO Regional Office for Europe

Vaccine-preventable diseases and Immunization, Communicable Diseases Surveillance and Response

Tool for assessment of pandemic preparedness

Michala Hegermann-Lindencrone
Communicable Disease Surveillance and Response
WHO Regional Office for Europe
mhl@euro.who.int

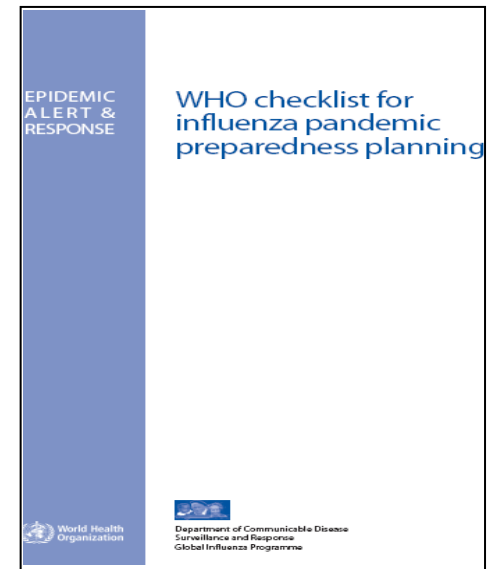
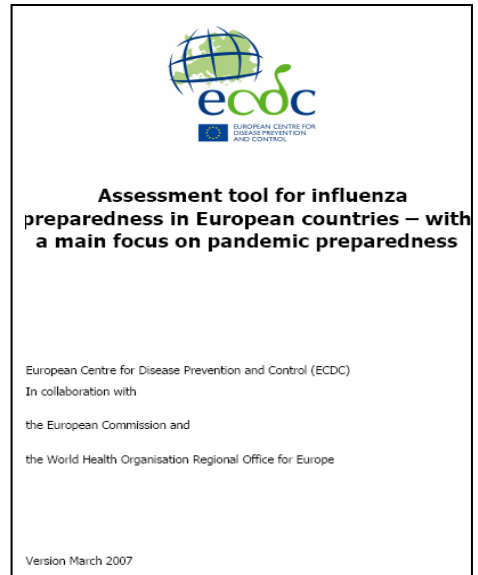
Pandemic Indicators Tool

- New tool for assessing pandemic preparedness
- EC project started May 2006: WHO led in collaboration with ECDC and experts from MS
- Need to monitor preparedness to keep improving and targeting areas most in need
- Methodology
 - Expert opinion, developed in expert group consisting of Marja Esveld (NL), Jane Leese (UK), Ralf Reinjtes (GER) Angus Nicoll, Howard Needham, Peter Kreidl (ECDC), Caroline Brown, Bernardus Ganter, Michala Hegermann (WHO)
 - Consultation with MS at 3rd joint WHO/EC/ECDC workshop on pandemic preparedness in Uppsala
 - Piloted in 3 MS in 2007
- Current status: tool developed, use partly defined but need for MS consultation for further defining use



Other available tools

- ECDC assessment tool
- WHO checklist and pandemic plan
- PAHO self-assessment tool
- UNSIC 75



Added value of new tool:

- Not only a checklist but a tool to measure progress in pandemic preparedness
- Greater level of detail
- Automatic guidance for MS on how to improve preparedness based on results



The indicators

- 20 key indicators with each 4-5 second tier indicators.
- Based on 20 key indicators from the ECDC assessment tool – slightly modified over the course of the project

1. Key indicator

1.1 Second tier indicator

1.2 Second tier indicator

1.3 Second tier indicator

1.4 Second tier indicator

1.5 Second tier indicator

2. Key indicator

2.1 Second tier indicator

2.2 Second tier indicator

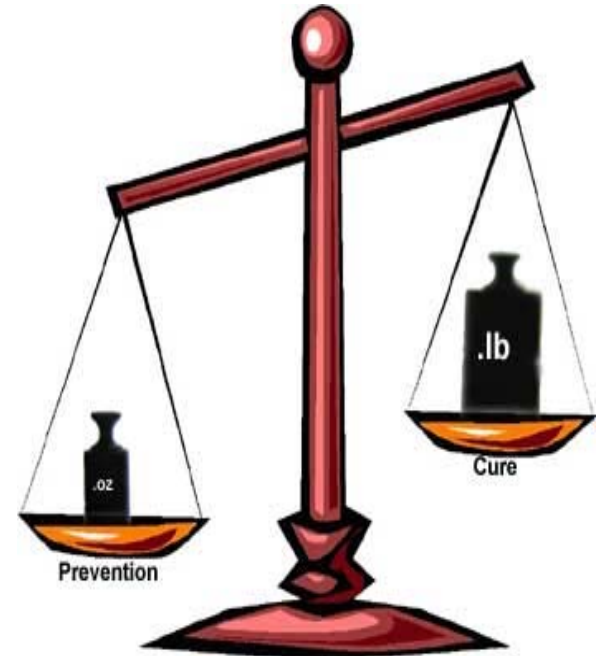
2.3 Second tier indicator

2.4 Second tier indicator



Weighting

- Second tier indicators and sub questions weighted
- Weighting based on:
 - Consensus on importance of each indicator in expert group
 - Degree of preparedness
- Purpose of weighting
 - To measure progress



Web based application

key indicator

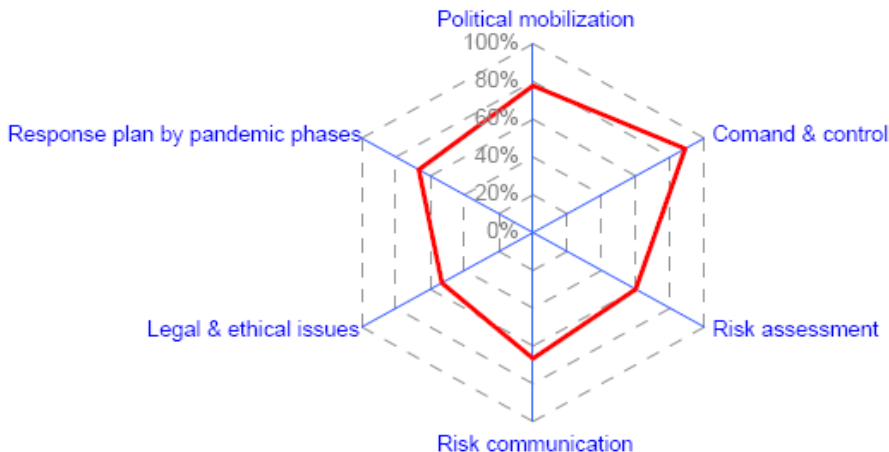
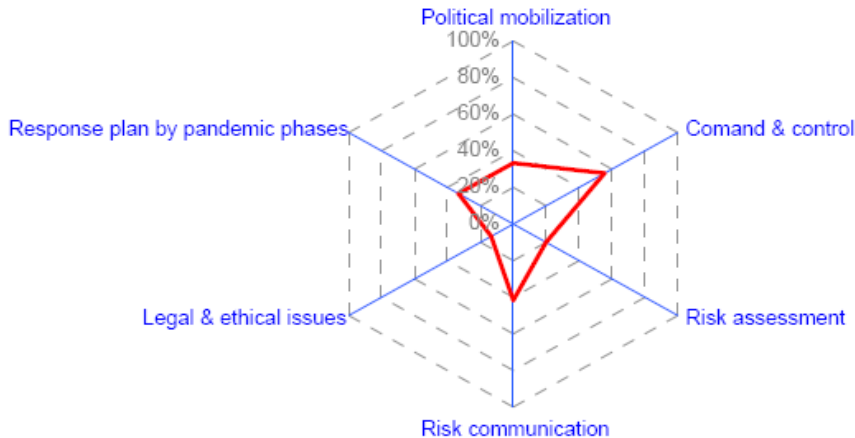
<u>Preparing For An Emergency: National Planning And Co-Ordination</u>			
	Goal	KEY INDICATOR	CURRENT STATUS
4	National framework in place for pandemic preparations across all sectors (for health also see Goal 6)	Written national (cross-sectoral) crisis management plan (influenza pandemic-specific, or generic but applicable to an influenza pandemic) publicly available	Total percentage (added scores in sub indicators)
<p>2nd tier indicator</p> <p>4.1 Is a <u>high level cross-sectoral planning committee</u>/structure in place, including a coordinating secretariat (25%)</p> <p>Sub questions</p> <p>Only one answer is possible ;</p> <ul style="list-style-type: none"> Not in place (0%) Yes, in place but not met yet (20%) <ul style="list-style-type: none"> Yes, in place, meetings held (80%) Yes, in place, meetings held, operational, detailed document of division of tasks in place (100%) <p>4.2 Have <u>essential services</u> been <u>identified</u> (sectors and functions for consideration, see table in 4.4 (20%)</p> <p>Only one answer is possible ;</p> <ul style="list-style-type: none"> No, not identified (0%) Yes, services identified and agreed on by high level planning committee (100%) <p>4.3 Are planning assumptions available? (25%)</p> <p>Only one answer is possible ;</p> <ul style="list-style-type: none"> No (0%) Yes, but only for the health care sector (70%) Yes, for all sectors (70%) 			



Results

➤ Results can be presented in visual graphs

- Easy interpretation of results for each key indicator
- Additionally, guidance on how to improve preparedness can be linked to the results



Use of Pandemic Indicators Tool

First and foremost

- A tool for self-assessment in MS - an *internal* tool
- A tool that allows monitoring of progress in pandemic preparedness within the MS over time
- Enables MS to identify areas where focus and improvement is needed
- Results can be used to inform policy makers and resource allocators where resources need to be placed



Further options for use of Pandemic Indicators Tool

Option 1

- Monitoring tool at MS level
- Share results with WHO/ECDC
 - To identify areas where WHO/ECDC can be of assistance
 - To prepare a joint strategic plan for development of pandemic preparedness with each MS
- Consultation with MS required to agree on this option



Further options for use of Pandemic Indicators Tool

Option 2

- Regional monitoring tool
- Selected key indicator results to be made publicly available. This could:
 - Empower MS in mobilization of resources
 - Enable WHO/ECDC and other international organizations to provide necessary support
 - Identify subregional weaknesses as well as strengths
- Need to agree on set of key indicators to be made publicly available
- Need broad consultation with MS to agree on this option



Options for consultation with MS to decide on use of tool

- Direct communication with MS
- Sharepoint/online discussion forum
- Use other regional/subregional meetings as opportunity to discuss
- Working group consisting of selected MS, ECDC and WHO



Future steps

- Different options will be considered in the coming months
- MS will be approached regarding consultation
- Other international organizations will be approached for coordination of means to assess pandemic preparedness
- This presentation was the first step in informing MS about the tool and its future use.
- Any comments or suggestions are welcomed



Thank you

mhl@euro.who.int



This paper was produced for a meeting organized by Health & Consumer Protection DG and represents the views of its author on the subject. These views have not been adopted or in any way approved by the Commission and should not be relied upon as a statement of the Commission's or Health & Consumer Protection DG's views. The European Commission does not guarantee the accuracy of the data included in this paper, nor does it accept responsibility for any use made thereof.