The background of the slide is a photograph of a large, multi-story brick building with many windows, partially obscured by lush green trees. In the foreground, there is a green lawn and a street with several parked cars. A large blue rectangular box with a fine grid pattern is overlaid on the top half of the image, containing the main title in yellow text.

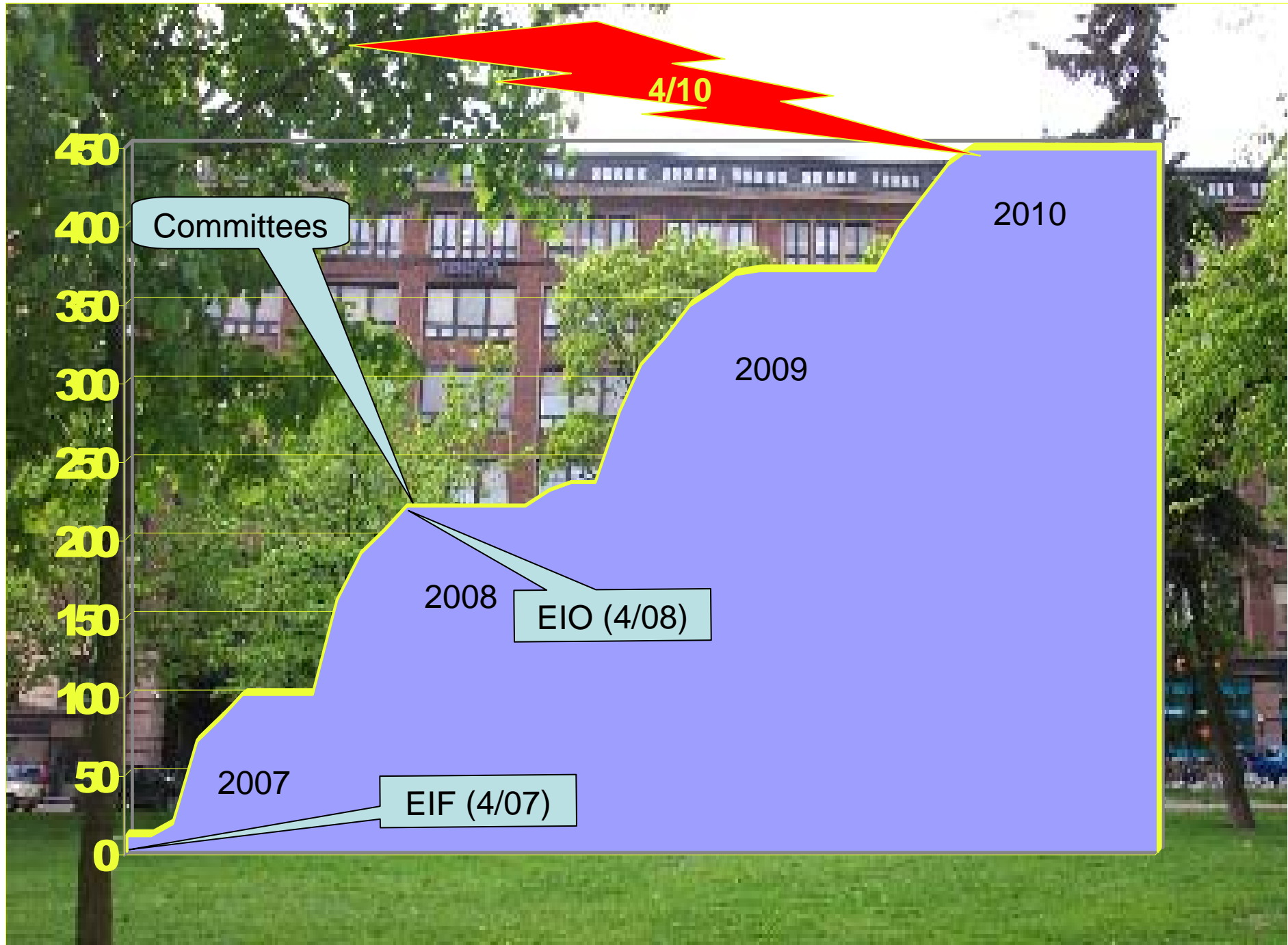
Future Chemical Agency: steps for its establishment, structure, tasks

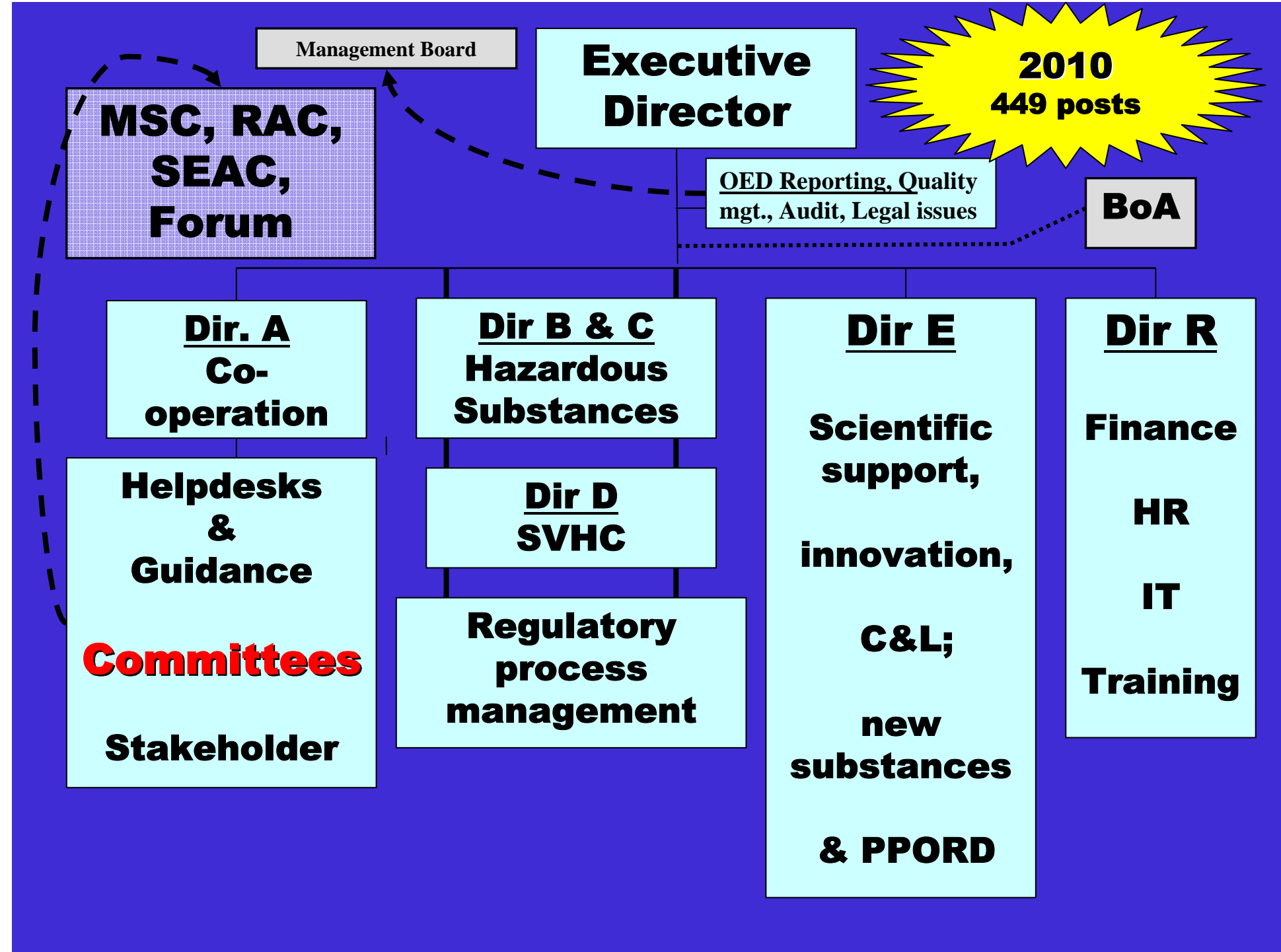
ECHA, Helsinki

Joachim Kreysa
Commission, REACH unit

Roadmap

- Dec 06 : 2nd reading in Council - adoption
- April 07 : REACH EIF**
- July 07 : 83 initial staff
- Nov 07 : ED takes office
- April 08 : ECHA operational, ± 220 staff**
- Oct. 08 : Pre-Registration deadline
- April 10 : 1st Registration deadline, ± 450 staff**





- **manage, and in some cases carry out the technical, scientific, & administrative aspects of REACH**

AGENCY

- **ensure consistency at Community level**

- **provide the best possible scientific/technical advice on chemicals which fall under REACH**

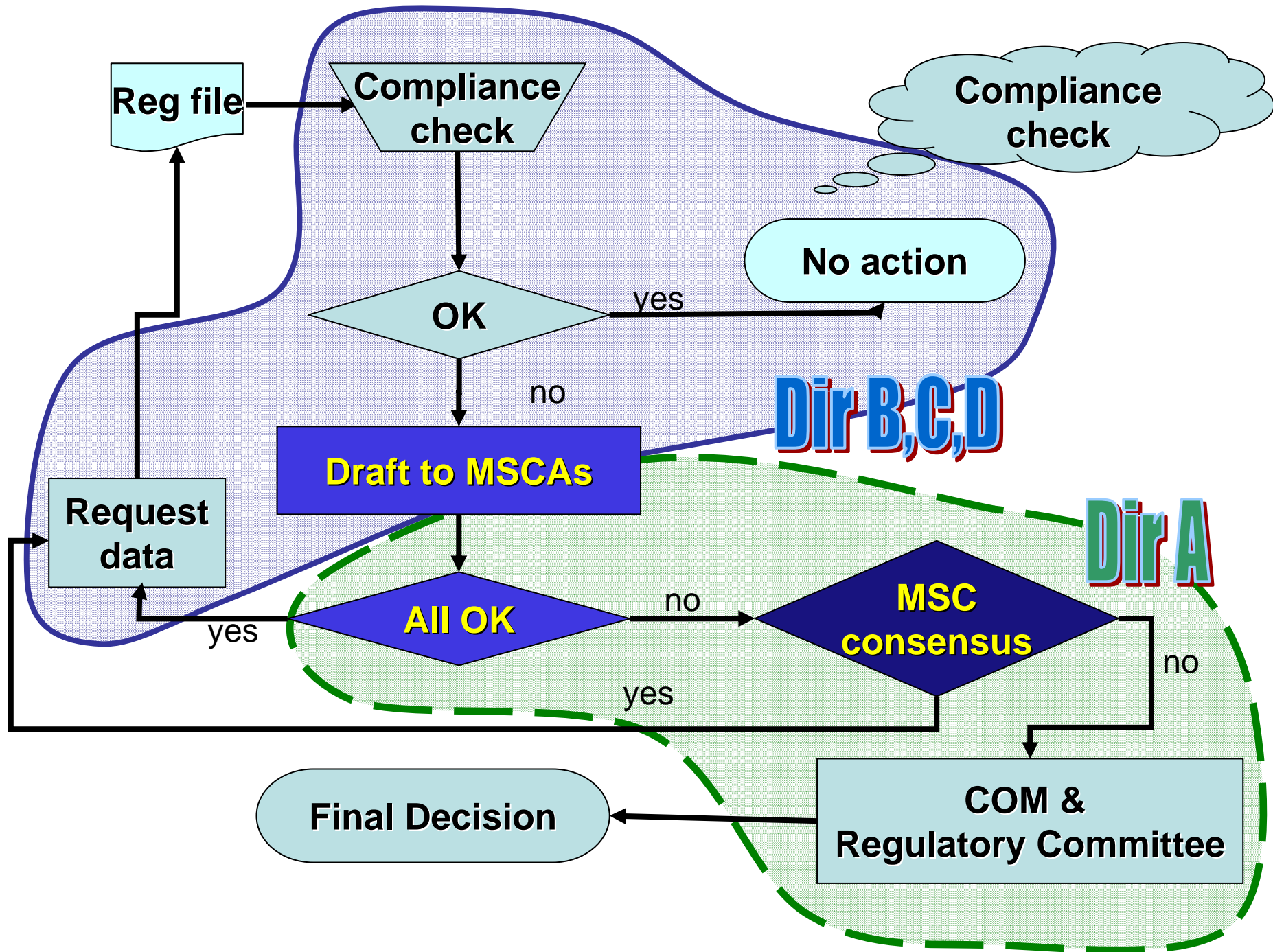
Role of committees

- **RAC – questions relating to risks to human health and the environment**
 - Evaluations, authorisation, restriction, C&L
- **SEAC – questions relating to the socio-economic impact of possible legislative actions**
 - Authorisation, restriction
- **MSC**
 - solve potential divergent opinions on evaluation;
 - assess proposals for SVHC for authorisation

Role of committees

Upon request by COM:

- **Provide technical & scientific support for improving cooperation on S&T issues relating to safety of substances**
- **Active participation in technical assistance & capacity building on sound management of chemicals in developing countries.**
- **Drawing-up opinions on any other aspects concerning the safety of substances**





ECHA

Joachim Kreysa
Commission, REACH unit

This paper was produced for a meeting organized by Health & Consumer Protection DG and represents the views of its author on the subject. These views have not been adopted or in any way approved by the Commission and should not be relied upon as a statement of the Commission's or Health & Consumer Protection DG's views. The European Commission does not guarantee the accuracy of the data included in this paper, nor does it accept responsibility for any use made thereof.