



Gemeente
Amsterdam

Monitoring migrant integration in Amsterdam

Joeke Kuyvenhoven, OIS
22-11-2017





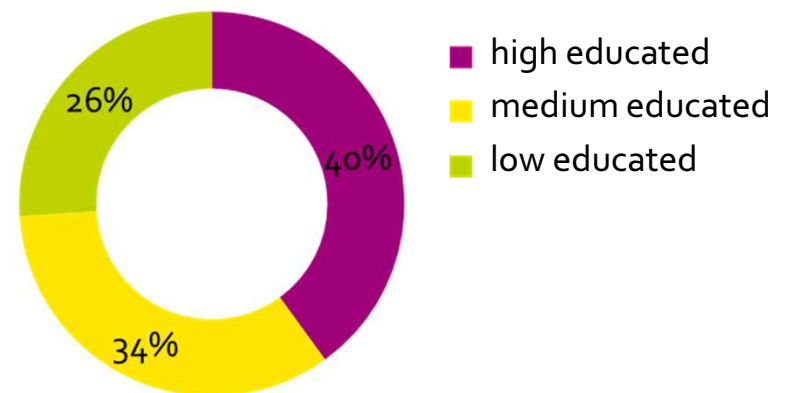
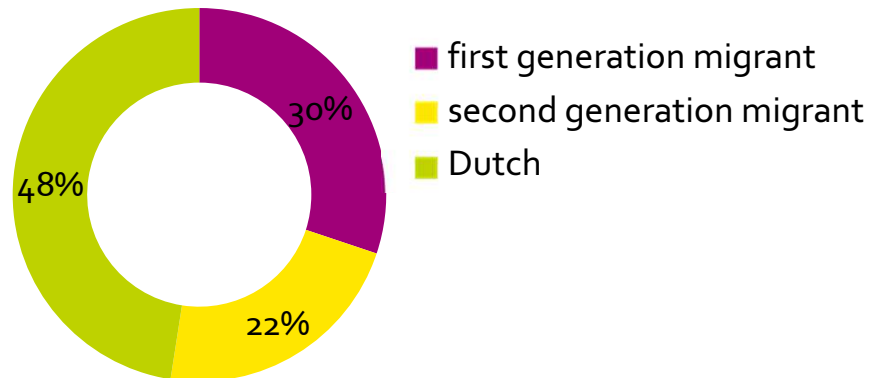
Profile Amsterdam

■ 844.952 inhabitants (01-01-2017)

■ Unemployment rate: 8% (2015)

■ Population by background

■ Population (aged 15-74) by level of education (2014)





Policy on diversity

- All citizens of Amsterdam should have equal opportunities to be able to fully participate in society
- Diversity monitor
 - Compare different groups of citizens in Amsterdam on:
 - 30 indicators on participation and conditions for participation



Diversity monitor

- Diversity by:

- Gender
- Age
- Educational level
- Immigrant background
- Residential neighbourhood

- 30 indicators on:

- *Equality of opportunity:*
health, social networks, societal inclusion
- *Conditions for participation:*
socio-economic position,
societal/political participation
- *Living conditions*

http://www.ois.amsterdam.nl/visualisatie/dashboard_diversiteit.html



Policy on refugees

- “Amsterdamse Aanpak Statushouders”:
- Facilitate and accelerate integration and participation
- Integral approach of employment, education, care and welfare

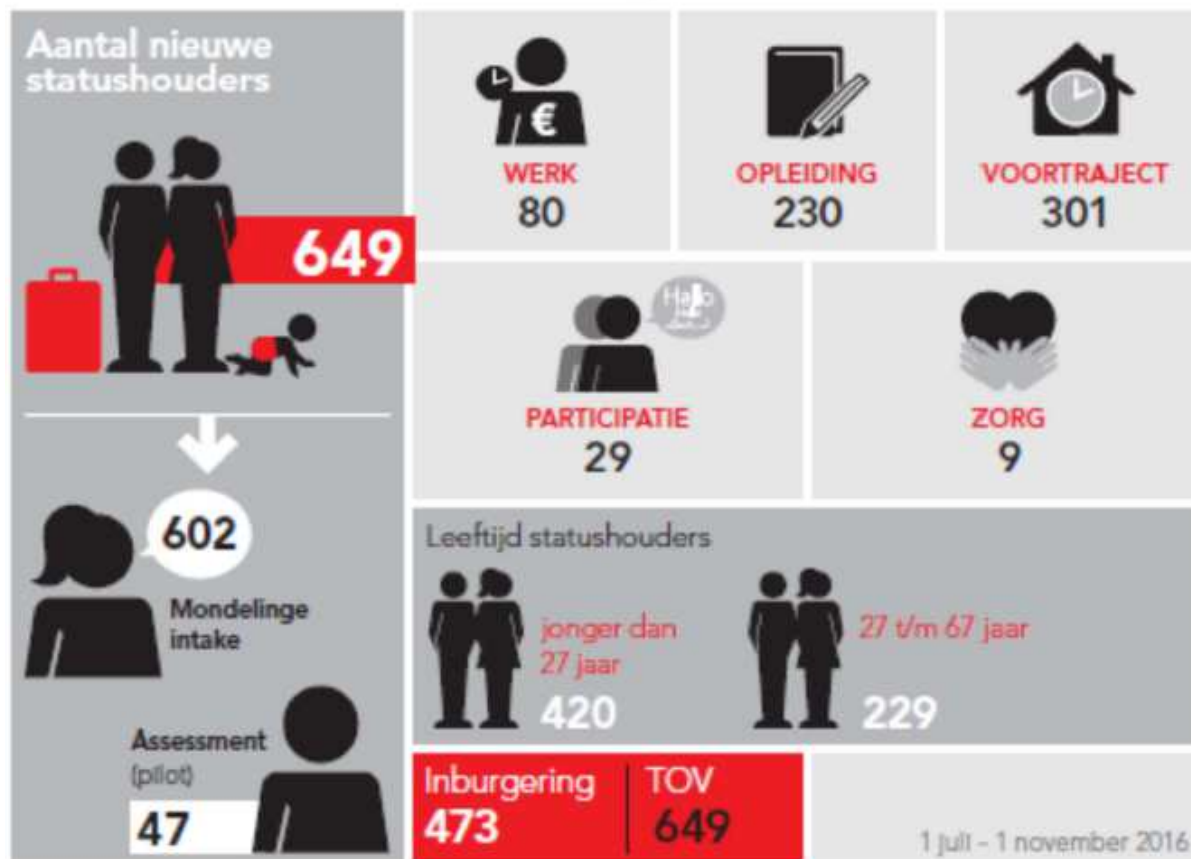


Monitor on refugees

- Monitoring started in 2016: report every 6 months
- Data on work, income, education, housing, resourcefulness , attitudes and participation
- Comparison with previously settled refugees
- Aim is to monitor the local policy towards refugees



Resultaten Amsterdamse Aanpak Statushouders





Data used for monitoring

- Local survey data
- Registration data
 - Local registration data
 - National registration data (through CBS)
- Marginal use of Eurostat en OECD data, only in combination with local data



Gemeente
Amsterdam

