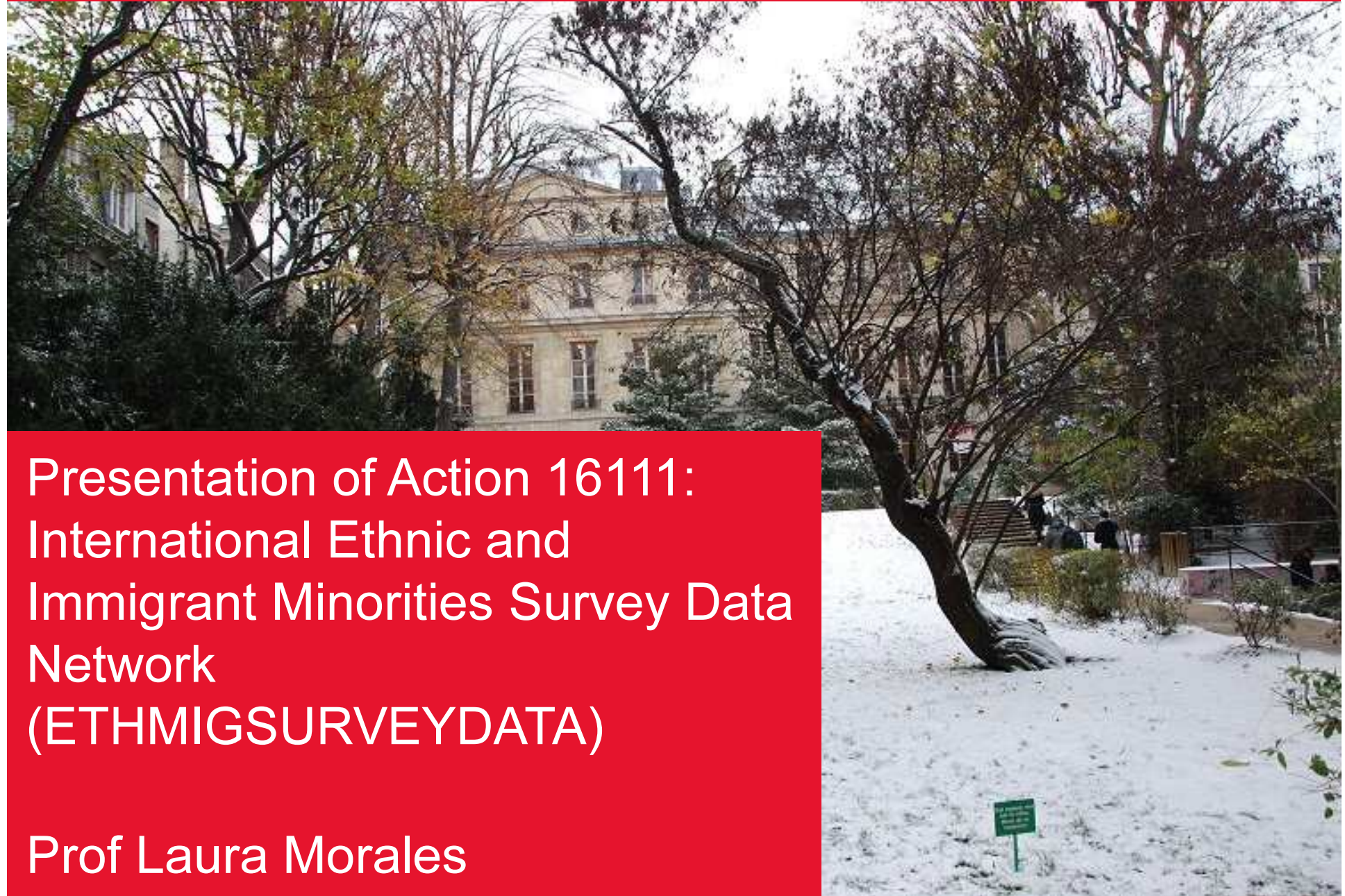


Presentation of Action 16111:  
International Ethnic and  
Immigrant Minorities Survey Data  
Network  
(ETHMIGSURVEYDATA)

Prof Laura Morales



# What is COST?

- COST is an **intergovernmental, pan-European Framework** (36 Member Countries and one Cooperating State)
- **COST mission: enabling Scientific and Technological developments** through trans-European **networking of national research investments**
- **Framework Partnership Agreement (FPA)**: strategic agreement with the European Commission for Horizon 2020 and Specific Grant Agreements for its implementation
- **EUR 298 million budget** for 7 years drawn from two Horizon 2020 work programmes:
  - Challenge 6 “Europe in a changing world - inclusive, innovative and reflective Societies”
  - “Spreading Excellence and Widening Participation”

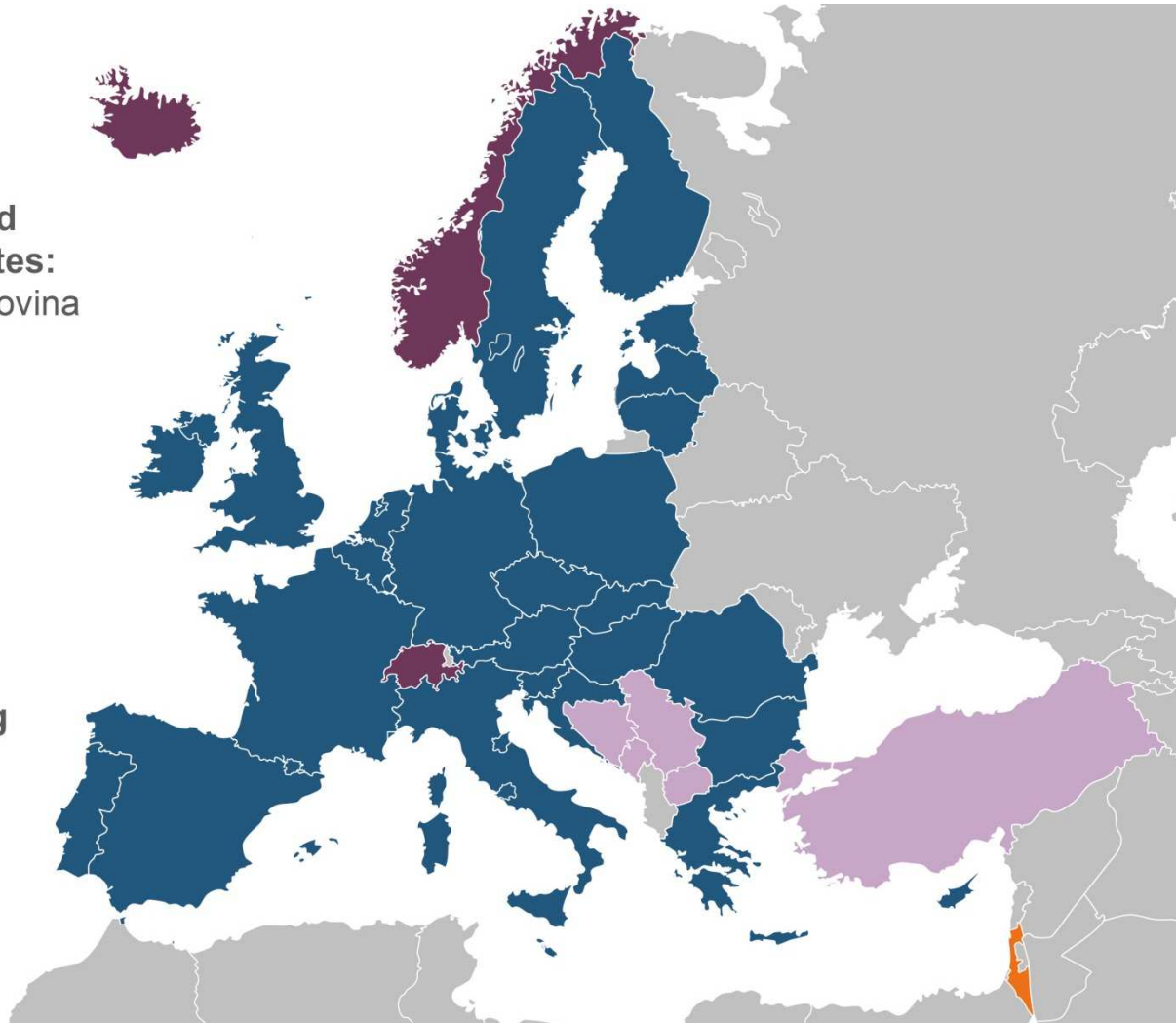
# What is COST?

COST supports the networking of researchers through science and technology networks called '**COST Actions**' open to:

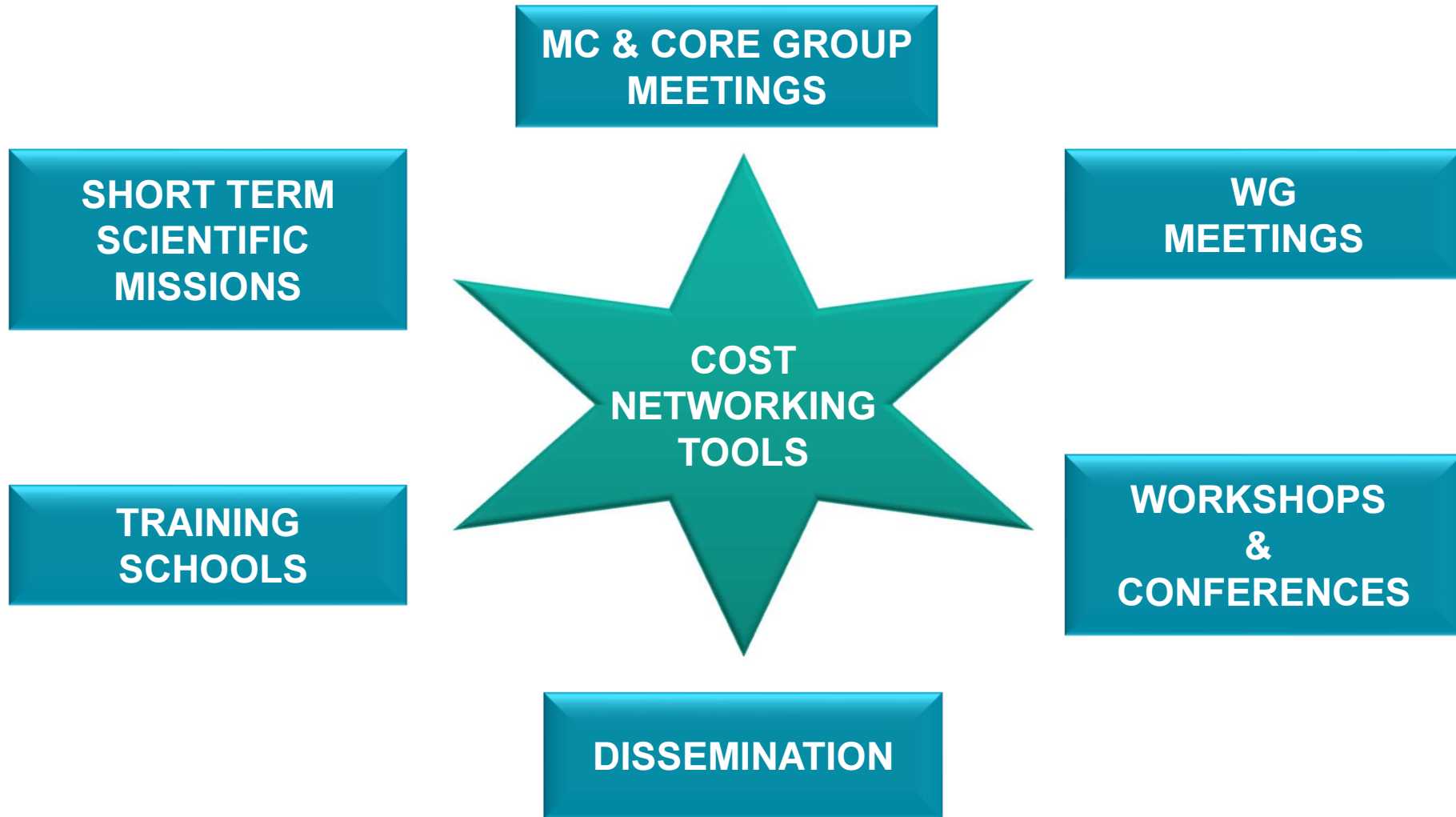
- Any novel and original idea (innovative)
- All fields of S&T (including interdisciplinary, new and emergent fields) – **bottom-up**
- Flexible participation - join at any time
- All partners (academia, public organisations, SME, industry, NGO, International Organisations)
- All career stages (young and senior researchers)
  - Capacity building
- All countries (COST Countries, NNC, IPC)
  - Global cooperation on the basis of mutual interest

# COST Countries

- EU 28
- EU Candidates and Potential Candidates:  
Bosnia and Herzegovina  
fYR Macedonia  
Montenegro  
Republic of Serbia  
Turkey
- Other Countries:  
Iceland  
Norway  
Switzerland
- COST Cooperating State: Israel



# COST Networking Tools



# Composition of ETHMIGSURVEYDATA

- Currently, 34 countries have signed MoU + colleagues from US, AUS, NZ & CAN to join as Observers
- 100+ individuals are listed as main or substitute members of the Management Committee
- A very diverse group of participants from many disciplines (e.g. law, psychology, demography, health studies)
- Several EU agencies are already Observers: FRA, EASO, Eurofund
- New EU agencies/organisations to join soon: JRC + Eurostat?
- Will reach out to other gov't institutions (e.g. national statistics offices)
- Some cities also members (e.g. Amsterdam), very interested in attracting more local gov't units
- Diversity is great asset to the network, reaching out to non-academic communities essential

# Objectives of ETHMIGSURVEYDATA

- **(1)** Produce a comprehensive compilation of the data that is available on EMMs across Europe and beyond;
- **(2)** Articulate the mechanisms to archive and share the data and make them available to a wider public, both academic and non-academic, on open data platforms;
- **(3)** Bring together the expertise that will allow survey data already collected to be subject to a post-harmonization process in order to facilitate comparative analyses of data that currently stand alone;
- **(4)** Coordinate efforts to obtain additional research funding to extend data sharing and to identify blank spots to be investigated further;

- **(5)** Promote further comparative analysis and the dissemination of research results on EMMs' integration;
- **(6)** Create the research capacity to promote similar survey data production in the European countries where they still do not exist;
- **(7)** Train the future generations of European researchers in best practices for data production, sharing and analysis in this area of research; and
- **(8)** Provide a platform for the coordination of future data collection in this field to maximize comparability
- Thus, goals focus on study of EMMs' economic, social and political integration with survey data, and on the production, compilation, sharing and pooling of such data



# Linking Objectives to Workgroups

## WG 1 National Surveys Group

- Compiling data (Objective 1)
- Sharing data (Objective 2)
- Post-harmonizing data (Objective 3)

## WG 2 Local Surveys Group

- Compiling data (Objective 1)
- Sharing data (Objective 2)
- Post-harmonizing data (Objective 3)

## WG 3 Indicators Group

- Coordination of future data collection (Objective 8)
- Promote survey data collection in more countries (Objective 6)

## WG 4 Educational Group

- Promoting comparative analysis (Objective 5)
- Train future generations in best practices (Objective 7)

## WG 5 Communication Group

- Coordinating additional research funding capture (Objective 4)
- Disseminating comparative analyses (Objective 5)

# Tasks to undertake with the Action

<i>Task #</i>	<i>Description</i>	<i>WGs involved</i>	<i>Outputs expected</i>
1	Review of relevant material, datasets and literature	1, 2 and 3	Inventory, reports and guidelines
2	Location and retrieval of National and Local data	1 and 2	Non-harmonized data inventory
3	Definition of guidelines for surveying EMMs' integration	3	Guidelines and 'core' questionnaires for future research
4	Harmonization of National and Local data	1 and 2	Harmonized databases, technical reports on data, codebooks
5	Integration of findings to produce coherent knowledge	All	Action workshops and working papers
6	Identification of best practices and recommendations	1, 2, 3 and 5	Working papers, reports and policy recommendations
7	Development of a research agenda for the future	1, 2, 3 and 5	Action workshops and working papers
8	Distribution and promotion of the data	All	Conferences, workshops, publications, policy recommendations, schools

# Key outputs and deliverables

- An EMM Survey Data Hub: with compilation/identification of survey data across Europe and data in open access when shared by producers
- Integrated datasets: through post-harmonization of existing surveys, also to be made available through Data Hub
- Publications and dissemination: both academic and policy-oriented
- High quality research skills: through the training of new cohorts of researchers

# Plan for Activities

- Leicester meeting in July to outline strategy and plan to deliver on goals for year 1 (and allow us to deliver those for future years as we move along)
- Between July and December, WG leadership teams to meet on Skype or similar and exchange emails with initial proposals on implementation plans + STSM call
- Meeting in December (18-20 in Madrid): plenary of all WGs with all members + MC meeting to decide on structure for draft of reports and adjust detailed strategy and work plan if needed
- Between December and February, WG leadership teams to implement plans (e.g. circulate data collection templates, produce drafts of reports, start setting set up website, etc.)
- Workshop + Winter training school in February (probably in Porto): discuss/prepare funding applications + disseminate existing data to stakeholders + training school

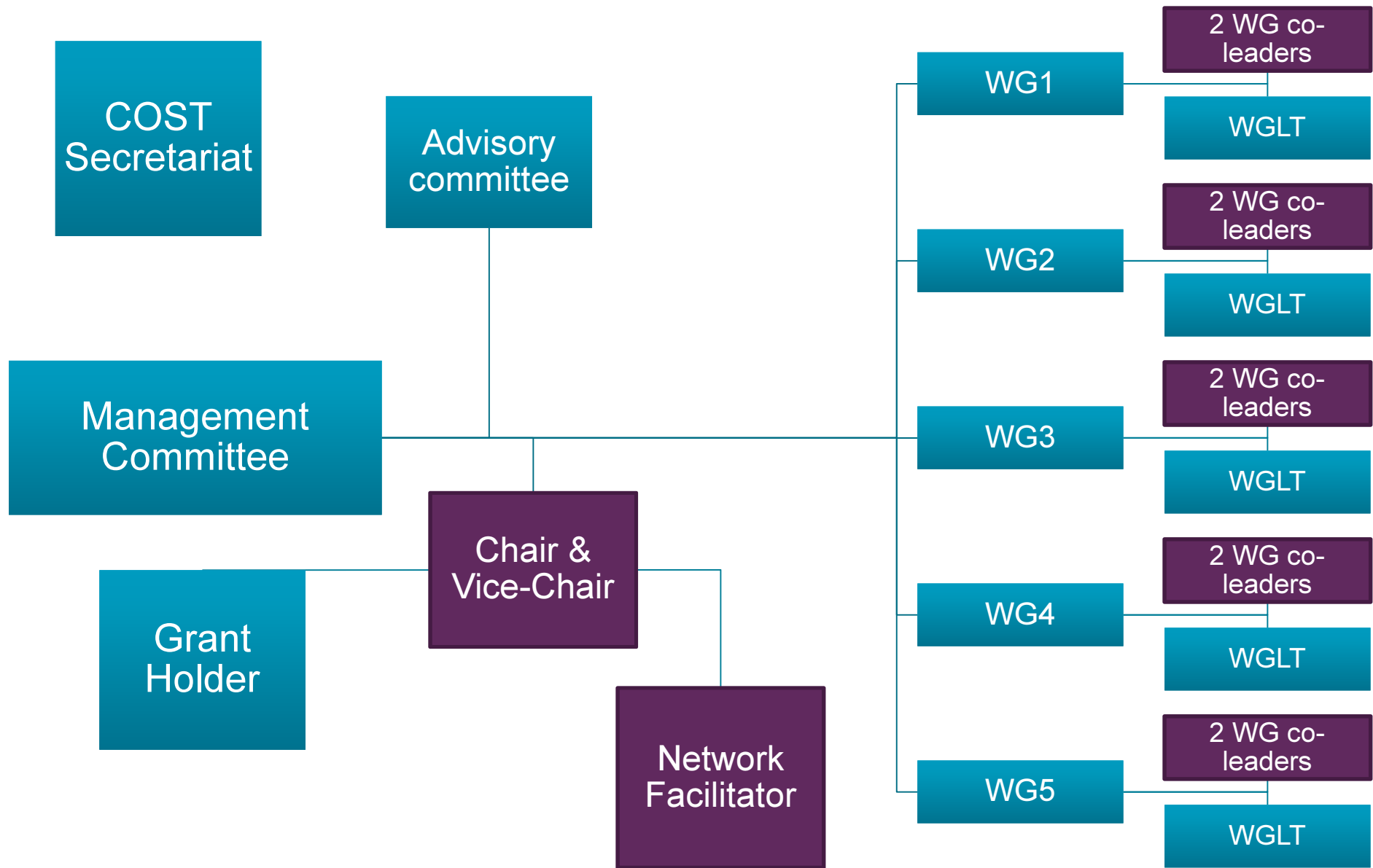
# Who can join ETHMIGSURVEYDATA?

- The Action is formally joined by countries (see the Action website for the full list).
- Until now 34 countries have joined the network but more countries can join by signing the Memorandum of Understanding.
- Nevertheless, individuals/organisations can also join and form part of the network and participate in the activities of ETHMIGSURVEYDATA.
- If you are a researcher — academic or non-academic — undertaking research with survey data on EMMs you can join the network and contribute to it.

# How can you join the Action and Network

- Individuals can join as members (main or substitute) of the Management Committee of the Action if there are positions left for the country where they are based; or they can join directly one of the five work groups that structure the Network:
  - Work Group 1: Task Force on National-level data
  - Work Group 2: Task Force on Local-level data
  - Work Group 3: Setting the guidelines for measuring EMMs' integration
  - Work Group 4: Training young scholars
  - Work Group 5: Interaction with stakeholders and dissemination
- If you are interested in joining ETHMIGSURVEYDATA, you can send an email to [laura.morales@sciencespo.fr](mailto:laura.morales@sciencespo.fr)
- More information on:  
<http://www2.le.ac.uk/departments/politics/research/ethmigsurveydata>
- Follow us on Twitter: [@EthMigSurveyDat](https://twitter.com/EthMigSurveyDat)

# Action Governance



# Implementation of COST policies

- Excellence: transversal in all scientific goals, tasks and deliverables
- Inclusiveness: Geographical coverage, Gender balance, integration of ECIs
  - Very good starting point in composition of network
  - Embedded in proposal of Constitution/Internal Rules of operation for Action
  - Embedded in selection process of WG co-leaders and WGLTs
  - Steering Committee and Management Committee will oversee implementation and make recommendations when needed
- Incorporation of SMEs & Industry: WG5 specifically tasked with reaching out to a variety of non-academic organizations
- International cooperation: several IPCs interested in joining Action as MC Observers (USA, CAN, NZ, AUS), full participation will be sought through additional external funding



- Thank you for listening!
- Questions?
- Want to join?
- Suggestions?